

# members. magazine

NOV-DEC 2010

---

FLINT INSTITUTE OF ARTS



from the director	2
exhibitions	3–5
video gallery	6
acquisitions	7–8
featured acquisition	9
art on loan	10
films	11–12
calendar	13
news & programs	14–17
art school	18
education	19–22
art sales & rental gallery	23
founders travel	23
membership	24–26
contributions	27–28
museum shop	29

# contents

## Board of Trustees

Elizabeth S. Murphy	<i>President</i>
Mark L. Lippincott	<i>First Vice-President</i>
Katharine W. Eiferle	<i>Second Vice-President</i>
Samuel M. Harris	<i>Secretary</i>
F. James Cummins	<i>Treasurer</i>
Louis A. Hawkins	<i>Immediate Past-President</i>
Susan Steiner Bolhouse	
James D. Draper	
Shannon Easter White	
Chris Flores	
Arminda Garcia	
Ayman Haidar	
Armando Hernandez	
Lynne Hurand	
Pete Hutchison	
Chris Kelly, Jr.	
Christopher S. Kelly, Sr.	
Marilyn Kopp	
Linda LeMieux	
Diane Lindholm	
Robert S. Piper	
Marcus Randolph	
Michael Rucks	
Ira A. Rutherford	
Clinton A. Sampson	
Grayce Scholt	
Phyllis Sykes	
David T. Taylor	
Jan Werschky	
Claire M. White	
Karen Williams Weaver	

## Honorary Trustee

Elizabeth Neithercut

## Administration

John B. Henry, III	<i>Director</i>
Michael A. Melenbrink	<i>Assistant Director of Finance &amp; Administration</i>
Kathryn K. Sharbaugh	<i>Assistant Director of Development</i>
Michael D. Martin	<i>Coordinator of Collections &amp; Exhibitions</i>
Monique M. Desormeau	<i>Curator of Education</i>
Amy Black	<i>Acting Assistant Director of the Art School</i>

Since inception, the development, care and presentation of the permanent collection has been central to the FIA's mission. Now, eighty years later, the curatorial staff is busier than ever working with collectors, creating and updating records, adding images and information to the website, curating collection exhibitions, and conducting research on collection objects.

In the last five years, the FIA has acquired nearly 1,500 works including several significant collections. New acquisitions are reported in each issue of your member's magazine (see pages 7–8). From Neolithic Chinese vessels to contemporary glass works by Dale Chihuly, many of the new works rival the FIA's most important pieces. The behind the scenes work involved in processing, storing and preparing these objects for gallery presentation is a tremendous undertaking and often goes unnoticed. Obtaining funding for essential collection management and expertise can be challenging, as well, because the low profile of the curatorial work lacks the notoriety of many other museum endeavors.

Fortunately, there is good news to report. The FIA has received support from foundations as well as several local patrons for this important work.



Research and documentation of the European collection has been funded through a grant from the National Endowment for the Arts. The Henry Luce Foundation is funding photography and research of the American collection and improvements to collection storage, and the C. S. Mott Foundation has funded personnel expenses. The Kress Foundation funded digital photography of the Bray Renaissance and Baroque collection. Which has led to new research by well-known scholars who have uncovered compelling information that will be published next November, commemorating the 50th anniversary of the Bray collection of tapestries and decorative arts.

With more than 8,000 objects, museum visitors see only a fraction of the collection (about 5% is on view). Many new works as well as works that have long been in storage have been installed recently so be sure to make the collection galleries a destination during your next visit... oh, and be sure to bring a friend.

**John B. Henry, III**  
*Director*

Cover Image From the exhibition *3-D: Focus on the Figure*

Attributed to Giovanni Buora  
Italian, ca. 1450–1513  
*Angel Holding Candlestick* - one of a pair (detail)  
sandstone, late 15th / early 16th century  
39 x 14 x 10 inches  
Gift of Viola E. Bray, 2005.146.1

# Unbroken Ties

## Dialogues in Cuban Art

through 12.7.10

Hodge & Temporary Exhibition Galleries

Sponsored by  
**Community Foundation  
of Greater Flint through  
grants advised by:  
Mary Ann Tremaine  
Endowment Fund  
Peter D. and Nancy P.  
Kleinpell Family Fund**



The exhibition *Unbroken Ties: Dialogues in Cuban Art*, organized by the Museum of Art | Fort Lauderdale, Nova Southeastern University, is culled from their collection of contemporary Cuban art assembled by curator Jorge Santis. The exhibition reveals the existence of an acutely Cuban point of view, based on shared concerns and is illustrated by a series of comparisons and contrasts between individual works of art stressing their direct or indirect thematic linkage. The selected works represent three distinct groups of Cuban-born artists: men and women who were born on the island but developed professionally abroad, artists who reached artistic maturity and later immigrated to the United States, and a younger group of artists who not only studied in their homeland but still reside there. The visual dialogues are established in 56 works of art by 41 different artists. *Unbroken Ties* is

a multimedia exhibition consisting of paintings, sculptures, photographs, graphic works, videos and installations. The exhibition is comprised of both renowned artists and emerging artists including Jose Bedia, Abelardo Morrell, María Magdalena Campos-Pons, Tony Mendoza, Tomás Sánchez, Raúl Cordero, Kattia García Fayat and Miguel Florido.

Structurally, the exhibition is divided into three sections, each concerning a different aspect of Cuban culture. The first consists of works that pertain to Cuba before and after Castro and the fight for survival. The second, the treacherous journey to the United States and the risks Cuban immigrants take to get a “fresh start.” The last group examines what happens once the immigrants reach the United States and the new set of challenges and frustrations that await them there.

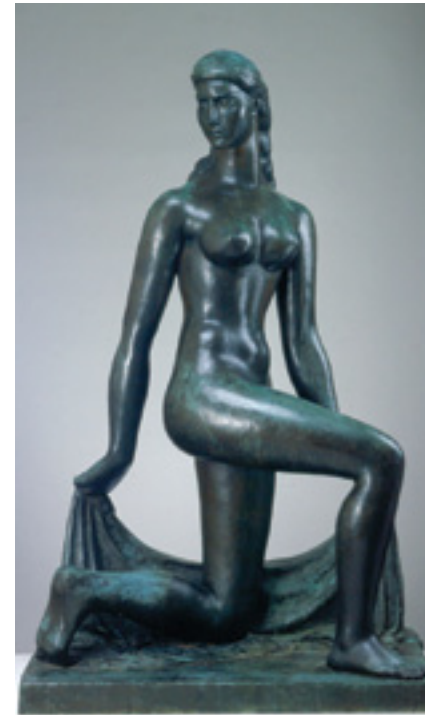
Eduardo Muñoz Ordoqui  
Cuba, b. 1964  
*Untitled (Banishment Series)*,  
ilfochrome print, 1996  
25.5 x 37.75 inches  
Organized by the Museum of  
Art | Fort Lauderdale, Nova  
Southeastern University

# 3-D: Focus on the Figure

12.18.10 – 1.30.11

Hodge & Temporary Exhibition Galleries

Giovanni della Robbia  
Italian, 1469–1529  
*Figure of an Angel*  
tin-glazed earthenware, n.d.  
26 x 9 x 9 inches  
Gift of Viola E. Bray, 2005.153



William Zorach  
American, b. Lithuania,  
1887–1966  
*Spirit of the Dance*  
bronze, 1932  
76 x 31 x 48 inches  
Gift of Mr. and Mrs. Charles  
Stewart Mott, 1965.10

The human form has provided sculptors with inspiration for thousands of years. The very first sculptures created were stylized representations of the human form. In Western Art, the human form has evolved over several centuries from predominantly religious and mythological subject matter to works that come close to abstraction. Traditionally artists work in materials like metal, stone or clay; however, contemporary works incorporate a great variety of materials like silicone, textiles and even hair!

This exhibition celebrates the rich history of depicting the human form in three dimensions with more than forty sculptures spanning over five centuries, and includes Renaissance and Baroque works by Giovanni della Robbia and Gerolamo Campagna, Antonio Canova to Modernist and contemporary works by Auguste Rodin, Pablo Picasso and Duane Hanson.

## Richard Florsheim

through 11.28.10

Ford Graphics Gallery

Richard Florsheim's graphic works experiment with refracted light in landscapes, industrial scenes and illuminated cityscapes often depicting light projecting out into the sky or along a shoreline. Among his best known images are views of the Chicago skyline at night and the bright yellow and orange flames from steel mills seen against dark backgrounds. His works from his summer stays in Provincetown also reveal his fascination with the refraction and distortion of light.



Richard A. Florsheim  
American, 1916–1979  
*Combat*  
lithograph on paper, 1969  
26.25 x 19.6875 inches  
Gift of the Richard A. Florsheim Art Fund, 2004.12

## Picasso

12.4.10 – 2.27.11

Ford Graphics Gallery

Throughout his career, Pablo Picasso (1881–1973) was a master of several different media. He created over 2,500 prints and countless drawings. Picasso was thoroughly involved in every step of the printmaking process and used a range of printmaking techniques including drypoint, etching, aquatint, lithography, and linocut. This exhibition presents highlights from the 20th century master's body of graphic works and includes over 40 examples spanning his long career as an artist.



Pablo Picasso  
Spanish, 1881–1973  
*Tête de Femme*  
etching on paper, 1939  
17.625 x 13.375 inches  
Courtesy John Szoke Editions

## fleckenstein video gallery

### José's Reunion

(U.S., 2001) By Lisandro Pérez-Réy,  
5 minutes

José left behind his 11 month old daughter when he departed from Cuba in 1962, never dreaming that nearly four decades would elapse before he saw her again. This film documents his reunion with her in 2001. José is reunited with his daughter and also meets his 21 year old grandchild for the first time. The bittersweet



scenes in the Miami Airport capture the sorrow, anxiety, and indescribable joy of José, his daughter, and his grandchild.

NOVEMBER

### The Couple in the Cage: Guatianai Odyssey

(U.S., 1993) By Coco Fusco,  
31 minutes

In a series of 1992 performances, Coco Fusco and Guillermo Gómez-Peña decked themselves out in primitive costumes and appeared before the public as “undiscovered AmerIndians” locked in a golden cage—an exercise in faux anthropology based on racist images of natives. Presented eight times in four different countries, these simple performances evoked various responses, the most startling being the huge numbers of people who didn't find the idea of “natives” locked in a cage

objectionable. This provocative tape suggests that the “primitive” is nothing more than a construction of the West and uses comic fiction to address historical truths and tragedies.



DECEMBER

# acquisitions

## Artist Unknown

Chinese, Neolithic Period,  
6,500–1,700 BC  
A collection of 92 vessels  
Gift of Dr. Gerald J. Shepps,  
2010.52–2010.143

## Artist Unknown

Chinese, Neolithic Period,  
6,500–1,700 BC  
A collection of 4 vessels  
Museum purchase, 2010.144–  
2010.147

## George Sugarman

American, 1912–1999  
A collection of 30 works on  
paper  
Gift of the George Sugarman  
Foundation, 2010.148–  
2010.177

## George Sugarman

American, 1912–1999  
**Hanging Men**  
acrylic on aluminum, 1990  
50 x 68 x 40 inches  
Gift of the George Sugarman  
Foundation, 2010.178

## Georges Rouault

French, 1871–1958  
**Cirque de L'Etoile Filante**  
intaglio on paper, n.d.  
12 x 8 inches  
Gift of Ruth and Cyril Leder,  
2010.179

## Antonio Tempesta

Italian, 1555–1630  
**Apri dente Adonis Interimitur**  
etching on paper, n.d.  
4 x 5 inches  
Gift of Ruth and Cyril Leder,  
2010.180

## Marc Chagall

French, b. Russia, 1887–1985  
**Scene from Arabian Nights**  
lithograph on paper, n.d.  
14 x 10 inches  
Gift of Ruth and Cyril Leder,  
2010.181

## Marc Chagall

French, b. Russia, 1887–1985  
**One of Windows**  
lithograph on paper, n.d.  
9 x 15 inches  
Gift of Ruth and Cyril Leder,  
2010.182

## George Cruikshank

English, 1792–1878  
**Vicar Preaching to the Prisoners**  
etching on paper, 1830  
6 x 4.5 inches  
Gift of Ruth and Cyril Leder,  
2010.183

## Thomas Hart Berton

American, 1889–1975  
**Sorghum Hill**  
lithograph on paper, n.d.  
9.5 x 11 inches  
Gift of Ruth and Cyril Leder,  
2010.184

## Churchill Ettinger

American, 1903–1985  
**November Morning**  
drypoint on paper, n.d.  
8.5 x 12 inches  
Gift of Ruth and Cyril Leder,  
2010.185

## Ichiryusai Hiroshige

Japanese, 1797–1858  
**Kurota Bay**  
woodblock on paper, 1858  
15 x 10 inches  
Gift of Ruth and Cyril Leder,  
2010.186

## Ichiryusai Hiroshige

Japanese, 1797–1858  
**Ferry at the Koami - cho**  
woodblock on paper, 1857  
14 x 9 inches  
Gift of Ruth and Cyril Leder,  
2010.187

## Michel Wolgemuth

and Wilhelm  
**Pleydenwurff**  
German, 1434–1519,  
1460–1494  
**Weltchronik**  
woodcut on paper, n.d.  
15 x 10 inches  
Gift of Ruth and Cyril Leder,  
2010.188

## Joan Miró

Spanish, 1893–1983  
**Femme en Colere**  
etching on paper, n.d.  
4.5 x 5.5 inches  
Gift of Ruth and Cyril Leder,  
2010.189

## Joan Miró

Spanish, 1893–1983  
**Composition**  
lithograph on paper, n.d.  
6.5 x 5.5 inches  
Gift of Ruth and Cyril Leder,  
2010.190

## Adolph Dehn

American, 1895–1968  
**Pelicans**  
lithograph on paper, n.d.  
9 x 13 inches  
Gift of Ruth and Cyril Leder,  
2010.191

## Gabor Peterdi

American, b. Hungary,  
1915–2001  
**Earth & Water**  
intaglio on paper, n.d.  
9 x 4 inches  
Gift of Ruth and Cyril Leder,  
2010.192

## Jules Andre Smith

American, 1880–1959  
**A Day in June**  
etching on paper, n.d.  
8 x 10 inches  
Gift of Ruth and Cyril Leder,  
2010.193

## Pierre Auguste Renoir

French, 1841–1919  
**Le Chapeau Epinglé (The Pinned Hat)**  
etching on paper, ca. 1898  
4.5 x 3.5 inches  
Gift of Ruth and Cyril Leder,  
2010.194

## Antoni Clave

Spanish, 1913–2005  
**Illustration from Carmen**  
lithograph on paper, 1966  
7.5 x 5 inches  
Gift of Ruth and Cyril Leder,  
2010.195

## J. Secley

**Tugboat**  
woodcut on paper, n.d.  
6.5 x 8 inches  
Gift of Ruth and Cyril Leder,  
2010.196

## George Bickham

English, 1684–1758  
**Music Page, Advice to Celia**  
etching on paper, n.d.  
15 x 10 inches  
Gift of Ruth and Cyril Leder,  
2010.197

## Artist Unknown

Panamanian  
Mola  
fabric, n.d.  
14 x 18 inches  
Gift of Ruth and Cyril Leder,  
2010.198

## Frederic M. Grant

American, 1886–1959  
**Untitled (Street Scene, San Marco Cathedral)**  
oil on canvas, n.d.  
21.5 x 21.5 inches  
Gift of James Brodfuehrer,  
2010.199

## Various Artists

**Derriere le Miroir - Cinq Livres Gravés**  
lithographs on paper, 1974  
15 x 12 inches  
Gift of Edith Gutow, 2010.200–  
2010.207

## Artist Unknown

Egyptian  
A collection of 7 artifacts  
Gift of Dorothy H. Leaming,  
2010.208–2010.214

## Artist Unknown

Sterling Silver Dish  
2 x 10 x 8 inches  
Gift of Nancy Rajala, 2010.215

## Theodoros Stamos

American, 1922–1997  
**Infinity Field, Olympia III**  
screenprint on paper, 1972  
22 x 30 inches  
Gift of Nancy Rajala, 2010.216

## Jim Waid

American, b. 1942  
**Sonoran Bones** ▶  
acrylic on canvas, 2003  
72 x 84 inches  
Gift of Bob Greenberg,  
2010.217

## Alex Guofeng Cao

Chinese, b. 1969  
**Jackie vs. JFK II**  
chromogenic print, 2010  
60 x 40 inches  
Gift of Edward and Sandra  
Neustadter, 2010.218

## Neal Ambrose Smith

American, b. 1966  
**Charley Two Eagles**  
lithograph and monotype on  
paper, 2008  
30 x 22 inches  
museum purchase, 2010.219

## Karsten Creightney

American, b. 1976  
**Water Lilies**  
lithograph on paper, 2010  
22.5 x 28.5 inches  
museum purchase, 2010.220

## Karsten Creightney

American, b. 1976  
**Untitled (Love Flower/Thistle)**  
ink and color pencil over  
lithograph and screenprint,  
2009  
27.5 x 22.5 inches  
museum purchase, 2010.221

## Renee Stout

American, b. 1958  
**A Vision I Can't Forget**  
lithograph on paper, 1999  
27 1/2 x 18.75 inches  
museum purchase, 2010.222



## Jaune Quick-To-See Smith

Native American, b. 1940  
**A Chart of the Human Body**  
woodcut and lithograph on  
paper, 2005  
27 x 20 x inches  
museum purchase, 2010.223

## Judy Pfaff

American b. England, b. 1946  
**Horror Vacui**  
painted steel and wire, 1988  
118 x 256 x 108 inches  
museum purchase, 2010.224

## George Sugarman

American, 1912–1999  
**Garden**  
painted aluminum, 1985  
26 x 30 x 28 inches  
museum purchase, 2010.225

## Edmund Lewandowski

American, 1914–1998  
**Flint Cityscape**  
pencil and gouache on  
paperboard, 1956  
6 x 11 inches  
Gift of Franklin Riehlman Fine  
Art, 2010.226

## featured acquisition

### Judy Pfaff

Judy Pfaff creates sprawling sculptures and installations that combine landscape, architecture, and color. Her sculptures, which are composed of steel, fiberglass, plaster and found materials, fluctuate between the two- and three-dimensional, often giving the illusion of weightlessness with forms dramatically extending from the wall into the viewer's space. *Horror Vacui*, was included in the exhibition *Judy Pfaff* at the Flint Institute of Arts, and has now been purchased for the permanent collection.



Judy Pfaff was born in London, England in 1946 and at the age of 13 settled in Detroit, Michigan. She received her B.F.A. from Washington University and her M.F.A. from Yale University, where she met Al Held, who had a strong influence on her work. Since the 1970s, Judy Pfaff has mingled drawing, painting, and sculpture in her installation, art filling every inch of available space with color, line, shapes and texture. The FIA owns a large drawing by Al Held (installed across the hall from the Fleckenstein Video Gallery) which exemplifies his interest in geometric shapes intersecting at different planes in space. Judy Pfaff's work also incorporates geometric shapes, but rather than staying within the confines of two-dimensional work, she creates wall sculptures out of wire, metal, and numerous other found materials.

**Judy Pfaff**  
American b. England, b. 1946  
*Horror Vacui*  
painted steel and wire, 1988  
118 x 256 x 108 inches  
museum purchase, 2010.224

## art on loan

The following artwork is on loan from the FIA to the exhibitions:

### Sargent & Impressionism

**Adelson Galleries**  
New York, New York

11/2/10 – 12/18/10



**John Singer Sargent**  
American, b. Italy, 1856–1925  
*Garden Study of the Vickers Children*  
oil on canvas, 1884  
54.5 x 36 inches  
Gift of the Viola E. Bray Charitable Trust  
via Mr. and Mrs. William L. Richards,  
1972.47

### Dutch Utopia: American Artists in Holland 1880–1914

**Singer Museum**  
Laren, The Netherlands

9/15/10 – 1/6/11



**Letta Crapo Smith**  
American, 1862–1921  
*The First Birthday*  
oil on canvas, 1904  
56.5 x 41.875 inches  
Gift of Mrs. Jay C. Thompson, 1967.10

### Edmund Lewandowski: Precisionism & Beyond

**Winthrop Galleries**  
Winthrop University,  
Rock Hill, SC

9/6/10 – 12/9/10



**Edmund Lewandowski**  
American, 1914–1998  
*Dynamo*  
oil on canvas, 1948  
36.125 x 30.875 inches  
Gift of Mr. and Mrs. Harold L. Frank, by  
exchange, 1993.38

**Edmund Lewandowski**  
American, 1914–1998  
< *Great Lakes Shipbuilding*  
oil on canvas, 1949  
30 x 24 inches  
Courtesy of the Isabel Foundation,  
Inlander Collection, L2003.81

**Edmund Lewandowski**  
American, 1914–1998  
*Preliminary Sketch for Production  
Line Buick Corp.*  
pastel and gouache on board, 1956  
6.5 x 10.5 inches  
Gift of Franklin Riehman Fine Art,  
2004.37

foma films



**November 5, 6, 7**

**Get Low**

(U.S., 2010) Directed by Aaron Schneider, 100 min., rated PG-13  
The ageless Robert Duvall stars in a comedy-drama based on the true story of a 1930s Tennessee backwoods recluse who attracts national attention by throwing himself a “living funeral” party. Sissy Spacek, Bill Murray and Gerald McRaney also appear in this heartwarming film.



**November 12, 13, 14**

**The Concert**

(France/Italy/Russia, 2009) Directed by Radu Mihaileanu, 119 min., subtitled, rated PG-13  
This uplifting comedy concerns a true band of misfits: a Russian orchestra reunited after 30 years by its conductor, now a lowly janitor, for a concert in Paris. Hardships loom for these surprise musicians, who hope their experience will turn out to be a triumph.



**November 19, 20, 21**

**I Am Love**

(Italy, 2010) Directed by Luca Guadagnino, 120 min., subtitled, rated R  
Tilda Swinton stars as the Russian-born wife of an Italian aristocrat who enters into an affair with a friend of her son. Tradition and emotion clash in what Roger Ebert calls “an amazing film... deep, rich, human... not about rich and poor, but about old and new.”



**December 3, 4, 5**

**Restrepo**

(U.S., 2010) Directed by Tim Hetherington and Sebastian Junger, 93 min., rated R  
The grueling experience of combat is vividly conveyed in a documentary that covers 14 months with one U.S. Army platoon in the deadliest valley in Afghanistan. “Belongs on the short shelf of essential 21st-century combat movies,” says The New York Times.



**December 17, 18, 19**

**Heartbreaker**

(France, 2010) Directed by Pascal Chaumeil, 105 min., not rated  
Vanessa Paradis (the French actress who is Johnny Depp’s longtime paramour) stars in a charming romantic comedy about a professional relationship specialist who must prevent a rich young lady from marrying an English millionaire. And he’s got only one week to do it.

**Screenings**  
Fri & Sat @ 7:30p  
Sun @ 2p

**Donations**  
\$5 members  
\$6 non-members  
\$4 FOMA members

FOMA Films are supported by



**November 11, 12, 13**

**Paintball**

(Spain, 2009) Directed by Daniel Benmayor, 90 min., not rated  
The term “weekend warrior” takes on a whole new meaning. It’s a Spanish horror thriller about eight strangers who sign up for a weekend paintball adventure but who instead face a gripping fight for survival in the wild.



special screenings

Thu @ 9p  
Fri & Sat @ 10p

Thursday admission is FREE to patrons with college ID or FIA College Town membership



**November 26, 27, 28**

**Mao's Last Dancer**

(Australia, 2010) Directed by Bruce Beresford, 117 min., rated PG  
From the maker of “Driving Miss Daisy” and “Tender Mercies” comes a fact-based drama about a poor Chinese youth who finds freedom and love through dance. Bruce Greenwood, Kyle MacLachlan and Joan Chen are familiar names in the cast.



**December 10, 11, 12**

**The Girl Who Kicked the Hornet's Nest**

(Sweden, 2009) Directed by Daniel Alfredson, 148 min., rated R  
Intrepid Swedish journalist Mikael Blomkvist works to clear computer hacker Lisbeth Salander of murder, as she faces powerful enemies and her own tragic past.



at last... the final installment of the trilogy

Based on the worldwide best-selling novels by Stieg Larsson





## fia print society 2010

This year, the Flint Institute of Arts is working with artist Mary Lee Bendolph, who you may remember from the exhibition *Mary Lee Bendolph, Gees Bend Quilts and Beyond* shown at the FIA January 23 through April 18, 2010. She is creating a special print specifically for the FIA Print Society much like her prints that were included in that exhibition. We expect this print to be very popular, so be sure to sign up right away to ensure that you will receive one. The image shown is a proof, the colors may differ slightly from the finished print.



Mary Lee Bendolph  
American, b. 1935  
*Hope*  
etching and aquatint on paper, 2010  
21 x 23 inches, edition of 100

**For more information** about the FIA Print Society, contact Valarie Shook at 810.234.1695 or [vshook@flintarts.org](mailto:vshook@flintarts.org).

## Print Fair

**December 11–12**  
Isabel Hall

The fair will include several different print dealers featuring a wide range of prints from Old Masters to Contemporary works. Prints will range in price from \$200 to several thousand dollars. This is an ideal opportunity for novice collectors to start a collection and for connoisseurs to add works to existing collections.

**Print Society Members  
Only Preview & Reception**

Friday, Dec 10 • 6p–8p  
(*Preview the Fair, meet the dealers, and receive the 2010 print by Mary Lee Bendolph.*)

**Members & Public**

Saturday, Dec 11 • 10a–5p  
Sunday, Dec 12 • 1p–5p

**Rubens  
Society  
Holiday  
Dinner**



**Saturday  
December 18**  
Cocktails @ 7p  
Dinner @ 8p

The Rubens Society Holiday Dinner is one of the most beautiful and festive evenings at the FIA. Rubens members will soon receive their invitations with all the details of the evening.

If you would like information on becoming an FIA Rubens Society member, please contact the Membership Coordinator, Valarie Shook, at 810.234.1695 or email [vshook@flintarts.org](mailto:vshook@flintarts.org).

**Yes, I want to be a member of the FIA Print Society 2010.**

**Membership Information**

Circle: Dr. Mr. Mrs. Ms. Miss

Name \_\_\_\_\_

Address \_\_\_\_\_

City \_\_\_\_\_ State \_\_\_\_\_ Zip \_\_\_\_\_

Phone \_\_\_\_\_

Email \_\_\_\_\_

**Method of Payment**

Check payable to "FIA Print Society"

Visa  MasterCard  American Express

Account # \_\_\_\_\_ Exp. Date \_\_\_\_\_

Signature \_\_\_\_\_

I am currently an FIA member at the \$50 level or higher (see page 25 for levels).

I would like to upgrade my membership or join the FIA at the \$50 level or higher with an additional:  
\$ \_\_\_\_\_

+ \$250.00 FIA Print Society dues

= \$ \_\_\_\_\_ **Total Payment**

**Please return form and payment to:**  
Flint Institute of Arts  
Print Society  
1120 E. Kearsley St.  
Flint, MI 48503

**27th Annual  
Holiday Walk  
2010**

**Tuesday, December 7  
5:15p–8:30p**

Flint Cultural Center

The FIA is pleased to present a magnificent evening of live musical entertainment scattered throughout the galleries. The celebration begins with a tree lighting at 5:15p in the Durant Plaza between Sloan Museum and The Whiting. Along with many charming performances, the Flint Symphonic Wind Ensemble will once again be the grand finale at the FIA as they perform their rousing renditions of classic holiday tunes. Let your kids view a



fun holiday film in the FIA Theater and participate in the FIA Art School's Open House activity. Come and enjoy the festivities!

*The FIA's portion of this event is generously sponsored by: The Children's Office, Dr. Kienan Murphy.*

Founders Society &  
the Flint Institute of Arts  
are pleased to present

# FIRST Arts & Fine FRST Crafts Fair

## Shop the Artists

Featuring over 40 new and returning selected artists displaying handmade items created from fiber, wood, metal, clay, glass and mixed media, all wonderful gifts for the holiday shopper! Artist booths are located in Isabel Hall and the C.S. Mott Gallery Wing.

**Sat, Nov 6**

10a – 5p

**Sun, Nov 7**

11a – 4p

\$5 General Admission  
\$4 Senior 62 & above  
Free Children 12 & under

## Glass Blowing Demonstrations

Back by popular demand, live glass blowing demonstrations by Charlie Shoulders (*Living on the Etch*) will be located in the Hurand Sculpture Courtyard!

## Festival of Trees

Don't miss bidding on your favorite holiday tree or wreath! Beautifully decorated and fun-themed trees and wreaths created by local designers, florists and volunteers are available for purchase through a silent auction during the festival weekend.



FLINT INSTITUTE OF ARTS



FOUNDERS  
SOCIETY

## call for applications

### Pre-College Portfolio Development Program

Applications due December 17, 2010  
Freshman session begins February 2011

The Pre-College Portfolio Program is designed to strengthen the fundamental skills of gifted high school art students and strengthen their portfolio for college entrance. Emphasis is placed on drawing, color theory, three-dimensional design concepts, and careers in the arts.

To receive an application packet (Freshmen receive priority enrollment), please call the Art School office at 810.237.7315.



Kacie Forbes, charcoal drawing

## children's activity

### Holiday Art Camp

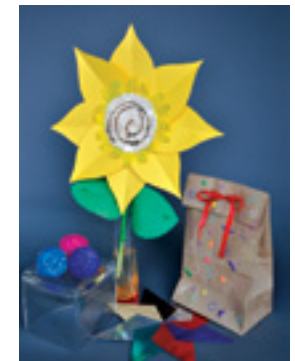
**November 26 • 9a–4p**

**November 27 • 10a–5p**

Art School Studios

Join us for a hand-made holiday tradition! Each camper (ages 5–12) will create unique gifts for family and friends while exploring a variety of tools, mediums and techniques. Campers may sign-up for one or both days. Send a lunch and snack with your child.

Members \$67 Non-members \$81 (per day)



## exhibition

### Faculty & Youth Exhibition

**November 15 – January 2**

Bishop Gallery & second floor hallway

The opening reception is November 17, 4:30p–6:00p. View the diverse talents of the faculty and young students. The faculty will answer questions about studio processes and you may discover your next faculty mentor. Light refreshments will be served.

Alla Dubrovich, gouache and colored pencil drawing

## art à la carte

Art à la Carte is a series of informative programs focusing on the arts. It is offered free of charge on Wednesdays at 12:15p. Visitors are encouraged to bring lunch or pick-up something from the FIA Café. Coffee, tea and cookies are provided. All programs are held in the FIA's Isabel Hall.

### November 3

#### Cuban Artists' Books & Prints Libros y Grabados de Artistas Cubanos: 1985–2008

Enter the Cuban art scene and go into the studios and homes of Cuban artists and into the workshop of Ediciones Vigía (Vigía Press), a collective of handmade-book artisans, artists, and editors located in Matanzas, Cuba. *20 min.*

#### Luminous Shadows, The Artists of Eastern Cuba

Take an insightful journey through Oriente, the easternmost region of Cuba and meet the most highly acclaimed artists of this culturally rich area. Studio visits and interviews are included. *43 min.*

### November 10

#### Riches, Rivals & Radicals

Discover the commanding and charismatic characters whose fervor fueled the 20th-century revolution that changed America's museums from dusty and elitist to dynamic and democratic! *43 min.*

### November 17

#### Great Museums - George Eastman House: Picture Perfect

This program tours the historic George Eastman House in Rochester, New York—the oldest photography museum in the world—to showcase its famous collections. The Eastman House is a vital stop on the journey to understanding visual literacy. *28 min.*

#### Great Museums - Pennsylvania Academy of the Fine Arts: Art Gets a Start in America

Go behind the scenes at the Pennsylvania Academy of the Fine Arts to consider the evolution of painting in America. *30 min.*

### November 24

#### Great Museums - The Metropolitan Museum of Art: A World of Art

This program opens the door to New York City's renowned Metropolitan Museum of Art, a vast collection of treasures spanning 5,000 years of world culture. *52 min.*

### December 1

#### Between the Folds

Between the Folds chronicles the stories of 10 fine artists and intrepid scientists who abandoned careers to forge unconventional lives as modern day paperfolders. The film paints an arresting portrait of the remarkable artistic and scientific creativity that fuels this ever-changing art form, fusing science and sculpture, form and function, ancient and old. *56 min.*

### December 8

#### The Collector: Allan Stone's Life in Art

Director/creator Olympia Stone takes us into the unique, zany, brilliantly cluttered world in which she grew up, offering a very personal glimpse of her remarkable father, Allan Stone. Stone was an art collector as well as one of New York's most successful and mercurial gallery owners. He gave wings to many contemporary artists, most famously Wayne Thiebaud, with whom he had a lasting and deeply personal friendship. *62 min.*

### December 15

#### Masterpiece or Forgery?

Elmyr de Hory made over 1000 forgeries before he died—or disappeared—in 1976. Many respected museums own what they believe to be a valuable “Modigliani” or “Matisse,” but could be a “de Hory.” *60 min.*

### December 22

#### Don Quixote: Legend of a Classic

This program weaves art, music, and literature with a Western culture to explore the enormous impact of Cervantes' classic on our world today. Artists, critics and others, from novelist Carlos Fuentes to General Norman Schwarzkopf, reveal how the work—the most translated in history—has affected their lives. *58 min.*

Sponsored by:



The Merkley-Elderly  
Charitable Trust

## family programs



### Family Film: Fantastic Mr. Fox

November 26 11a & 1p

FIA Theater

The mean old farmers—fat Boggis, squat Bunce and skinny Bean have joined forces and have Mr. Fox and his family surrounded. What they don't know is that they are not just dealing with any old fox—it's Fantastic Mr. Fox, and he has a fantastic master plan to save the day! The top-notch vocal cast features George Clooney, Meryl Streep, Jason Schwartzman, Bill Murray, Michael Gambon, and Owen Wilson, who create vivid personalities that perfectly mesh with the movie's lush colors and luscious textures. Rated PG.

## bray lecture

**Rick Shick & Superman Returns****November 27 4p**

FIA Theater

*Guest Lecturer***Rick Shick**

*Creative Director,  
Arnsen Communications  
Hollywood, California*

**Free admission**

Rick Shick has been involved in the entertainment industry since 1993 when he got a job working on the second season of *Power Rangers* as a visual effects artist. Since then, he's worked on various projects in numerous media: commercials, television shows, movies, and video games. In 2007, two sides of his entertainment career crossed in an unexpected, challenging, and rewarding way. Rick worked on the movie *Superman Returns* and directed a cinematic for *Superman Returns: The Video Game*. For the movie *Superman Returns*, Rick was brought in at the last minute to finish one shot for the film. As the director for *Superman Returns: The Video Game*, Rick's responsibilities were vast. He was involved on every level: creating a narrative and storyboards, acting out motion capture, helping with editing, supervising a 3-D vendor, and doing the final polish. In this illustrated presentation, Rick will discuss his work on the two Superman projects.

A Flint native, Rick has a B.A. in Art History and a B.F.A. with a concentration in figurative sculpture from the University of Michigan, Ann Arbor. During his career in the entertainment industry, he's made models, shot live action elements, supervised actors on set, hand drawn visual effects like lightning, created and puppeteered things like dragons, set *Ghost Rider* on fire, and even played video games—all in the name of work.

*The Bray Lectures  
are made possible  
by the Viola E. Bray  
Charitable Trust.*

Sponsored by

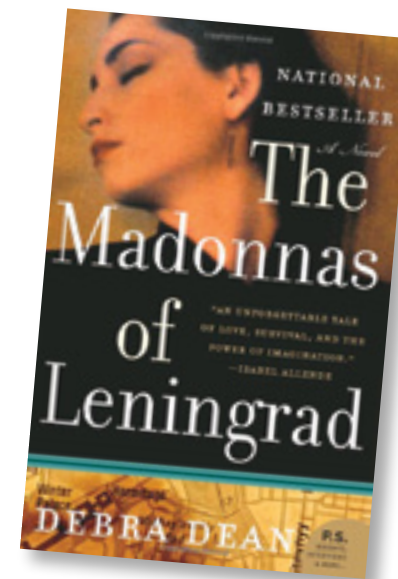
**WKAR**

## book discussion

**The Madonnas of Leningrad:  
A Novel by Debra Dean****November 4 & 18 7p**

Members Room

Focusing on Debra Dean's *The Madonnas of Leningrad*, this program explores the power of memory. The novel focuses on Marina Buriakov, a Russian émigré whose descent into Alzheimer's has her and her family experiencing more anxiety than joy. As the details of her present-day life slip mysteriously away, Marina's recollections of her early years as a docent at the State Hermitage Museum become increasingly vivid. On November 4, we'll set the stage by looking at the works of Rembrandt, Rubens, and Raphael. Two weeks later, we'll meet to discuss the novel. Books are available in the Museum Shop.

**Free admission**

## educator workshops

Educator workshops are designed for pre- and in-service teachers, home school parents, and volunteers. SB-CEUs are available through the Genesee Intermediate School District and graduate credit is available through the University of Michigan-Flint.

**Kinesthetic Learning: Rhythm in Art, Poetry & Dance****November 20**

In this workshop you will use your kinesthetic ability to learn about the Harlem Renaissance and artist William H. Johnson. We'll focus on his "Jitterbug" paintings and incorporate music, movement, and visual arts inspired by Johnson's art.

\$75 per workshop includes all materials. Online payment is accepted through PayPal at [flintarts.org](http://flintarts.org).

10% discount for 3–5 workshops  
20% discount for 6–7 workshops

Bring a lunch or purchase one in The Café.

**For more information**, contact the Education department at 810.237.7314 or [flintartsed@mac.com](mailto:flintartsed@mac.com)

## art sales & rental gallery

### November/December Featured Artist

#### Artist Reception

Sunday November 7 1p-3p

### Peggy Reimel Abrams

Peggy Reimel Abrams is an internationally known self-taught artist who was born and raised in Michigan. She uses a variety of mediums and is most well known for her Christmas themed artwork, but enjoys doing children's portraits, landscapes, and florals.

Peggy's work is now recognized around the world in print and licensed product lines. Her Santas have become a commercial success and continue to be in demand by consumers and collectors. Her work has created so much interest that she is now working on a collector's book that will detail the history and motivation behind her Santa paintings.

Peggy Reimel Abrams  
*White Christmas*  
watercolor  
24 x 20 inches



#### Hours

Tue-Fri: 10a-5p, Sat: 11a-3p,  
Sun: 1p-5p *or by appointment*

**For information**  
810.237.7321

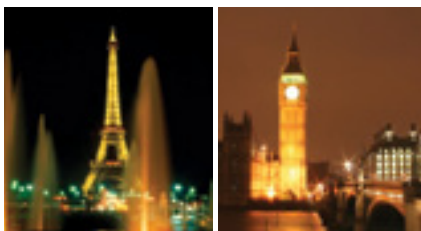
## founders travel

### London & Paris

NOV 3-10, 2011

8 days

**Per Person Rates** \$2,999 (double)



Enjoy dinner at a traditional English Pub, cross the English Channel aboard the innovative high speed Eurostar Train, dinner at the Eiffle Tower features wonderful French cuisine and breathtaking views of Paris.

#### Included

- 6 breakfasts, 4 dinners
- London theatre performance
- Seine River cruise
- Eiffel Tower dinner
- 3 nights stays in both cities

**For additional information,**  
contact Billie Fisher at 810.232.6867 or  
Diane Roberts at 810.629.4270.

Membership contributions are a significant part of the Flint Institute of Arts operating income.

\* An asterisk indicates the names of those who have upgraded their memberships with a larger contribution.

+ A plus indicates the names of Friends of Modern Art (FOMA) members.

#### Family

(\$50 annually)

Ms. Elizabeth Aderholdt  
Mrs. Neketia Alyatim  
Mrs. Patricia Beauvais  
Mr. & Mrs. Conrad Bontrager  
Mr. & Mrs. Rodney S. Branch  
Ms. Pat Buerkel & Ms. Tammy Williams

Mr. & Mrs. Samuel Burdick  
Mr. Terry Castor

Ms. Deborah J. Cindric  
Ms. & Mr. Julie Coe  
Mr. & Mrs. Roger Crist  
Mr. & Mrs. Peter Drossos  
Mrs. Selma L. Eisner+  
Mr. & Mrs. Travis Emmons  
Letrice & Frankie Ferguson  
Mr. & Mrs. Thomas French  
Ms. Susan C. Frey  
Mr. James Garno

Mr. & Mrs. John Gartrell+  
Ms. Jan Hansen  
Mr. & Mrs. Peter Hasbrook  
Mr. James Horton  
Mrs. Michelle M. Hudson  
Mr. & Mrs. Tom Janos  
Mr. & Mrs. Tom King  
Mr. Michael Knag+

Mr. & Mrs. James Kummer  
Mr. & Mrs. Gary LaClair  
Mr. & Mrs. David Lawson  
Mrs. Leesa Lee

Mrs. Patty Lee & Family  
Ms. Tamar Lewis

Mr. & Mrs. Curtis Lichty  
Ms. Alice Martin

Mrs. Lisa Masi & Family  
Mr. & Mrs. Sean McCormick

Mr. Joseph Mishler  
Mrs. Mary Mullally & Family

Mark Neithercut, Neithercut  
Philanthropy Advisors

Mr. & Mrs. James Nichols  
Mrs. Julia Nielsen

Ms. Jacquie Osborn  
Mrs. Candace Pfaff

Atty. Tricia Raymond-Ponsetto &  
Mr. Richard Ponsetto

Mr. Brad Reese

Mr. Brad Reynolds

Ms. Vicki Richert  
Ms. Stephanie Shellhaas

Mr. Michael J. Smith  
Mr. & Mrs. Scott Telke

Ms. Marilyn Tesler  
Ms. Vanessa Tesler

Mr. Michael P. Watchowski  
Mr. & Mrs. Barney Whitesman

Mr. Andrew D. Williams  
Ms. Meghann Windle

Mrs. Barrie Lynn Wood

#### Dual

(\$40 annually)

Mr. & Mrs. William Borden+  
Mr. & Mrs. James Dean  
Mr. & Mrs. Fred Farah  
Mr. William Gardner  
Mr. & Mrs. Brad Scanlan  
Mr. & Mrs. John Topping

#### Individual

(\$30 annually)

Mr. John Blankenship  
Ms. Karen Braschayko  
Ms. Shirley Brown+  
Mr. Justin Clanton  
Mrs. Susan Cooper  
Miss Vanessa Dendy+  
Ms. Kathleen Duval  
Ms. Sandra Everill  
Mrs. Sue A. Faley+

Ms. Amy Freeman-Rosa+  
Mrs. Esther Galuszka

Ms. Diane M Granger  
Ms. Pamela Grozdon

Miss Jordan Habitz  
Ms. Sandra L. Haldy

Ms. JoAnne Hatto  
Ms. Ann L. Hodges

Ms. Erycka Hunter  
Ms. Heather Jackson

Ms. Natalia LaFuente  
Mrs. Val Magnuson

Ms. Katherine Maitland  
Pat Martino

Ms. Sandra Murphy  
Mrs. Karen Nestle

Ms. Susan Pekarek  
Ms. Brandy L. Pickens

Mrs. Linda G. Podgorski  
Ms. Jane Schepler

Ms. Debra Schnettler  
Ms. Janice Smith

Mrs. Mary Sprague  
Mr. Toby Wessel

#### Student

(\$20 annually)

Mr. Nicholas Melton  
Ms. Jelissa Skinner

#### Youth

(\$20 annually)

Lauren Forbes  
Duncan Hagen  
DeMarcus Lacy  
George Mask  
ZaReah Phelps  
Alexandria Schunot

*Dues received*

**7.13.10 – 9.10.10**

### Rubens Society Individual Members

(\$1,000 & above annually)

Dr. Jamile T. Lawand & Mr. Barry J. Carr

### Individual Members

#### Sponsor

(\$250 annually)

Mr. Mark Lantz

#### Sustainer

(\$100 annually)

Ms. Gillian Abbott  
Dr. Stephen Blake  
Ms. Mary Mavity+  
Ms. Carlene VanVoorhies+  
Ms. Ethel Wegienek  
Mr. & Mrs. Wolfgang Zientek+

## Rubens Society

### CORPORATE

(\$1,000 annually)  
Citizens Bank  
Genesee Urgent Care

### INDIVIDUAL

(\$1,000 & above annually)  
Mr. & Mrs. Robert K. Armstrong  
Dr. William M. Bowling  
Mr. & Mrs. Robert S. Fuller  
Falding B. Gadola  
Mr. & Mrs. John Kopp+  
Dr. & Mrs. Paul Lauber\*  
Mr. Max Lepler & Mr. Rex L. Dotson  
Mr. & Mrs. William H. Moeller  
Dr. & Mrs. Daniel J. Ryan\*+  
Ms. Susan E. Thompson  
Dr. & Mrs. Jay A. Werschky+

## Corporate Members

**Corporate Sustainer**  
(\$100 annually)  
The Chosen Few Corporation

## Individual Members

**Sponsor**  
(\$250 annually)  
Mr. & Mrs. David F. Barbour+  
Mr. & Mrs. Max Dean  
Mr. & Ms. Roger H. Gillespie-Brown+  
Mr. & Mrs. Henry M. Hanflik+  
Mr. & Mrs. David C. Miller\*  
Mr. & Mrs. H. William Reising\*

**Sustainer**  
(\$100 annually)  
Mr. & Mrs. Joseph Abbott\*  
Mr. & Mrs. Henry Allen  
Mr. & Mrs. Michael J. Behm  
Mr. & Mrs. Donald A. Bomeli  
Mr. & Mrs. Jonathan E. Burroughs II  
Ms. Pamela M. Daoust  
Dr. & Mr. James Dowsett  
Mr. Chris & Dr. Jean Dundas  
Murray & Sharon Eisen+  
Mr. & Mrs. Ed Fizell\*

Mr. George Freeman & Mrs. Emily Tibbetts-Freeman+  
Mrs. Florence J. Fugenschuh+  
Mr. Tendaji W. Ganges+  
Frankie & Robert Hardy+  
Ms. Barbara H. Horcha & Mr. William Cross  
Mr. & Mrs. Jeffrey Hurand  
Mr. & Mrs. Al Johnston  
Mr. & Mrs. Hal Keim\*  
Ms. Linda C. Keller & Mr. Donald J. Mosher+  
Mr. & Mrs. John E. LaBosque  
Mr. and Mrs. Laurence E. MacDonald+  
Dr. & Mrs. Peter K. McLeod\*  
Mr. & Mrs. Ted Meadors+  
Mr. & Mrs. Robert W. Miskow+  
Mrs. Doris A. Moellering+  
The Myatt Family\*  
Ms. Jeanne Pepper & Mr. Thomas Herman\*  
Mrs. Sharon A. Peterson  
Mrs. Beverly I. Post+  
Mr. & Mrs. Edward J. Preville+  
Ms. Dovey Richter\*  
Mr. & Mrs. Carl Riseman  
Mr. & Mrs. Marshall H. Sanders, Jr.+  
Ms. Janet A. Schultz+  
Dr. & Mrs. Johannes Tall  
Mr. & Mrs. Charles V. White+  
Keith & Kim Whitmore+  
Mr. David E. Wood+

**Contributor**  
(\$50 annually)  
Judge & Mrs. Earl E. Borradaile  
Dr. & Mrs. Marshall Cossman\*  
Mr. Jason Dake\*  
Mr. & Mrs. Delmar D. Davis+  
Mr. & Mrs. Daniel Dowling  
Mr. & Mrs. Lawrence C. Goldman  
Ms. Shelly L. Hoffman & Mr. Brian Haggard  
Mrs. Joan M. Horcha & Mr. Jerry J. Haddad\*  
Mrs. Almeda B. Hunter  
Mrs. Mary Ittigson  
Mr. Sam Jones & Dr. Beverly Jones  
Mrs. Geraldine Joyner\*  
Mr. Miles Lam\*  
Mr. & Mrs. Stephen S. Landaal\*  
Levine-Day Family\*  
Mr. Michael Martin & Mr. Bryan Paris  
The Navock Family  
Ms. Patsy Noffsinger\*+

Mr. & Mrs. Peter Ott  
Mrs. Janet Roelle  
Mrs. Patricia A. Sheehy  
Mr. & Mrs. Paul N. Torre

**Family**  
(\$50 annually)  
Mrs. Joellen Arvoy  
Mr. & Mrs. Robert Aurand  
Mrs. Barbara Barrell  
Ms. Kenya Batson & Family\*  
Dr. & Mrs. Henry Beckmeyer+  
Mr. & Mrs. Donald L. Bell  
Mr. Fred Bellairs\*  
Mr. & Mrs. Joe Blakely  
Ms. Tracy Bradish & Family\*  
Mr. & Mrs. David Brandt  
Mrs. Doris E. Brandt\*  
Mr. & Mrs. Barry Braun  
Ms. Betty Brown  
Mr. & Mrs. Richard J. Caloia  
Mr. & Mrs. Elwood Chipman+  
Mr. & Mrs. Michael E. Cooney  
Mr. & Mrs. William Courneya+  
Mr. Robert L. Daly  
Dr. & Mrs. Robert A. Davis+  
Mrs. Cheri Dickinson  
Dr. Tracy Edwards  
Mr. & Mrs. Richard Foor  
Ms. Christine Gleason & Mr. Jim Zembo  
Ms. Donna Gohs  
Mr. & Mrs. Matthew A. Grady  
Mr. & Mrs. Nicholas Groves+  
Dr. & Mrs. Franklin W. Hamilton\*  
Mr. & Mrs. W.R. Horning  
Ms. Thressa N. Horton\*  
Ms. Valorie Horton\*  
Mr. & Mrs. James Jarvis  
Dr. David M. Johnston+  
Ms. Bernadette Jolly & Family  
Dr. & Mrs. Mark H. Knight  
Mrs. Ruth Leder  
Ms. Barbara K. Main\*  
Ms. Alon Marie & Mr. William Coulter  
Mr. & Mrs. Todd Marsh  
Charles & Sue Martell  
Mrs. Michele Matthews  
Mrs. Melissa Maxwell-Cook & Mr. Lonnie Maxwell-Cook  
Mr. Rafael Mojica & Mrs. Yolanda Mojica  
Mr. Michael Morse  
Mrs. Patricia A. Noyle+  
Ms. Frances J. Price  
Ms. Diane Ramsey\*  
Mr. & Mrs. Melvyn R. Rettenmund

Mr. Ed Roberts & Mrs. Shelly Stewart-Roberts  
Frank & Linda Roberts+  
Mr. & Mrs. Alan Rohde  
Mr. & Mrs. Richard J. Ruhala  
Ms. Mary Scott\*  
Dr. David Sergy  
Dr. & Mrs. Kirtikant Shah  
Dr. Janice Shimoda+  
Mr. Michael Sprague & Dr. Janet Sprague  
Mr. & Mrs. Jon Talarico\*  
Mr. & Mrs. James Taylor  
Mr. & Mrs. Daniel Van Norman  
Mr. Robert C. Vince & Ms. Connie Tambling  
Mrs. Linda Waldo  
Ms. Ruth Winter & Mr. Tom Thibault+  
Mr. & Mrs. Keith Wolfgram  
Mr. & Mrs. Daniel Wozniak+  
Mr. & Mrs. Paul Zang  
Mr. & Mrs. Eugene J. Zofchak+

**Dual**  
(\$40 annually)  
Mr. & Mrs. Jon Baugher\*  
Mr. & Mrs. James Boles\*  
Ms. Judith Deraad & Mr. William Connor\*  
Mrs. Laura J. Fuller\*  
Mrs. Nancy Lewandowskyj\*  
Mr. & Mrs. Fred Luten\*  
Dr. & Mrs. William McAllister+  
Ms. Catherine McGuire\*  
Dr. & Mrs. Harry Meisner+  
Mr. & Mrs. Theodore T. Zahrfeld

**Individual**  
(\$30 annually)  
Mrs. Joanne Anderson  
Ms. Amy Black  
Mr. Avery Boone  
Ms. Tracy Brewington  
Mrs. Linda L. Brown  
Dr. Betty Brown-Chappell  
Mrs. Kathleen L. Cantley  
Dr. Christina R. Consiglio  
Ms. Betty L. Dell  
Mrs. Kathy L. Dotson  
Mrs. Lynn Elliott+  
Mrs. Kimberley Emmert  
Mr. George Ensinger  
Ms. Ida L. Epstein+  
Ms. Carol Fray  
Mr. John A. Giolitti  
Ms. Grace Glass  
Ms. Karen A. Gould

Ms. Regan Guevara+  
Ms. Catherine Gwizdz  
Ms. Jenny Harris  
Ms. Jean Hawkins  
Ms. Trudy Herriman  
Ms. Melissa S. Hill  
Mr. Ramon Hill  
Mr. Keith F. Holt  
Mrs. Linda M. Hoover  
Mrs. Alma Hourvitz  
Ms. Lynn Husby+  
Miss Sheryl Kreiner  
Ms. Lisa M. Land  
Mrs. Kathy Liggett  
Ms. Marion K. Mann+  
Ms. Debbie Manning  
Mrs. Judy McGovern  
Ms. Sharon Muston  
Mr. Thomas L. Myers  
Ms. Ruth A. O'Connell  
Mrs. Patricia Olszewski  
Ms. Jolene Padgett  
Ms. Brenda J. Price  
Ms. Suzanne Rosser  
Ms. Mary Louise Roth+  
Miss Jenette Schanick\*  
Mrs. Mary Schiros  
Ms. Margaret Simen+  
Mrs. Julie Smithson  
Mr. Paul Stirling  
Ms. Janice Tessner  
Mr. John Tracy  
Mrs. Rosemary Vuckovich  
Mrs. Renee Wagner  
Ms. Georgia R. Walker  
Rev. Al Wamsley  
Mr. Robert Weishaupt  
Ms. Adrienne S. Wells  
Mrs. Joyce Wheat+  
Ms. Eliza Wong  
Mrs. Mary Yauch

**Student**  
(\$20 annually)  
Miss Amy Green  
Mr. Charles Parker II+

**Youth**  
(\$20 annually)  
Zachary Cain  
Ellary Morris  
Payton Ranville  
Paige Thwing

*Dues received*  
**7.13.10 – 9.10.10**

### Levels

<b>Youth</b> (2.5–12)	\$20
<b>Student</b> (13 to college)	\$20
<b>Individual</b>	\$30
<b>Dual</b> †	\$40
<b>Family</b> ††	\$50
<b>Sustainer</b>	\$100
<b>Sponsor</b>	\$250
<b>Donor</b>	\$500
<b>Rubens Society</b>	\$1,000+

† 2 adults  
†† 2 adults + children 18 & under

The Flint Institute of Arts gratefully acknowledges the generosity of the following donors who have supported the Institute with contributions.

thank you

## Capital Campaign

### INDIVIDUAL

**Silver Patron**  
(\$5,000–\$9,999)  
Ms. Kimberly Cross

### In Honor

Special thanks to Bob Piper  
Chuck & Kathryn Sharbaugh

### Memorials

*In memory of Corrine Benson*  
Ms. Carol Bingham  
Kathy's tennis family at Genesys  
Athletic Club  
Ms. Elaine Paden  
Tim, Honor, Zach, & Katye Reed  
Mr. Bruce W. Rosebrugh

*In memory of Margaret "Maggie"  
Hirsch LeVine*  
Cathy Rudner Yourofsky, Rhonda  
Rudner, Lynn Jamieson

*In memory of Virginia J. Gibbons*  
Thomas and Diane Fraser

*In memory of Clara Kazyak*  
Mrs. Barbara A. Yanta

*In memory of Judy Piper to  
benefit the Stephen Knapp Light  
Painting*  
Ms. Barbara K. Main

*In memory of Marion Pohrt*  
Garland Trust Literary Club

*In memory of Peggy Shedd*  
Ms. Diane Burgett

### Endowment Gifts

*Individual Gifts*  
Ms. Deborah J. Cindric  
Dr. Jamile T. Lawand & Mr. Barry  
J. Carr

## Special Gifts

*Purchased a gift of an FIA  
Membership*  
Mr. & Mrs. John Giacchina for  
Conrad & Katrina Bontrager  
Mr. Michael Martin & Mr. Bryan  
Paris for Alice Martin  
Mr. Michael Sprague & Dr. Janet  
Sprague for Mary Sprague

*To benefit the General Operating  
Fund for 2010–2011*  
Charles Stewart Mott Foundation

*To benefit the Education  
Department*  
Ms. Rebecca Gale-Gonzalez  
Mr. Marshall Shaink

*To benefit the FIA's Library  
Collection*  
Ms. Susan Steiner Bolhouse  
Judith M. & Robert J. Irwin, II  
Ms. Sue Lyn Pickens  
Mr. & Mrs. Eino Rajala  
Mr. & Mrs. Charles R. Weeks

*To benefit the FIA's Library Fund  
Founders Society*

*To benefit the Special Needs  
Services for FIA Art Classes*  
Samuel E. and Patricia A. Morello  
Family Fund of the Community  
Foundation of Greater Flint

*Sponsors of Unbroken Ties:  
Dialogues in Cuban Art  
exhibition*  
Community Foundation of  
Greater Flint through grants  
advised by: Mary Ann Tremaine  
Endowment Fund and Peter  
D. & Nancy P. Kleinpell Family  
Fund

*Sponsors of Carnival Cubano  
2010*  
Financial Plus Federal Credit  
Union  
HealthPlus of Michigan  
Hurley Medical Center  
Kettering University  
Landaal Packaging Systems  
Mott Community College  
Ms. Hilda Quijano  
Ruth Mott Foundation  
Security Credit Union  
Chuck & Kathryn Sharbaugh  
Ms. Bertha Stephens

*Sponsors of Art on Tap 2010*  
Al Serra Automotive  
Applebee's  
Applegate Chevrolet  
Arby's  
Bob & Cindy Boib  
Calvin & Company, Inc.  
Diplomat Specialty Pharmacy  
Don Franco Hair Company  
Dortch Enterprises, LLC  
Elga Credit Union  
Fenton Home Furnishings  
Genesee Valley Rotary Club  
Genesys Health Systems  
Greg Johnston  
R.J. Kelly, III  
Landaal Packaging Systems  
Law Office of James C. Dillard  
Little Joe's  
Dr. John R. Love  
Luigi's Restaurant  
Merrill Lynch  
Drs. Bobby & Nita Mukkamala  
Jeremy Piper, Attorney at Law  
Elisabeth, Mark & Ghassan Saab  
Smith-Peabody Stiles Insurance  
Agency  
The Torch Bar & Grill  
The Townsend Morgan Group  
at UBS  
Whigville Market & Party Store  
William E. Walter, Inc.

*General donation for  
Art on Tap 2010*  
Fenton Home Furnishings, Inc.

*To Benefit Children in the Art  
School*  
Mrs. Doris Sutton

*Sponsors of College Town Lego  
Sculpture Competition*  
Soroc Plastics  
Artistic Decorating  
ATI Group  
Baker College  
Kettering University  
Mott Community College  
The Sherwin-Williams Company  
Yeo & Yeo, P.C., CPA

*To benefit the FOMA Film Series*  
Mrs. Melody Nye

*To benefit the Permanent  
Collection*  
Ms. Edith J. Qualman

*Sponsor of Wine Tasting 2010*  
Sharp Funeral Homes

## Film Society Members 10–11

Mr. & Mrs. Kenneth G. Aurand  
Ms. Susan Steiner Bolhouse  
Mrs. Edmund Brownell  
Mr. & Mrs. Tom E. Butts  
Ms. Monique Desormeau  
Mr. & Mrs. James D. Draper  
Mr. & Mrs. Eugene B. Griffel  
Mrs. Diana Harsch  
Mr. James Horton  
Mr. & Mrs. Arthur Hurand  
Ms. Judy Johnson  
Mr. & Mrs. Tom King  
Mr. & Mrs. Lee LaVictoire  
Ms. Carol Masse  
Mr. & Mrs. Sean McCormick  
Dr. & Mrs. Alan L. Morgan  
Mr. Andrew Morton  
Mr. & Mrs. James Nicolai  
Mr. & Mrs. Bill Ogden  
Mr. John Pendell  
Ms. Crystal Pepperdine  
Mr. Frank Phillips  
Mr. Michael J. Smith  
Ms. Shelley R. Spivack

## Sponsors of Film Society 10–11

*Screenwriter*  
(\$2,500)  
Guardian Alarm Company of  
Michigan

*Leading Actor/Actress*  
(\$1,000)  
Mr. Carroll G. Baker & Ms.  
Kimberly Roberson  
Mr. & Mrs. Donald F. Dahlstrom  
Ms. Linda L. Pylypiw

## Additional Print Society 2010–11

Mr. & Mrs. Earl Bell  
Mr. & Mrs. Joe Blakely  
Mr. & Mrs. F. James Cummins  
Mr. Jason Dake  
Mr. & Mrs. Thomas French  
Lauren & Janet Friesen  
Jeanne & Ralph Graham

Mr. & Mrs. John B. Henry, III  
Ms. Valorie Horton  
Mr. & Mrs. Gary J. Hurand  
Mr. Josh Hurand  
Ms. Lynne Hurand  
Sara Hurand & Elie Weiss  
Ms. Heather Jackson  
Mr. Miles Lam  
Dr. Scott Langenburg  
Ms. Alice Martin  
Mr. Michael Martin & Mr. Bryan  
Paris  
Mr. & Mrs. Peter Ott  
Mr. & Mrs. Jeff Rolf  
Ms. Sherren Sandy & Family  
Ms. Courtney Simpson &  
Mr. Ryan Garza  
Mr. & Mrs. William R. Stolpin  
The Torch Bar & Grill  
Mr. & Mrs. Dean T. Yeotis

*Gift of a Print Society  
Membership*  
Mr. & Mrs. John B. Henry, III for  
Mr. & Mrs. Jeff Rolf  
Mr. & Mrs. Gary J. Hurand for  
Sara Hurand & Elie Weiss  
Mr. & Mrs. Gary J. Hurand for  
Josh Hurand  
Mr. Michael Martin & Mr. Bryan  
Paris for Alice Martin

*Gifts received*  
**7.13.10 – 9.10.10**



MUSEUM SHOP

## Ring in the Holidays!

The Museum Shop has rings to fit every finger on your list! From flashy, costume pieces to rings made with real stones and hand tooled by an artist, we have the perfect accessories for every single party that you are attending. Whether you celebrate the season with one of these fabulous rings or with some of our other show-stopping merchandise, the Museum Shop has plenty of items to help you ring in the holidays in style!

**FIA Members receive a 10% discount on Museum Shop purchases.**

Mon–Wed, Fri & Sat: 10a–5p\*  
Thu: 10a–9p, Sun: 1p–5p

\*The Museum Shop is open extended hours for select special events.

Take the guesswork out of shopping with a gift card from the FIA!



The **FIA Art School** offers fall, winter and summer sessions for ages 2.5 through adult. Drawing, painting, sculpture, ceramics, weaving, and photography are among the classes offered. Non-members may call to receive a class brochure at 810.237.7315.

**Benefits and privileges of FIA membership include** 10% discount in the Museum Shop and The Café; a 20% discount and early registration privileges on Art School classes, discounts on ticketed events, free admission to temporary exhibitions; membership in the Founders Society; Founders Art Sales & Rental privileges; invitations to opening receptions, lectures, and special events; FIA Members Magazine; recognition in the Members Magazine and Annual Report; and inclusion in two reciprocal membership programs for members at the \$100 level and above.

**Rubens Society Members** are individuals and corporations supporting FIA membership at the \$1,000 level and higher and are invited to three exclusive events each year.

*The Flint Institute of Arts is a non-profit, equal opportunity employer and provides programs and services without regard to race, color, religion, national origin, age, sex or handicap.*



*Operating support for the Flint Institute of Arts is provided in part by the Charles Stewart Mott Foundation.*



*FIA Exhibitions and Programs are made possible in part with the support of the Michigan Council for Arts and Cultural Affairs, a partner agency of the National Endowment for the Arts.*



*This magazine, made possible through a generous donation by the Founders Society, is published five times per year for mailing to FIA members, museums and libraries around the country.*

**Mailing Address**  
1120 E. Kearsley Street  
Flint, MI 48503-1915

**Telephone**  
810.234.1695

**Fax**  
810.234.1692

**Website**  
www.flintarts.org

**Office Hours**  
Mon–Fri, 9a–5p

**Gallery Hours**  
Mon–Wed & Fri, 12p–5p  
Thu, 12p–9p  
Sat, 10a–5p  
Sun, 1p–5p  
*Closed on major holidays*

**Theater Hours**  
Fri & Sat, 7:30p  
Sun, 2p

**Museum Shop**  
810.234.1695  
Mon–Wed, Fri & Sat, 10a–5p  
Thu, 10a–9p  
Sun, 1p–5p

**The Café**  
810.234.1695  
Mon–Wed & Fri, 9a–5p  
Thu, 9a–9p  
Sat, 10a–5p  
Sun, 1p–5p

*The Museum Shop and The Café are open extended hours for select special events.*

**Founders Art Sales & Rental Gallery**  
810.237.7321  
Tue–Fri, 10a–5p  
Sat, 11a–3p  
Sun, 1p–5p  
*or by appointment*

### Admission to Temporary Exhibitions

FIA members .....	FREE
Adults .....	\$7.00
12 & under .....	FREE
Students w/ ID .....	\$5.00
Senior citizens 62+ .....	\$5.00

**TARGET FREE SATURDAYS**



## FLINT INSTITUTE OF ARTS

1120 E. Kearsley St.  
Flint, MI 48503

Non-Profit Org.  
U.S. Postage

**PAID**

Flint, MI  
Permit 140

---

# the café



**Members always receive a  
10% discount at The Café.**

## New Baked Goods

The Café at the Flint Institute of Arts is happy to announce a delicious partnership with *Big Apple Bagels*® and *My Favorite Muffin*®. Established in 1993, *Big Apple Bagels* and *My Favorite Muffin* have grown from humble beginnings to nation-wide phenomena because millions of people cannot get enough of their baked-fresh-daily treats. Now you can taste a variety of their fantastic bagel and muffin flavors right here at the FIA. Come in and see which one is your favorite!

*We Proudly Brew*  
STARBUCKS COFFEE



### Hours

Mon–Wed & Fri	9a–5p*
Thursday	9a–9p*
Saturday	10a–5p*
Sunday	1p–5p

\* *The Café is open extended hours  
for select special events.*