



Torn Paper

Directions

Watch the video at flintarts.education/virtual

Materials

Construction paper
Glue stick



1. Choose one piece of paper to be your background.



2. Using your hands, tear your paper into a variety of interesting shapes.



3. Glue your largest pieces of paper down first.



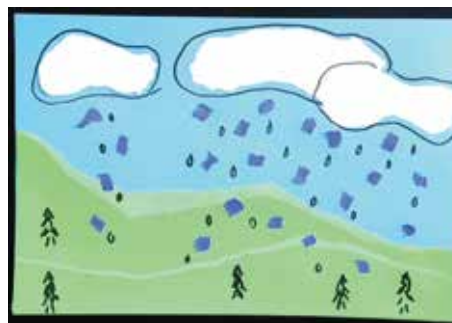
4. Tear and glue your medium sized pieces of paper next.



5. Glue your smallest pieces of paper down last.



6. If you like, you can use a marker or crayon to add details to your artwork.



7. Hang your artwork somewhere in the house for everyone to see!

PreK-12 Program Partners

Joy Allaun Trust
Arthur G. Bishop Charitable Trust
Community Foundation of Greater Flint
The Hearst Foundations
Dr. Alan Klein

Stella & Frederick Loeb Charitable Trust
Charles Stewart Mott Foundation
The Ruth Mott Foundation
The Nartel Foundation
Windgate Foundation

