



FLINT INSTITUTE OF ARTS

Annual Report 2006–2007





This report was made possible  
through the generosity of Sorensen  
Gross Construction Services and printed  
with the support of Riegle Press.



**Sorensen Gross  
Construction Services**

*success through partnership*



## Mission

To advance the understanding and appreciation of art for all through collections, exhibitions and educational programs.



## FLINT INSTITUTE OF ARTS

1120 East Kearsley Street  
Flint, Michigan 48503  
810.234.1695 phone  
810.234.1692 fax  
[www.flintarts.org](http://www.flintarts.org)

## About the Flint Institute of Arts

Incorporated in 1928, the FIA is a privately supported, non-profit organization. It is one of Michigan's most significant cultural and educational resources, serving people of all ages and interests.

The Institute is supported entirely through memberships, contributions from individuals and businesses, state funding, by earned income from endowments, and gifts from trusts and foundations.

The Institute's collections and temporary exhibitions are open daily (except Mondays and national holidays). Donations are appreciated. Art classes for adults and children, lectures, films, concerts, tours and special events are also offered as an integral part of the Institute's educational mission.

The Flint Institute of Arts is an Equal Opportunity Employer and provides programs and services without regard to race, color, religion, national origin, age, sex or handicap.

The Flint Institute of Arts is tax-exempt under Section 501 (c) (3).

## Contents

From the President	2
From the Director	4-5
Exhibitions	6-9
Acquisitions	10-13
Loans from the Permanent Collection	14-15
FIA Theater Films	16-17
Education	18-19
Income Sources	20
Supporting Groups	21
Special Events	22-23
Renovation	24-25
Endowment Campaign	26-27
Contributions	28-29
Membership	30-41
Financial Statement	42-45
Board, Auxiliary Groups, Faculty & Staff	46-47

Fiscal Year ended June 30, 2007



It has been a great honor for me to serve as President of the Board of Trustees of the Flint Institute of Arts again this past year. I have a deep and abiding respect for the membership, volunteers, staff, and my fellow trustees. I also feel the mission "to advance the understanding and appreciation of art for all through collections, exhibitions, and educational programs" we adopted together in 2005, in preparation for a new era of expanded operations, has been an effective guiding light.

Over the past two years, the FIA's Board and committees have recommended numerous art acquisitions, prepared budgets, proposed interesting exhibitions, planned fund raising events, created an Advisory Council, participated on Cultural Center committees, and created an Art School Coordinator position (separate from the Education Department), to name just a few.

Our Director, John Henry, continues to lead us in a strategic direction that included two reopenings after two major renovations and expansions of the facility. As fiscal year 2007–2008 approaches, the Flint Institute of Arts is poised to make even greater contributions to the community.

It has been my great pleasure to observe a staff of high quality museum professionals who, on a daily basis, work toward fulfilling our mission. The FIA is fortunate to have such a group of hardworking individuals who care so much for the well-being of the Institute.

The FIA is also fortunate to have such a varied group of volunteers, who serve on the Board of Trustees and lead the Museum and Art School through policy making and oversight; who also serve as committee chairs, and officers, who give and care so much for the Institute's well-being.

The FIA is deeply indebted to the volunteer efforts of so many who serve also on the Founders Society, Friends of Modern Art, and our docents. These three groups are absolutely invaluable to the FIA.

The future challenges for the FIA are very clear; increasing audience, broadening philanthropic support, and fulfilling our mission. We have the quality of staff, the community's talent, and now the facility to be an important presence in the region.

A handwritten signature in black ink, appearing to read "Michael J. Behm". The signature is fluid and stylized, with a long horizontal line extending from the end.

**Michael J. Behm**

President





It seemed nothing could top the new building we opened in the fall of 2005, that is, until September 30, 2006 when the ribbon was cut and guests poured into the new Charles Stewart Mott Gallery Wing to see the permanent collections installed in the new Johnson Galleries, Dow Gallery and contemporary galleries. The Phase II addition of 17,000 square feet has had a tremendous impact on programming and collection use. The new storage facility is a larger and safer home for the FIA's ever expanding collection and the spacious, airy galleries now house the 19th and 20th century painting and sculpture collection making room for the full-time installation of our study collections of arts of the Americas, Africa, and Asia. The expansion also added 2,000 square feet to the temporary gallery space allowing us to provide a deeper experience for our visitors with larger exhibitions.

The construction project was a tremendous challenge to the staff, volunteers, patrons, and sponsors most of whom had given so much already during Phase I. I'd like to thank everyone who worked so hard to complete the project on time and on budget. As the name of the new wing implies, the expansion would not have happened if not for the vision and financial commitment of the Board of the Charles Stewart Mott Foundation and its chair, Mr. Bill White. The Foundation has done so much for the FIA and the FIA is most fortunate and very grateful to receive their support once again for this project.

By expanding the capacity of the building, the FIA has new opportunities to meet its many goals and objectives and, as

this report describes in detail, in addition to opening the new building this past year, the FIA has experienced many other changes and achieved many new successes.

The Exhibitions and Collections Department mounted four large exhibitions in the temporary galleries (now 66% larger than before). The Department organized collaborations with other organizations in the city creating programs related to the exhibitions: *Excavating Egypt* and *After Lewis and Clark*. The Film and Video Division presented the work of 9 video artists in the Fleckenstein Video Gallery and collaborated on the *Hip Hop Film Festival*, *Hispanic Heritage Month Cinefestival*, and the *Jewish Film Festival* in addition to working with the Friends of Modern Art, who assisted in providing year-round film screenings.

This year, the permanent collection grew through gifts and purchases by 71 works of art including the spectacular 88 foot long fresco mural by Flint native, Hubert Massey, 150 books were added to the library's collection and the department conserved 10 major paintings that, until now, were unsuitable for exhibition. Research continued on the collection and exhibitions: exploring Nazi Era Provenance; updating files with new information and digital photography; creating audio recordings in the newly equipped recording studio in the FIA Theater; publishing a catalog for the exhibition, *Thy Brothers' Keeper*, and an article in *American Art Review* on the exhibition, *Artists of the Great Lakes*. Again this year, the FIA agreed to lend works from its outstanding collection to



museums in Columbus, Ohio; Duluth, Minnesota; Yonkers, New York; New York City; Amsterdam; and Florence.

The Education Department increased enrollment in the school over the previous year and the Board of Trustees voted to create a separate Art School Department to oversee the larger facility and expanded program. The department increased participation in museum programs among adults and college students and among educators in education workshops.

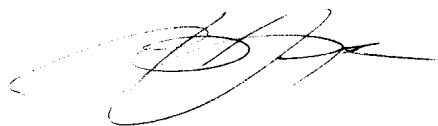
Attendance at the *Art à la Carte* video series went up. The Docent program expanded with 9 new docents signing up for training. The department engaged in collaborations with local organizations including Mott Community College; University of Michigan-Flint; the Flint Public Library; the Flint Public Schools; Sloan Museum; and Longway Planetarium.

The expanded building, increased programming and larger audiences led to bigger budgets and, of course, the need for more income. The Development Department redoubled its efforts in marketing, fund raising, and membership and raised \$100,000 for general operating over the previous year. As the public's awareness of the new FIA grew, so did their interest in renting the facility, resulting in 39 groups hosting events, the creation of a new rental policy, and a 75% increase in rental income.

As always, the FIA is deeply indebted to the Friends of Modern Art and the Founders Society for their efforts to raise funds in support of FIA programs. Once again, their hard work and

creative planning generated funds for operations, exhibitions and collections. The Friends of Modern Art organized one of the best art fairs in years and provided an exceptional film series in the new Theater. The Founders Society raised funds through their new Art Sales and Rental Gallery, featuring outstanding Michigan artists, a travel program, and other special fund raising events. I am deeply grateful to all for their efforts and contributions.

Lastly, I would like to thank the FIA members for your generous support. Thanks to you, the FIA is an inspiring art experience for all who visit.



**John B. Henry, III**

Director



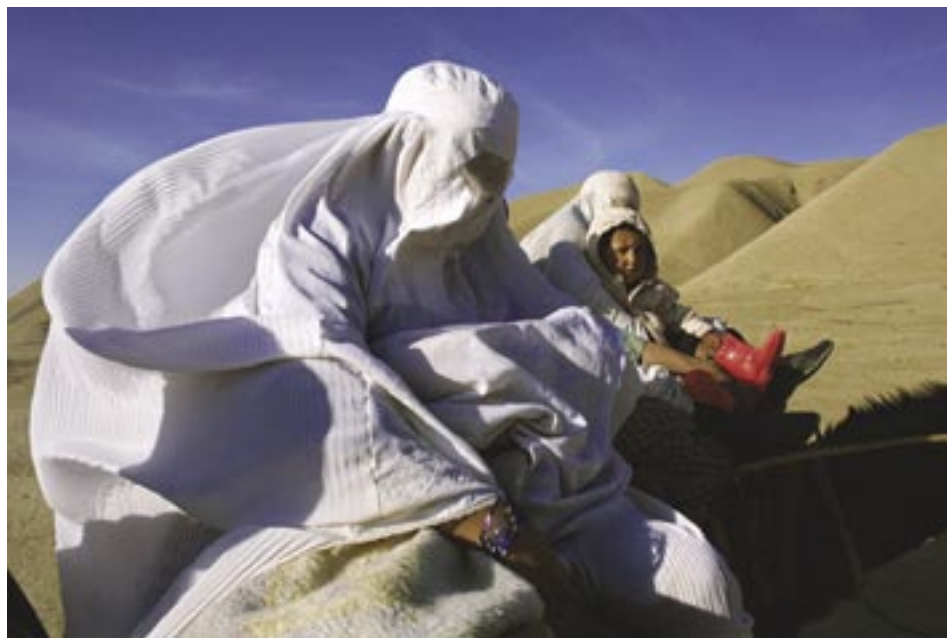
The Flint Institute of Arts strives to provide excellent and innovative exhibitions that inspire, enlighten and educate our visitors. As a primary operating program of the FIA, exhibitions and their related activities constitute a significant portion of the financial, human and physical resources of the museum. The FIA presents changing exhibitions to enhance the visitor's understanding of the thematic, aesthetic, and historical content of a work of art. As one of the FIA's most visible programming activities, exhibitions promote greater audience visitation, which increases awareness of the museum's permanent collection and other FIA programs. Because the FIA is the only institution of its kind in Flint, Genesee County, and the region north of the Detroit metropolitan area, it is important that exhibition programming explore a wide range of artistic concepts and diverse cultures. To this end, the Curatorial Department organizes exhibitions drawn from the FIA's extensive collection of over 7,000 paintings, sculptures, works on paper and decorative arts, and borrows shows from other museums and exhibition organizing entities. In FY 2007, gallery attendance totalled 69,801.

## ***Thy Brothers' Keeper***

**4/22/06 – 7/30/06**

*Sponsored by Charles Stewart Mott Foundation*

Organized by The Alternative Museum in New York City and the Flint Institute of Arts, this exhibition was comprised of 150 photographs chronicling complex multi-dimensional issues related to civil and human rights, such as political freedom, issues of race, ethnicity, class, religion, sexual orientation, the environment, technology, youth at risk, and freedom of the press.



Alexander Boulat  
French, b. 1962  
*Untitled*  
inkjet print on archival paper, 2001  
13 x 19 inches  
Courtesy of the artist



**Excavating Egypt:  
Great Discoveries from  
the Petrie Museum of  
Egyptian Archaeology,  
University College  
London**

**9/30/06 – 1/7/07**

Sponsored by American Arab Heritage Council, Community Foundation of Greater Flint, Loeb Charitable Trust Administered by Citizens Bank Wealth Management, N.A., and Mary Louise and John Sarvis Donor Advised Fund of the Community Foundation of Greater Flint

This exhibition was organized by the Michael C. Carlos Museum of Emory University in cooperation with the Petrie Museum of Egyptian Archaeology, University College London, with generous support provided by the Massey Charitable Trust. It told the story of archaeologist William Matthew Petrie (1853–1942) and his exploration of ancient Egyptian civilization. Considered the “father of Egyptian archaeology,” Petrie worked in Egypt for about 50 years, and served as the inspiration for the film hero Indiana Jones. *Excavating Egypt* featured over 200 of Petrie’s most significant finds, which together told the story of the earliest people in Egypt.

Bead-net Dress  
Egyptian, Dynasty 5, 2494–2345 BC  
faience with modern string  
37 1/2 x 9 3/4 inches  
© Petrie Museum of Egyptian  
Archaeology, University College  
London, Photo by Mary Hinkley



**Rembrandt: The  
Consummate Etcher  
and Other 17th Century  
Printmakers**

**9/30/06 – 11/5/06**

Sponsored by JPMorgan Chase

Rembrandt is generally considered one of the most important figures in western art history, in part, because of his virtuoso style and the wide range of subjects he presented in his prolific output. And while it is his paintings that garner the most public attention, his etchings demonstrate the same genius, subject diversity, and vitality that he generated with a brush. This exhibition brought together the printed work of Rembrandt and sixteen of his contemporaries. The 40 prints were arranged into the thematic groups of landscape, genre, portraiture, and religious subjects so that visitors could discover the similarities and differences, as well as the technical achievements of these talented individuals. This exhibition was organized by the Syracuse University Art Collection.



Rembrandt Harmensz van Rijn  
Dutch, 1606–1669  
*Self Portrait Drawing at a Window*  
etching, drypoint, and engraving on  
laid paper, 1648  
6 1/4 x 5 inches  
Courtesy of the Syracuse University  
Art Collection,  
Gift of Mr. Cloud Wampler,  
1963.1053

**America at Work:  
Labor Scenes from the  
Collection of the FIA**

**11/25/06 – 1/21/07**

Sponsored by JPMorgan Chase

This special exhibition presented 30 paintings and works on paper from the collection of the FIA by American artists dealing with the subjects of work and industry. Inspired by factory production, heavy industry and significant engineering projects in the first half of the 20th century, these scenes of people at work and industry symbolize America's leadership in modern technology, the virtues of democracy and capitalism, and the stabilizing force inherent in the middle-class lifestyle.



Harry Gottlieb  
American, b. Romania 1895–1992  
*The Strike is Won*  
silkscreen on paper, 1940  
17 7/8 x 22 15/16 inches  
Collection of the Flint Institute of Arts,  
Gift of Jack B. Pierson in memory of  
Robert Martin Purcell, 1981.98

**David Driskell: Painting  
Across the Decade  
1996–2006**

**1/27/07 – 3/25/07**

*Sponsored by JPMorgan Chase*

This exhibition featured art by renowned scholar, curator, and artist David Driskell. Drawing inspiration from nature and African art, Driskell's work is semi-abstract, energetic, and richly colored. The exhibition featured gouaches, collages, and mixed media created during the last ten years. Driskell is one of the world's leading authorities on African American art. He has contributed significantly to the understanding of African American art history through numerous books and exhibition catalogues as well as articles and essays for major publications throughout the world.



David Driskell  
American, b. 1931  
*She Wore a Serpent Around Her Neck*  
collage and encaustic on paper,  
1999–2005  
8 x 6 1/2 inches  
Courtesy of DC Moore Gallery,  
New York

**After Lewis and Clark:  
The Forces of Change,  
1806–1871**

**2/10/07 – 4/29/07**

*Sponsored by Founders Society,  
Friends of Modern Art, Loeb  
Charitable Trust Administered by  
Citizens Bank Wealth Management,  
N.A., and Michigan Council for Arts  
and Cultural Affairs*

This exhibition featured 115 paintings, drawings and prints from the collection of the Gilcrease Museum in Tulsa, Oklahoma, by artists who accompanied explorers, including Meriwether Lewis and William Clark, as they encountered the unexpected and unique subjects of the American West. The works, done between 1806 and 1871, by artists such as George Catlin, Karl Bodmer, Albert Bierstadt, and Thomas Moran, help to deepen our understanding of the West and its history.

*After Lewis and Clark: The Forces of Change, 1806–1871 was organized by the Gilcrease Museum, Tulsa, Oklahoma. This exhibition was made possible by the following major sponsors: The Ralph and Frances McGill Foundation, The Trust Company of Oklahoma, and The Harold C. Stuart Foundation.*

Alfred Jacob Miller  
American, 1810–1874  
*Fort Laramie*  
oil on canvas, 1851  
18 x 27 inches  
Image courtesy of Gilcrease Museum,  
Tulsa, Oklahoma



**Oscar Bluemner:  
Drawings**

**3/31/07 – 5/27/07**

*Sponsored by JPMorgan Chase*

German born artist, Oscar Bluemner, was trained in architecture in Berlin before immigrating to the United States in 1892. While known for his use of bold color, which produced a highly emotive quality in his work, a strong sense of his architectural training can also be seen in the rectilinear quality of his paintings and drawings. Bluemner created many landscapes, both urban and isolated, whose large planes of color and strong shapes project Expressionist and Fauvist qualities. The FIA was pleased to present this exhibition of 30 works on paper on loan from Jerald Melberg.



Oscar Bluemner  
American, b. Germany, 1867–1938  
*Bloomfield*  
charcoal on paper, n.d.  
17 1/4 x 23 3/4 inches  
Courtesy of Jerald Melberg Gallery,  
Charlotte, North Carolina

## Artists of the Great Lakes: 1910–1960

5/26/07 – 8/19/07

Sponsored by Citizens Bank

The Flint Institute of Arts has long held an outstanding collection of works of art by artists of the Midwest, especially from the first half of the twentieth century. In the past decade, the collection has expanded in breadth and depth to include hundreds of examples from the most significant artists of the region. This exhibition featured 90 paintings primarily created between 1910 and 1960, which presented the subjects, styles, and individual statements of the artists of the Midwest.

Tunis Ponsen  
American, b. Holland, 1891–1968  
*The Old Pier*  
oil on canvas, n.d.  
26 1/4 x 30 1/4 inches  
Collection of the Flint Institute  
of Arts, purchase by popular  
subscription, 1929.1



## Recent Acquisitions of Works on Paper to the Flint Institute of Arts

6/2/07 – 9/2/07

Sponsored by JPMorgan Chase

The Flint Institute of Arts relies on gifts of artworks to form much of the permanent collection. During the past few years of planning and renovation, the FIA received 160 works on paper, from which this exhibition was created including works by Held, Lichtenstein, Rosenquist, Oldenburg, Rivers, Ruscha, and Soyer.



James Rosenquist  
American, b. 1933  
*After Berlin V*  
color lithograph on paper, 1998  
32 3/4 x 37 1/8 inches  
Gift of Dr. Robert and Deanna Harris  
Burger, 2006.20



# Acquisitions to the Permanent Collection

The permanent collection is a resource for creating exhibitions and developing other programs that help interpret the beauty and meaning of art. The FIA's extensive permanent collection also provides opportunities for educational programs for students and scholars, as well as a diverse public.

The growth of the collection is supported by gifts from civic-minded individuals who donate funds and works of art to the permanent collection. In addition, the Curatorial Department and the Collections Committee work together to identify strategies and seek new funds for the acquisition of artworks that meet museum objectives and the expectations of an ever inquisitive and knowledgeable public. The staff conducts work essential to the care and management of the collection, including research, documentation, preservation, presentation and interpretation of the collection.



## Henri Matisse

French, 1869–1954

### *Petite Odalisque Draperie Verte*

oil on canvas, 1921

9 1/2 x 15 1/4 inches

Gift of Mrs. William B. Heaton,  
daughter of Mr. and Mrs.  
Donald E. Johnson, Sr.,  
2006.62

## Gerald Heffernon

American, 20th century

### *Four-eyed Sighthound*

excelsior, wire, wood, fake fur  
and pigments, 1986

21 x 48 x 20 inches

Gift of Claire White, 2006.63

## Truman Marquez

American, b. 1962

### *Immpadronirsi Immortaliata*

acrylic on canvas, 1999

126 x 102 inches

Gift of Truman Marquez,  
2006.64

## James Perry Walker

American, b. 1945

### *Twins*

gelatin silver print, 2006

60 x 44 inches

Gift of James Perry Walker,  
2006.65

## James Perry Walker

American, b. 1945

### *Three Children on Road Near Rossville, TN*

gelatin silver print, 2006

44 x 60 inches

Gift of James Perry Walker,  
2006.66

## James Perry Walker

American, b. 1945

### *Mount Vernon Church, Rossville, TN*

gelatin silver print, 2006

60 x 44 inches

Gift of James Perry Walker,  
2006.67

## James Perry Walker

American, b. 1945

### *Gatewood Baptizing #2*

gelatin silver print, 2006

44 x 60 inches

Gift of James Perry Walker,  
2006.68

## James Perry Walker

American, b. 1945

### *Young Man in Pew, Mount Vernon Church, Rossville, TN*

gelatin silver print, 2006

60 x 44 inches

Gift of James Perry Walker,  
2006.69

**James Perry Walker**

American, b. 1945  
**Slayden, Mississippi**  
 gelatin silver print, 2006  
 44 x 60 inches  
 Gift of James Perry Walker,  
 2006.70

**James Perry Walker**

American, b. 1945  
**Oxford, Mississippi**  
 gelatin silver print, 2006  
 44 x 53 inches  
 Gift of James Perry Walker,  
 2006.71

**James Perry Walker**

American, b. 1945  
**Three People**  
 gelatin silver print, 2006  
 39 x 44 inches  
 Gift of James Perry Walker,  
 2006.72

**James Perry Walker**

American, b. 1945  
**White Barn**  
 gelatin silver print, 2006  
 31 x 44 inches  
 Gift of James Perry Walker,  
 2006.73

**James Perry Walker**

American, b. 1945  
**Profiles of Father and Son**  
 gelatin silver print, 2006  
 31 x 44 inches  
 Gift of James Perry Walker,  
 2006.74

**James Perry Walker**

American, b. 1945  
**Mount Vernon Church,  
 Rossville, TN**  
 gelatin silver print, 2006  
 44 x 31 inches  
 Gift of James Perry Walker,  
 2006.75

**James Perry Walker**

American, b. 1945  
**Two Boys in Chicken Coop**  
 gelatin silver print, 2006  
 31 x 44 inches  
 Gift of James Perry Walker,  
 2006.76

**Lydia Ely**

American, 1833–1914  
**Untitled**  
 watercolor on paper, n.d.  
 10 1/2 x 14 1/2 inches  
 Gift of Ruthella G. Potter,  
 2006.77

**Arthur Dawson**

American, 1857–1922  
**Untitled**  
 watercolor on paper, n.d.  
 13 x 20 inches  
 Gift of Robert Bricker Estate,  
 2006.78

**John Henry**

American, b. 1943  
**Spirit of Miami**  
 painted aluminum, 1976  
 64 x 56 inches  
 Gift of Pat Glascock and  
 Michael Hall, 2006.79

**Joseph Konopka**

American, b. 1932  
**Exhibit**  
 acrylic on canvas, 1972  
 50 x 60 inches  
 Gift of Joseph Konopka,  
 2006.80

**Jacek Kolasinski**

American, b. Poland, 1970  
**Civitas**  
 balsa wood models and DVD  
 projection, 2004  
 variable dimensions  
 Museum purchase, 2006.81

**Bill Durham**

American, b. 1937  
**Liquid Gold**  
 Acrylic on canvas, 1985  
 96 x 72 inches  
 Gift of Theodore and Saniya  
 Hamady, 2006.82

**Hedda Sterne**

American, b. 1916  
**Elegy**  
 oil crayon on canvas, 1970  
 48 x 160 inches  
 Gift of the artist, 2006.83

**Unknown**

Guatemalan, Maya  
**Large Covered Jar**  
 ceramic, 800 AD  
 7 1/2 x 4 1/2 inches  
 Gift of Robert Drapkin,  
 2006.84

**Unknown**

Guatemalan, Maya  
**Circular Covered Jar**  
 ceramic, 800 AD  
 6 x 2 3/4 inches  
 Gift of Robert Drapkin,  
 2006.85

**Unknown**

Guatemalan, Maya  
**Seated Ruler**  
 stone, 600–300 BC  
 7 x 6 inches  
 Gift of Robert Drapkin,  
 2006.86

**Unknown**

Peruvian, Inca  
**Vessel**  
 ceramic, 1400–1500 AD  
 7 x 7 1/2 inches  
 Gift of Robert Drapkin,  
 2006.87

**Unknown**

Peruvian, Lambayeque  
**Vessel**  
 ceramic, 700–900 AD  
 6 1/2 x 4 1/2 inches  
 Gift of Robert Drapkin, 2006.88

**Unknown**

Mexican, Veracruz  
**Heart Bowl**  
 ceramic, 600–900 AD  
 7 1/2 x 12 1/2 inches  
 Gift of Robert Drapkin, 2006.89

**Unknown**

Guatemalan, Maya  
**Tall Neck Vessel**  
 ceramic, 300–100 BC  
 11 x 6 inches  
 Gift of Robert Drapkin, 2006.90

**Unknown**

Guatemalan, Maya  
**Polychrome Cylinder Vessel**  
 ceramic, 700–900 AD  
 6 x 3 1/2 inches  
 Gift of Robert Drapkin, 2006.91



**Unknown**

Guatemalan, Maya  
**Incised Vessel**  
 ceramic, 300–100 BC  
 6 x 5 inches  
 Gift of Robert Drapkin, 2006.92

**Unknown**

Mexican, Nayarit  
**Seated Female**  
 ceramic, 100 BC – 250 AD  
 20 x 10 inches  
 Gift of Robert Drapkin, 2006.93

**Unknown**

Mexican, Ameca  
**Female Seated Figures (pair)**  
 ceramic, 100 BC – 250 AD  
 14 1/2 x 8 inches  
 Gift of Robert Drapkin,  
 2006.94.1

**Unknown**

Mexican, Ameca  
**Female Seated Figures (pair)**  
 ceramic, 100 BC – 250 AD  
 14 1/2 x 8 inches  
 Gift of Robert Drapkin,  
 2006.94.2

**Unknown**

Peruvian, Lambayeque  
**Vessel**  
 ceramic, 700–900 AD  
 8 x 4 1/2 inches  
 Gift of Robert Drapkin, 2006.95

**Unknown**

Guatemalan, Maya  
**Parrot and Snake Covered Jar**  
 ceramic, 1200 AD  
 12 x 7 inches  
 Gift of Robert Drapkin, 2006.96



**Unknown**

Peruvian, Nazca  
**Globular Double Spout Vessel**  
 ceramic, 400–600 AD  
 7 3/4 x 4 3/4 inches  
 Gift of Robert Drapkin, 2006.97

**Unknown**

Peruvian, Nazca  
**Globular Rectangular House Vessel**  
 ceramic, 400–600 AD  
 7 3/4 x 4 3/4 inches  
 Gift of Robert Drapkin, 2006.98

**Unknown**

Guatemalan, Maya  
**Figural Whistle**  
 ceramic, 600–900 AD  
 4 3/4 x 4 inches  
 Gift of Robert Drapkin, 2006.99

**Unknown**

Guatemalan, Maya  
**Figural Whistle**  
 ceramic, 600–900 AD  
 4 3/4 x 4 inches  
 Gift of Robert Drapkin,  
 2006.100

**Unknown**

Guatemalan, Maya  
**Figural Whistle**  
 ceramic, 600–900 AD  
 4 3/4 x 4 inches  
 Gift of Robert Drapkin,  
 2006.101

**Unknown**

Guatemalan, Maya  
**Figural Whistle**  
 ceramic, 600–900 AD  
 4 3/4 x 4 inches  
 Gift of Robert Drapkin,  
 2006.102

**Unknown**

Mexican  
**Seated Figure**  
 ceramic, n.d.  
 8 x 6 inches  
 Gift of Robert Drapkin,  
 2006.103

**Unknown**

Guatemalan, Maya  
**Tall Neck Vessel with Mythical Animal**  
 ceramic, 1800 BC – 250 AD  
 6 1/2 x 6 inches  
 Gift of Robert Drapkin,  
 2006.104

**Unknown**

Guatemalan, Maya  
**Monkey Vessel**  
 ceramic, 1800 BC – 250 AD  
 5 1/2 x 10 1/2 inches  
 Gift of Robert Drapkin,  
 2006.105

**Unknown**

Guatemalan, Maya  
**Monkey Vessel**  
 ceramic, 1800 BC – 250 AD  
 5 1/2 x 10 1/2 inches  
 Gift of Robert Drapkin,  
 2006.106

**Unknown**

West Mexico, Chupicuaro  
**Vessel with Human Head**  
 ceramic, 600 BC  
 3 1/4 x 6 inches  
 Gift of Robert Drapkin,  
 2006.107

**Unknown**

Mexico, Maya  
**Vessel**  
 ceramic, 900–1200 AD  
 5 1/2 x 7 inches  
 Gift of Robert Drapkin,  
 2006.108

**Unknown**

Mexico, Colima  
**Mask with Carved Shell Eyes**  
 ceramic and shell, ca. 300 AD  
 9 x 8 1/2 inches  
 Gift of Robert Drapkin,  
 2006.109

**Unknown**

Mexico, Olmec  
**Vessel**  
 ceramic, 600 BC – 300 BC  
 8 x 4 1/2 inches  
 Gift of Robert Drapkin,  
 2006.110

**Unknown**

Guatemalan, Maya  
**Jaguar Lidded Jar**  
 ceramic, 300 AD – 600 AD  
 10 1/2 x 4 1/2 inches  
 Gift of Robert Drapkin,  
 2006.111

**Unknown**

Guatemalan, Maya  
**Jaguar Lidded Jar**  
 ceramic, 300 AD – 600 AD  
 6 x 4 1/2 inches  
 Gift of Robert Drapkin,  
 2006.112

**Unknown**

Guatemalan, Maya  
**Jaguar Lidded Jar**  
 ceramic, 300 AD – 600 AD  
 6 x 4 1/2 inches  
 Gift of Robert Drapkin,  
 2006.113

**Unknown**

Guatemalan, Maya  
**Jaguar Lidded Jar**  
 ceramic, 300 AD – 600 AD  
 6 x 4 1/2 inches  
 Gift of Robert Drapkin,  
 2006.114



**Unknown**

West Mexico, Chupicuaro  
**Vessel with Human Head**  
 ceramic, 600 BC  
 3 1/4 x 6 inches  
 Gift of Robert Drapkin,  
 2006.115

**William Bailey**

American, b. 1930  
**Nude**  
 pencil on paper, 1968  
 15 x 11 1/4 inches  
 Gift of Mrs. Robert J.  
 Schoelkopf, 2006.116

**Martha Erlebacher**

American, b. 1937  
**Violets**  
 watercolor on paper, 1972  
 10 1/2 x 14 inches  
 Gift of Mrs. Robert J.  
 Schoelkopf, 2006.117

**Martha Erlebacher**

American, b. 1937  
**Standing Female Figure**  
 pencil on paper, 1983  
 17 x 14 inches  
 Gift of Mrs. Robert J.  
 Schoelkopf, 2006.118

**Sophie Matisse**

American, b. 1965  
**Guernica**  
 acrylic on canvas, 2003  
 8 1/2 x 19 3/8 feet  
 © Artist's Right Society (ARS),  
 New York  
 Museum purchase with funds  
 donated by Mr. William S.  
 White, 2006.119

**Joel Perlman**

American, b. 1943  
**Untitled**  
 steel, 1998  
 17 x 8 x 8 1/2 inches  
 Gift of Claudia DeMonte and  
 Ed McGowin, 2006.120

**Joseph Konopka**

American, b. 1932  
**Bra**  
 acrylic on canvas on cut-out  
 wood panel, 1981  
 15 x 14 1/2 inches  
 Gift of Joseph Konopka,  
 2006.121

**Unknown**

African, Congo  
**Kuba Cloth**  
 textile and pigment, n.d.  
 182 x 28 inches  
 Museum purchase, 2006.122

**Unknown**

African, Congo  
**Kuba Cloth**  
 textile and pigment, n.d.  
 162 1/2 x 37 1/2 inches  
 Museum purchase, 2006.123

**Unknown**

South African, Zulu  
**Brides Hat**  
 textile and pigment, n.d.  
 11 3/4 x 10 1/2 x 4 inches  
 Museum purchase, 2006.124

**Claudia DeMonte**

American, b. 1947  
**Female Implement Serving  
 Pieces**  
 bronze, 1995  
 variable  
 Museum purchase,  
 2006.125.1-15

**Joseph McDonnell**

American, b. 1936  
**School's Out**  
 painted aluminum, n.d.  
 96 x 108 x 114 inches  
 Museum purchase, 2006.126

**Stephen Magsig**

American  
**Crosby Street Shadows**  
 oil on canvas, 2004  
 30 x 24 inches  
 Museum purchase, 2006.127

**Bruce Piermarini**

American, b. 1953  
**Untitled**  
 acrylic on canvas, 1990  
 45 x 25 inches  
 Gift of June Bakalar, 2007.1

**Unknown**

American, 19th century  
**Mambrino Gift**  
 oil on canvas, 1874  
 21 3/8 x 27 3/4 inches  
 Donated by the family of  
 Katherine Kane, 2007.2

**Phil Braun**

American, b. Germany 1921  
**Untitled**  
 photograph on paper, 1990  
 23 7/8 x 23 7/8 inches  
 Gift of Phil Braun, 2007.3

**John Dempsey**

American, b. 1950  
**Landscape with Church/  
 Garden/Stream: for Sarah**  
 acrylic on canvas, 2003  
 72 x 117 inches  
 Museum purchase, 2007.4



An effective way to increase the Flint Institute of Arts' reputation as an important cultural institution is to lend works of art from the permanent collection to other museums. Lending art promotes collegial relationships between museums, scholarships, and provides national and international audiences exposure to works of art from the FIA's outstanding permanent collection.

During the fiscal year 2006–2007, the FIA made loans to the following:

## To the Exhibition

### ***The Dispassionate Body: Paintings and Drawings of Figures in Still Life by Philip Pearlstein***

Tweed Museum of Art  
Duluth, Minnesota  
3/23/06 – 10/15/06

### **Philip Pearlstein**

American, b. 1924

### ***Entrance to Lincoln Tunnel, Daytime***

oil on canvas, 1992  
72 x 72 inches  
Gift of Mrs. Cecil Boksenborn,  
by exchange, 1993.40



## To the Exhibition

### ***Neil Welliver's Chosen Terrain***

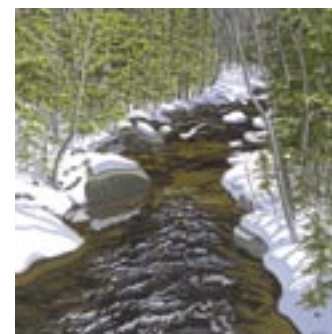
The Hudson River Museum  
Yonkers, New York  
9/30/06 – 1/7/07

### **Neil Welliver**

American, 1929–2005

### ***Cedar Water Brook***

oil on canvas, 1988  
72 x 72 inches  
Museum purchase in memory  
of Mr. and Mrs. Donald E.  
Johnson, 1989.72



## To the Exhibition

### **Cezanne e l'Impressionismo a Firenze nel Primo Novecento**

Firenze Mostre  
Florence, Italy  
3/2/07 – 7/29/07

### **John Singer Sargent**

American, b. Italy, 1856–1925  
**Garden Study of the Vickers  
Children**  
oil on canvas, 1884  
54 1/2 x 36 inches  
Gift of the Viola E. Bray  
Charitable Trust via Mr. & Mrs.  
William L. Richards, 1972.47



## To the Exhibition

### **Vincent Van Gogh and Expressionism**

Van Gogh Museum  
Amsterdam, Netherlands  
11/24/06 – 3/4/07  
The Neue Galerie, New York  
City, New York  
3/23/07 – 7/2/07

### **Alexei von Jawlensky**

Russian, 1864–1941  
**Portrait of Marie Castel**  
oil on board, 1906  
20 13/16 x 19 3/8 inches  
Gift of Mr. and Mrs. Jerome O.  
Eddy, 1940.8



## To the Exhibition

### **Currents: Evan Penny**

Columbus Museum of Art  
Columbus, Ohio  
5/11/07 – 9/2/07

### **Evan Penny**

Canada, b. South Africa, 1953  
**(Old) No One - In Particular  
#4, Series 2**  
silicone, pigment, hair, fabric,  
aluminum, 2005  
40 x 32 inches  
Museum purchase, 2005.18



## To the Exhibition

### **Salient Landscape**

Birmingham Bloomfield Art  
Association  
Birmingham, Michigan  
6/15/07 – 7/13/07

### **John Dempsey**

American, b. 1950  
**Landscape with Church/  
Garden/Stream: for Sarah**  
acrylic on canvas, 2003  
72 x 117 inches  
Museum purchase, 2007.4

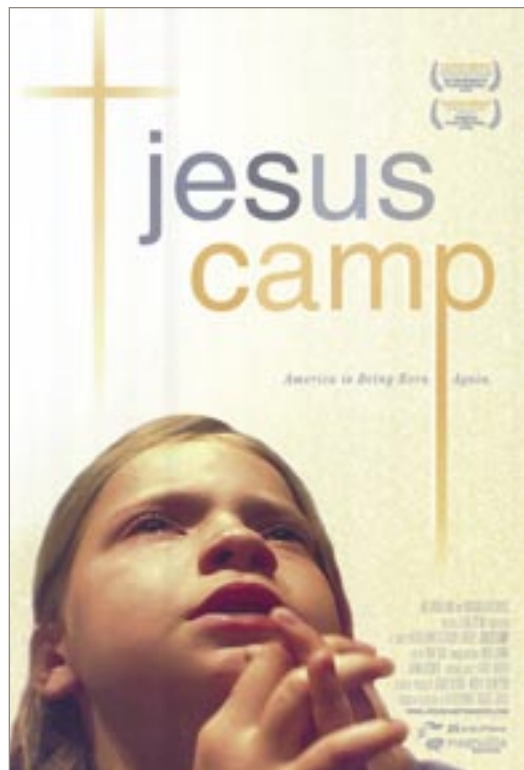




The Film Program is designed to offer films to the local community that will appeal to a broad and diverse audience. The program comprises a 50-week schedule of film series and festivals. In addition to weekly screenings on Fridays, Saturdays, and Sundays, special screenings are occasionally arranged. The Friends of Modern Art's (FOMA) fall and winter series presented 18 films. The FIA presented 30 films in the weeks remaining.

The Fleckenstein Video Gallery is a unique museum space dedicated to exhibiting outstanding works of art by video artists.

FIA Theater Films are sponsored by:  
 Ruth Mott Foundation  
 Friends of Modern Art (FOMA)  
 Michigan Public Media



## Film Program

In FY2007, the FIA Theater screened the following films:

### July

Look at Me  
 Take My Eyes  
 Water  
 Hip Hop Film Festival

### September

The Land  
 The Violin  
 Cairo Station

### October

Duck Season  
 Why Cybraceros?  
 La Historia de Jonas  
 Work in Progress  
 Mi Otro Yo  
 Border Brujo  
 Guantanamera  
 All Water Has a Perfect Memory  
 I Wonder What You Will  
 Remember of September  
 Home is Struggle  
 CORPUS: A Home Movie for Selena  
 78th Annual Academy Award Nominated Short Films  
 CSA: Confederate States of America

### November

Look Both Ways  
 The Heart of the Game  
 Jesus Camp  
 The Notorious Bettie Page

### December

The Road to Guantánamo  
 Old Joy  
 La Moustache  
 Only Human  
 Selections from the 34th Annual Dance on Camera Festival

### January

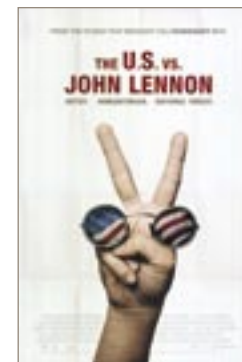
The Motel  
 Army of Shadows  
 The Science of Sleep  
 The Devil and Daniel Johnston

### February

The U.S. vs. John Lennon  
 Cry-Baby  
 Half Nelson  
 The Last King of Scotland  
 The Defiant Ones  
 A Raisin in the Sun  
 In the Heat of the Night  
 Uptown Saturday Night

### March

Woman is the Future of Man  
 History Boys  
 The World According to Shorts  
 Fast Food Nation  
 Nashville  
 Kansas City



**April**

*Riding Alone for Thousands of Miles*  
*Little Children*  
*Fear and Trembling*  
*Oyster Farmer*  
*Carmen Jones*  
*Island in the Sun*  
*Odds Against Tomorrow*  
*The World, the Flesh, and the Devil*

**May**

*Quinceañera*  
*The 9th Annual Lenore Marwill Jewish Film Festival-Flint*  
*Three Times*  
*The Aura*  
*Volver*  
*Talk to Her*

**June**

*Venus*  
*Iraq in Fragments*  
*My Country, My Country*  
*The Return*

**Film Festivals****Hispanic Heritage Month Cinefestival**

*Sponsored by Comcast*

October 6–8, 13–15. Films (2) and videos (9) presented in recognition of Hispanic Heritage Month. In addition to films from Mexico and Cuba, a series of videos were screened during the Saturday matinee, with free admission. Videos addressed a wide range of issues, including immigration, labor, Chicano arts, music and culture. 91 people attended.

**Selections from the 34th Annual Dance on Camera Festival**

December 29–30. The FIA partnered with the Dance Films Association as a touring venue for the 2006 Dance on Camera Festival. Initiated in 1971 to foster creativity and encourage collaborations between dancers and filmmakers, the festival promoted awareness of the art form by providing an overview of the field and a public space for artists to share ideas. 12 films presented on Friday and Saturday. 58 people attended.

**Lenore Marwill Jewish Film Festival**

May 6–9. In partnership with the Flint Jewish Federation and Jewish Community Services, ten films representing the Jewish Diaspora were screened over four days. 560 people attended.

**Ancillary Activities****February 3, 10, 17, 24**

Special Tribute to Sidney Poitier. 25 people attended.

**March 17**

*PIXELVISION: Electronic Folk Art*, a special interactive lecture by Gerry Fialka, curator and founder of *PXL THIS Film Festival*, in conjunction with the Fleckenstein Video Gallery Exhibition, *The Best of PXL THIS* (March 6 – April 1).

**March 7 & April 7, 14, 21, 28**

Special Tribute to Harry Belafonte. 55 people attended.

**May 6–9**

Jewish Film Festival. Q&A discussion with *Checking Out* filmmaker Mark Lane. 80 people attended. Q&A discussion with *Jewish Women in American Sport* director Schuli Eschel. 82 people attended.

**Fleckenstein Video Gallery****Fleckenstein Video Gallery - Video Art Exhibitions**

In FY2007, the gallery featured works by the following artists: Antonio Muntadas (October), Ateyyat Al Abnoudy (November), Salima Alkassim (December), Tony Cokes (January–February), *The Best of PXL THIS* (March, cocurated with Gerry Fialka), Pipilotti Rist (April), Nam June Paik (May–June), and *The Wooster Group* (July–August).



*The Sandwich*  
 Ateyyat El Abnoudy



*Pause*  
 Tony Cokes



*The Best of PXL THIS*  
 Gerry Fialka



*Global Groove*  
 Nam June Paik



*I'm Not The Girl Who Misses Much*  
 Pipilotti Rist



*White Homeland Commando*  
 The Wooster Group

The Flint Institute of Arts' educational programming is designed to enhance the quality of life for local residents and visitors by encouraging creativity and personal growth. From introductory activities to challenging art experiences, the FIA is dedicated to engaging and educating the community as a center for lifelong learning. Educational programming celebrates diverse artistic expression through the interpretation of art objects in the galleries and through process-oriented artmaking experiences in the Art School. In FY2007, Education program attendance totaled 38,511.



Halloween Happenings

## Art School

During FY2007, the Art School served 1,696 students for a total of 9,509 encounters. Classes taught by 25 part-time faculty members were offered in three sessions and included drawing, painting, ceramics, printmaking, weaving, and photography. The students came from Genesee and 11 surrounding counties. \$12,669 in scholarships was awarded to 170 students, 58% children and 42% adults.

## Docent Program

Docents are integral to the Education department. Eighteen volunteers were involved in the docent program in FY2007. They participated in intensive training sessions from September through June. Docents assisted with 536 gallery and studio programs, serving 8,048 people, and resulting in 979 hours of service. Seven students from Pierce School were involved in the Junior Docent program, providing 3 tours to 78 classmates and resulting in 24 hours of training and service.

### Docents

Oya Agabigum	Linda Harwood	Jeanette Nassif
Debby Bourke	Diana Heitman	Caroline Panzer
Martha Brewer	Lee Hockstad	Patty Pieron
Janet Cameron	Lynne Hurand	Judy Piper
Susan Damone	Katherine Livengood	Stephanie Shields
Billie Fisher	Barb Mills	Barb Van Dette

### Junior Docents

Bianca Fields	Mishari Ryan
Santrell Moore	Kory Walker
Josée Muldrew	Moneisha Williams
Domonique Roberson	



## Gallery & Outreach Programs

During FY2007, gallery and outreach programs served a total of 19,329. Programs for K-12 school groups included gallery and studio lessons at the Flint Institute of Arts and afterschool and outreach programs taught in schools and community centers throughout Genesee County. A total of 17,303 K-12 students were served, with 66% from public schools, 31% from private schools, and 3% from charter schools. Eighty-three percent were from Genesee County, 6% Oakland; 5% Shiawassee, 3% Livingston, 1.5% Lapeer, and 1.5% Presque Isle. K-12 groups consisted of 60% K-8 students, 19% Art, 13% other, and 8% multiple grades/subjects. Sixty-eight percent of students were Caucasian, 27% African American, 3% American Indian, 1% Hispanic, .5% Asian, and .5% other.

Revised offerings for home school groups resulted in a 239% increase in participation over last year. Monthly gallery and studio programs served 619 children and parents. Visits by college students increased 146%, serving 911 students, while adult groups visiting the FIA numbered 496, an increase of 41% over last year.

## Public Programs

During FY2007, public programs served a total of 9,673, an increase of 90% over FY2006. Art à la Carte, a weekly noontime video series, served 1,066 people. Educator workshops, which attract teachers from 17 counties in southeast Michigan, were attended by 152 people. The FIA Lecture Series focused on topics related to the FIA's exhibitions, collections and art education programs. Through illustrated lectures presented by scholars, collectors, and educators, the series presents diverse perspectives and introduces new ideas about art. Eleven lectures were presented to a total of 1,200 people. Monthly family programs are designed for children ages 4 and up and accompanying adults. Offered free of charge, the programs served 4,084 during FY2007. In addition, the FIA presented programs at community festivals, lectures, conferences, and exhibitions, reaching a total of 3,171 people.



Dr. William Gerdtz, *American Impressionism*

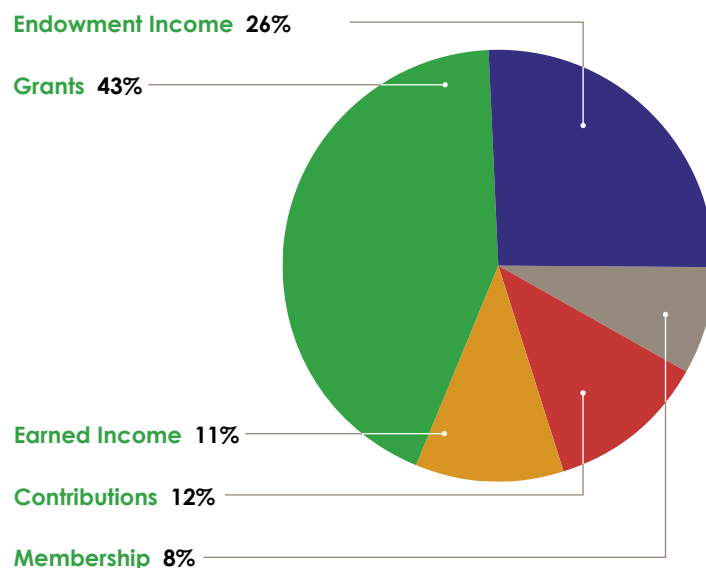


Summer Celebration

## Development

The Development Department's primary responsibility is sustaining and securing financial support for the Institute through membership growth, grant support, sponsorships, annual appeals, planned gifts and endowment funds. In addition, the Department handles promotion, marketing, and public relations. The staff manages facility use and works with a broad and diverse volunteer base and develops new audiences and partnerships.

The FIA has five primary sources of support: endowment income, grants, earned income, contributions, and membership.



## Endowment Income

The annual yield of endowment funds, both restricted and unrestricted, support the Institute's general operating, exhibitions, acquisition and preservation of art, educational programs, scholarships, lectures and membership initiatives. The endowment balances totaled \$19,669,066 contributing to the FIA's annual income. Donations in the form of planned gifts and bequests are traditionally allocated to endowment.

## Grants

The FIA receives grant awards from foundations, community organizations, state and federal agencies, and businesses and corporations. The Institute is also funded by two auxiliary groups, the Founders Society and Friends of Modern Art. Grants support 43% of the budget.

## Earned Income

The revenue generated from the sales, tuition, facility rentals, special events, and admissions provides 11% of the FIA's general operating support.

## Contributions & Membership

Annual membership dues, gifts for milestones, the annual appeal, memorials or gifts to specific programs and events generates 20% of the annual income.

The highest level of membership donors (the Silver Patron level and above) comprises the Rubens Society. Members are invited to three exclusive events throughout the year, which included dinner with Thompson Lecturer Dr. William Gerdt, a black-tie Holiday dinner in the FIA's Isabel Hall, and a trip to the Toledo Museum of Art. Rubens programs were made possible through the support of an anonymous donor.

A new FIA group was formed this year called the Print Society. This group is dedicated to the connoisseurship of original prints by noteworthy artists, the purchase of prints to augment the FIA's collection, and the pursuit of personal collecting.

A new Children's Membership was offered for ages 6–12. Benefits include a 5% discount in the Museum Shop's Kid's Corner and in The Café, a children's quarterly newsletter, and four children's events per year.

For this fiscal year's listings, please see pages 28–43.

Each year, support groups donate thousand of dollars and volunteer hours to the Institute supporting exhibitions, art acquisitions and programs. The Flint Institute of Arts is deeply grateful to the members of the Friends of Modern Art and the Founders Society for their generous support.

## Founders Society

**Letter from the President, Marilyn Kopp**

The Founders Society concentrated on fund raising in our 2006–2007 year for the newly completed and expanded Flint Institute of Arts.

Our first event, the annual *Van Goghing, Going, Gone Auction*, was a success, with a sell-out of the tickets, and raising \$24,000 net for the FIA. We had the sum of \$25,000 remaining on our \$50,000 pledge for the Capital Campaign, and we were able to pay \$15,000 of that amount this year, leaving only \$10,000 for next year. We also raised money from Art Sales & Rental, and Travel & Tours' Collette vacation tours, for which we receive 10% of each ticket sold, and the Winter Art Fair which we conducted as a partnership collaboration with FOMA. In the coming year, our Collette Tours trip to the south of France in the fall is sold out, and we will be receiving approximately \$6000 for our participation. We will be sponsoring the First Frost Winter Art Fair in partnership with the FIA on November 2 and 3, and have dedicated the proceeds to The Art of Collecting Exhibition, which will also be held in November of 2007. Our Art Sales & Rental is thriving in its new space, and we receive proceeds on a regular basis. We expect to receive as much as \$10,000 next year.

Our Hospitality committee prepared and presented numerous receptions following opening lectures, including *Vanitas*, *Lewis & Clark* and the *Artists of the Great Lakes*. They do a wonderful job on very little money, and the members seem to really enjoy the creativity of the receptions. We have purchased numerous books for the library, as we have done each year. We also sponsored the bi-monthly newsletter for the total price of \$20,000. In addition to providing extensive volunteer services, we have donated over \$45,000 to the FIA in the 2006–2007 year, and hope to continue at that level next year.

We installed our new officers on June 12, 2007 at our annual luncheon, held at the home of Connie Armstrong, outgoing past president. Our president for 2007–2008 will be Susan Bolhouse.



## Friends of Modern Art

**Letter from the President, Christopher Kelly, Jr.**

This past year marked yet another productive period for the Friends of Modern Art. First, to keep in step with the "new look" of the FIA, FOMA also created a "new look" with an updated logo. Membership benefits were expanded to include: discounts and complimentary passes to FOMA sponsored events including the Flint Art Fair, FOMA Film Series, and FOMA sponsored travel; invitations to FOMA members' receptions and previews; and one complimentary Flint Art Fair theme poster.

Music, food, perfect weather, and great art ensured an enjoyable time for all at the 40th Annual Flint Art Fair. Artists nationwide attracted nearly 10,000 visitors over two days. With the newly created Flint Art Fair website, artists were able to obtain fair information, print artist applications, and even submit artwork online streamlining the process.

Other highlights of the year include sponsorship of the exhibition *After Lewis & Clark*, and the 20th year of the FOMA film series, which was a resounding success.

FOMA brought back the winter art fair now known as *First Frost Art & Fine Crafts Fair*. The event was well received by both the artists and the public. With the first year getting off to a great start, there will be many more to come.

In the coming year, FOMA will continue to build membership, plan additional events, and work to further to support the FIA.

Finally, we would like to thank the staff of the FIA for the sustained assistance and support they provide to our organization.





## Development

The FIA presented an active schedule of programs and events for members and the general public throughout the year including lectures with distinguished speakers in the arts and humanities, summer and winter art fairs, art auction, wine tasting, and golf outing. FIA members received invitations to attend opening events, which included special lectures and receptions for temporary exhibitions.

## Thompson Lecture

The 16th Annual Thompson Lecture members-only event was held on Thursday, October 12, 2006 at 6:00 pm. Dr. William Gerdts, a Professor Emeritus of Art History at the Graduate School of the City University of New York, brought new insight on American Impressionism through his lecture. Dr. Gerdts is the author of numerous books on American art including *American Impressionism*, *American Still-Life Painting*, and *The Golden Age of American Impressionism*. In addition, he wrote the introduction for the catalog, *American Collection at the Flint Institute of Arts*.

Dr. and Mrs. Jack W. Thompson established the Thompson Lecture in 1991 to enable the FIA to present a distinguished speaker to the arts or humanities each year. The Thompson lecture series is one of the Institute's few members-only events and was established, in part, to attract new members to the Flint Institute of Arts.



Dr. William Gerdts

## Wine Tasting

The eighth annual wine tasting event, *Bacchanale: Festival of Wine and Food*, held on Friday, February 16, 2007, raised over \$15,000 for the FIA, featured award winning wines from Michigan and around the world, a raffle vacation package to California Wine Country. 300 guests attended the event.

Event Sponsor: Citizens Bank

Wine Sponsors: Brys Estates, Chateau Chantal, Chateau Grand Traverse, Oxford Wine & Beverage Co., Solterra Wines, Vintners Cellar of Burton, Viviano Wine Importers, Wills Winery; Cigar Sponsor: Sunrise Coast Tobacco Co.; Restaurant Sponsors: Genesys Banquet & Conference Center, Blue Collar Gourmet/Big Easy, Broad Street Grille, Dale's Cheesecake Shoppe, Edible Arrangements, Great Harvest Bread Co., Fandangles', French Laundry, Salvatore Scallopini; Raffle Sponsors: Arciero Family, EOS Estate Winery, La Quinta Inn of Paso Robles, CA; Salon Bien.

## Annual Flint Art Fair

On June 9 and 10, 2007, the 40th Annual Flint Art Fair returned to the grounds of the Flint Institute of Arts. Sponsored by Dort Federal Credit Union and presented by the Flint Institute of Arts' Friends of Modern Art, this Flint tradition brought in nearly 10,000 devoted shoppers to view works from North American artists who displayed painting, sculpture, furniture, glass, textile, jewelry, pottery, drawing, and print works.



8th Annual Wine Tasting



40th Annual Flint Art Fair

## Facilities Rental

The FIA hosted many groups and organizations this past fiscal year including the Charles Stewart Mott Foundation, the Michigan Museum Association Annual Conference, the 17th Annual Riegle Awards, Smith Barney, Genesee County Medical Society, the Ruth Mott Foundation, Genesee County Community Mental Health, Merrill Lynch, Fifth Third Bank, Governor Granholm, New Paths, Inc., Mott Community College, Kettering University, the Flint Club, The Flint Journal, Flint Area Convention & Visitors Bureau, University of Michigan-Flint, Delta Chi Fraternity, Mason Radio, Kwanzaa, Chase Bank, Michael Moore, Holiday Inn, Dort Federal Credit Union, GE Plastics, Genesee Christian High School, Flint Jewish Federation, Council of Michigan Foundations, Crooked Tree Art Center, Junior League, the Community Foundation, Greater Flint Olympian and CANUSA Games Association, and Early Childhood Investment Corporation.

More than 3,500 visitors attended these events and more than \$15,000 was raised for the FIA through rental income.



Isabel Hall

## Development

On September 30, 2006, William White, Chairman of the Charles Stewart Mott Foundation cut the ribbon opening the new Charles Stewart Mott Gallery Wing, which contains the Herbert H. and Grace A. Dow Gallery and the Donald and Alice Johnson Galleries. The opening completed the final phase of a \$20 million project.

Sponsored by Citizens Bank, visitors enjoyed two experts who spoke about the magnitude of art and the role museums play in our lives, Roy Slade former director of the Corcoran Gallery of Art and Cranbrook Academy of Art and Milton Esterow the publisher of *Art News*.

The expansion brought about a change in how the Institute presents the collection as a whole and provides an expanded temporary exhibition gallery. Gallery sponsors include Comcast Cable and Chase Bank. Temporary Exhibition Galleries are free on Saturdays thanks to a grant from the Target Corporation.

Congratulatory remarks were made by William Hartman, President of Citizens Bank.



Ribbon cutting at the entrance to the Gallery Wing by William S. White, President of the Charles Stewart Mott Foundation.



Ribbon cutting at the entrance to the Dow Gallery by Margaret Ann Riecker, President of The Herbert H. and Grace A. Dow Foundation.



Ribbon cutting at the entrance to the Johnson Gallery by Mary Alice Heaton and Linda LeMieux, the daughters of Donald and Alice Johnson.

Opening of the **Charles Stewart Mott Gallery Wing**





## Development

Over the past year the Flint Institute of Arts grew with the addition of the Charles Stewart Mott Gallery Wing. The construction was fully paid for but the FIA must raise additional operating funds for the expanded facility.

In March of 2006, the Institute began an Endowment Campaign to raise funds to guarantee sustainability. The new three year goal of the Campaign is \$7 million. *Take a Seat*, the sponsorship of seats in the FIA Theater, is a component of the Campaign. Now, a little more than a year later, the Campaign has reached the halfway mark toward the goal.

## Corporations

Community Podiatry Group,  
P.C.  
McFarlan Home

## Community Organizations

the Clay Club  
The Detroit Society of Women  
Painters and Sculptors

## Foundations

Burroughs Memorial Trust  
Charles Stewart Mott  
Foundation

## Honorarium Gifts

In honor of Dr. Srinivas B.  
Mukkamala  
In honor of Dr. Frederick  
VanDuyne for services to  
Thomas O'Neal  
In honor of Esther M. Wiles,  
Lucinda A. Wiles, Margaret G.  
Danks, William K. Wiles, Cheri  
L. Morris  
In honor of Denny Morgan &  
Bob Hummel  
In honor of:  
Badar Ahmed, M.D.  
Hindi Ahmed, M.D.  
Shafi Ahmed, M.D.  
Pauline Aquino, M.D.  
Joseph Armovit, D.O.  
Ghassan Bachuwa, M.D.  
Angela Badra, M.D.  
Brian Beck, D.O.  
John Behm, M.D.  
Regis Benton Jr., M.D.  
Seth Bernard, D.O.  
William Bernard, D.O.  
Jagdish Bhagat, M.D.  
Brian Bhagat, M.D.

John Bitner, M.D.  
Marta Bonkowski, M.D.  
Jeffrey Bossenberger, D.O.  
James Brown, M.D.  
Kelvin Callaway, M.D.  
John Commet, D.O.  
Stanley Conhon, M.D.  
Edwin DeLange, D.O.  
Samuel Dismond, M.D.  
Ernesto Duterte, M.D.  
Charles Ellsworth, D.O.  
Christine Elsholz, M.D.  
Abeer Fayyad, M.D.  
Linvall Fleetwood, M.D.  
Brenda Fortunate, D.O.  
Kenneth Ganapini, M.D.  
John Georgakopoulos, D.O.  
May Ghalib, M.D.  
Edward Ghattas, D.O.  
Allen Goldberg, M.D.  
Maria Goleba, M.D.  
Edward Gomez, M.D.  
Kazem Hak, M.D.  
Jamal Hammoud, M.D.  
Kim C. Hendrick, M.D.  
Hurley Adult Medical Clinic  
Gregoro Imperial, M.D.  
Orestes lung, M.D.  
Larry Kage, D.O.  
Jitendra Katneni, M.D.  
Parmanand Khandelwal,  
M.D.  
Gary King, M.D.  
Kiran Kinra, M.D.  
Samasandrapalya Kiran, M.D.  
Steven Kohl, M.D.  
Kathleen Kudray, D.O.  
Robert Kuffa, D.O.  
Nancy Kursik, M.D.  
Jennifer Larson  
Wendy Lawton, M.D.  
Paul Lazar, M.D.  
Jose Lopez, M.D.  
James Lum, D.O.  
Chandulal Malde, M.D.  
Henry Mendoza, M.D.  
Barry Miller, M.D.  
Shaheen Mohamed, M.D.  
George Mohamedally, D.O.  
The Children's Office, Kienan  
Murphy, D.O.

Paul Musson, M.D.  
 Mark Neumann, D.O.  
 Thomas Nguyen, D.O.  
 Harold Nims, M.D.  
 Damayanthi Pandrangi, M.D.  
 James Park, M.D.  
 Miguel Perez Pascual, M.D.  
 Ravikumar Peddireddy, D.O.  
 Mona Perry, M.D.  
 Abdullah Raffee, M.D.  
 Munroop Randhawa, M.D.  
 Harvey Ring, D.O.  
 Brenda Rogers-Gray, D.O.  
 Gary Roome, M.D.  
 Kenneth Root, P.A.  
 Elmahdi Saeed, M.D.  
 Saed Sahouri, M.D.  
 Rajalakshmi Sankaran, M.D.  
 Syed Sattar, M.D.  
 Byron Schoolfield, M.D.  
 Jon Schriener, D.O.  
 Silvia Seoane, M.D.  
 Ronald Shaheen, D.O.  
 Steven Shapiro, M.D.  
 Punam Sharma, M.D.  
 Janice Shimoda, D.O.  
 Gary Smothers, D.O.  
 Kevin Snyder, D.O.  
 John Stoker, D.O.  
 Randall Sturm, M.D.  
 Nulufer Sumer, M.D.  
 Rajakumari Swamy, M.D.  
 Daniel Tackabury, M.D.  
 Ayman Tadros, M.D.  
 Josetta Tharipeal  
 Nester Tomycz, M.D.  
 Allen Trager, D.O.  
 Frederick VanDuyne, M.D.  
 Sasikala Vemuri, M.D.  
 Koteswara Vemuri, M.D.  
 Carol Voremkamp-Cooper,  
 D.O.  
 John Wagonlander, M.D.  
 Danielle Walsh-Moore, D.O.  
 Melinda Wheatley, M.D.  
 Frederick Wurster, D.O.  
 Michael Young, D.O.  
 Louinda Zahdeh, M.D.  
 Michael Ziccardi, D.O.  
*by the Community  
 Podiatry Group, P.C.*

## Memorial Gifts

In memory of Patricia Dort  
 In memory of June Hauser  
 In memory of Dr. Fouad Rabiah  
 In memory of Myrtle and Marc  
 Stern  
 In memory of Kenneth S. Wiles

## Individuals

Mr. & Mrs. Robert K. Armstrong  
 Mr. & Mrs. Fred Auch  
 Mr. & Mrs. Richard B. Childs  
 Mr. & Mrs. F. James Cummins  
 Cmdr. & Mrs. Lawrence Cywin  
 Mrs. Patrick Doherty  
 Mr. & Mrs. Joseph DuCharme  
 Mr. Ryan M. Eashoo  
 Mr. & Mrs. Marvin L. Failer  
 Mr. & Mrs. Richard Fox  
 Evelyn D. Shores Hall Trust  
 Mr. & Mrs. Ernest W. Hamady  
 Mr. Samuel T. Hinckley  
 Ms. Mary Houton  
 Ms. Helen R. Hoyt  
 Mr. & Mrs. Arthur Hurand  
 Mr. & Mrs. Gary J. Hurand  
 Ms. Lynne Hurand  
 Mr. & Mrs. Robert J. Irwin  
 Dr. & Mrs. John S. Isaac  
 Ms. Brenda Kendall  
 Mr. & Mrs. Peter D. Kleinpell  
 Mr. Max Lepler & Mr. Rex L.  
 Dotson  
 Mr. & Mrs. Joseph Marconi  
 Mr. & Mrs. William H. Moeller  
 Mr. & Mrs. Jay Nelson  
 Mrs. Fouad Rabiah  
 Mr. & Mrs. Eino Rajala  
 Mr. & Mrs. Daniel E. Richards  
 Miss Alyssa Shook  
 Mr. & Mrs. D. James Smith  
 Ms. Ernelle Taylor  
 Mrs. Mary Ann Tremaine  
 Dr. & Mrs. Jay A. Werschky  
 Mr. & Mrs. Robert A. Wood  
 Marion Wyatt



FIA Theater





*John Henry receives a check from Elena McCreary of Guardian Security Services, Inc. to sponsor the FIA's Audio Guides.*



*John Henry receives a check from Margie Fiszman-Kirsch, Corporate Affairs Manager of Comcast Cable.*



*The 64 inch tall monolithic "dango" (the Japanese word for dumpling) was donated by Alan and Kelly Ginsburg of Florida, formerly of Lansing, in honor of the birthdays of Flint philanthropists and FIA supporters Art and Bess Hurand.*



*The Trustees of the Charles Stewart Mott Foundation enjoyed a preview of the C. S. Mott Gallery Wing a few weeks before the public opening.*



*JPMorgan Chase, City President, Robert Rummel presents a check for the Bank's annual sponsorship of the Graphics Gallery and the FIA's One Plus educational program.*

## Capital Campaign

### Corporations

#### Bronze Benefactors

(\$100,000–\$249,999)

JP Morgan Chase, Michigan  
Sorensen Gross Construction  
Company

#### Gold Sponsor

(\$75,000–\$99,999)

Citizens Bank Wealth  
Management, N.A.

#### Silver Sponsors

(\$50,000–\$74,999)

LaSalle Bank  
Tom Ryan Distributing Co.

#### Bronze Sponsor

(\$25,000–\$49,999)

Young Chevrolet Cadillac

#### Gold Patrons

(\$10,000–\$24,999)

Applegate Chevrolet Co.  
ATI Group  
Baker College  
Goyette Mechanical  
Hurand & Hurand  
Serra Automotive

#### Silver Patrons

(\$5,000–\$9,999)

Bill Carr Signs, Inc.  
Fabris Pearce Tile & Terrazzo,  
Inc.  
Kelly-Younger Interiors, Inc.  
Patsy Lou Williamson Buick  
- GMC  
PrintComm Inc.  
Security First Benefits  
Corporation  
Security First Insurance  
Yeo & Yeo, P.C., CPA

#### Bronze Patrons

(\$1,000–\$4,999)

Dort Federal Credit Union  
Piper-McCredie Agency, Inc.

### Foundations

#### Platinum Sponsor

(\$2,000,000–\$2,999,999)

Isabel Foundation

#### Silver Sponsor

(\$50,000–\$74,999)

Edelweiss Foundation/John &  
Janie Fleckenstein

### Community Organizations

#### Silver Sponsor

(\$50,000–\$74,999)

Founders Society

### Memorial Gifts

#### Silver Sponsor

In memory of Joan Landaal  
In memory of favorite  
art teacher from Mott  
Community College, Mr.  
Robert Caskey

### Individuals

#### Silver Benefactor

(\$250,000–\$499,999)

Hurand Family

#### Bronze Benefactors

(\$100,000–\$249,999)

Neithercut Family Contribution

#### Bronze Sponsors

(\$25,000–\$49,999)

Ms. Susan Steiner Bolhouse & Mr.  
William S. Ballenger  
Mr. & Mrs. F. James Cummins  
Mr. & Mrs. Ernest W. Hamady  
Ms. Lynne Hurand  
Mrs. Robert C. Morgan  
Ms. Linda L. Pylypiw  
Mr. & Mrs. Eino Rajala  
Mr. & Mrs. Harry Swartz  
Mr. & Mrs. James Truesdell, Jr.  
Mr. & Mrs. William M. Wentworth

#### Gold Patrons

(\$10,000–\$24,999)

Mr. & Mrs. Robert K. Armstrong  
Mr. & Mrs. Harry L. Eiferle, Jr.  
Mr. J. William Jensen  
Mr. & Mrs. Mark L. Lippincott  
Mr. & Mrs. William H. Moeller  
Piper Brothers & Wives  
Investments  
Mrs. Marion D. Pohrt  
Mr. & Mrs. Richard Sly

#### Silver Patrons

(\$5,000–\$9,999)

Mr. & Mrs. Michael J. Behm  
Mr. & Mrs. Robert L. Bessert  
Ms. Jane M. Bingham  
Judge & Mrs. Earl E. Borradaile  
Mr. & Mrs. William J. Churchill  
Dr. & Mrs. Michael Cross  
Mrs. Julius Gutow  
Mr. & Mrs. John B. Henry III  
Mr. & Mrs. Kevin L. Johns  
Mr. & Mrs. Elliot Joseph  
Mr. & Mrs. Christopher S. Kelly, Sr.  
Mr. & Mrs. John Lindholm  
Miss Annette Marcinkoski  
Mr. & Mrs. Dennis Morley  
Mr. & Mrs. Robert S. Piper  
Mr. & Mrs. Khalil M. Saab  
Ms. Grayce Scholt  
Mrs. Helene J. Streich  
Mrs. Mary Helen Taylor  
The Peter Thompson Family

#### Bronze Patrons

(\$1,000–\$4,999)

Mr. Carroll G. Baker & Ms.  
Kimberly Roberson  
Mr. & Mrs. Earl Bell  
Ms. Patricia L. Bernard  
Mr. & Mrs. Chad Brennan  
Mr. & Mrs. James D. Draper  
Dr. & Mrs. A. Bruce Dresbach  
Mr. & Mrs. Michael A. Farella  
Mr. Richard W. Fortner  
Mrs. Frances G. Gumpfer  
Mark & Rebecca Hanner  
Mr. & Mrs. Joel H. Harris  
Edward & Donna Kurtz  
Mr. & Mrs. Larry L. Latham  
Mr. John G. LeSage  
Ms. Denise M. Lucas  
Mr. & Mrs. Samuel E. Morello  
James R. & Helen Sue Morgan  
Mr. & Mrs. Thomas F. Niaz  
Mr. & Mrs. Joseph M. Novajosky  
Mr. & Mrs. Jan C. Nyland  
Mr. & Mrs. Bernhard Stroh  
Mr. & Mrs. Michael D. Thompson  
Mr. & Mrs. Gerald L. Walters  
Mrs. Karen A. Wells  
Dr. & Mrs. Jay A. Werschky  
Mr. & Mrs. Michael L. Wright  
Mr. & Mrs. Art G. Yeotis

#### Friends

(\$1–\$999)

Mrs. Pauline C. Angle  
Mr. & Mrs. Peter M. Bade  
Dr. & Mrs. William D. Beck &  
Kristen  
Mr. & Mrs. Thomas M. Dawson  
Ms. Jeanne Dobes  
Ms. Vicky Farah  
Mrs. Billie Fisher  
Mrs. Janice M. Hanson  
Mr. Louis A. Hawkins  
Mr. & Mrs. Jeffrey J. Himelhoch  
Ms. Beth E. Howarth  
Mr. & Mrs. Stephen S. Landaal  
Mr. Max Lepler & Mr. Rex L.  
Dotson

Mr. & Mrs. George I. Liljeblad  
Ms. Carole A. Pappas  
Mr. & Mrs. Thomas M. Shubert  
Ms. Joan W. Smalley  
Ms. Mary Vecellio  
Mr. & Mrs. Kevin F. Walker  
Mrs. Janet Warren  
Mrs. Janet Williamson

## Trust & Endowment Funds

Joy Allen Endowment Fund  
Bishop Flint Institute of Arts  
Trust  
Bowers Charitable Trust  
F.A. & A.M. Bower Charitable  
Trust  
Viola E. Bray Charitable Trust  
Mary Mallory Davis  
Endowment Fund  
DeWaters Memorial Trust  
Flint Institute of Arts Trust  
Account  
FIA Major Exhibitions Trust Fund  
FIA Membership Endowment  
Trust  
FIA Art School Endowment  
Fund  
Flint Institute of Arts  
Endowment Fund  
Hurand/Bryer Family Program  
Endowment Fund  
Ruth Mott Fund for the benefit  
of the FIA  
Willson Trust  
Endowment Funds of the  
Community Foundation of  
Greater Flint:  
Herbert J. & Dorothy W.  
Booth Fund

Raymond A. Finley  
Endowment Fund  
Flint Cultural Center Fund  
- FIA  
Flint Institute of Arts  
Endowment Fund  
The Isabel Fund for the Art  
School at the FIA  
The Elizabeth Koegel  
Neithercut Endowment  
Fund  
Louise E. & Mark H. Piper Jr.  
Family Fund  
Jack W. & Virginia H.  
Thompson Fund  
George L. Whyel  
Endowment Fund for  
the FIA

## Grants & Sponsorships

American Arab Heritage  
Council  
Mr. & Mrs. Robert K. Armstrong  
ATI Group  
Mr. & Mrs. Fred Auch  
Baker College  
Mr. & Mrs. Jonathan E.  
Burroughs II  
CARS 108  
Charles Stewart Harding  
Foundation  
Charles Stewart Mott  
Foundation  
Citizens Bank Charitable  
Foundation  
Citizens Bank Wealth  
Management, N.A.  
the Clay Club  
Comcast Cable  
Fabris Pearce Tile & Terrazzo,  
Inc.

The Flint Journal  
Founders Society  
Genesee Valley Center  
Glazing Solutions, Inc.  
Guardian Alarm Company of  
Michigan  
IBM Matching Grants Program  
Jack A. and Aviva Robinson  
Fund  
JB French Consulting  
JP Morgan Chase, Michigan  
JP Morgan-Detroit  
Mr. & Mrs. Thomas Landaal  
LaSalle Bank  
The Loeb Charitable Trust  
Administered by Citizens  
Bank Wealth Management,  
N.A.  
Martha S. Piper Charitable  
Fund  
Michigan Council for Arts and  
Cultural Affairs  
Platinum Mechanical, Inc.  
Riegler Press, Inc.  
Rowe Incorporated  
Ruth Mott Foundation  
S&Z Sheetmetal  
Mr. & Mrs. Howard S. Shand  
SKR, Inc.  
Sorensen Gross Construction  
Company  
Stella & Frederick Loeb  
Charitable Trust  
Target Corporation  
The Children's Office  
Torch Bar & Grill  
Tri-City Acoustical  
Corporation  
Viola E. Bray Charitable Trust  
Weinstein Electric Co.  
Dr. & Mrs. Jay A. Werschky  
Mr. & Mrs. William S. White  
Mr. & Mrs. Robert A. Wood  
Yeo & Yeo, P.C., CPA

## Collections & Education

Ms. Susan Steiner Bolhouse &  
Mr. William S. Ballenger  
Charles Stewart Harding  
Foundation  
Comcast Cable  
Mr. & Mrs. Donald E. DeGraaf  
The Flint Journal  
Founders Society  
Ms. Kathleen George  
Ms. Melissa Lewellyn  
Mrs. Susan J. Marr  
Ms. Geraldine Reed  
Mr. & Mrs. Howard S. Schultz  
Mrs. Dorothy P. Smith  
Mr. & Mrs. William R. Stolpin  
E. Rodman Sutton  
The Whiting Foundation

## Special Events & General Contributions

Mr. & Mrs. William D. Anderson  
Jim & Rita Angle  
Arciero Family  
Ms. Fran Babbitt  
Mr. & Mrs. David F. Barbour  
Mr. & Mrs. Paul D. Barrett  
Big Easy  
Mr. Donald J. Black  
Mrs. Marie S. Black  
Ms. Renate Black  
Blue Collar Banquet Center  
& Grill  
Ms. Susan Steiner Bolhouse &  
Mr. William S. Ballenger  
Broad Street Grille  
Mr. & Mrs. Donald L. Bronson

Brys Estates  
CARS 108  
Charles Stewart Harding  
Foundation  
Charles Stewart Mott  
Foundation  
Chateau Chantal  
Cheateau Grand Traverse  
Mr. Michael D. Corey  
Ms. Gail M. Curry  
Ms. Sally Dale  
Dale's Cheesecake Shoppe  
Ms. Susan A. Damone  
Mrs. Patrick Doherty  
Mr. Michael A. Dombos &  
Ms. Ann E. Soukup  
James & Lynne Draper  
Mr. & Mrs. Cecil Dulworth  
E.M. Tune Productions  
Edible Arrangements  
EOS Estate Winery  
Fandangles'  
Ms. Pauline Farah  
Michael & Charlene Farella  
Flint Artists Market  
Flint Institute of Arts Staff  
The Flint Journal  
Karen Fordos  
French Laundry  
Friends of the Flint Public  
Library  
Mr. & Mrs. Robert S. Fuller  
Judge & Mrs. Paul V. Gadola  
Genesys Banquet &  
Conference Center  
Mr. Williamson H. George  
Gerych's Flowers and Gifts  
Mrs. Doreen Glomski  
Ms. Judy Grace  
Great Harvest Bread Co.  
Mr. & Mrs. Eugene B. Griffel  
Mr. & Mrs. Robert Hardy  
Mr. & Mrs. John B. Henry III  
Mr. & Mrs. Richard C.  
Hockstad

Holiday Inn Gateway  
Ms. Mary Houton  
J. Lewis Cooper/Viviano Wine  
Importers  
Mr. & Mrs. Christopher S. Kelly,  
Jr.  
Kelly-Younger Interiors, Inc.  
Albert & Barbara Koegel  
Mr. & Mrs. Frederick L. Kump  
Mr. Miles Lam  
Mrs. Renee A. Landaal  
La Quinta Inn of Paso Robles,  
CA  
Mr. James A. Michalak  
Mr. Larry Miller  
Oxford Wine & Beverage  
Mr. & Mrs. Gordon Parnes  
PrintComm  
Mr. & Mrs. Eino Rajala  
Dr. Jacquelyn Reinertson  
Retired Men's Fellowship of  
Greater Flint  
Dr. & Mrs. Harvey Ring  
Mr. & Mrs. Khalil M. Saab  
Salon Bien: Kari Bartman,  
Michelle Drozdowski,  
Monica Duran, Allison  
Joyce, and Melissa  
Lewellyn  
Salvatore Scallopini  
Nathan & Joan Schafer  
Mrs. Marsha Schweikert  
Chuck & Kathryn Sharbaugh  
Ms. Gladys Shemes  
Ms. Mary Sheppard  
Shiawassee Shores Retirement  
Park  
Mr. & Mrs. Brent A. Shook  
Mr. & Mrs. Donald J. Skaff  
Mr. & Mrs. George Skaff  
Mr. & Mrs. John L. Skaff  
Mr. & Mrs. Woodrow W. Skaff  
Mrs. Mathilde Slider  
Mr. & Mrs. J. Parkhill Smith  
Mr. & Mrs. Michael R. Sobol



Sohn Linen  
 Mr. John Solomon  
 Solterra Wines  
 Ms. Elizabeth Stine  
 Sunrise Coast Tobacco Co.  
 Ms. Jane B. Trotter  
 Mr. & Mrs. James Truesdell, Jr.  
 Vintners Cellar Winery (Burton)  
 Mr. & Mrs. William S. White  
 Ms. Jan M. Wieland  
 Wills Winery  
 Judge & Mrs. Thomas C. Yeotis  
 Mr. & Mrs. Paul A.  
 Zimmermann

## 2006 Annual Appeal Gifts

Agnes Bower Charitable Trust  
 Mr. & Mrs. Peter Anastor  
 Mr. & Mrs. Arthur A. Anderson  
 Applegate Chevrolet Co.  
 Mr. & Mrs. Reid Baxter & Dan  
 Schultz  
 Dr. & Mrs. William D. Beck &  
 Kristen  
 Mrs. Doris Beebe  
 Mr. & Mrs. Carl Bekofske  
 Mr. & Mrs. George F. Bennis  
 Dr. & Mrs. William M. Bernard  
 Ms. Jane M. Bingham  
 Mr. & Mrs. Jack A. Blosser  
 Mr. & Mrs. Robert Bottinelli  
 Ms. Inez A. Boyd  
 Mr. Philip J. Braun  
 Mrs. Edmund Brownell  
 Dr. & Mrs. Stephen R. Burton  
 Mr. & Mrs. Tom E. Butts  
 Mr. & Mrs. James Cherry  
 Ms. Mary L. Christian  
 Ms. Betty J. Clark

Mrs. Nancy J. Cook  
 Ms. Christel Crawford  
 Mrs. Nancy M. Cronin  
 Mr. & Mrs. Jeffrey Deachin  
 Mrs. Rosemary R. DeCamp  
 Mr. John Ellenwood  
 Ms. Nancy Epstein  
 Mr. & Mrs. John M. Fives  
 Mr. & Mrs. Ed Fizell  
 Dr. & Mrs. Melvin Flamenbaum  
 Flint Cultural Center  
 Corporation  
 Dr. & Mrs. Gregory J. Forstall  
 Frederick Fisher & Partners  
 Architects  
 Mr. Tendaji W. Ganges  
 Ms. Lee Giacalone  
 Dr. & Mrs. Peter R. Gluck  
 Dr. & Mrs. Rudolf Goetz  
 Mr. Sanders A. Goodstein  
 Jeanne & Ralph Graham  
 Great Lakes Legal Team, PLC  
 Mr. Danny Grier  
 Mr. & Mrs. Henry M. Hanflik  
 Mrs. Marie E. Harrison  
 Mrs. Diana Harsch  
 Ms. Joanna Hartranft  
 Mr. & Mrs. Eugene Heffelfinger  
 Ms. Annetta Hendrickson  
 Mr. & Mrs. Jeffrey J.  
 Himelhoch  
 Mr. John H. Hogue  
 Mr. Larry D. Howell  
 Mr. & Mrs. James N. Johnson  
 Dr. Benjamin & Estelle  
 Kaufman  
 Ms. Brenda Kendall  
 Mr. & Mrs. James R. Kettler  
 Dr. Samasandrapalya Kiran  
 Mr. David Klein  
 Mr. & Mrs. Richard H. Kraft  
 Ms. Jane A. Kravetz  
 Mr. & Mrs. Stephen Larzelere-  
 Kellermann  
 Byron & Margaret Latter

Mr. & Mrs. James Lay  
 Mr. & Mrs. Cyril Leder  
 Dr. & Mrs. Leslie L. LeMieux, Jr.  
 Mrs. Kathryn Lescelius  
 Therese & David Leyton  
 Mr. & Mrs. Larry Lifshitz  
 Mrs. Suzanne T. Linder  
 Mr. Robert B. Mackey  
 Mr. John Mahey  
 Miss Annette Marcinkoski  
 Ms. Marjorie Markon  
 Dr. & Mrs. Berton J. Mathias  
 Doyle & Mary Ellen McOwen  
 Mr. & Mrs. Michael Melet  
 Dr. Juan E. Mestas  
 Mr. & Mrs. Samuel E. Morello  
 James R. & Helen Sue Morgan  
 John & Pat Mucha  
 Ms. Ann L. Naddeo  
 Mrs. Georgeana Nowoc  
 Mr. & Mrs. Anthony Puidokas  
 Ms. Edith J. Qualman  
 Mrs. Fouad Rabiah  
 Jane & James Richardson  
 Dr. & Mrs. Walter Z. Rundles, Jr.  
 Mr. & Mrs. Khalil M. Saab  
 Mrs. Miriam S. Schaffer ACSW  
 Mrs. Karen Schneider & Mr.  
 Leonard Meizlish  
 Mrs. Trudi Schreiber  
 Mr. & Mrs. Howard S. Schultz  
 Mr. & Mrs. Mark A. Schwartz  
 Dr. & Mrs. Scott T. Smith  
 Ms. Shelley R. Spivack  
 Miss Barbara Stewart  
 Mr. & Mrs. James E. Streby  
 Mr. & Mrs. Henry C. Thoma, Jr.  
 Mr. & Mrs. James Truesdell, Jr.  
 Dr. & Mrs. Frederick VanDuyne  
 Dr. Mitchell J. Weiss  
 Dr. & Mrs. Jay A. Werschky  
 Dr. & Mrs. James Williams  
 Mr. & Mrs. Michael L. Wright  
 Mr. & Mrs. Clair Ward

\* denotes increased gift level

+ denotes Friends of Modern Art (FOMA) membership

## Corporate Memberships

### Corporate Benefactor

(\$1,500 & above annually)

Abbott's Meat Inc.  
GM Flint Community Impact Team  
Hubbard Supply Co.  
Main Manufacturing Products  
Sunset Hills Association  
The Flint Journal

### Corporate Sponsor

(\$1,000 – \$1,499 annually)

Applegate Chevrolet Co.\*  
Baker College  
Big John Steak & Onion, Inc.  
Citizens Bank Wealth Management, N.A.  
Genesee Urgent Care  
HealthPlus of Michigan  
Hubbard Supply Co.  
JP Morgan Chase, Michigan  
Kelly-Younger Interiors, Inc.  
Michigan Eye Institute  
Rowe Incorporated  
Sorensen Gross Construction Company  
Tom Ryan Distributing Co.

### Corporate Donor

(\$500 – \$999 annually)

Joliat, Tosto, McCormick & Bade

### Corporate Supporter

(\$250 – \$499 annually)

Dale's Natural Foods  
Law Offices of John A. Libby  
Piper Realty Company  
Vogt's Flowers  
WJRT ABC 12

### Corporate Sustainer

(\$100 – \$249 annually)

A-1 Mobile  
AFLAC  
A-Frame Awards  
Bresser's Information Service  
Citadel Marketing Group

Daystar Development  
Fifth Third Bank  
Fromholz, Paauwe & Baker CPA, PC  
Genesee Valley Center  
German Language Services  
Gillie's Restaurant  
Gloria's Ltd.  
Great Lakes Legal Team, PLC  
JP Morgan Chase  
Landaal Packaging Systems  
Larry Launstein, Jr.  
LaSalle Bank  
Michigan Moving Systems\*  
Michigan Rehabilitation Services  
NBC 25 - WEYI  
Peerless  
Personal Computing Solutions  
Rachor, Purman & Tucker CPAs  
Runyan Pottery Supply Inc.  
Serra Family Foundation  
Skaff Carpet & Furniture Co.  
Smith Peabody Stiles Insurance Inc.  
T.S. Jenkins & Assoc., Inc.+  
The Chosen Few Corporation\*  
The French Laundry  
Torch Bar & Grill  
Tranquility Center  
Tremaine Real Estate Co.  
WNEM - 5  
Yeo & Yeo, P.C., CPA

## Individual Memberships

### Benefactor

(\$5,000 & above annually)

Edward & Elizabeth Neithercut

### Gold Patron

(\$2,500 – \$4,999 annually)

Mr. & Mrs. Peter D. Kleinpell\*  
Mr. & Mrs. Howard S. Shand  
Mrs. Shirley H. Stone+

### Silver Patron

(\$1,000 – \$2,499 annually)

Dr. & Mrs. Abd Alghanem  
Dr. & Mrs. Daniel Anbe  
Mr. & Mrs. Robert K. Armstrong  
Mr. & Mrs. Richard P. Baks  
Mrs. Susan Steiner Bolhouse & Mr. William S. Ballenger  
Mr. & Mrs. Robert L. Bessert+  
Mr. & Mrs. Herbert J. Booth+  
Mr. Philip J. Braun  
Mr. & Mrs. Howard J. Bueche\*+  
Dr. & Mrs. Michael Cross  
Mr. & Mrs. F. James Cummins+  
Mr. & Mrs. James D. Draper+  
Mr. & Mrs. Harry L. Eiferle, Jr.  
Mr. & Mrs. Louis Emmert  
Mr. Robert F. Enders  
Mr. & Mrs. Michael A. Farella+  
Dr. Theodore Fellenbaum & Mr. Michael W. Swain  
Mr. & Mrs. Robert S. Fuller\*  
Judge & Mrs. Paul V. Gadola  
Hank & Bonnie Graff  
Mr. & Mrs. Ernest W. Hamady  
Ms. Vickie L. Harrington\*  
Mr. William Hentgen  
Mr. & Mrs. Richard C. Hockstad  
Mr. John H. Hogue  
Mr. & Mrs. Arthur Hurand+  
Mr. & Mrs. Gary J. Hurand+  
Ms. Lynne Hurand+  
Mr. & Mrs. Mark Jacobson  
Mr. Donald E. Johnson, Jr.  
Miss Fay J. Joseph+  
Dr. Benjamin & Estelle Kaufman  
Mr. & Mrs. Christopher S. Kelly+  
Michael & Kay Kelly  
Mr. & Mrs. Raymond J. Kelly III  
Mr. & Mrs. James R. Kettler  
Albert & Barbara Koegel+  
Mr. & Mrs. John Kopp+  
Mrs. Virginia R. Landaal  
Mr. & Mrs. John Lausman  
Dr. & Mrs. Leslie L. LeMieux, Jr.  
Mr. & Mrs. William H. Leoni  
Therese & David Leyton  
Mr. & Mrs. John Lindholm+  
Mr. & Mrs. Mark L. Lippincott  
Mrs. John MacArthur  
Mr. & Mrs. Bruce Mackey  
Mrs. Vickie Michelson

Mr. & Mrs. William H. Moeller  
 Mrs. Robert C. Morgan  
 Dr. Appa Rao & Dr. Sumathi  
 Mukkamala  
 Drs. Bobby & Nita Mukkamala\*  
 Dr. & Mrs. Kienan F. Murphy+  
 Mr. & Mrs. Douglas R. Nickel+  
 Mr. & Mrs. David A. Noffert\*  
 Mr. & Mrs. Raymond J. Persia\*  
 Mr. & Mrs. Randolph P. Piper\*+  
 Mr. & Mrs. Robert S. Piper+  
 Ms. Linda L. Pylypiw+  
 Mrs. Fouad Rabiah+  
 Mr. & Mrs. Eino Rajala+  
 Drs. Michael & Virginia Rucks+  
 Mrs. Marion W. Ryan  
 Mr. & Mrs. Khalil M. Saab  
 Mr. & Mrs. Clinton Sampson  
 Dr. Russell G. Sandberg  
 Mr. & Mrs. Timothy C. Sanford\*  
 Dr. & Mrs. Paul E. Schroeder\*+  
 Chuck & Kathryn Sharbaugh+  
 Mr. & Mrs. William Sheppard+  
 Mrs. Dorothy P. Smith+  
 Tom & Pam Smith & Family  
 Mrs. Helene J. Streich  
 Mrs. Mary Helen Taylor+  
 Dr. Jack W. Thompson  
 Mr. & Mrs. Arthur Thompson-  
 Shaw+  
 Mrs. Mary Ann Tremaine+  
 Mr. & Mrs. James Truesdell, Jr.  
 Mr. & Mrs. Robert G. VanDette\*+  
 Dr. & Mrs. Frederick VanDuyne  
 Mr. & Mrs. Kevin F. Walker\*+  
 Dr. Bonita Wang  
 Mr. & Mrs. Charles R. Weeks  
 Mrs. Marjorie B. Wentworth  
 Mr. & Mrs. William M. Wentworth  
 Dr. & Mrs. Jay A. Werschky\*+  
 Mr. & Mrs. Ridgway H. White\*+  
 Mr. & Mrs. William S. White+  
 Mr. & Mrs. Kenneth J. Williams  
 Mr. & Mrs. David Zielinski

#### Donor

(\$500 – \$999 annually)  
 Mr. & Mrs. Kelly B. Beardslee+  
 Mr. & Mrs. Michael J. Behm\*  
 Ms. Sandra K. Butler  
 Mr. & Mrs. Thomas M. Dawson

Dr. Nedra Downing &  
 Mr. Howard G. Downing\*+  
 Mrs. Evelyn E. Dykewicz  
 Mrs. Julius Gutow+  
 Mr. & Mrs. Harold N. Kallis  
 Mrs. Thaddeus J. Karwoski+  
 Mr. & Mrs. Wayne W. Knecht+  
 Mr. & Mrs. Richard H. Kraft+  
 Mr. & Mrs. David S. McCredie\*  
 Mrs. Vera M. Nyland &  
 Ms. Diane Nyland  
 Dr. & Mrs. Milton Panzer+  
 Dr. & Mrs. Aladdin Rahman\*  
 Mr. Paul Sears  
 Mr. & Mrs. J. Parkhill Smith+  
 Mr. David Walters  
 Dr. & Mrs. Melvyn D. Wolf

#### Sponsor

(\$250 – \$499 annually)  
 Mr. & Mrs. Fenton A. Addington+  
 Mr. & Mrs. David F. Barbour  
 Mr. Richard & Dr. Mary Barron  
 Dr. & Mrs. Joseph T. Batdorf\*  
 Mr. & Mrs. Carl Bekofske  
 Mr. & Mrs. Earl Bell\*  
 Dr. Orlando Benedict\*  
 Mr. & Mrs. George F. Bennis+  
 Mrs. Beverly Bernard+  
 Dr. & Mrs. William M. Bernard  
 Mr. & Mrs. Edmund W. Brouillet\*  
 Mr. Ralph R. Brown  
 Mrs. Edmund Brownell\*  
 Mr. Ruben Burks  
 Mr. & Mrs. Jonathan E. Burroughs  
 II  
 Mr. & Mrs. James E. Burt+  
 Dr. & Mrs. Stephen R. Burton+  
 Joy B. Carter, Ph.D.  
 Sam & Bonnie Chambers\*+  
 Mr. & Mrs. Richard F. Cordell\*  
 Ms. Pamela M. Daoust\*  
 Mrs. Fenton Davison  
 Mrs. Patrick Doherty+  
 Mr. David T. Dort\*  
 Mr. Greg Edquist\*+  
 Mr. John Ellenwood  
 Dr. & Mrs. Anthony R. Ellis  
 Mr. & Mrs. Eric Ethington\*  
 Mrs. Pauline Fishler+  
 Mrs. Julie B. Fizell\*  
 Dr. & Mrs. Melvin Flamenbaum\*

Mr. Charles R. Foreman  
 Dr. Brenda Fortunate &  
 Mr. Edward White+  
 Mrs. Florence J. Fugenschuh\*  
 Hon. Judith A. Fullerton &  
 Mr. Ward Chapman  
 Dr. & Mrs. Scott A. Garner+  
 Mrs. Dorothy Gee  
 Mrs. Ann M. Gibson+  
 Mr. & Ms. Roger H. Gillespie-  
 Brown+  
 Dr. & Mrs. Rudolf Goetz\*  
 Mr. & Mrs. Gerard R. Goyette  
 Mrs. Donna A. Graham  
 Mr. Earl E. Gravlin & Mrs. Julia  
 Sullivan\*+  
 Mrs. Evelyn Shores Hall\*+  
 Mr. & Mrs. H. James Hall\*+  
 Mrs. Margaret Hallitt  
 Samuel & Graciela Harris\*  
 Mr. Louis A. Hawkins+  
 Mr. & Mrs. T.W. Heitman+  
 Mr. & Mrs. Mark Henrikson  
 Mrs. Mary Ittigson\*+  
 Mr. & Mrs. James N. Johnson  
 Mr. Steven E. Johnson\*+  
 Mr. & Mrs. Elliot Joseph\*  
 Dr. Samasandrapalya Kiran+  
 Mr. David Klein\*+  
 Ms. Kathryn Koegel+  
 Byron & Margaret Latter\*+  
 Mr. John G. LeSage\*+  
 Ms. Lynn D. Lindebrekke\*  
 Mr. Edward A. May  
 Ms. Olivia P. Maynard &  
 Mr. S. Olof Karlstrom  
 Doyle & Mary Ellen McOwen\*  
 Mrs. Karen P. Miller\*+  
 Dr. & Mrs. Alan L. Morgan+  
 Mr. & Mrs. Dennis Morley\*  
 Mrs. Sally J. Moss+  
 Mr. & Mrs. Jan C. Nyland+  
 Mrs. Roland Parker  
 Mr. & Mrs. Lawrence F. Piper  
 Mr. William H. Piper\*  
 Mr. & Mrs. Carl A. Pohly+  
 Mrs. Marion D. Pohrt  
 Judge & Mrs. Robert M.  
 Ransom+  
 Mr. & Mrs. James P. Ricker+  
 Mrs. Sally R. Ricker  
 Mr. & Mrs. Michael J. Riha\*+

Mr. & Mrs. David Roeser+  
 Miss Nadja S. Roivas\*  
 Dr. & Mrs. Daniel J. Ryan\*+  
 Dr. & Mrs. Rabbi Salimi\*+  
 Dr. & Mrs. Frederick C. Schreiber  
 Ms. Grayce Scholt\*+  
 Mrs. Beverly J. Shomsky\*  
 Mr. & Mrs. John P. Siler  
 Dr. Mildred B. Smith  
 Mrs. Shirley A. Stevens\*  
 Mr. & Mrs. David A. Stokes  
 Mrs. Janet L. Stokes  
 Ms. Carolyn Stubbs  
 Chris & Joyce Theodoroff\*+  
 Mr. & Mrs. Henry C. Thoma, Jr.\*  
 Dr. D.J. Trela\*  
 Mrs. Mary M. Tuuri  
 Mr. & Mrs. Ernest O. Vahala  
 Mr. & Mrs. Kim Virkler\*+  
 Mr. & Mrs. James Vukovich+  
 Mr. & Mrs. William Walker  
 Ms. Carolyn Warren+  
 Dr. Mitchell J. Weiss\*  
 Mrs. Mary E. Whaley & Mr. Rick  
 Kroeger\*+  
 Mr. & Mrs. Dean Yeotis\*

#### Sustainer

(\$100 – \$249 annually)  
 Mr. Glen Adams\*+  
 Mrs. Bette M. Aikman  
 Mr. & Mrs. Clyde D. Allard  
 Mr. & Mrs. John L. Allard\*  
 Mr. & Mrs. Peter Anastor\*+  
 Mr. & Mrs. Arthur A. Anderson\*  
 Mr. & Mrs. James Anderson  
 Mr. & Mrs. Dane Andresen+  
 Mrs. Pauline C. Angle+  
 Ms. Sandra Applegate  
 Mrs. Mary Beth Atkinson  
 Mr. & Mrs. Peter M. Bade\*  
 Dr. & Mrs. Duane J. Bailey  
 Mr. & Mrs. Dennis Barge  
 Mr. David J. Barkey  
 Dr. & Mrs. Walter Barkey  
 Mr. Phillip Barnhart\*+  
 Ms. Donna Bauer  
 Mr. & Mrs. Reid Baxter & Dan  
 Schultz+  
 Dr. & Mrs. William D. Beck &  
 Kristen  
 Mr. & Mrs. Donald L. Becker+

Mr. & Mrs. Richard J. Behm  
 Mr. & Mrs. LeRoy Bence\*+  
 Mr. & Mrs. William L. Bennetts\*+  
 Ms. Darlene P. Benore &  
 Ms. Cornelia Massolo  
 Mrs. Robert Benson  
 Mr. & Mrs. Stephen D. Bernstein+  
 Mr. & Mrs. Eugene Bielik  
 Dr. Morley & Mrs. Judith  
 Biesman\*  
 Ronald & Lucille Bigelow+  
 Ms. Jane M. Bingham\*+  
 Ms. Sara Gierens Blair  
 Mr. & Mrs. Bruce D. Blanchard  
 Ms. Evelyn Nida Blanford+  
 Ms. Emily Bluemer\*  
 Mr. & Mrs. Matthew Bolhouse  
 Mr. & Mrs. Donald A. Bomeli  
 Ms. Jennifer Booth\*+  
 Mr. & Mrs. Bruce M. Bowers\*+  
 Mr. & Mrs. Robert Bottinelli\*+  
 Dr. Patrick Botz  
 Mr. & Mrs. Michael Bourke  
 Mr. & Mrs. Donald R. Brege  
 Mr. & Mrs. Donald L. Bronson  
 Donald & Wynn Ann Bryant  
 Mr. & Mrs. Michael Burkhardt+  
 Ms. Jennifer Burnett & Mr. Sean  
 Siebigtheroth  
 Mr. & Mrs. Joseph Burroughs  
 Mr. Archie R. Campbell  
 Dr. Elizabeth H. Campbell &  
 Mr. H. Russell Campbell  
 Mr. & Mrs. Alexander Chan+  
 Ms. Mary L. Christian\*+  
 Mr. & Mrs. William J. Churchill  
 Ms. Melba R. Clapp+  
 Ms. Betty J. Clark+  
 Mr. Howard D. Cline  
 Rob & Kathy Cojeen+  
 Mr. Carl M. Conner+  
 Dr. & Mrs. Frank W. Cook\*  
 Mr. & Mrs. G. Allen Cook  
 Samuel & Darylee Coplin\*  
 Mr. & Mrs. George A. Corser\*+  
 Dr. & Mrs. Marshall Cossman\*+  
 Mrs. Nora M. Crego  
 Cmdr. & Mrs. Lawrence Cywin  
 Mr. & Mrs. Donald F. Dahlstrom\*+  
 Mrs. Opal Danziger  
 Mr. & Mrs. Wm. Stefan Davidek+  
 Mr. & Mrs. Dayne L. Davis

## Development

Ms. Dorothy Gae Davis\*  
 Mr. James A. Davis & Ms. Carol M. Fabrizio  
 Mr. & Mrs. Todd Deachin\*  
 Mr. & Mrs. Max Dean  
 Mrs. Rosemary R. DeCamp  
 Mr. & Mrs. Donald E. DeGraaf  
 Mr. John V. Dempsey+  
 Ms. Stephany R. Diana\*+  
 Mr. & Ms. Marvin Diem\*+  
 Mr. & Mrs. Raymond Diem\*  
 Mr. & Mrs. Carl A. Diener+  
 Dr. & Mrs. Samuel R. Dismond, Jr.  
 Mr. & Mrs. Thomas B. Doherty  
 Mr. & Mrs. Richard Donahue\*+  
 Mr. Dallas C. Dort  
 Dr. & Mr. James Dowsett  
 Dr. & Mrs. A. Bruce Dresbach+  
 Dr. William N. Dudley\*  
 Miss Mildred S. Dunn+  
 Mr. & Mrs. Richard H. Ebbott  
 Miss Judith M. Ebner  
 Mr. & Mrs. Harry F. Ehrnst+  
 Dennis & Loretta Ellwood  
 Mr. & Mrs. Bennett Engelman+  
 Mr. & Mrs. Jack W. Ennest  
 Dr. & Mrs. Ali A. Esfahani\*  
 Ms. Kelly Evans  
 Mr. & Mrs. Marvin L. Failer+  
 Ms. Michelene A. Falk  
 Dr. & Mrs. Cyrus Farrehi+  
 Mr. & Mrs. Gary Fernsler+  
 Ms. Deborah Ferris+  
 Mr. & Mrs. Ron Fitch  
 Mr. & Mrs. Joseph F. Foos+  
 Dr. & Mrs. Gregory J. Forstall+  
 Mr. & Mrs. John Frederick\*  
 Mr. & Mrs. Herbert A. Friesen  
 Ms. Patricia Gage+  
 Mr. Tendaji W. Ganges+  
 Mr. Howard L. Gay  
 Mr. John R. Gazall  
 Perry & Marcy Gazzarari  
 Dr. & Mrs. Peter R. Gluck+  
 Mr. & Mrs. Kevin J. Godin  
 Mr. & Mrs. Lawrence C. Goldman  
 Mr. & Mrs. H. James Graham\*  
 Jeanne & Ralph Graham\*  
 Mr. & Mrs. Melvin E. Gregory  
 Mr. Danny Grier  
 Mrs. Evelyn MacKenzie Gryson

Dr. & Mrs. Edwin H. Gullekson  
 Mrs. Frances G. Gumpfer  
 Mr. & Mrs. Daniel V. Guthrie  
 Mr. & Mrs. William Guttrich  
 Ms. Roberta S. Haas\*  
 Dr. & Mrs. David Haines  
 Dennis & June Haley  
 Ms. Ingrid Halling+  
 Mr. & Mrs. Anthony A. Hanak\*+  
 Mr. & Mrs. Henry M. Hanflik+  
 Frankie & Robert Hardy\*+  
 Mr. & Mrs. Joel H. Harris+  
 Mr. & Mrs. Richard S. Harris+  
 Mrs. Diana Harsch\*+  
 Mr. & Mrs. Ronald J. Hartman+  
 Mrs. June J. Hauser\*  
 Mr. Donald Heidenberger\*  
 Ms. Annetta Hendrickson  
 Dr. & Mrs. Alan Henke+  
 Mr. & Mrs. Joseph Higgins\*  
 Dr. & Mrs. John V. Hinterman\*  
 Ms. Mary Jean Holbrook\*+  
 Mr. & Mrs. Harry Hopkins\*  
 Ms. Mary Houton  
 Mr. & Mrs. James Howlett  
 Ms. Judith I. Ingram\*  
 Ms. Judith Ann Irwin+  
 Dr. & Mrs. John S. Isaac\*  
 Mr. & Mrs. Kevin L. Johns+  
 Mr. & Mrs. Charles M. Johnston  
 Mr. Dannie Jones & Mrs. Lubna Bathish Jones+  
 Dr. Robert Jones  
 Mr. & Mrs. G. Donald Kaye+  
 Mr. & Mrs. Christopher S. Kelly, Jr.+  
 Mr. & Mrs. Watson Kenworthy  
 Dr. Alan Klein\*  
 Mr. & Mrs. Robert Koch  
 Mr. Kenneth Kolat\*+  
 Dr. & Mrs. Prasad Kommarreddi+  
 Mr. & Mrs. Don Kooy  
 Ms. Susan M. Kornfield & Dr. Peter Loggan+  
 Dr. & Mrs. Herman P. Kuehn+  
 Edward & Donna Kurtz\*  
 Miss Kara Kvasnicka+  
 Mr. & Mrs. John E. LaBoskey+  
 Mr. & Mrs. John H. Lang+  
 Dr. Audrey L. Lattie+  
 Dr. & Mrs. Paul Lauber  
 Ms. Marty Lawrence\*+

Mr. Paul A. Lazar & Ms. Susan P. Kirby+  
 Mr. & Mrs. Stephen Larzelere-Kellermann\*+  
 Mr. & Mrs. Wayne LeDuc\*  
 Mr. David M. Lengyel\*+  
 Ms. Kay Ella Lennerth\*+  
 Mr. Max Lepler & Mr. Rex L. Dotson+  
 Mr. & Mrs. Carl A. Leser+  
 Mrs. Nancy Lewandowsky\*  
 Ms. Melissa Lewellyn+  
 Mrs. Eden Liu  
 Mr. & Mrs. William Livengood\*+  
 Mr. Donald E. Lovejoy+  
 Ms. Denise M. Lucas+  
 Mr. Robert J. MacDonald+  
 Ms. Maureen MacVay  
 Dr. & Mrs. F.M. Magyar  
 Mr. & Mrs. John Mair III\*  
 Mr. & Mrs. Anthony J. Mansour  
 Ms. Jeanette R. Mansour & Mr. Joe Green  
 Miss Annette Marcinkoski+  
 Mr. & Mrs. John Marcum\*+  
 Mr. & Mrs. David R. Mark\*  
 Mr. John Marshall & Dr. Mary Marshall  
 Dr. & Mrs. Berton J. Mathias+  
 Ms. Rosellen McAlear  
 Mr. & Mrs. Patrick W. McAvinchey  
 Jack & Pam McCarthy\*+  
 Mr. & Mrs. John J. McIntosh  
 Dr. & Mrs. Richard J. McMurray  
 Mr. & Mrs. Thomas B. McNally  
 Mr. & Mrs. Michael Melet\*+  
 George & Kathryn Menoutes  
 Mrs. M. Kathryn Miller  
 Mr. & Mrs. Robert J. Miner\*+  
 Mr. & Mrs. Edward A. Mitchell  
 Mrs. Doris A. Moelling+  
 Mr. & Mrs. Samuel E. Morello  
 James R. & Helen Sue Morgan+  
 Mr. & Mrs. Michael M. Morgan+  
 Mrs. Karen A. Morgante  
 Dr. & Mrs. Paul Morin+  
 Mr. & Mrs. Jeffery W. Moss  
 Mr. & Mrs. John Moynihan  
 Ms. Marge Murphy & Mr. Scott Martin+  
 Mr. & Mrs. Alexander C. Murray+

Mr. & Mrs. Robert W. Myers+  
 Mrs. Billie Nagler  
 The Navock Family\*  
 Rev. Thomas Nenneau  
 Mr. & Mrs. David R. Newbill\*+  
 Mr. John D. Nickola  
 Mr. & Mrs. John Nieman  
 Mr. & Mrs. Frank Ninteman  
 Mrs. Wilaine V. Northway  
 Mr. & Mrs. Joseph M. Novajosky  
 Ms. Marcia Noyle-Loje  
 Mr. & Mrs. John A. Oliver  
 Rev. David C. Olson+  
 Mr. David O'Neill & Mrs. Kathleen Buckley-O'Neill  
 Ms. Cindy Ornstein & Mr. Charles R. Johnson+  
 Dr. & Mrs. James Owen+  
 Ms. Carole A. Pappas+  
 Rev. & Mrs. John G. Park\*  
 Mr. William A. Parks & Mrs. Mary Jo Hobart-Parks+  
 Mr. & Mrs. Eric Petersen  
 Mrs. Debra Phillips  
 Mr. & Mrs. Douglas M. Philpott  
 David & Randee Pieper+  
 Dr. & Mrs. Frederick P. Pike+  
 Dr. Brant S. Pittsley  
 Mr. & Mrs. Dudley Place+  
 Ms. Linda Pohly & Mr. Alan Branham  
 Mr. & Mrs. David Poock & Ms. Ramonda Poock+  
 Mrs. Beverly I. Post+  
 Mrs. Stella Poulos  
 Mr. & Mrs. Eugene N. Powlison+  
 Ms. Sheila Mulholland Pratt+  
 Mr. & Mrs. Frank Preketes+  
 Mr. & Mrs. Edward J. Preville+  
 Mr. & Mrs. Carl F. Raiss III\*  
 Dr. Bobbi J. Ramp\*+  
 Dr. & Mrs. Allan F. Randall+  
 Mr. Sean Reagen  
 Ms. Sally L. Reigle+  
 Dr. Jacquelyn Reinertson  
 Mr. & Mrs. H. William Reising  
 Kelly & Lois Revenaugh+  
 Dr. & Mrs. Gerald S. Reznick  
 Mr. & Mrs. A. Davison Rice  
 Jane & James Richardson+  
 Mr. & Mrs. Carl Riseman\*+  
 Mr. & Mrs. David J. Roberts\*

Mr. & Mrs. Andrew Roeser+  
 Mr. & Mrs. Thomas M. Rogers\*+  
 Ms. Dolores M. Rosenberg\*+  
 Mr. & Mrs. Jack Rosenberg\*+  
 Mr. & Mrs. Ralph R. Russell+  
 Mrs. Eileen A. Roth  
 Mr. & Mrs. Gilbert Y. Rubenstein  
 Ms. Geraldine Rudduck\*+  
 Ms. Zoanne Saab  
 Mrs. Lisa Saab-O'Donnell\*  
 Dr. & Mrs. Sukamal Saha\*  
 Dr. Randle Samuels & Ms. Gail Offen+  
 Mrs. Arnold Schaffer+  
 Mrs. Miriam S. Schaffer ACSW+  
 Kenneth & Phyllis Schilling  
 Mr. & Mrs. Edwin Schreiber  
 Mr. & Mrs. Richard T. Schroeder+  
 Mr. & Mrs. Howard S. Schultz+  
 Ms. Janet A. Schultz+  
 Mr. & Mrs. Kurt A. Schulze  
 Mr. & Mrs. Leo Seide  
 Mr. & Mrs. William A. Shaheen, Jr.  
 Mr. William H. Sharpe+  
 Mr. & Mrs. Robert L. Shegos  
 Mrs. Alma M. Shelley  
 Mr. & Mrs. Thomas M. Shubert  
 Mrs. Gail B. Shulman  
 Mr. & Mrs. Robert T. Sibisky  
 Dr. & Mrs. Milton J. Siegel+  
 Dr. Allan Silverton  
 Dr. & Mrs. T. Trevor Singh  
 Mr. & Mrs. A. Ronald Sirna+  
 Mr. John J. Skolnik, Jr.  
 Mrs. Mathilde Slider  
 Miss Joanne P. Smith\*+  
 Ms. Sandra K. Smith+  
 Mrs. Allison Smith Williams+  
 Ms. Maureen H. Smyth  
 Ms. Virginia Saddy  
 Kurt & Marjorie Soper  
 Dr. & Mrs. Benjamin M. Sorscher\*  
 Dr. & Ms. J. Merrill Spencer+  
 Mr. & Mrs. Harold Stahly+  
 Dr. Phoebe B. Stanzler+  
 Ms. Bertha Stephens  
 Miss Barbara Stewart  
 Mr. & Mrs. William R. Stolpin\*  
 Mr. & Mrs. Bernhard Stroh  
 Mr. Dale A. Suomela  
 Dr. & Mrs. Maxwell F. Taylor+



Mr. & Mrs. Carl D. Terwilliger+  
 Mr. & Mrs. Dale E. Thompson  
 Mr. & Mrs. Michael D. Thompson\*  
 Mr. & Mrs. Philip E. Timyan  
 Mr. & Mrs. Bob Toms+  
 Dr. & Mrs. Basim A. Towfiq  
 Mr. & Mrs. Jamie Truesdell III  
 Mr. & Mrs. Joseph Trybus  
 Mr. & Mrs. Robert J. VanDuyne+  
 Mr. & Mrs. William Vredevoogd  
 Mr. Charles F. Wagonlander\*  
 Mrs. Brenda L. Wagner\*+  
 Mrs. Judith A. Walker\*+  
 Ms. March Walker & Mr. Ron Livasy  
 Ms. Roxanne Walker\*  
 Dr. Wrex Weaver & Dr. Karen Williams Weaver\*  
 Mr. & Mrs. Lynn E. Webb  
 Mr. & Mrs. Fred J. Weber  
 Ms. Brenda Wehrli+  
 Mr. & Mrs. Richard C. Weiermiller  
 Dr. & Mrs. Stuart B. Weiner  
 Mr. & Mrs. William M. Wentworth, Jr.+  
 Dr. & Mrs. Martin W. Werschky+  
 Mr. & Mrs. Charles V. White  
 Keith & Kim Whitmore  
 Dr. & Mrs. James Williams  
 Bart & Lori Wilson+  
 Mr. & Mrs. Jerome D. Winegarden, Jr.\*  
 Jerome & Judith Wolbert  
 Mr. & Mrs. Keith Wolfram+  
 Mr. David E. Wood  
 Mr. & Mrs. Robert A. Wood  
 Mr. & Mrs. Michael L. Wright+  
 Mr. & Mrs. Art G. Yeotis\*  
 Judge & Mrs. Thomas C. Yeotis+  
 Mr. & Mrs. Vincent Zamora+  
 Mr. & Mrs. David Zick

#### Contributor

(\$50 – \$99 annually)

Mr. & Mrs. Robert A. Ackerman+  
 Mrs. Marian Agree  
 Mrs. Kimberley J. Alexander+  
 Mr. & Mrs. Thomas W. Allen  
 Mr. & Mrs. Gary Alter  
 Mr. & Mrs. Theodore H. Amberg  
 Ms. Marian L. Anderson\*

Ms. Wilma Anderson  
 Jim & Rita Angle\*  
 Mr. & Mrs. William R. Angus+  
 Mrs. Donald Annen  
 Mr. Robert L. Anthony  
 Mr. & Mrs. Charles M. Appel  
 Mrs. Joellen Arvoy\*  
 Darwin & Barbara Asa+  
 Mr. & Mrs. Jeffrey Attwood+  
 Mr. & Mrs. Kenneth G. Aurand\*+  
 Mr. & Mrs. Kenneth D. Baab  
 Mrs. Paulette S. Balasko Parker\*  
 Mr. & Mrs. D. Keith Baldwin  
 Ms. Lisa Ballard  
 Mr. & Mrs. Donald W. Ballentine\*  
 Kenneth & Susan Banks\*  
 Mr. & Mrs. Kirk Barkel  
 Mr. & Mrs. R. W. Barker  
 Gary & Maureen Bates+  
 Mr. & Mrs. David Beaulieu+  
 Bobby & Vicki Bell  
 Mr. Fred Bellairs\*  
 Ms. Dawn M. Bentley+  
 Mr. & Mrs. Charles Beresford  
 Dr. & Mrs. Sultan M. Bhimani+  
 Mr. & Mrs. Harry J. Binder  
 Mr. & Mrs. Jack A. Blosser  
 Mr. & Mrs. Nicholas Bockart\*  
 Dr. & Mrs. Wilbur J. Boike  
 Mrs. Joyce E. Bolo  
 Judge & Mrs. Earl E. Borradaile  
 Mr. & Mrs. Russell E. Bowers  
 Ms. Inez A. Boyd  
 Mr. & Mrs. Robert Boyd+  
 Mrs. Martha C. Brewer+  
 Mr. & Mrs. John C. Briggs+  
 Ms. Toni Brinker\*  
 Mrs. Linda L. Brown  
 Mr. George Brueck  
 Ms. Trisha Burrough  
 Mr. & Mrs. Tom E. Butts+  
 Ms. Suzan Campbell  
 Mr. & Mrs. Duncan Cardillo  
 Ms. Sandra K. Carlson  
 Mr. & Mrs. Gilbert Cass+  
 Mr. & Mrs. David Chapple\*+  
 Mrs. Nickolas Chardoul\*  
 Mr. & Mrs. Nathan B. Chase  
 Mr. & Mrs. James Cherry+  
 Mr. & Mrs. Richard B. Childs+  
 Mr. & Mrs. John M. Christena+  
 Mr. & Mrs. Bryan Christie

Mr. George Trone & Ms. An-Me Chung\*  
 Mrs. Pamela Cislo  
 Mrs. Judy Clark\*+  
 Jeff & Brooke Clothier+  
 Mr. & Mrs. William J. Coates  
 Mr. & Mrs. Bruce T. Colasanti  
 Mr. Don Cole  
 Mrs. James Collins  
 Mr. & Mrs. Thomas Cooper  
 Mrs. Patricia L. Coucke\*  
 Rev. Mary B. Covington  
 Dr. & Mrs. Clifford J. Cox II\*  
 Mr. Jerry Crago+  
 Mr. & Mrs. Frederick D. Cribbins  
 Mrs. Nancy M. Cronin  
 Mr. & Mrs. Fred Cross\*+  
 Mr. & Mrs. Daniel Cruz  
 Ms. Karen Curtiss  
 Ms. Marjorie Dahle  
 Ms. Susan A. Damone  
 Mr. & Mrs. Donald R. Daniel+  
 Mrs. Bruce Danks\*  
 Ms. Nancy A. Dash\*+  
 Mrs. Judith L. Davidson  
 Mr. & Mrs. Delmar D. Davis+  
 Dr. & Mrs. Marc D. Davis  
 Mrs. Barbara DeClercq+  
 Mr. & Mrs. Larry L. Deitering  
 Mrs. Mildred K. Desautels  
 Mr. & Mrs. John Dewit\*+  
 Mr. & Mrs. Richard A. Dinger  
 Mr. & Mrs. Richard T. Dix  
 Ms. Jeanne Dobes\*  
 Ms. Christine Doby  
 Mike & Lori Donlan\*  
 Mrs. Kathy L. Dotson\*  
 Mr. & Mrs. Daniel Dowling+  
 Mr. & Mrs. James A. Draves  
 Mr. & Mrs. Robert F. Dueweke  
 Ms. Nancy Hagle - Duffy  
 Greg & Karen Eason\*  
 Mr. & Mrs. Robert Eastman  
 Mr. & Mrs. Harry L. Eiferle III  
 Murray & Sharon Eisen+  
 Ms. Iris T. Elvig+  
 Mr. Jim Erwin & Ms. Diane Root\*  
 David & Jill Esau  
 Ms. Patricia A. Falerios  
 Mrs. Vera Farah  
 Miss Annette Fechik  
 Mr. Jack Fent\*

Mr. & Mrs. Paul A. Fernandez\*  
 Mr. & Mrs. Albert Fialka+  
 Mr. & Mrs. Craig R. Fiederlein+  
 Mr. Gregory D. Fiedler  
 Ms. A. Joan Fischer  
 Mrs. Billie Fisher+  
 Ms. Nora G. Fisher\*+  
 Mr. & Mrs. John M. Fives+  
 Mr. Leroy Flint & Ms. Frederica E. Muller  
 Ms. Andrea Zlatec Floden  
 Mr. & Mrs. Christopher J. Flores  
 Mr. & Mrs. Robert Florine\*  
 Mr. & Mrs. Michael B. Foote  
 Mrs. Margaret A. Foxworthy+  
 Dr. & Mrs. Chester A. Francke  
 Ms. Susan Franzen+  
 Thomas & Diane Fraser+  
 Lauren & Janet Friesen\*  
 Mr. & Mrs. James Gaver  
 Mr. & Mrs. Elie Ghattas  
 Ms. Lee Giacalone  
 Ms. Elisabeth Giegerich  
 Joseph & Roberta Goergen\*  
 Mr. & Mrs. Quentin D. Graham  
 Mr. & Mrs. Jerald D. Graves+  
 Ms. Diane Green  
 Mr. & Mrs. Eugene B. Griffel  
 Mr. & Mrs. Walter Griffin  
 Mr. & Mrs. Richard A. Griswold\*  
 Msgr. Richard Groshek\*  
 Mr. John Hackett & Mrs. Christy Walker-Hackett  
 Mr. & Mrs. Lawrence Hackett  
 Mrs. Donna Dodds Hamm\*+  
 Mr. Jeff Hannah & Ms. Nur Akcasu  
 Mr. & Mrs. Richard I. Hanson+  
 Mrs. Sarah E. Harper  
 Dr. Melanie A. Hartman & Mr. Gary C. Abusamra\*  
 Mr. & Mrs. John B. Hartranft\*+  
 Mr. & Mrs. Karl Harwood  
 Ms. Carol Hasenohrl  
 Dr. & Mrs. Abdul H. Hassan  
 Mr. & Mrs. Brian E. Hassett+  
 Ms. Carole D. Hecker  
 Mr. & Mrs. Eugene Heffelfinger\*  
 Mr. Richard L. Henry  
 Tammy, Dawn & Maya Hibbard-Wynam+  
 Mr. & Mrs. Brent Himes

Dr. & Mrs. Huseyin R. Hizioglu  
 Mrs. Lois D. Hodges  
 Mr. Dallas Hodgins & Mrs. Lois Cheesebro - Hodgins  
 Ms. Ernestine Holmes\*+  
 Ms. Thressa N. Horton\*  
 Ms. Beth E. Howarth+  
 Mr. Larry D. Howell+  
 Mr. & Mrs. Benjamin Howells  
 Mr. David M. Humphrey  
 Mrs. Michelle Humphreys  
 Mrs. Almeda B. Hunter  
 Mr. & Mrs. Jeffrey Hurand\*  
 Mr. & Mrs. Peter M. Hutchison+  
 Mr. & Mrs. Robert E. Iden  
 Mr. & Mrs. Robert J. Irwin\*  
 Mr. Herman Jackson & Family\*  
 Mr. & Mrs. Donald Jadwin  
 Dr. & Mrs. Robert E. James  
 Mr. & Mrs. Thomas S. James  
 Mrs. Virginia B. Jarrard\*+  
 Paula & Wendell Jennings+  
 William & Barbara Jennings+  
 Mr. Robert V. Jewell  
 Mr. & Mrs. Robert Johns\*  
 Mr. & Mrs. Earl D. Johnson  
 Ms. Jill Johnson  
 Mr. & Mrs. Paul H. Jokisch, Jr.  
 Ms. Mollie Jones\*  
 Mr. & Mrs. Paul Jordan  
 Dr. & Mrs. Larry Kage\*  
 Mr. Thomas Kalisz  
 Mrs. Debra Kalush\*  
 Mr. & Mrs. Adam Katzenberger  
 Ms. Janeen Keeley  
 Mr. & Mrs. James Kelly  
 Mr. & Mrs. Donald L. Kemp\*  
 Mr. & Mrs. Morris Kent\*+  
 Ms. Donielle Keyes  
 Ms. Lisa C. Kiacz  
 Ms. Marjorie Knack\*+  
 Dr. Gail Knapp\*  
 Miss Katie Kopec+  
 Mr. & Mrs. Joseph Kosik  
 Ms. Rosemary A. Kowalske\*  
 Mrs. Mary E. Kramer & Mr. Ian Young  
 Mr. & Mrs. Frank A. Krcmarik  
 Ray & Marie Kudej+  
 Mr. Paul Lafia\*  
 Mr. Miles Lam\*  
 Mr. & Mrs. John F. Lamb, Jr.

Mr. Stephen Landon\*+  
 Ms. Marian F. Langworthy  
 Mrs. JoEllen Larzelere\*+  
 Mrs. Ann Lauwers  
 Mr. & Mrs. James Lay  
 Mr. Raymond Lee & Ms. Pamela Lee  
 Stephen & Kathleen Leist  
 Mrs. Juldeen Lemke  
 Ms. Susanne J. Les & Mr. Tim Green+  
 Mr. Marvin Levey\*+  
 Mrs. Linda Lewellyn+  
 Mr. & Mrs. Larry Lifshitz+  
 Mr. & Mrs. Tom Lillie+  
 Dr. & Mrs. Edward T. Lock\*  
 Tiffany & Bob Lovett\*  
 Mr. & Mrs. Clifford Lutz  
 Mr. & Mrs. Douglas W. Lynn  
 Mr. & Mrs. Laurence E. MacDonald+  
 Mr. & Mrs. Marshall G. Macfarlane  
 Dr. & Mrs. Michael Macksood  
 Ms. Elizabeth Magyar+  
 Ms. Lucille M. Martel  
 Mr. & Mrs. David M. Martin  
 Mr. Michael Martin & Mr. Bryan Paris  
 Mr. & Mrs. Michael A. Mason+  
 Ms. Carol Masse+  
 Mr. & Mrs. Daniel Maynard  
 Mr. Robert McAllister & Ms. Bobbie Chamberlin & Diamond+  
 Dr. & Mrs. Gordon McClimans  
 Mr. Jeremy McConnell\*  
 Mr. & Mrs. Roderick McDonald\*  
 Mr. & Mrs. Larry McDonough\*+  
 Mr. Raymond A. McKee & Ms. Shirley Eason\*  
 Mr. & Mrs. Charles R. McKone\*  
 Dr. & Mrs. Kim P. McPheeters\*+  
 Mr. Stacy Merrill  
 Mr. & Mrs. James M. Messmore  
 Mr. & Mrs. James Mikulski  
 Mrs. Mary L. Miller  
 Mr. Stephen Miller & Ms. Jeana Rossie-Miller\*  
 Mr. Jack D. Minore+  
 Mr. & Mrs. Robert W. Misekow  
 Dr. & Mrs. Behrouz Moghtassed

Mr. Richard Monkaba+  
 Mrs. Betty Mooi  
 Mrs. Patricia J. Moore\*  
 Mr. & Mrs. Steward A. Moore+  
 Mr. Denver Morris & Ms. Diane L. Boegner+  
 Mr. & Mrs. John D. Mott  
 Mrs. Alice R. Murphy  
 Mr. & Ms. Peter Murphy\*+  
 Mr. & Mrs. George Nassif\*  
 Mr. & Mrs. David Neil  
 Mrs. Jeanette Neu & Mr. Jesse Ballew+  
 Ms. Joyce Nichols  
 Mr. & Mrs. Charles D. Nielsen  
 Mr. & Mrs. Thomas W. Nobles+  
 Mrs. R. Bruce Notman  
 Mrs. Georgeana Nowoc  
 Mr. & Mrs. Phillip W. Noyle+  
 Mr. & Mrs. L. Nathan Oaklander+  
 Mr. & Mrs. Patrick O'Sullivan  
 Mr. David Owen-Smith  
 Mrs. Kaye Panchula  
 Ms. Virginia Panek\*  
 Mr. & Mrs. David L. Panzla  
 Ms. Mary Parks  
 Mr. & Mrs. Gordon Parnes+  
 Mr. & Mrs. Tim Parrott\*  
 Ms. Marcia A. Pavkovich\*  
 Ms. Jeanne Pepper & Mr. Thomas Herman  
 Mr. & Mrs. Robert M. Pestronk+  
 Mrs. Sharon A. Peterson  
 Mr. & Mrs. David Phillips  
 Mr. Richard Philp+  
 Dr. W. Archibald Piper  
 Mr. & Mrs. Jeremy Piper+  
 Mr. & Mrs. Mark Piper\*  
 Mr. Franklin Pleasant\*  
 Mr. & Mrs. James Plouffe\*  
 Mr. Charles Ploughman  
 George & Suzanne Popovich  
 Mrs. Willie J. Powell+  
 Mrs. Dilys A. Price+  
 Dr. & Mrs. Jack R. Price+  
 Mr. & Mrs. Steve Rabatin\*  
 Dr. Paul J. Racine  
 Betty & Richard Ramsdell  
 Richard & Ramona Ranville\*+  
 Mr. & Mrs. Donald E. Rash  
 Mrs. Ransom Richardson+

Mrs. Marjorie Rideout  
 Mr. Gregory S. Rinehart  
 Mr. & Mrs. Randal J. Roat\*  
 Frank & Linda Roberts+  
 Ms. Mildred L. Robinson+  
 Mr. Robbie R. Robinson  
 Mr. Donald Rockwell  
 Mr. & Mrs. George Rosenberger+  
 Mr. & Mrs. Brian Royce+  
 Mr. & Mrs. Ronald E. Royer+  
 Ms. Addie Royston\*+  
 Mr. & Mrs. Paul Rozyccki+  
 Dr. & Mrs. Walter Z. Rundles, Jr.  
 Ms. Carol F. Rush  
 Mr. Thomas J. Ruth  
 Mr. Ira A. Rutherford  
 Miss Elisabeth Saab+  
 Mr. & Mrs. Frank A. Sanders  
 Richard & Katherine Saunders  
 Mrs. Amina Sayyid  
 Mr. Nathan Schafer  
 Mr. Ronald J. Schmitz\*  
 Mr. & Mrs. Derald Schnepf+  
 Drs. Heinz & Alice Schwarz  
 Mr. & Mrs. Mark A. Schwartz+  
 Mr. & Mrs. David F. Seide  
 Mr. & Mrs. Robert L. Segar\*  
 Ms. Suzanne Selig  
 Mrs. Albert Serra  
 Mrs. Patricia A. Sheehy  
 Mrs. Marie Sheppard+  
 Mr. & Mrs. Charles H. Sheridan\*  
 Dr. Richard & Rose Marie Shick  
 Dr. Janice Shimoda+  
 Mr. & Mrs. Sheldon Siegel+  
 Ms. Margaret Simen\*+  
 Mr. & Mrs. Richard Skaff\*  
 Mr. & Mrs. Thomas Skunda\*  
 Mr. & Mrs. Eric Smith\*+  
 Mrs. Germaine D. Smith  
 Ms. Lynn Smith+  
 Ms. Sheila R. Smith+  
 Dr. & Mrs. Tom Spademan\*  
 Ms. Shelley R. Spivack+  
 Mr. & Mrs. Michael Spleet  
 Mr. & Mrs. Benjamin T. Stanley+  
 Dr. Morton & Lois Stanley+  
 Mr. & Mrs. James E. Streby  
 Ms. Joanne Sullenger  
 Lee & Jean Sutherland\*  
 Mr. & Mrs. Douglas C. Swanson\*

Mr. & Mrs. Alfred R. Talbot  
 Dr. & Mrs. Johannes Tall  
 Mr. & Mrs. Ken Tankersley  
 Mr. & Mrs. Robert M. Teunion  
 Mr. & Mrs. Douglas Theodoroff\*  
 Mr. Robert R. Thomas  
 Mr. Dave Thompson  
 Miss Susan M. Thompson  
 Mr. & Mrs. Robert J. Timyan  
 Mr. & Mrs. Jeffrey D. Tippet  
 Mr. & Mrs. Paul N. Torre  
 Mrs. Linda Tracy-Stephens\*+  
 Miss Virginia M. Tripp  
 Mr. Arvid B. Tronnes+  
 Mr. & Mrs. Robert Tucker+  
 Dr. & Mrs. Allen F. Turcke  
 Miss Gunta Sue Turks\*  
 Mr. & Mrs. Richard Van De Water  
 Ms. Martha VanBolt\*+  
 Mr. & Mrs. Alexander B. VanDuyne  
 Mrs. Linda Vanston\*+  
 Mrs. Constance J. Veasley+  
 Mrs. Angela Verdoux+  
 Mr. Byron W. Voorheis III  
 Mr. & Mrs. A. Paul Walling  
 Mr. & Mrs. John Walter  
 Ms. Jane Walworth+  
 Dr. & Mrs. Stevens F. Wandmacher\*  
 Mrs. Janet Warren+  
 Mrs. Diane Warstler  
 Dr. & Mrs. Robert M. Weber  
 Ms. Susan M. Wedda & Ms. Carol J. Ferguson+  
 Rev. William F. Wegher  
 Mr. Charles Weinstein+  
 Mr. & Mrs. Jon Wheeler+  
 Mrs. Beverly A. Willing  
 Ms. Ruth Winter & Mr. Tom Thibault  
 Mr. & Mrs. Raymond A. Wise  
 Mr. Dale F. Wolfgram\*+  
 Ms. Wynne C. Wood  
 Mr. Patrick Yankee+  
 Mr. & Mrs. Butch Yerian+  
 Mr. & Mrs. Dennis W. Younger  
 JoElla Pyles Zalewski\*  
 Mr. & Mrs. Wolf Zientek+  
 Ms. Trish M. Zito-Smith  
 Mrs. Darlene R. Zupko - Ward\*

## Family

(\$40 – \$49 annually)  
 Mr. & Mrs. Joseph Abbott+  
 Mrs. Susan Acton  
 Ms. Jacqui Addison  
 Mr. & Mrs. Mark Alexander  
 Mrs. Mary Alexander  
 Mr. & Mrs. Larry Allen  
 Ms. Lynn K. Allen & Mr. Robert Cox+  
 Mr. & Mrs. Marvin L. Allen  
 Mrs. Cynthia Alvado  
 Ms. Marilyn M. Alvey  
 Mrs. Elizabeth Amato  
 Mr. & Mrs. Michael T. Amberg+  
 Mr. Tom Amie & Ms. Pennie A. Meyers+  
 Mr. Frank Amrhein+  
 Mrs. Debbie Anderson  
 Dr. Jami Anderson  
 Mr. Michael Andrews  
 Mr. Chris Apperson  
 Mr. & Mrs. Bob Applegate\*  
 Mr. & Mrs. Edward P. Arends  
 Mrs. Sabrina Armstrong  
 Ms. Julie Atchley  
 Mr. & Mrs. Robert Atkinson+  
 Mr. & Mrs. Robert Aurand  
 Mr. & Mrs. Douglas D. Austin  
 Mr. & Mrs. David G. Babieracki+  
 Mr. John Bach & Ms. Mary Alice O'Malley+  
 Mr. Bill Bader  
 Mr. & Mrs. Calvin Baker  
 Mr. Carroll G. Baker & Ms. Kimberly Roberson  
 Mr. & Mrs. Roger Baldwin  
 Mr. & Mrs. Chris Balog  
 Mr. Dave Barlow  
 Mr. & Mrs. David Barr & Anna  
 Mrs. Barbara Barrell  
 Mr. & Mrs. Grant B. Barrett  
 Mr. & Mrs. David Bartels  
 Mrs. Frances A. Bartunek+  
 Mrs. Liza Baylis  
 Mrs. Inge Beardslee  
 Ms. Lora D. Beckwith+  
 Ms. Kathleen Beebe-Zittel  
 Mr. & Mrs. Donald L. Bell  
 Mr. Corey Bellomo  
 Mr. & Mrs. Ben Benjamin  
 Dr. David S. Bertolotti, Jr.

Ms. Edna R. Bick & Mr. John  
Helsom+  
Mr. Michael A. Bills+\*  
Mr. & Mrs. Timothy Blazejewski  
Mr. & Mrs. Dale M. Blondin  
Mr. & Mrs. Thom Bohnert+  
Mr. & Mrs. Joseph V. Bonadies+  
Ms. Andrea Bonkowski  
Mr. & Mrs. Bernard Borden  
Ms. Julie M. Borst-Mabbitt  
Mrs. Malissa A. Bossardet  
Ms. Michele Bourdo  
Mrs. Judith I. Bowren+  
Mrs. Susan Boyden  
Mr. & Mrs. David S. Boze  
Ms. Sue Bradley & Mr. Bill  
Schnaidt  
Ms. Camille A. Brewer\*  
Mr. Mark Brewer  
Mr. & Mrs. Kelly J. Brisbin  
Tom, Candy & Kyle Brisendine  
Mr. David Broadworth  
Mrs. Danielle Brown  
Mrs. Colette L. Bryan  
Ms. Nancy Bubnar  
Mr. & Mrs. Norman E. Bullock  
Ms. Christine Burgess+  
Ms. Connie Burgess  
Mr. & Mrs. James Burgess\*  
Mr. & Mrs. James J. Burkart  
Mrs. Catherine W. Burke\*+  
Mr. & Mrs. Gerard Burnash  
Mr. & Mrs. Douglas Burroughs+  
Mrs. Debbie Buterakos  
Mr. & Mrs. Frank R. Butz+  
Ms. Janet Cameron+  
Ms. Carol Campbell  
Ms. Melissa Campbell  
Mr. Brent Cardani+  
Mr. & Mrs. Robert Carlin+  
Mr. & Mrs. Stephen M. Carlson  
Robert & Phyllis Carter+  
Mrs. Lynda Carto\*  
Dr. Rose Casement &  
Ms. Hannah Furrow  
Ms. Wendy Caverly  
Mr. & Mrs. Michael Cerne-  
Murphy  
Mr. & Mrs. Michael Chaffee  
Mrs. Jan Champion  
Mr. & Mrs. Tom Cheek  
Mr. & Mrs. Lee E. Chillik

Ms. Abigail I. Chou+  
Mr. & Mrs. Dan Christie  
Mr. & Mrs. Jeffrey Church  
Mr. & Mrs. Darwin Clark  
Mr. & Mrs. Heith Clark  
Mrs. Lauri E. Clark  
The Clerkley Family  
Mr. Mark Coleman  
Mr. & Mrs. Sylvester Collins+  
Mrs. Nancy J. Cook\*  
Mr. & Mrs. Michael E. Cooney\*  
Ms. Patty Cooper  
Virgil & Sheryl Cope  
Mrs. Sue Cornell\*  
Mr. & Mrs. Robert Courneya+  
Mrs. Joyce Coyne  
Mr. & Mrs. Gordon Crandell  
Marcy & Christianne Crane  
Mr. & Mrs. Ivan A. Crawford  
Mr. James Crawford &  
Ms. Gloria Kaster+  
Mr. & Mrs. John H. Crawford+  
Mr. & Mrs. Douglas C. Cripps  
Mrs. Jean L. Cronin  
Mrs. Chrysa C. Cronley  
Mr. Christopher Cryderman  
Ms. Helen A. Curran &  
Miss Cleosia Curran  
Ms. Traci Currie  
Mrs. Cynthia J. Curtis\*  
Mr. & Mrs. Daniel C. Custack+  
Mr. & Mrs. Edwin D. Custer &  
Family  
Mrs. Joanne Czarnota  
Mr. & Mrs. Matt Daniel  
Mr. & Mrs. Dennis Davis+  
Mr. Scott J. Davis\*  
Ms. Dede DeCamp  
Ms. Evelyn DeForest  
Mr. & Mrs. Laurence B. Deitch  
Miss Jamie DeVoe  
Mr. & Mrs. Chris DeWolfe  
Mr. & Mrs. Norm Dickinson  
Maynard & Carol Dickinson  
Mr. & Mrs. Chris Dixon  
Dr. Quincy Dobbs  
Mrs. Sherry Dodge &  
Mr. Matthew C. Schlinder  
Mrs. Geraldine C. Donaldson  
Ms. Beth Doxey  
Mr. Dale Doyen  
Mr. & Mrs. Dennis Doyle

Ms. Gina Drago  
Mr. & Mrs. James H.  
Drummond+  
Ms. Christine Dugas  
Ms. Mary M. Dugas  
Mr. Chris & Dr. Jean Dundas  
Mr. Thomas Dunseth  
Mr. B.J. Dworin  
Ms. Linda Dyball  
Mr. & Mrs. Anthony Eason  
Ms. Elizabeth Eby & Mr. Douglas  
Tobias  
Mr. Gregg Eddy+  
Mr. & Mrs. Antwan Edson+\*  
Dr. Tracy Edwards+  
Mr. Henry C. Eggleston  
Mr. & Mrs. Wilbert Elbert+  
Mr. & Mrs. Dale Elledge  
Ms. Jennifer Ely  
Mr. & Mrs. Dale Emery  
Mr. & Mrs. Ron Emery  
Mrs. Kimberley Emmert+\*  
Ms. Rita Fagan\*  
Mr. & Mrs. David Falting+  
Mrs. Mary S. Felix+  
Mr. & Mrs. Frederick E. Ferguson  
Mr. & Mrs. Todd Ferguson  
Ms. Connie Feuerstein  
Mr. & Mrs. Robert Fey  
Rev. & Mrs. Martin Field  
Mr. & Mrs. Wade Finney  
Mr. & Mrs. Dan Fisher  
Ms. Lori Fisher\*  
Mr. & Mrs. Howard Fishkin+  
Mrs. Theresa Fletcher+  
Mr. & Mrs. Dan Fondren  
Mr. & Mrs. Richard Foor  
Mr. & Mrs. Michael Foran  
James & Patricia Ford+  
Ms. Kim Forster  
Mr. Richard W. Fortner+  
Mr. David Foster  
Mr. & Mrs. Tim Foster  
Mr. & Mrs. Joseph P. Foust+  
Ms. Teresa Fowler  
Ms. Lori France  
Mr. & Mrs. Mark Freeman  
Ms. Suzanne French &  
Mr. Dennis Lenz  
Mrs. Kay Fritzsching  
Dr. Donna Fry  
Ms. Amy Fugate

Dr. & Mrs. David A. Fultz+  
Ms. Joyce M. Gadola  
Mr. & Mrs. Paul Gallinat, Jr.  
Mr. & Mrs. Jason Galvas+  
Mr. Ken Galvas\*  
Ms. Cathy Ganssley  
Mr. & Mrs. Regional Garland  
Ms. Liza Garza  
Ken, Rae, & Jacob Gatenby  
Mr. & Mrs. Gary Gebhardt+  
Ms. Kathleen George+  
Mrs. Kimberly J. Giaccina  
Ms. Glenda Gibbs  
Ms. Jeanne & Kathryn Gifford  
Mr. Scott Gifford & Ms. Jonquil  
Bertschi  
Mrs. Terri Gillespie  
Ms. Teresa Gillotti  
Mr. & Mrs. Alan Ginsburg  
Douglas & Susan Goering  
Mr. & Mrs. Michael Goetz+  
Mr. & Mrs. Gregory Gohl  
Ms. Donna Gohs  
Mr. & Mrs. Paul Gonzales\*+  
Ms. Amy Gottlieb  
Ms. Pamela Graham  
Mr. & Mrs. Robert Graham  
Mr. & Mrs. Ronald J. Gregor+  
Mr. & Mrs. Robert Gremel  
Ms. Barbara Griffith-Wilson  
Mr. Greg Gromek  
Ms. Kim Grossmann\*  
Mr. & Mrs. Mark Guith  
Ms. Linda Gulley  
Mr. & Mrs. Timothy Gundlach+  
Mr. & Mrs. Christopher Haack  
Ms. Valerie Haight  
Ms. Kara Hajek  
Mr. & Mrs. Jim Hallem+  
Mr. Gerrat J. Halley  
Mrs. Maureen Halligan  
Dr. & Mrs. Franklin W. Hamilton  
Mr. & Mrs. John Haner  
Mark & Rebecca Hanner  
Mrs. Irene H. Hanson+  
Mrs. Janice M. Hanson\*+  
Mr. & Mrs. Donald E. Harbin+  
Mr. & Mrs. Willie J. Harden  
Mrs. Janet Harris  
Ms. Jenny Harris & Ms. Pat  
Cooney  
Ms. Julie Harris

David & Donna Hart+  
Mr. & Mrs. David Harwood  
Mr. Henry Hatter & Ms. Barbara  
Hatter  
Mrs. Shirley Hauch  
Ms. Yutha M. Hayes\*+  
Mr. & Mrs. Neal Hegarty  
Ms. Mary Heinz  
Mr. & Mrs. Edward G. Henneke  
Miss Julia Hennig  
General & Mrs. John B. Henry, Jr.  
Mr. & Mrs. John B. Henry III  
Ms. Ann Hensley  
Ms. Julie Hester  
Mr. Tom Heyworth  
Mr. & Mrs. Alan Himelhoch  
Mr. & Mrs. Jeffrey J. Himelhoch  
Mr. & Mrs. Theodore S.  
Himelhoch  
Ms. Anne L. Hitt & Mr. Curtis  
Wilkerson  
Mr. & Mrs. Robert Hockin  
Mr. & Mrs. Joel Hoitenga  
Mr. & Mrs. Robert G. Hollar+  
Mr. & Mrs. Michael Holloway  
Mr. John Homer+  
Ms. Barbara H. Horcha &  
Mr. William Cross+  
Ms. Lori Horcha & Family  
Mr. & Mrs. Matt Horcha  
Mr. & Mrs. Ronald M. Horton+  
Mr. & Mrs. Byron Hosmer  
Mr. & Mrs. James Hotary\*+  
Mr. & Mrs. Dennis House  
Mr. & Mrs. Gerald House  
Mrs. Sara Howes  
Mr. & Mrs. David Howlett  
Bridget & George Hughes+  
Mr. Michael Hurley &  
Mr. Thomas Bryant  
Mr. & Mrs. Christopher Iden+  
Mr. & Mrs. Michael J. Ireland-  
Munley  
Mr. & Mrs. Phil Jackson  
Mr. & Mrs. Stephen Jacob  
Mr. Steve Jadwin  
Mr. & Mrs. Jeff Johnson\*  
Mr. & Mrs. Kenneth Johnson+  
Ms. Patricia Johnson  
Mr. Ryan Johnston  
Ms. Bernadette Jolly & Family

## Development

Mr. Douglas Jones & Ms. Donna Hatfield  
 Mrs. Kimberlie Jones  
 Mr. & Mrs. Myrton N. Jones  
 Mr. & Mrs. Randy Jones+  
 Mr. & Mrs. Keith Joseph  
 Ms. Mary Kachman  
 Mr. & Mrs. Ken Kaiser  
 Dr. & Mrs. Larry I. Kassel+  
 Dr. & Mrs. Sunil K. Kaushal  
 Mr. & Mrs. Robert Keel+  
 Mr. Sam Kelchner & Mrs. Susan Marr\*  
 Mr. & Mrs. Michael J. Kelly  
 Mr. William O. Kelly III  
 Mr. Ryan Kelsey  
 Mrs. Jana L. Kerr  
 Mrs. Bao Tran Khuc  
 Mr. & Mrs. George Kiehler  
 Mr. & Mrs. John C. Kippe+  
 Mr. & Mrs. Adam Kline  
 Mr. & Mrs. Timothy H. Knecht+  
 Miss Katherine Knight+  
 Mr. & Mrs. Robert Knoop  
 Mr. & Mrs. William Koryciak  
 David & Tracy Koscinski  
 Mr. & Mrs. Dan Koskinen  
 Ms. Charlene A. Kowalski\*  
 Ms. Jacquelyn Kozlowski  
 Mrs. Katie Krane  
 Mr. Kenneth C. Kreger & Mr. Timothy M. Morgan+  
 Vincent & Mechelle Kuchar  
 Mr. & Mrs. Thomas Kudza  
 Mr. & Mrs. John LaForge  
 Mr. Larry Lage & Mrs. Paddy Kutchev+  
 Mr. & Mrs. John Lamb\*  
 Mr. & Mrs. Ron Lammy  
 Mr. & Mrs. Shannon Langley\*  
 Ms. Dorothy Latchana  
 Mrs. Maurice Latimer  
 Mr. & Mrs. David Lattie  
 Mr. Stephen Lazzio  
 Mr. & Mrs. Steve LeBel  
 Mr. & Mrs. Cyril Leder  
 Mr. & Mrs. Glenn LeFeber  
 Mr. & Mrs. James T. Legacy  
 Mr. & Mrs. James LeGendre+  
 Mrs. Victoria Leonard+  
 Mrs. Alice Lethbridge\*  
 Dr. & Mrs. David Levenson+\*

John & Chrys Lewis  
 Mr. & Mrs. Mark Lewis & Family  
 Mr. & Mrs. Randy S. Libby  
 Ms. Angela Lichlyter  
 Mr. & Mrs. George I. Liljeblad+  
 Mr. & Mrs. Ray Linton+  
 Ms. Mariam Listock  
 Mr. & Mrs. David Littmann  
 Ms. Lateka Lockridge  
 Ms. Janet L. Lorch & Mr. Darryl G. Baird  
 Mr. & Mrs. David E. Lossing+  
 Mrs. Melissa Louckes & Family  
 Mr. & Mrs. David P. Lucky  
 Mr. Garry Mabry  
 Dr. & Mrs. Richard S. Mach+  
 Mr. & Mrs. Richard A. MacKenzie, Jr.+  
 Miss Janet Macksood  
 Mr. & Mrs. Thomas A. Macksood\*  
 Mr. John Mahey  
 Ms. Carma Mainer  
 Mr. & Mrs. Tony Mainprize+  
 Mr. & Mrs. Aaron Makrouer  
 Mr. & Mrs. Jeffery W. Mansour+  
 Charles & Sue Martell  
 Mr. & Mrs. Brian Martin\*  
 Mr. & Mrs. Thomas D. Martin\*  
 Colette & Eric Marx+  
 Ms. Sue Matlock+  
 Ms. Frances P. Maul-Dees  
 Mr. & Mrs. Chris McAleer  
 Dr. Eureka McAllister+\*  
 Mr. & Mrs. John R. McBride  
 Mr. Jack McCauley\*  
 Mr. Jeff McClintock  
 Mr. Chris McDonald  
 Mr. Patrick McDougall+  
 Dr. & Mrs. Paul D. McEwen+  
 Mr. Timothy McGonagle  
 Mrs. Jeannine R. McKenzie  
 Mr. & Mrs. Muir McKerracher  
 Mr. & Mrs. Joseph McLearn+  
 Ms. Bridget McMillan\*  
 Mr. Richard McNally+  
 Mr. & Mrs. Lawrence M. McQuigg+  
 Mr. & Mrs. William C. McRorie+  
 Dr. Juan E. Mestas  
 Dr. & Mrs. William J. Mestrezat  
 Mr. & Mrs. Rick Middleton

Mr. & Mrs. Thomas L. Mierta  
 Mr. & Mrs. Toby Millard  
 Mr. & Mrs. William K. Miller\*  
 Mr. & Mrs. Robert D. Mills  
 Ms. Juliet Minard & Mr. Scott Stensaas  
 Mr. & Mrs. Frank S. Mishina+  
 Mrs. Ruth A. Mitchell  
 Mrs. Tuli Mohanty  
 Mrs. Tamara D. Moldenhauer\*  
 Mrs. Kristin Molzon  
 Mr. & Mrs. Andrew Morris  
 Mr. Larry D. Morrisett+  
 John & Pat Mucha  
 Mrs. Patricia R. Mulanix  
 Mr. & Mrs. Edward P. Myers+  
 Mrs. Myrna H. Myers  
 Mrs. Regina Myers  
 Mr. & Mrs. Walter Nagel  
 Mrs. Sumita Nagpal  
 Mr. Erik Naugle & Ms. Karin Naugle  
 Ms. Lynn Nemitz  
 Dr. & Mrs. Jack Nettleton+  
 Mr. & Mrs. Thomas F. Niaz  
 Ms. Janice Nieuwenhuis\*+  
 Mr. & Mrs. Richard C. Noble  
 Mr. & Ms. Bruce Norman+  
 Mrs. Erin Onweller  
 Mr. & Mrs. Andrew Ordiway  
 Mr. & Mrs. Tom R. Pabst  
 Mr. & Mrs. Thomas Pacconi  
 Dr. & Mrs. Vivek Palavali  
 Mr. & Mrs. David W. Palmer  
 Craig & Charlotte Parker  
 Mr. & Mrs. Tony Pasko  
 Ms. Deborah Pauly  
 Mrs. Leslie Pearce+  
 Mr. & Mrs. Kenneth S. Pelc  
 Ms. Janice K. Peraino  
 Ms. Judith Perez+  
 Rene & Jackie Peterman  
 Mr. & Mrs. Carl Peterson  
 Ms. Heidi Peterson & Family\*  
 Ms. Dorothea H. Phipps\*  
 Mr. & Mrs. Alfred Piegdon+  
 Mr. & Mrs. Thomas G. Pierson  
 Mr. & Mrs. Mark Piper+  
 Ms. Pam Pittman  
 Mr. & Mrs. Harold Plotnik\*  
 Dr. & Mrs. Mark Plucer+  
 Mr. Avery Poe

Ms. Kate Pohjola & Mr. Ben Sauter  
 Ms. Kimberly Pollard  
 The Pollard Family  
 Ms. Mary Powell  
 Ms. Frances J. Price  
 Mr. & Mrs. Jeff Price  
 Mr. & Mrs. James D. Proffer+  
 Ms. Brittany Pruneau  
 Mr. & Mrs. Anthony Puidokas  
 Mr. Lee Purdy  
 Dr. Heidi Putt  
 Mr. & Mrs. William Pyles  
 Mr. & Mrs. Joseph Rado\*+  
 Ms. Evelyn Raskin & Mr. James Hilty  
 Mr. & Mrs. Joseph Rau  
 Ms. Jeanette M. Raysin  
 Ms. Carol Raznik  
 Mrs. Olga Recio-Carter  
 Ms. Whitney Reddy\*  
 Mr. Bradley Reese  
 Ms. Lisa Reinert+  
 Dr. Shawn Reiser  
 Mr. & Mrs. Melvyn R. Rettenmund  
 Mrs. Dorothy Richardson  
 Mr. & Mrs. Michael P. Richardson  
 Mr. & Mrs. John L. Riegle, Jr.  
 Mr. David L. Roach+  
 Mr. & Mrs. Robert Roach & Alexis  
 Ms. Theodosia Robertson+  
 Ms. Clara V. Robinson  
 Mr. Donald R. Robinson & Family  
 Mr. & Mrs. Jack Robinson  
 Ms. Patricia Rockafellow\*  
 Ms. Theresa J. Rodgersen  
 Mr. & Mrs. Ahelardo Rodriguez\*  
 Mr. & Mrs. Alan Rohde  
 Mrs. Megan Rolf  
 Mr. Chad Rose+  
 Mr. & Mrs. Paul Rowley  
 Michael Goldman & Shawn Royer+  
 Mrs. Linda Rudel  
 Mrs. Joanie Rusinek  
 Ms. Joyce Russell  
 Mr. & Mrs. Michael Rutherford  
 Mr. & Mrs. Kenneth L. Rutter  
 Mr. & Mrs. Jack Ryan  
 Mrs. Martha Ryan\*  
 Mrs. Geraldine C. Ryle\*

Mr. & Mrs. Earl G. Santa  
 Ms. Linda M. Savage & Mr. Michael P. Sherry\*  
 Mr. & Mrs. Craig Schaaf+  
 Mrs. Maureen E. Schlott\*  
 Mr. & Mrs. Mark Schmidt  
 Mrs. Karen Schneider & Mr. Leonard Meizlish  
 Mrs. Mary L. Schniers  
 Mr. & Mrs. Brian Scieszka+  
 Mr. & Mrs. Michael J. Seager & Ms. Erin Seager+  
 Ms. Benny Seide  
 Mr. Micheal Sewell  
 Mr. Steve Shanks  
 Mr. & Mrs. Matthew Sharai  
 Mrs. Dana Shaver  
 Mr. & Mrs. Nicholas J. Sheeran+  
 Mr. & Mrs. Thomas Sheroski  
 Mr. & Mrs. Brent A. Shook  
 Ms. Patrice Shriver\*+  
 Dr. & Mrs. Ronald E. Silverman+  
 Ms. Kathleen Simmons  
 Mr. & Mrs. Christopher C. Singer  
 Mr. John J. Mrozik & Ms. Heather Sisto+  
 Mr. & Mrs. David Smallidge+  
 Mr. & Mrs. D. James Smith  
 Mr. & Mrs. Daniel Smith+  
 Ms. Julie A. Smith & Family  
 Dr. & Mrs. Scott T. Smith  
 Mr. & Mrs. William Somers  
 Mrs. Ellen P. Sparks  
 Ms. Debbie Stabenow\*  
 Mr. & Mrs. David Stack  
 Ms. Jill Stall  
 Mr. Robert F. Stanisch+  
 Mr. & Mrs. David L. Stanley+  
 Mr. William F. Stanley  
 Mr. & Mrs. Jon Stavros  
 Mr. & Mrs. Hugh Stelter  
 Mr. & Mrs. Charles A. Stewart  
 Mr. & Mrs. Lawrence Stewart+  
 Ms. Jessica Sting  
 Mr. & Mrs. Peter Stoyanoff+  
 Paul & Kimberlee Streby  
 Mrs. Krista Strong+  
 Mr. & Mrs. David Stutso  
 Mr. & Mrs. Clark Sullivan  
 Mr. Michael Dingman & Mrs. Susan Sumner Dingman+  
 Ms. Amy Surles-Rosario+



Mrs. Phyllis Sutherland  
 Ms. Phyllis Sykes\*+  
 Mr. James Taggart  
 Mr. & Mrs. Mark Tanner  
 Mr. & Mrs. Massoud Tavakoli  
 Mr. & Mrs. James Taylor  
 Ms. Suzan K. Taylor  
 Ms. Toyia Terry  
 Ms. Leslie Thalhammer  
 Judge Michael Theile  
 Mr. Eric P. Thomas  
 Len & Sharon Thomas  
 Mr. & Mrs. Randy Thomas  
 Mr. & Mrs. Michael Thompson  
 Mr. Thomas Thompson  
 Mrs. Mary Kay Thompson-Kelly &  
 Mr. James Kelly  
 Ms. Tina Timmons & Mr. Michael  
 Timmons  
 Mrs. Celina Tomas  
 Mr. & Mrs. James E. Tomblinson+  
 Mr. & Mrs. John Tosto  
 George & Jean Toth  
 Mr. & Mrs. William Traylor  
 Mr. & Mrs. Brad Trees  
 Mr. & Mrs. Bruce Trevithick+  
 Dr. & Mrs. Charles Tritschler  
 Mr. & Mrs. Robert Turley  
 Mr. & Mrs. Lance Valentine  
 van Woudenberg Family  
 Mr. Barian Vaughan  
 Mr. & Mrs. Thomas Verhelle  
 Ms. Vickie View  
 Mr. Robert C. Vince  
 Mr. & Mrs. Carlo Vitale  
 Mrs. Dana Voorheis  
 Rev. Tom & Mrs. Beth  
 Wachterhauser  
 Mr. David Wahl & Ms. Helen  
 Constan+  
 Mr. & Mrs. Norman Wahlfors, Jr.  
 Mr. James Waite  
 Ms. Jeannette M. Walker  
 Mr. & Mrs. Dayne Walling  
 Mr. & Mrs. Gerald L. Walters  
 Mr. & Mrs. Dale Warden  
 Mr. & Mrs. William S. Warren  
 Mr. & Mrs. Henri S. Watkins, Sr.  
 Mr. & Mrs. Chris Waxweiler  
 Dr. Brandon Welker  
 Mrs. Karen A. Wells\*  
 Ms. Tracey Whelpley+\*

Mr. Scott Whipple\*+  
 Ms. Barbara B. White\*  
 Ms. Sandy White  
 Mr. & Mrs. Larry Wilkinson  
 Mrs. Sherri Willett\*  
 Mr. & Mrs. Jack E. Williams  
 Ms. Teresa Williams  
 Mr. & Mrs. David Wilson+  
 Mr. & Mrs. Robert Winter  
 Mr. Randolph J. Wise  
 Mr. & Mrs. John Wishart &  
 Mr. Robert Wishart  
 Mr. & Mrs. David Withey\*  
 Mr. Daniel C. Wolf, Sr.  
 Mr. Craig S. Wollack  
 Mr. & Mrs. Dale Wolverton+  
 Mr. & Mrs. Robert V. Woods  
 R. Woolworth  
 Mr. & Mrs. Daniel Wozniak+  
 Ms. Sharon Wright  
 Mr. Matt Wyneken  
 Mrs. Yu Yang  
 Ms. Tina Yokosawa  
 Mr. Donald York  
 Ms. Jayne Young  
 Ms. Mona Younis\*  
 Mr. & Mrs. Paul Zang  
 Ms. Patty Zawadzki  
 Mr. & Mrs. Joseph Zayac  
 Mr. & Mrs. Jon Ziegler  
 Mr. & Mrs. Mersed Zuniga

#### Individual

(\$30 – \$39 annually)

Ms. Kay Adams+  
 Mrs. Sandra Adkins  
 Mr. Alan Agree  
 Mrs. Nancy Alacheff  
 Mrs. Laura Alderman  
 Ms. Judith Alexander+  
 Ms. Patricia Alexander+  
 Ms. Myra F. Alliston  
 Mrs. Catherine D. Amboy  
 Mr. Ellery A. Amey  
 Mrs. Julianne Anas  
 Mrs. Joanne Anderson  
 Ms. Phyllis Anderson+  
 Mr. John Archangeli  
 Mr. Jayme R. Armstrong  
 Ms. JoAnn M. Arnold  
 Mrs. Jodi Arnst  
 Ms. Carol Azizian\*

Mrs. Linda E. Baker  
 Mrs. Carmen M. Bammert  
 Ms. Arbutus Barcey  
 Ms. Leanne Barkus  
 Ms. Amanda Barnes+  
 Ms. Judith M. Barrette  
 Ms. Ida B. Barron  
 Ms. Donna Bauer+  
 Mrs. Alice Bearup  
 Ms. Linda Bedtelyon  
 Mrs. Doris Beebe+  
 Ms. Christina Bellows  
 Ms. Patricia L. Bernard  
 Ms. Shirley Berney  
 Mrs. Christie Binelli  
 Ms. Linda Bjaland  
 Ms. Shirley I. Blair  
 Ms. Judy Bloodworth  
 Ms. Mary Bluteau  
 Ms. Sue Bobalik  
 Ms. Kimberly A. Bodette  
 Ms. Doris Bombel  
 Mrs. Connie Borrie  
 Ms. Donna Boshell  
 Ms. Lynette Boswell  
 Mrs. Doris E. Brandt  
 Mrs. Doris Bravender  
 Miss Jeanette Brayan  
 Ms. Arlene A. Breczinski+  
 Mrs. Carole A. Brender+  
 Miss Elizabeth E. Brenner+  
 Mrs. Lynn Brewington  
 Ms. Tracy Brewington+  
 Miss Dorothy M. Broomfield  
 Ms. Ellen Brothers  
 Ms. Laura Brown  
 Ms. Peggy Brunner+  
 Mr. Matthew Brunzlick+  
 Miss Karen Bryant  
 Ms. Judith A. Buffenbarger  
 Mrs. Nina M. Burdick  
 Ms. Tamera Burgess  
 Miss Jenifer Burke  
 Ms. Arlene Burstrom+  
 Ms. Amy E. Burtrum+  
 Mrs. Leone Burwell  
 Mrs. Ruby Jean Butler  
 Miss Marcella J. Came  
 Miss Dorothy R. Camilli  
 Mrs. Kathleen L. Cantley  
 Ms. Andrea Cardinal+  
 Miss Gloria Care

Mr. William A. Carrington  
 Mrs. Helen Cartmell  
 Mrs. Cindy Carty  
 Ms. Sally Case  
 Mr. Joseph Cerabone  
 Mrs. Mary L. Chapel  
 Mr. Lyle S. Chapman  
 Ms. Deborah Cherry+  
 Lt. Gov. John D. Cherry Jr.  
 Mr. James R. Chintyan  
 Mrs. Patricia A. Chipman  
 Mrs. Vera Chisholm  
 Ms. Kathy Chvojka  
 Mrs. Diane Clapp  
 Mrs. Jeanne Clark  
 Ms. Marie Coffey  
 Mrs. Billie Cojeen+  
 Miss Anne Cole  
 Ms. Deborah Collins  
 Mrs. Marjorie J. Conover+  
 Mrs. Ida Cooper  
 Mrs. Aundrea Corey  
 Mr. Mark Corrigan+  
 Dr. Giovanna Costantini  
 Ms. Dolores Coulter  
 Miss Holly A. Covell+  
 Mrs. Alice A. Cox  
 Mrs. Elizabeth Craak  
 Ms. Christel Crawford  
 Mrs. Irma Crickmore  
 Miss Carolyn R. Cromwell  
 Ms. Connie Cross  
 Mrs. Ann M. Crouter  
 Ms. Nancy Cunningham  
 Ms. Gail M. Curry+  
 Mr. Robert H. Curtis  
 Mr. Rick Dabrowski  
 Mrs. Mary A. Damanskas  
 Mrs. Beverly L. Danks+  
 Ms. Patricia D'Argis  
 Ms. Susan J. Davidek  
 Mrs. Anne L. Davis  
 Ms. Ann De Meyere  
 Mrs. John S. DeCamp, Jr.  
 Ms. Patricia G. Decker  
 Ms. Marian DeCourval  
 Ms. Winona P. DeCourval  
 Mrs. Jean M. Deegan  
 Ms. Gloria DeHart  
 Mrs. Denise DeKett  
 Ms. Betty L. Dell  
 Mrs. Cynthia Deniau

Ms. Rita Mary DesArmier+  
 Ms. Monique Desormeau  
 Mrs. Nicole DeVary  
 Ms. Elizabeth Dinshaw  
 Ms. Kathleen Dockter+  
 Mrs. Beverly Dominick  
 Ms. Hilma Donahue  
 Ms. Joan E. Dowler  
 Mrs. Mary Kay Drayton  
 Ms. Michelle J. Dvorak  
 Mr. William Dwyer  
 Mrs. Ruth Dye+  
 Mr. Ryan M. Eashoo\*+  
 Mrs. Christine Ecklesderfer  
 Mr. Paul M. Edwards  
 Mrs. Janis G. Eisman+  
 Mr. Saleem El-Amin  
 Mrs. Cora S. Eldred  
 Mrs. Lynn Elliott+  
 Mr. William Ellis  
 Ms. Karen Eppler  
 Ms. Ida L. Epstein+  
 Ms. Nancy Epstein+  
 Ms. Shannon Estep  
 Mr. Harold E. Evans  
 Ms. Gail L. Faulkner+  
 Mrs. Sue Ferriby  
 Ms. Sarah Fiala  
 Mr. Larry Fillingham+  
 Ms. Denise D. Fish+  
 Ms. Merrie Beth Fisher+  
 Ms. Margie Fiszman-Kirsch  
 Ms. Hannelore B. Fleming  
 Mrs. Carol Florida  
 Beatrice Fortune  
 Mrs. Donald R. Freeman  
 Mrs. Eva Friedman  
 Miss Phyllis M. Frost  
 Ms. Barnalene Frost  
 Mrs. Constance I. Fry  
 Ms. Virginia Gaffney  
 Ms. Bobbie Galbraith  
 Mrs. Barbara K. Gamache  
 Ms. Susan E. Garte  
 Ms. Dorothy L. Gates+  
 Mrs. Genevieve A. Gay+  
 Ms. Kathleen Gazall  
 Mr. Charles Gentry\*+  
 Ms. Carolyn Gerhard  
 Mrs. Alicia Geromel  
 Mr. Thomas M. Gervasi+  
 Mrs. Jean Gibbs

## Development

Mrs. Margaret Gilling	Mrs. Lisa Hetherington	Ms. Leigh Kitson	Dr. Ronald Massie	Ms. Tina Pardonnet
Mrs. Elizabeth M. Gilmour	Ms. Maria Hewitt	Miss Angeline Klopff	Ms. Marcia K. Mathews+	Mrs. Patricia Paris
Mr. John A. Giolitti	Mrs. Willa Hewitt	Mrs. Glenda Kniss	Mr. Daniel Matson	Mrs. Majel Parker
Ms. Gloria Goeddeke	Ms. Barbara L. Hill	Mr. Stephen Kober	Mrs. Anne Matthews+	Mrs. Sherry Parker
Ms. Collette Golec	Mrs. Gloria A. Hines	Mrs. Teresa Kogut	Miss Natalie Mattison	Ms. Pamela Payne
Mrs. Deborah Gonser-Adams	Mr. Richard H. Hoag	Ms. Kathryn Kohout	Mr. John T. McAlear	Ms. Constance Peabody
Ms. Georgina O. Gonzalez	Mrs. Norma J. Hockin	Ms. Janette Kolodge	Ms. Michelle McCartney	Mrs. Betty O. Pearson+
Mrs. Marguerite Goodall	Mr. James Hodges+	Ms. Kathleen Konesny	Miss Elisa McDonald	Ms. Marjorie Pearson
Ms. Ardith Goodroe	Ms. Dora Hoelscher	Ms. Jane A. Kravetz	Ms. Joan McDonald	Ms. Cheryl Pell+
Ms. Nancy Gouin	Ms. Sandy Hofacker	Miss Sheryl Kreiner	Mr. William K. McDonald+	Ms. Crystal Pepperdine+*
Ms. Karen A. Gould	Mr. James Hogle	Ms. Trudy Krueger	Ms. Patricia McGaffigan	Ms. Debra Perczak
Ms. B.J. Goulish	Ms. Melanie Holt	Ms. Susan Kurtz	Ms. Catherine McGuire	Ms. Sue Peters
Mrs. Linda Graunstadt	Mrs. Ethel Hooker+	Mrs. Lisa Lamb	Mrs. Nina McGoodwin Jones	Ms. Kim Peterson
Ms. Pat Gray	Mrs. Linda M. Hoover	Ms. Sandra Lammy+	Ms. Patricia A. McKenzie	Mrs. Julie Pflanzner
Mrs. Robert A. Green	Ms. Dorothy Ann Hopper	Mrs. Spencer K. Lany+	Mrs. Darlene McKone	Mr. Theodore V. Phelon
Mrs. Elizabeth B. Gregory	Mrs. Debbie Horkey	Mrs. Marjorie J. Larsen	Ms. Penny McMullen	Ms. Jacqueline Piechowski+
Ms. Suzanne Y. Gregory+	Mrs. Alma Hourvitz	Ms. Deanna R. Law+	Ms. Shelly R. Meisel	Mrs. Lisa Piegdon
Mrs. Carol Groat	Mrs. Radmila Hovey	Miss Kerstin Lawrence+*	Mr. Herb Merrell+	Ms. Kate Pierce
Mrs. Susan A. Grogan	Dr. John A. Howland	Ms. Betty Leavitt+	Ms. Nancy Meszaros	Ms. Marcia Pierce+
Ms. Mary L. Grossklaus+	Ms. Helen R. Hoyt+	Mrs. Emma Lee Ledingham	Mrs. Janet K. Metzelaar+	Ms. Sally Pierson+
Ms. Cleo Gualdoni	Ms. Martha D. Hudson	Mr. Robert Lee	Ms. Sky Mikinak	Mrs. Karan A. Pinkston
Mrs. Joseph Guerin	Ms. Tamara Hunt	Ms. Danielle Leepart+	Mrs. Helen G. Millhouse	Mrs. Frances L. Plagens
Ms. Annie Guevara+	Ms. Vicky L. Hurley	Mr. Thomas LeGendre	Miss Barbara Mirsky	Mr. Trenton Pollard
Ms. Michele L. Gunn	Mrs. Marilyn Hurwitz	Ms. Corie Legue	Ms. Verna Mitoraj+	Mr. Michael Post+
Alfred Gwillim, Ph.D.	Mrs. Ruth B. Hulen	Ms. Hanny Leitson	Mr. John Molyneaux II	Mrs. Ruth Potter
Ms. Catherine Gwiddz	Mrs. Brenda Hynes+	Mrs. Kathryn Lescelius+	Ms. Christina Mulford	Mrs. Eleanor Poulos
Ms. Susan Haas	JoAnn Miller Jackson	Mrs. Kathy Liggett	Mrs. Patricia Murray	Mr. Harry S. Preston
Mrs. Christine Haggin	Ms. Vickie Jackson	Mrs. Jeanette Lindsey+	Mrs. Kelly Myers	Ms. Cherie Previle+
Mrs. Angela Hall	Miss Esther M. Jacob	Ms. Elsie R. Lindstrom	Ms. Lisa Myers	Ms. Brenda J. Price
Mr. Fred Hall*	Ms. April Jacques	Mrs. Kathryn F. Lobban+	Mr. Thomas L. Myers	Mr. Thomas Pugsley
Ms. Lanie Hall	Ms. Sally Jaeger+	Mr. Scott Long	Ms. Ann L. Naddeo+	Ms. Edith J. Qualman
Ms. Kelly Hallas	Ms. Shirron Jeffries	Mrs. Donna J. Lorey	Mrs. Deborah J. Nagel+	Ms. Valerie Quinn
Mrs. Mary F. Hamacher+	Mrs. Rita MacGregor Jeric	Mrs. Eva M. Lovisek	Mrs. Marsha Nail	Ms. Sandra Raffaelli+
Mr. Roy Hamady+	Ms. Patricia Johns+	Mr. Reynold Lowe	Ms. Sharon Y. Naughton	Mrs. Leslie Ragnone
Ms. Laura Hammond	Ms. Diana C. Johnson	Ms. Greta Mackler	Ms. Carol F. Negendank	Dr. Prabha Raju+
Dr. Charles D. Hanson	Ms. Jimmie Johnson	Ms. Suzanne MacWilliams+	Mr. Auldin H. Nelson	Mrs. Joy Ransom
Mrs. Lorraine S. Harcek*	Ms. Judy Johnson+	Mr. Mark H. Madden	Mr. John Nelson	Mrs. Reva Ratner
Mr. Patrick Hardin	Ms. Karen Johnson	Mrs. Dorothy J. Magee	Mr. Wes Ng	Mrs. Lisa Ratza
Ms. Dolores J. Hargreaves	Mr. Richard G. Johnson+	Ms. Mary Magyar	Ms. Kate Nickels	Mrs. Zohra Rawling
Mrs. Dorothy E. Harmer	Ms. Sally L. Johnson	Mr. Michael E. Mahoney+	Ms. Patsy Noffsinger+	Mr. Robert Revis+
Mr. Edward Harris	Mr. Derek Jones	Ms. Barbara K. Main+	Mrs. Betty Noonan	Ms. Bertha Rhodes+
Ms. Susan Harris	Mrs. Laura Jones	Mrs. Kimberly Mancillas	Mrs. Patricia L. O'Brien+	Mrs. Julia Rhodes
Mrs. Marie E. Harrison	Ms. Roberta B. Jones	Ms. Elizabeth Manley+	Ms. Ruth A. O'Connell	Ms. Debi Rice
Mrs. Linda Harwood	Miss Donna L. Joseph	Ms. Pamela Manney	Ms. Gail R. Odom	Mrs. Kathy A. Ridley
Mrs. Catherine Hastings	Mrs. Geraldine Joyner	Ms. Marjorie Markon	Mrs. Carol E. O'Donnell	Mrs. Dolores M. Roat-Arnold+
Mr. Paul F. Hauth	Ms. Tasia Kalemis	Ms. Marlene Marlowe+	Ms. Mary Lou O'Donnell	Ms. Deborah Robertson
Mr. Gil Haven	Mrs. Cheryl Kelly	Miss Rosemary Marsh	Mrs. Patricia Olszewski	Mrs. Patricia Robertson
Ms. Jean Hawkins	Ms. Jane Kelly	Dr. David Marshall+	Ms. Carolyn S. O'Neil+	Ms. Suzanne Rock
Mrs. Barbara G. Hayes	Ms. Kitty Kelly+	Ms. Tamra L. Marta-Schilling	Mrs. Catherine Oscarson	Ms. Patricia Rockafellow
Mr. James A. Hazen	Ms. Brenda Kendall	Ms. Cheryl Martin*	Ms. Tetjana Ossowski+	Mrs. Lorice Rodgers
Ms. Anne M. Heidel+	Miss Morgan Kerry	Ms. Shawn L. Massey	Miss Morgan Otero	Ms. Violet K. Rodgersson
Mrs. Claudia Helser	Mrs. Linda Kingston	Ms. Donna Massie	Mrs. Pam Ouimette	Mr. Dennis F. Roman

Ms. Amy Rose  
 Dr. Judy Rosenthal  
 Ms. Sally Ross  
 Ms. Mary Louise Roth  
 Mrs. Peggy L. Rouse  
 Mrs. Patti Rowe  
 Ms. Margaret J. Royce  
 Mrs. Nancy Ruebke  
 Mr. Jerry Rule+  
 Ms. Shari Russano  
 Mrs. Kathryn Salim  
 Ms. Kathryn Sanders  
 Ms. Libby Sanders-Ford  
 Mrs. Joan Sauter  
 Dr. Diane Schaefer  
 Mr. James Schaefer  
 Mrs. Linda Scharrer  
 Mrs. Margrit Schlatter  
 Mrs. Mary Scholl  
 Mrs. Trudi Schreiber+  
 Dr. Elizabeth Schultz  
 Mrs. Marsha Schweikert  
 Ms. Bernice Scott+  
 Ms. Jacqueline Scott+  
 Ms. Pat Seals  
 Mrs. Peggy Searight  
 Mrs. Linda Searle  
 Ms. Marian D. Seguin  
 Mrs. Marcia Selley  
 Ms. Michele M. Senn  
 Miss Elaine M. Shaheen  
 Mrs. Ruth O. Sharpe+  
 Mrs. Hannelore Shattuck  
 Ms. Peggy L. Shaw  
 Mrs. Melissa Shea  
 Ms. Margaret A. Shedd+  
 Ms. Kathleen A. Sheehy  
 Mrs. Rita M. Sheeran+  
 Ms. Rita Short  
 Ms. Lillian Sicard  
 Ms. Nancy Sigulinsky  
 Mrs. Kristine L. Simoni  
 Ms. Courtney Simpson+  
 Ms. Vivianne Simpson+  
 Mrs. Patricia Sjoström  
 Mrs. Karen Slater  
 Ms. Joan W. Smalley+  
 Ms. Beverly O. Smith  
 Ms. Doris Ann Smith+  
 Dr. Ernestine R. Smith  
 Mr. J. Bert Smith  
 Mrs. Peg Smith

Ms. Sharon Smith  
 Mrs. Terry Ann Smith  
 Mrs. Virginia R. Smith  
 Miss Kimberly Smyth\*  
 Ms. Jane Somers  
 Ms. Berna S. Sorscher+  
 Mrs. Vivian Sowle+  
 Ms. Anita Spencer  
 Ms. Barbara N. Spencer+  
 Mrs. Mary J. Sposito+  
 Mrs. Josephine Sredich+  
 Miss Katie St. John  
 Mrs. Emma Lou St. Onge  
 Mrs. Kathryn Stack  
 Mrs. Jody Staley  
 Mrs. Laura Staley  
 Ms. Cj Stanford  
 Ms. Darilyn Starks  
 Mrs. Kathy Staudacher  
 Mrs. Lois J. Steggall  
 Mrs. Alesa Stephan  
 Mrs. Sally Stevens+  
 Ms. Patrice Stiehl+  
 Ms. Sheila Stoddard  
 Ms. Sally Strand  
 Ms. Elsa M. Strayer  
 Ms. Sandy Struble  
 Mrs. Doris B. Stuendel  
 Mr. Leo J. Sullivan IV+  
 Ms. Susan Sullivan+  
 Mrs. Mary Ann Sullivan -  
 Abendschein+  
 Ms. Leola Summers  
 Mrs. Doris Sutton  
 Mrs. Neomi R. Sweers  
 Mrs. Margaret H. Swenor  
 Ms. Mary W. Swift  
 Mrs. Barbara Syring  
 Mrs. Irene Szuch+  
 Ms. Rose Szwed  
 Mr. Frederick N. Taggart+  
 Ms. Dorothy S. Taylor+  
 Ms. Ernelle Taylor+  
 Ms. Sandra Taylor+  
 Mr. Thomas A. Taylor+  
 Mr. Jim Tebben  
 Mrs. Pamela TerBush+  
 Ms. Janice Tessner  
 Ms. Jeanne C. Thick  
 Mrs. Sally Thielen+  
 Ms. Jewel Thompson  
 Mr. Mark Q. Thornton+

Ms. Patricia Thwing  
 Mrs. Sherry Tompkins  
 Mr. John Tracy  
 Ms. Victoria Travis  
 Mr. Glenn Tripp  
 Ms. Jane B. Trotter+  
 Ms. Marianne Trzcinski  
 Ms. Ernestine Tune  
 Mr. John VanSlambrouck  
 Ms. Shana VanWyck  
 Ms. Shirley Varga  
 Mr. John Vincke  
 Mrs. Rosemary Vuckovich  
 Mrs. Janet L. Wachowski  
 Mrs. Kelly T. Wagner  
 Mrs. Renee Wagner  
 Mrs. Betty Walker  
 Helen J. Walker  
 Rev. Al Wamsley  
 Ms. Wanda R. Warby+  
 Ms. Kimberly Warner+  
 Ms. Gloria F. Watson  
 Mrs. Betty Weber  
 Mrs. Dolores Weeks  
 Mr. Gary D. Weichner  
 Miss Megan L. Weirauch  
 Mrs. Vickie Weiss  
 Mr. Gary Weisserman  
 Ms. Janet Westhoff  
 Mrs. Joyce Wheat+  
 Mr. David E. Wheeler  
 Mrs. Sandra G. White  
 Ms. Norielle Wickham  
 Mrs. Janet Williamson  
 Mr. Garry L. Wilson  
 Ms. M. Jane Windeler-Lawrence  
 Ms. Diane M. Wiselogle+  
 Ms. Ana Wizauer  
 Mrs. Mary Wolski  
 Mr. Jon Wood+  
 Mr. Bradley Woodruff  
 Mrs. Joanne R. Woods+  
 Mrs. Margaret H. Wren  
 Ms. Carrie Wright  
 Ms. Lois Wright+  
 Mrs. Margie Murray Wright  
 Ms. Darla S. Wynn+  
 Mrs. Nicole Yambrick  
 Ms. Darleen Yaskanin+  
 Mrs. Michelle Tock York  
 Miss Mary Luella Yorke  
 Ms. Susan Youmans

Mrs. Barbara A. Young  
 Mr. Matthew G. Young  
 Mr. Robert J. Young  
 Ms. Marcy Yurk  
 Mrs. Beatrice M. Zimmerman  
 Ms. Marie L. ZukMr. Auldin H.  
 Nelson  
 Ms. Kate Nickels  
 Ms. Patsy Noffsinger+  
 Mrs. Patricia L. O'Brien+  
 Ms. Ruth A. O'Connell  
 Ms. Gail R. Odum  
 Ms. Mary Lou O'Donnell  
 Tochi Omenukor  
 Ms. Carolyn S. O'Neil  
 Mrs. Catherine Oscarson  
 Mrs. Pam Ouimette  
 Ms. Tetjana Pokrovskia  
 Ms. Virginia Panek+  
 Mrs. Patricia Paris  
 Ms. Marcia A. Pavkovich  
 Ms. Constance Peabody  
 Mrs. Betty O. Pearson+  
 Ms. Kathryn Pekarek  
 Ms. Cheryl Pell+  
 Ms. Crystal Pepperdine\*+  
 Ms. Janice K. Peraino  
 Ms. Debra Perczak  
 Ms. Sue Peters  
 Ms. Kim Peterson  
 Ms. Kim Peterson  
 Mr. Theodore V. Phelon  
 Ms. Jacqueline Piechowski  
 Ms. Kate Pierce  
 Ms. Marcia Pierce+  
 Ms. Sally Pierson+  
 Mrs. Karan A. Pinkston  
 Mrs. Frances Plagens  
 Mr. Franklin Pleasant  
 Mr. Harold Plotnik  
 Ms. Tetjana Pokrovskia  
 Ms. Shirley M. Porter  
 Mr. Michael Post  
 Mrs. Ruth Potter  
 Mr. Harry S. Preston  
 Ms. Edith J. Qualman  
 Ms. Valerie Quinn  
 Mrs. Anna Marie Rado  
 Ms. Sandra Raffaelli  
 Mrs. Leslie Ragnone  
 Dr. Bobbi J. Ramp\*+  
 Mrs. Lisa Ratza

Mrs. Colleen Reddy  
 Mr. Robert Revis+  
 Ms. Bertha Rhodes+  
 Mrs. Julia Rhodes  
 Ms. Debi Rice  
 Mrs. Kathy A. Ridley  
 Mrs. Dolores M. Roat-Arnold\*+  
 Ms. Deborah Robertson  
 Ms. Suzanne Rock  
 Mrs. Lorice Rodgers  
 Ms. Theresa J. Rodgerson  
 Mr. Dennis F. Roman  
 Ms. Amy Rose  
 Ms. Mary Louise Roth+  
 Mrs. Peggy L. Rouse  
 Ms. Margaret J. Royce  
 Mrs. Nancy Ruebke  
 Mrs. JoAnn Rummmler  
 Ms. Shari Russano  
 Mrs. Geraldine C. Ryle  
 Mrs. Kathryn Salim  
 Ms. Kathryn Sanders  
 Ms. Libby Sanders-Ford  
 Mrs. Joan Sauter  
 Dr. Diane Schaefer  
 Mrs. Linda Scharrer+  
 Mrs. Margrit Schlatter  
 Mr. Ronald J. Schmitz  
 Mrs. Mary Scholl  
 Mrs. Trudi Schreiber  
 Ms. Elizabeth Schultz  
 Mrs. Marsha Schweikert  
 Ms. Jacqueline Scott  
 Ms. Bernice Scott  
 Ms. Pat Seals  
 Mrs. Linda Searle  
 Ms. Marian D. Seguin  
 Ms. Michele M. Senn  
 Miss Elaine M. Shaheen  
 Mrs. Hannelore Shattuck  
 Mrs. Melissa Shea  
 Ms. Margaret A. Shedd+  
 Ms. Kathleen A. Sheehy  
 Mrs. Rita M. Sheeran+  
 Ms. Rita Short  
 Ms. Lillian Sicard  
 Ms. Nancy Sigulinsky  
 Ms. Margaret Simen+  
 Mrs. Kristine L. Simoni  
 Ms. Courtney Simpson+  
 Ms. Vivianne Simpson+  
 Ms. Joan W. Smalley+

## Development

Mr. J. Bert Smith  
 Ms. Beverly O. Smith  
 Ms. Doris Ann Smith+  
 Dr. Ernestine R. Smith  
 Mrs. Peg Smith  
 Ms. Sharon Smith  
 Ms. Jane Somers  
 Ms. Berna S. Sorscher+  
 Mrs. Vivian Sowle\*+  
 Ms. Barbara N. Spencer+  
 Mrs. Josephine Sredich+  
 Mrs. Emma Lou St. Onge+  
 Ms. Debbie Stabenow  
 Mrs. Kathryn Stack  
 Ms. Cj Stanford  
 Ms. Darlyn Starks  
 Mrs. Kathy Staudacher  
 Mrs. Lois J. Steggall  
 Mr. Michael Steinkraus  
 Mrs. Alesa Stephan  
 Mrs. Sally Stevens+  
 Ms. Patrice Stiehl+  
 Ms. Jill Stirling\*  
 Ms. Sheila Stoddard  
 Ms. Sally Strand  
 Ms. Elsa M. Strayer  
 Ms. Sandy Struble  
 Mr. Leo J. Sullivan IV+  
 Ms. Susan Sullivan+  
 Mrs. Mary Ann Sullivan -  
 Abendschein+  
 Ms. Leola Summers  
 Mrs. Neomi R. Sweers  
 Mrs. Margaret H. Swenor  
 Ms. Phyllis Sykes+  
 Mrs. Barbara Syring  
 Mrs. Irene Szuch  
 Mr. Frederick N. Taggart  
 Ms. Sandra Taylor+  
 Ms. Dorothy S. Taylor+  
 Ms. Ernelle Taylor  
 Miss Lisa Taylor  
 Mr. Thomas A. Taylor+  
 Mrs. Pamela TerBush+  
 Ms. Jeanne C. Thick\*  
 Mrs. Mary Kay Thompson-Kelly  
 Ms. Wilma F. Thoms  
 Mr. Mark Q. Thornton+  
 Ms. Patricia Thwing+  
 Mr. John Tracy  
 Ms. Victoria Travis  
 Mr. Glenn Tripp

Ms. Jane B. Trotter+  
 Ms. Marianne Trzcinski  
 Mrs. Rosemary Vuckovich\*  
 Mrs. Janet L. Wachowski  
 Mrs. Renee Wagner  
 Helen J. Walker  
 Mrs. Betty Walker  
 Mrs. Helen J. Walker  
 Ms. Wanda R. Warby+  
 Ms. Kimberly Warner+  
 Mrs. Betty Weber  
 Mrs. Dolores Weeks  
 Mr. Gary D. Weichner  
 Mrs. Vickie Weiss  
 Mrs. Karen A. Wells  
 Ms. Janet Westhoff  
 Ms. Kim Whalen  
 Mrs. Joyce Wheeler+  
 Mr. Dave Wheeler  
 Mr. Scott Whipple  
 Mrs. Sandra G. White  
 Ms. Barbara B. White  
 Mrs. Janet Williamson  
 Mr. Garry L. Wilson  
 Ms. Diane M. Wiselogle  
 Mrs. Edith Witney  
 Ms. Ana Wizauer  
 Mr. Dale F. Sullivan IV+  
 Mrs. Mary Wolski+  
 Mr. Jon Wood+  
 Mrs. Joanne R. Woods+  
 Mrs. Margie Murray Wright  
 Ms. Carrie Wright  
 Ms. Lois Wright+  
 Ms. Darla S. Wynn+  
 Mrs. Nicole Yambrick  
 Ms. Darleen Yaskanin+  
 Mrs. Michelle Tock York  
 Miss Mary Luella Yorke  
 Mr. Robert J. Young  
 Mrs. Barbara A. Young  
 Ms. Marcy Yurk  
 Mrs. Beatrice M. Zimmerman  
 Ms. Marie L. Zuk

### Student

(\$20 annually)  
 Ms. Alexa Aldridge  
 Miss Tashween Ali  
 Mr. Corwin Andrews  
 Mr. Michael Atchison  
 Miss Krista Awad

Miss Joanna M. Care  
 Mrs. Delores Carter  
 Miss Marshay Chapman  
 Miss Erin Conklin  
 Mr. Kevin Darke  
 Mr. Ryan A. Dickey  
 Miss Andrea Dickson  
 Ms. Anna G. Everett  
 Mrs. Andrea Fahim  
 Miss Karen Gauss+  
 Ms. Allannah Griffin  
 Ms. Tina Hall  
 Miss Mindy Halligan  
 Miss Lisa Hathaway  
 Ms. Susan G. Helser  
 Miss Grace L. Henderson  
 Mrs. Alice M. Hicks  
 Miss Catherine Hockensmith  
 Miss Gwendolyn Hopkins  
 Mr. Thomas G. Horne  
 Mrs. Patricia Howe-Smith  
 Mr. Robert G. Jackson  
 Mr. Audrick Johnson  
 Miss Edie Juno  
 Mr. David King  
 Miss Adrian Klautsch  
 Ms. Katherine Knickerbocker  
 Mrs. Edith Krehel  
 Mr. Christopher Langlois  
 Mr. Brent K. LaPonsey  
 Ms. Carolyn LeDuc-Krehel  
 Miss Linda Lucas  
 Mrs. Laura Luongo  
 Miss Laury Luongo+  
 Ms. Debbie Manning  
 Miss Julia Markarova  
 Mr. Philip J. McKeachie  
 Ms. Candara McQueen  
 Ms. Marti Miller  
 Miss Jayna Mueser  
 Ms. Ava E. Myler  
 Ms. Adria Palinsky+  
 Mr. Charles Parker  
 Mr. Andrew Putnam  
 Ms. Sarah Ruth  
 Miss Jenette Schanick+  
 Ms. Kelsey Sheldon  
 Miss Lien Shiang-Yurn  
 Mrs. Samantha J. Siebert+  
 Mr. Shaun Smakal+  
 Mrs. Kathryn D. Taipalus  
 Ms. Cheryl A. Taubitz

Ms. Anne Thomas  
 Ms. Alexis Tomrell  
 Mrs. Mary Weeden  
 Ms. Marian Wilson  
 Mr. Julien York  
 Ms. Kate L. Zawacki  
 Miss Kaitlyn Zumbach

### Children

(\$5 annually)  
 Lucias Allen  
 Cameron Alvado  
 Cole Thomas Alvado  
 Grant Alvado  
 Valerie Alvado  
 Gabriella Amaya  
 Megan Amaya  
 Megan Aneq  
 Willow Armstrong  
 Patrick Banwell  
 Austin Barrett  
 Kate Lynn Barrett  
 Kalen Batson  
 Malachi Batson  
 Destiny Benton  
 Edris Benton  
 Nicole Bergman  
 Korbyn Brock  
 Charity Broussard  
 Faith Broussard  
 Lance Brown  
 Sadie Brown  
 Peyton Buckwheat  
 Jamilah Carter  
 Audrey Casadonte  
 Duntane Chaney  
 Alexis Chapman  
 Marley Chase  
 Matthew Clark  
 Jason J. Clements  
 Liam Clemons  
 Brandon Curry  
 Bijan Darakhshandeh  
 Kean Darakhshandeh  
 Mitra Darakhshandeh  
 Miles Davis  
 Aryanna Dawson  
 Malya Day  
 Evelyn DeLauter  
 Riley DeLauter  
 Lauren Delooze  
 Journi Demps-Howell

Jayanti Demps-Howell  
 Aditi Desai  
 Rachel Doerr  
 Brandon Domino  
 Chelsea Domino  
 Jared Domino  
 Maya Domino  
 Raven Domino  
 Eden Donnelly  
 Rachell Drain  
 John Dunavan  
 Lillian Dunavan  
 Alieshia Dykes  
 Devin Dykes  
 Donovan Dykes  
 Jeremiah Ebel  
 Marybeth Ebel  
 Brennon Fann  
 Aaron Farber  
 Joey Farber  
 Kaitlin Filek  
 Jarad Forgach  
 Joli Forgach  
 Devin Fuller  
 Justin Fuller  
 Jozlen Gabera  
 Rowen Gabera  
 Taylor Gladney  
 Hannah Godek  
 Jonathan Godek  
 Danielle Greene  
 Victor Greene  
 Madison Grice  
 Max Grice  
 Hannah Griswold  
 Hayden Groult  
 Indira Hare  
 Kristen Harmon  
 William Rabiah Harmon  
 The Hart Boys  
 Lauren Kay Harvey  
 Kiahndre Hawkins  
 Roland Hill  
 Jill Himelhoch  
 Michael Holdsclaw  
 Drew Hosler  
 Allison Howd  
 Ashley G. Howd  
 Sydney Hynes  
 Alisea Jackson  
 Marquta Jimenez  
 Dylan Johnson



Jacob Johnson  
 Khalil Johnson  
 Nigell Johnson  
 Sydney Johnson  
 Anna Johnston  
 Lily Johnston  
 Mattie Johnston  
 Daquaris Jones  
 Keturah Jones  
 Marcus Jones  
 Paige Jordan  
 Raegan Kerr  
 Jim Kiser  
 Katrina Kowalski  
 Billy Krantz  
 Adam Krupa  
 Rylee Lambert  
 Tatum Lambert  
 Antenario Lee  
 Joey Lee  
 Lauren Lee  
 Alivia Lewis  
 Graham Lippincott  
 Joe Loder  
 Nate Loder  
 Theodore Louckes  
 Brent Lowell  
 Ashlyn Lynch  
 Aubrie Lynch  
 Chris Macaulay  
 Keith Macaulay  
 Madie Macaulay  
 Eibhen MacIntyre  
 Analise Macksood  
 Elizabeth Macksood  
 Dorace Martin  
 Shannon Martines  
 Shawna Martines  
 Caroline Maxwell  
 Madeline Maxwell  
 Grasa McClure  
 Willie McClure  
 Kierra McKenzie  
 Courtney McMullen  
 Jeremy McMullen  
 Chelsea Miller  
 Jovon Milton  
 Ma'at Nadir  
 Rahim Nadir  
 Chase Nagy  
 Rachel Nagy  
 The Neuer Boys

Alycia Nikoloff  
 Morgan Otero  
 Chelsea Perry  
 Krystal Perry  
 Edrice Poole  
 Shamar Poole  
 Elaina Proctor  
 Nadia Proctor  
 Ben Rempel  
 Bethany Rockman  
 Anna & Sophie Rosario  
 Santiago Rueda  
 Savannah Sam-Flood  
 Ivy Sanchez  
 Ashley Sanders  
 Elizabeth Schumitsch  
 Noah Schumitsch  
 Pamela Schumitsch  
 Zachary Schumitsch  
 Amanda Scott  
 Elizabeth Scott  
 Jasmine Scott  
 Christen Seidor  
 Ari Shansky-Genovese  
 Isabella Shansky-Genovese  
 Sadie Shansky-Genovese  
 Ania Shields  
 Neetahwis Shognosh-Diaz  
 Wahbzii Shognosh-Diaz  
 Laila Shumpert  
 Alexianna Skaff  
 Bella Skaff  
 Mason Skaff  
 Allie Spade  
 Austen Spade  
 Krista Staley  
 Gabrielle Summers  
 Shaylynn Summers  
 Imani Taylor  
 Myles Taylor  
 Jack Tenore  
 Kyle Thomas  
 Emma Trone  
 Daymen Ray Turner  
 Nicholas Vadasz  
 Baylee Watson  
 Alyssa Weatherwax  
 Madison Weatherwax  
 Seth Weatherwax  
 Adrienne Weaver  
 Alanna Weaver  
 Douge Weaver

Jace Weaver  
 Savannah Weaver  
 Tucker White  
 Morgan Whitehead  
 Gabrielle Wilber  
 Joshua Wilber  
 James Willborn  
 Jakaylen Williams  
 Jimmy Williams  
 Moniesha Williams  
 Natosha Wilson  
 Daniel Wirth  
 Deanna Wirth  
 Nia Wirth  
 Emily Woodard  
 Chelsea Worsley  
 Maggie Zientek  
 Quincy Zientek

Board of Directors  
Flint Institute of Arts  
Flint, Michigan



4468 Oak Bridge Dr.  
Flint, MI 48532  
810.732.3000  
800.899.4742  
810.732.6118 fax

## Independent Auditor's Report

We have audited the accompanying statement of financial position of Flint Institute of Arts, a Michigan non-profit corporation, as of June 30, 2007 and the related statements of activity, functional expenses and cash flows for the year then ended. These financial statements are the responsibility of the Institute's management. Our responsibility is to express an opinion on these financial statements based on our audit. The prior year summarized comparative information has been derived from the organization's 2006 financial statements and, in our report dated September 1, 2006, we expressed an unqualified opinion on those financial statements.

We conducted our audit in accordance with auditing standards generally accepted in the United States of America. Those standards require that we plan and perform the audit to obtain reasonable assurance about whether the financial statements are free of material misstatement. An audit includes examining, on a test basis, evidence supporting the amounts and disclosures in the financial statements. An audit also includes assessing the accounting principles used and significant estimates made by management, as well as evaluating the overall financial statement presentation. We believe that our audit provides a reasonable basis for our opinion.

In our opinion, the financial statements referred to above present fairly, in all material respects, the financial position of the Flint Institute of Arts, as of June 30, 2007, and the changes in net assets and its cash flows for the year then ended in conformity with accounting principles generally accepted in the United States of America.

Our audit was made for the purpose of forming an opinion on the basic financial statements taken as a whole. The supplemental financial information is presented for purposes of additional analysis and is not a required part of the basic financial statements. Such information has been subjected to the auditing procedures applied in the audit of the basic financial statements, and in our opinion, it is fairly stated in all material respects in relation to the basic financial statements taken as a whole.

*Yeo & Yeo, P.C.*

Flint, Michigan  
November 26, 2007

## Statement of Financial Position

June 30, 2007 with comparative totals for 2006



	Unrestricted		Temporarily Restricted		Permanently Restricted	Total All Funds	
	Operating Fund	Plant Fund	Restricted Fund	Permanent Collection Fund	Endowment Fund	2007	2006
<b>Assets</b>							
		-987,917					
Cash and cash equivalents	\$ 870,920	\$ -	\$ -	\$ -	\$ -	\$ 870,920	\$ 690,468
Accounts receivable	146,771	-	2,888,157	-	-	3,034,928	4,394,388
Contributions receivable	-	-	971,810	-	8,728	980,538	1,442,017
Inventory	80,401	-	-	-	-	80,401	78,590
Prepaid expenses	39,042	-	25,527	-	-	64,569	106,428
Due from (to) other funds	2,080,657	57,768	209,515	445,880	(2,793,820)	-	-
Fixed assets	-	19,838,716	-	-	-	19,838,716	18,308,371
Permanent collection	-	-	-	1	-	1	1
Interest in income trusts	-	-	-	-	1	1	1
Gift Annuity Trust	-	-	46,595	-	-	46,595	44,839
Long-term investments	493,663	-	-	-	14,359,604	14,853,267	13,171,094
<b>Total assets</b>	<b>\$ 3,711,454</b>	<b>\$ 19,896,484</b>	<b>\$ 4,141,604</b>	<b>\$ 445,881</b>	<b>\$ 11,574,513</b>	<b>\$ 39,769,936</b>	<b>\$ 38,236,197</b>
<b>Liabilities and Net Assets</b>							
<b>Liabilities</b>							
Accounts payable	\$ 257,825	\$ -	\$ -	\$ -	\$ -	\$ 257,825	\$ 421,154
Accrued expenses and withheld taxes	155,926	-	-	-	-	155,926	128,729
Deferred revenue	13,584	-	37,500	-	-	51,084	128,012
<b>Total liabilities</b>	<b>427,335</b>	<b>-</b>	<b>37,500</b>	<b>-</b>	<b>-</b>	<b>464,835</b>	<b>677,895</b>
<b>Net Assets</b>							
Unrestricted	3,284,119	19,896,484	-	-	-	23,180,603	20,501,775
Temporarily restricted	-	-	4,104,104	445,881	-	4,549,985	6,113,135
Permanently restricted	-	-	-	-	11,574,513	11,574,513	10,943,392
	<b>3,284,119</b>	<b>19,896,484</b>	<b>4,104,104</b>	<b>445,881</b>	<b>11,574,513</b>	<b>39,305,101</b>	<b>37,558,302</b>
<b>Total liabilities and net assets</b>	<b>\$ 3,711,454</b>	<b>\$ 19,896,484</b>	<b>\$ 4,141,604</b>	<b>\$ 445,881</b>	<b>\$ 11,574,513</b>	<b>\$ 39,769,936</b>	<b>\$ 38,236,197</b>



## Statement of Activities

Year ended June 30, 2007 with comparative totals for 2006

	Unrestricted		Temporarily Restricted		Permanently Restricted	Total All Funds	
	Operating Fund	Plant Fund	Restricted Fund	Permanent Collection Fund	Endowment Fund	2007	2006
<b>Revenues, Gains, and Other Support</b>							
Public support							
Contributions/Bequests	\$ 334,156	\$ -	\$ 339,164	\$ 315,001	\$ 408,083	\$ 1,396,404	\$ 2,149,724
Grants	752,609	-	439,780	-	-	1,192,389	723,139
Trust contributions	122,382	-	-	-	-	122,382	113,735
Total public support	1,209,147	-	778,944	315,001	408,083	2,711,175	2,986,598
Revenue							
Museum shop sales - less direct costs of \$ 101,737 and \$ 100,271	40,894	-	-	-	-	40,894	21,822
Memberships	234,571	-	-	-	-	234,571	205,144
Tuition	110,394	-	20,435	-	-	130,829	138,981
Exhibitions and programs	-	-	617	-	-	617	2,808
Ticket sales	-	-	21,936	-	-	21,936	23,911
Investment income	24,002	-	7,727	-	1,060,044	1,091,773	850,388
Realized gain on investments	127,563	-	2,059	-	-	129,622	314,485
Miscellaneous income	254,122	-	-	505,258	-	759,380	203,772
Total revenue	791,546	-	52,774	505,258	1,060,044	2,409,622	1,761,309
<b>Net assets released from restrictions</b>							
Satisfaction of grant/program restrictions	841,291	-	(841,291)	-	-	-	-
Total net assets released from restrictions	841,291	-	(841,291)	-	-	-	-
Total public support and revenue	2,841,984	-	(9,573)	820,259	1,468,127	5,120,797	4,747,907
<b>Expenses and losses</b>							
Program services							
Classes	239,763	46,792	-	-	-	286,555	250,977
Public information	192,345	28,679	-	-	-	221,024	277,255
Permanent collections	441,055	149,433	-	-	-	590,488	564,121
Exhibitions	811,619	143,396	-	-	-	955,015	759,939
Museum shop	174,429	51,321	-	-	-	225,750	173,639
Programs	665,092	137,359	-	-	-	802,451	768,188
Total program services	2,524,303	556,980	-	-	-	3,081,283	2,794,119



## Statement of Activities

Year ended June 30, 2007 with comparative totals for 2006



	Unrestricted Funds		Restricted Funds		Permanently Restricted Endowment Fund	Total All Funds	
	Operating Fund	Plant Fund	Temporarily Restricted Fund	Permanent Collection Fund		2007	2006
Supporting services							
Management and general	\$ 834,973	\$ 46,792	\$ -	\$ -	\$ -	\$ 881,765	\$ 998,622
Total supporting services	834,973	46,792	-	-	-	881,765	998,622
Total expenses	3,359,276	603,772	-	-	-	3,963,048	3,792,741
Losses and distributions							
Realized loss on investments	20,129	-	-	-	-	20,129	81,034
Trust distributions to other parties	-	-	4,400	-	-	4,400	4,400
Total losses and distributions	20,129	-	4,400	-	-	24,529	85,434
Total expenses, losses and distributions	3,379,405	603,772	4,400	-	-	3,987,577	3,878,175
Excess of public support and revenue over (under) expenses and losses before other changes in net assets	(537,421)	(603,772)	(13,973)	820,259	1,468,127	1,133,220	869,732
Other changes in net assets							
Property and equipment transfers-purchase of fixed assets	(6,076)	2,126,441	(2,120,365)	-	-	-	-
Collection items not capitalized	-	-	-	(374,338)	-	(374,338)	(61,768)
Trust transfers	547,625	-	13,966	-	(561,591)	-	-
Interfund transfers	165,793	-	109,663	(41)	(275,415)	-	-
Unrealized loss on investments	-	-	-	-	-	-	(152,880)
Unrealized gain on investments	986,238	-	1,679	-	-	987,917	187,193
Total other changes in net assets	1,693,580	2,126,441	(1,995,057)	(374,379)	(837,006)	613,579	(27,455)
Total change in net assets	1,156,159	1,522,669	(2,009,030)	445,880	631,121	1,746,799	842,277
Net assets - beginning of year	2,127,960	18,373,815	6,113,134	1	10,943,392	37,558,302	36,716,025
Net assets - end of year	\$ 3,284,119	\$ 19,896,484	\$ 4,104,104	\$ 445,881	\$ 11,574,513	\$ 39,305,101	\$ 37,558,302

### Board of Trustees

Michael J. Behm, *President*  
Louis Hawkins, *First Vice-President*  
Valorie Horton, *Second Vice-President*  
Chris Flores, *Secretary*  
Henry C. Thoma, Jr., *Treasurer*  
Ernest Hamady, *Immediate Past President*  
Earl Bell  
F. James Cummins  
James D. Draper  
Charlene Farella  
Arminda Garcia  
Ernestine Holmes  
Lynne Hurand  
James Johnson  
Chris Kelly, Jr.  
Marilyn Kopp  
Mark L. Lippincott  
Gertrude (Sissy) MacArthur  
William Moeller  
Elizabeth Murphy  
Robert Piper  
Ann Reitz Saab  
Timothy Sanford  
Phyllis Sykes  
Mary Ann Tremaine  
Jan Werschky  
Claire White

### Honorary Trustees

Opal Danziger  
Elizabeth Neithercut  
Jack W. Thompson, M.D.

### Friends of Modern Art

Chris Kelly, Jr., *President*  
Philip Barnhart, *Vice President*  
Michael Wright, *Secretary*  
Amy Burtrum, *Treasurer*

### Founders Society

Marilyn Kopp, *President*  
Linda Beadtelyon, *First Vice President*  
Ann Eastman, *Second Vice President*  
Mary Houton, *Treasurer*  
Patti Ballentine, *Corresponding Secretary*  
Penelope Pestronk, *Recording Secretary*  
Connie Armstrong, *Immediate Past President*

## Museum Art School Faculty

Guy J. Adamec  
Jim Ames  
Rebecca A. Andrus  
Sheena A. Borrie  
Clay Dockins  
Alla B. Dubrovich  
Alice Foster-Stocum  
Mark J. Hanner  
Linda M. Harwood  
Jennifer A. Hatcher  
Karyn R. Konkel  
Martha J. Lawrence  
Gretchen N. Miller  
Vickie Roberts  
Boris D. Turner  
Danen C. Williams

## Staff

John B. Henry, III, *Director*  
Dolores R. Allen, *Receptionist*  
Steven M. Balistreri, *Museum Shop Clerk*  
Inge M. Beardslee, *Security*  
Steve Blake, *Custodian Assistant*  
Cynthia J. Bockart, *Special Events Coordinator*  
Duncan A. Cardillo, *Curatorial Assistant*  
Robert G. Carmack, *Security*  
Sally J. Case, *Security*  
Bryan T. Christie, *Facilities Manager*  
Loretta Clerkley, *Custodian*  
Kathryn E. Conant, *Retail Clerk*  
Gail M. Curry, *Receptionist*  
Jason Dake, *Assistant Curator of Education*  
Monique M. Desormeau, *Curator of Education*  
Charles H. Davis, *Security*  
Raymond F. Durgan, *Security*  
Oneal Edwards, *Security*  
Ida L. Epstein, *Museum Shop Assistant*  
Janet L. Friesen, *Art Education Coordinator*  
Hazel M. Frost, *Art Educator*  
Charles E. Gentry, *Assistant Curator of Film & Video*  
Elizabeth M. Gilmour, *Museum Shop Assistant*  
Lori B. Ginn, *Museum Shop Assistant*  
Lisa B. Gonzalez, *Curator of Collections & Exhibitions*  
Heather A. Harwood, *Assistant Curator of Education*  
John B. Henry, IV, *Facilities Assistant*  
Sharol L. Hollier, *Art School Instructor & Studio Assistant*

Aaron Horne, *Retail Clerk*  
Donald O. Howell, *Assistant Facilities Manager & Preparator*  
Judith M. Irwin, *Administrative Assistant to the Director*  
Robert J. Irwin, *Security*  
Jill L. Johnson, *Assistant to the Curator of Collections & Exhibitions*  
Judy A. Johnson, *Librarian*  
Johnnie Jones, *Security*  
James B. Kaczorowski, *Facilities Assistant*  
Claire M. Kander, *Retail Clerk*  
James K. Kelly, *Security Supervisor*  
Michelle R. Kelly, *Security*  
Gary E. Kerr, *Security*  
Esther R. Kruszewski, *Retail Clerk*  
Jacqueline LaCross, *Art School Administrative Assistant*  
Miles Lam, *Graphic Designer*  
Micheline LaTurneau, *Security*  
Frederick Luten, *Custodian*  
Sue J. Marr, *Receptionist*  
Michael D. Martin, *Registrar*  
Brian G. McGhee, *Retail Clerk*  
Jeffrey McLaurin, *Facilities Assistant*  
Michael A. Melenbrink, *Assistant Director of Finance & Administration*  
Peter H. Ott, *Curatorial Assistant*  
Louise Parham, *Receptionist*  
Franklin W. Pleasant, *Development Administrator*  
Cory Potter, *Museum Shop*  
James C. Ratza, *Security*  
Richard C. Rhyndress, *Safety & Security Supervisor*  
Lisa K. Roeser, *Retail Services Manager*  
Jeanene A. Schaller, *Art School Receptionist*  
Kathryn K. Sharbaugh, *Assistant Director of Development*

Valarie F. Shook, *Membership Coordinator*  
Timothy J. Smith, Jr., *Facilities Assistant*  
Martin J. Stefan, *Security*  
Robert A. Stevens, *Security*  
Tracey S. Stewart, *Development Officer*  
Ernest D. Stiles, *Security*  
Dane F. Teeter, *Facilities Assistant*  
Billie G. Traylor, *Security*

The Collection Maintenance and Storage project is supported in part by Save America's Treasures through a partnership between the National Endowment for the Arts and the National Park Service, Department of the Interior.

Save America's Treasures is a public-private partnership between the National Trust for Historic Preservation and the National Park Service dedicated to preserving our nation's irreplaceable historic and cultural treasures for future generations.

FIA exhibitions and programs are made possible in part with the support of the Michigan Council for Arts and Cultural Affairs, a partner agency of the National Endowment for the Arts.









FLINT INSTITUTE OF ARTS

1120 E. Kearsley St.  
Flint, MI 48503-1915

---

Non-Profit Org.  
U.S. Postage  
**PAID**  
Flint, MI  
Permit 140

---