

# FIA

magazine

NOV-DEC 2022



# CONTENTS

executive director	1	lectures	19
exhibitions	2-7	presentations	20
acquisitions	8-11	events	21-22
art on loan	11	calendar	23-24
films	12-13	membership	25-29
art school	14-15	contributions	30-32
education	16-18	museum shop	33

## Office Hours

Mon-Fri, 9a-5p

## Gallery Hours

Mon-Wed &  
Fri-Sat, 10a-5p;  
Thu, 10a-8p;  
Sun, 1p-5p  
*Closed on major  
holidays*

NOW  
OPEN UNTIL  
8:00P ON  
THURSDAYS

## Museum Shop & Art School Gallery

Mon-Wed & Fri-Sat, 10a-5p;  
Thu, 10a-8p; Sun, 1p-5p

## The Palette Café

810.249.0593  
Mon-Wed & Fri-Sat, 10a-5p;  
Thu, 10a-8p; Sun, 1p-5p

*The Museum Shop, Art School  
Gallery, and The Palette Café are  
open late for select special events.*

## Admission

Adults \$10.00\*  
12 & under FREE  
Students w/ ID \$8.00\*  
Senior citizens 62+,  
active military, & veteran \$8.00\*



FREE SATURDAYS

\* Free to FIA members and  
Genesee County residents

## Website

flintarts.org

## Address

1120 E. Kearsley St.  
Flint, MI 48503

## Telephone

810.234.1695

## Fax

810.234.1692

The FIA is a non-profit,  
equal opportunity  
employer, and provides  
programs and services without regard to  
race, color, religion, national origin, age,  
gender identity, or disability.

Operating support for the  
FIA is provided in part by  
the Charles Stewart Mott  
Foundation.



FIA operations are funded in  
part by the Genesee County  
Arts Education and Cultural  
Enrichment Millage funds.  
Your tax dollars at work.



FIA Exhibitions and Programs are  
made possible in part with the  
support of the Michigan  
Council for Arts and  
Cultural Affairs, a  
partner agency of the  
National Endowment  
for the Arts.



This magazine, made possible  
through a generous donation by  
Lynne Hurand, is published five  
times per year for mailing to FIA  
members, museums, and libraries  
around the country.

## Board of Trustees

Thomas B. Lillie, *President*  
Kathryn C. Boles, *First Vice-President*  
Dean T. Yeotis, *Second Vice-President*  
Elisabeth Saab, *Secretary*  
Jay Werschky, *Treasurer*  
Elizabeth S. Murphy, *Immediate Past President*  
John Bracey  
Ann K. Chan, *Founders Society President*  
Mona Hardas  
Carol Hurand  
Lynne Hurand  
Dale Keipert  
James R. Kettler  
Alan Klein, *Trustee Emeritus*  
Mark L. Lippincott  
Eureka McCormick  
Bryant W. Nolden  
Matthew L. Norwood  
Karl A. Olmsted  
Dr. Brenda Rogers-Grays  
Mary Coe Ryan  
Betty Salimi  
James Shurter, *Friends of Modern Art President*  
Sharon A. Simeon  
Theresa A. Stephens-Lock  
Tiffany Stolzenfeld  
David T. Taylor  
Anton Thornquist  
Gregory G. Viener  
Dale K. Weighill  
Shannon Easter White

## Administration

Tracee J. Glab, *Executive Director*  
Michael A. Melenbrink, *Director of Finance & Administration*  
Marissa Pierce, *Director of Development*  
Monique M. Desormeau, *Curator of Education*  
Donovan Entrekin, *Director of the Art School*  
Sarah Mullane, *Director of Member & Guest Relations*

cover image from the exhibition  
(pages 2 & 3)

## Tyler Jacobson

American, born 1982  
*Red Dragon* (detail), 2014  
Digital print on paper  
16 x 36 inches  
Collection of the artist  
© Wizards of the Coast

# From the Executive Director

## Flint is Home

Recently I moved from the Detroit area to Flint. Though I have worked in Flint for more than a decade, a variety of reasons prevented me from moving closer to the city. When I was appointed the new Executive Director, I knew that I wanted to live as near to the FIA as possible and I was fortunate to find a home in Flint. This move has made me reflect on what it means to make a home, how we can become rooted in a new place, and what role art plays in this fundamental human need.

One thing that makes a place a home is the people around you. In the exhibition *Flint Is Family, Act I*, this truth is on display



world. As the stories in the exhibition reveal, sometimes the best way to find our way home is to first go somewhere else, even if only in our imaginations.

I have also thought about the role of art in my move to Flint. Bare walls make a house feel less like a home, and it was a happy day for me when I could put photographs, artist's works, and family mementos in just the right places. It's interesting how just one object can instantly make a new space feel more welcoming and familiar. At the FIA, there are many ways you can bring art into your home. Join the Flint Print Club (see page 26) and receive a print by artist Hubert Phipps as a benefit of membership. Attend the Celebration of Prints in Flint (page 22) to purchase



as the photographer LaToya Ruby Frazier documented the Flint water crisis by following Shea Cobb and her family in 2016. Each photograph reveals a different aspect of the crisis through a personal lens, showing how Cobb endured with the help of her family and friends. The photographs demonstrate the strength and resilience of Flint residents, revealing the importance of family and community.

Another way to become rooted in a new place is to discover what we have in common—and one of the most shared desires is to find ourselves in a story. The exhibition *Enchanted: History of Fantasy Illustration* presents imagery inspired by fantastical stories and how these tales have shaped our identities and dreams. These texts include adventure stories, ancient myths, fairy tales, and modern-day fantasy fiction, all showing the different ways writers and artists have explored their place in the

a work on paper. Visit the Museum Shop and purchase the works of various media created by FIA Art School faculty and students; or collect a unique work of glass made during our free McLaren glassblowing demonstrations. You can also enroll in an Art School class or workshop and learn how to make a work of art for yourself or someone else.

For all the ways I've described above, Flint already feels like home.

Sincerely,

*Tracee*

**Tracee J. Glab**  
Executive Director

**Meet & Greet**  
**December 17**  
**12p-2p**

Meet the FIA's Executive  
Director, Tracee Glab and  
get to know her vision  
for the Institute.



# Enchanted

## A History of Fantasy Illustration

through 1.8.23

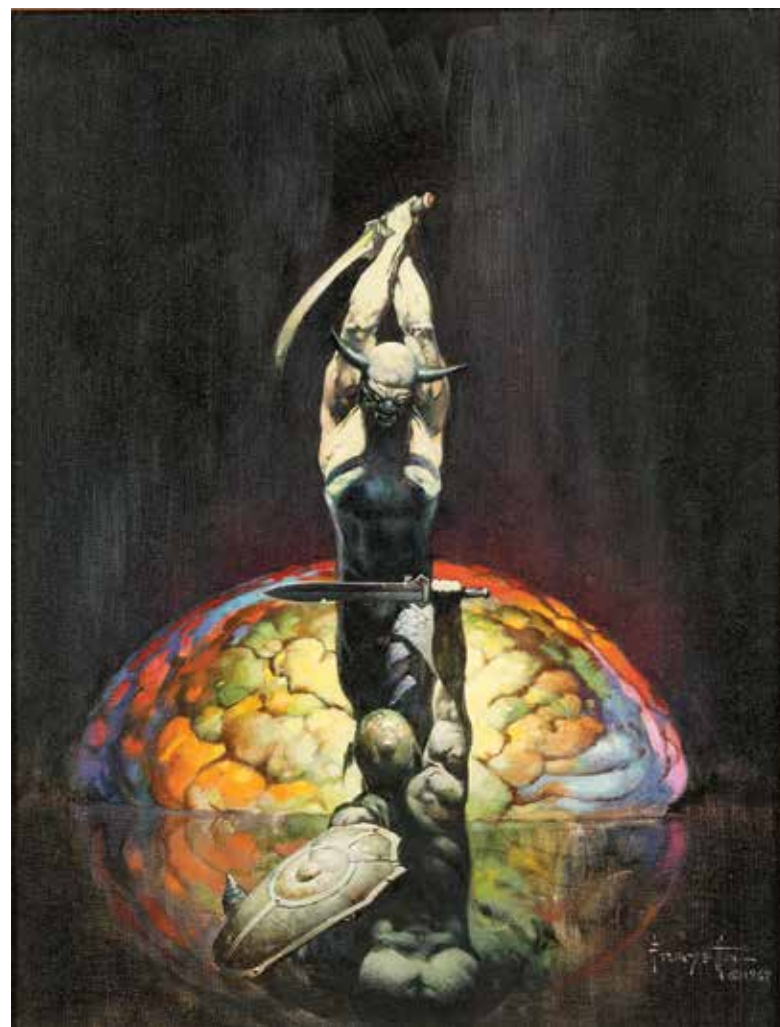
Hodge & Henry Galleries

Featuring examples of fantasy archetypes from the last century, *Enchanted: A History of Fantasy Illustration* explores how artists have brought to life mythologies and fairy tales, as well as modern stories. From the past to the present, artists have been inspired by the imaginative potential of fantasy. Unlike science fiction, which is based on fact, fantasy presents an impossible reality that artists are free to explore and interpret with no limitations.

Organized into three sections—Adventure, Story-telling, and Good and Evil, *Enchanted* takes you through a journey that encounters fire-breathing dragons, angels battling demons, magicians weaving spells, gods and monsters, knights in shining armor, and more, all while tracing the development of fantasy illustration. The exhibition includes artworks that span from the 16th century to today and includes artists Hendrick Goltzius, Howard Pyle, Frank Frazetta, Victo Ngai, and more.

Sponsored by  
**Susie Thompson**

Frank Frazetta



**Frank Frazetta**  
American, 1928–2010  
*The Brain*, 1967  
Oil on canvas  
17½ x 13½ inches  
Collection of Jim Halperin, Heritage Auctions (HA.com)  
© Frazetta Girls LLC

**Eric Velhagen**  
American  
*Mulan*, 2018  
Oil on cradled panel  
24 x 24 inches  
On Loan from the Bantly Collection  
© Eric Velhagen

**Julie Bell**  
American, born 1958  
*Pegasus Befriends the Muses*, 2018  
Oil on wood  
48 x 60 inches  
The Bennett Collection of Women Realists  
© Julie Bell

Eric Velhagen



*Enchanted: A History of Fantasy Illustration* has been organized by the Norman Rockwell Museum in Stockbridge, Massachusetts.

Julie Bell





# LaToya Ruby Frazier Flint Is Family In Three Acts

through 12.30.22

## Graphics Gallery

Don't miss your chance to see *Act I* in this three part series of photographs by LaToya Ruby Frazier. For five years, Frazier researched and collaborated with two poets, activists, mothers, and residents of Flint, Michigan—Shea Cobb and Amber Hasan—as they endured one of the most devastating ecological crises in U.S. history: the Flint water crisis. Resulting in a monumental body of photographs, video, and texts, Frazier developed *Flint Is Family In Three Acts* (2016–2021) to advocate for access to clean and safe drinking water for all regardless of race, religion, and economic status.

To bring these three acts together for the first time, Stamps Gallery at the University of Michigan initiated a partnership with the FIA and the Eli and Edythe Broad Art Museum at Michigan State University. *Act II* is on view at the Broad Museum until January 29, 2023 and *Act III* is on view at Stamps Gallery until January 14, 2023.

Organized by Stamps Gallery in partnership with the Eli and Edythe Broad Art Museum at Michigan State University, and the Flint Institute of Arts.

Curated by Srimoyee Mitra, Tracee Glab, and Steven L. Bridges with the assistance of Jennifer Junkermeier-Khan, Rachel Winter, and Rachael Holstege.



LaToya Ruby Frazier  
American, born 1982  
*The Flint Water Treatment Plant, Flint, Michigan*, 2016–2017  
Gelatin silver print  
20 x 24 inches  
Copyright LaToya Ruby Frazier  
Courtesy of the artist and Gladstone Gallery



LaToya Ruby Frazier  
American, born 1982  
*Shea's Aunt Denise and Uncle Rodney in Their Home on Foster Street Watching President Barack Obama Take a Sip of Flint Water, Flint, Michigan*, 2016–2017  
Gelatin silver print  
20 x 24 inches  
Copyright LaToya Ruby Frazier  
Courtesy of the artist and Gladstone Gallery

# Walk on the Wild Side Animals and other Creatures

through 2.5.23

## Ann K. Walch-Chan Gallery

Animals, both real and mythological, have occupied an important place in art from prehistoric to modern times, often carrying a rich variety of symbolic associations. These creatures have served as vehicles for allegory, moral instruction, and have stood as symbols for power and social status. From functional to decorative, the artworks in *Walk on the Wild Side* are drawn from the FIA's permanent collection and explore animals and their place in culture through various time periods and media.

Gerald Heffernon  
American, born 1946  
*Four-eyed Sighthound*, 1986  
Excelsior, wire, wood, fake fur, pigment, and newspaper  
21 x 48 x 20 inches  
Gift of Claire White, 2006.63

China  
Ming Dynasty, 1368–1644  
*Guardian Lion Ridge Tile*, not dated  
Ceramic  
17<sup>3</sup>/<sub>4</sub> x 28<sup>1</sup>/<sub>2</sub> x 14<sup>1</sup>/<sub>4</sub> inches  
Gift of Roslyn and Ben Shepps Family, 2010.42



Gerald Heffernon



# Breaking the Mold European Cast Glass

through 4.2.23

## Harris-Burger Gallery

The process of glass casting dates back to ancient Egypt and Mesopotamia and is the first glassmaking technique known to humankind. Unlike blown glass that is manipulated by hand while hot, cast glass is formed by using a mold. It is primarily broken down into two categories, hot casting and kiln casting, broadly defined by the temperature of the glass when it enters the mold. Within these categories there is significant room for exploration and innovation, making casting a diverse glassmaking technique.

The early 20th century was a turning point for European glassmakers as several schools were emphasizing glass as fine art rather than simply for manufacturing. Because of this, multiple generations of studio glass artists have adopted casting and used it to create artworks that emphasize aesthetics as well as cultural, political, and spiritual themes. This exhibition considers the impact of contemporary European glass artists on the history of cast glass.

Stanislav Libenský and Jaroslava Brychtová



Vladimir Bachorik

Stanislav Libenský  
Czech, 1921-2002  
Jaroslava Brychtová  
Czech, 1924-2020  
*Horizon*, 1992-2005  
Cast glass  
33 x 43 x 11 1/2 inches  
Courtesy of the Isabel  
Foundation, L2017.74  
Photo credit: Douglas  
Schaible Photography

Vladimir Bachorik  
Czech, born 1963  
*Escalation*, 2005  
Cast glass  
23 1/2 x 13 1/2 x 4 inches  
Courtesy of the Isabel  
Foundation, L2017.13  
Photo credit: Douglas  
Schaible Photography

NOVEMBER 1 - DECEMBER 30

## The Wake

*The Wake* was filmed at the Invertebrate Zoology department of the Carnegie Natural History Museum in Pittsburgh. In the department, there are old cabinets full of categorized butterfly specimens, neatly ordered in drawers. According to the artist, "I released 100 live butterflies [into the space] that flew among the dead specimens. The result is as if these dead specimens have now come to life. The work explores themes such as resurrection, life/death, release from captivity to freedom, and the transition from sleep to new consciousness. Leaving behind old memories and ideas to explore new ones. Conveying hope for a new discovered freedom."



Dana Levy  
Israeli  
*The Wake*, 2011  
Duration: 5:03 minutes  
Courtesy of Video Data Bank,  
[www.vdb.org](http://www.vdb.org), School of the Art  
Institute of Chicago

## Gallery News

Thanks to a donation by Security Credit Union, the Media Arts Gallery (now the Security Credit Union Gallery) was recently renovated and expanded to accommodate more visitors and provide a better viewing experience with a larger screen and a new high-definition projector. Media arts encompasses artworks that were created through the use of technology and new media (which includes interactive and immersive art, computer animation, video games, and more). The gallery is ideally suited for single-channel videos, played on a continuous loop, as well as small video installations.





## Featured Acquisition

Thermon Statom, who describes himself as a painter, sculptor, and craftsman, is a pioneer of the contemporary studio glass movement. He is most well known for his painted plate glass artworks. Although he was born in Winter Haven, Florida, in 1953, Statom spent his childhood in Washington, D.C. and currently resides in Omaha, Nebraska. Initially, he was interested in painting but began exploring three-dimensional art while completing his bachelor's degree at Rhode Island School of Design (RISD) in the 1970s.

After an experimental glassblowing session with Dale Chihuly at RISD, he became fascinated with the spontaneity of glass and its limitless possibilities. He attended Pilchuck Glass School during its inaugural year (1971) and experimented with glassblowing and using industrial sheet glass. The latter became his favorite material; however, he still spends time in the hotshop. He later studied at the Pratt Institute of Art and Design in Brooklyn, New York, and returned numerous times to Pilchuck to teach future glass artists.

From the beginning, Statom's artworks suggest the power of mundane, everyday objects. He started with a series of sheet glass houses. Enclosed within them were small glass pieces, remnants of his writings and drawings, and other found objects. Each panel of industrial glass was cut and glued together to make his desired shape and decorated with patches of paint. His gestural painting technique is reminiscent of the Abstract Expressionists of the postwar era and adds vibrant color to each artwork. Small houses soon transformed into larger forms including chairs, ladders, and rectangular wall pieces like *Nine Tries*. He considered this artwork a "divided painting" because it included nine compartments that are painted to look like large playing cards. Each compartment includes elements of his daily life: shards of glass from his studio, small vessels, pencils, paper playing cards, and a ruler.



**Thermon Statom**  
American, born 1953  
*Nine Tries*, 1993  
Painted glass  
76 x 48 x 4 inches  
Gift of the Pelavin Family,  
2021.268


## Recent Acquisitions

**Heywood Hardy**  
British, 1843–1933  
*The Rivals*, 1902  
Oil on canvas  
36 x 46 inches  
Gift to the Ann K. Walch-Chan Gallery FIA from the Walch family in memory of Bessie & Philip Walch

**Anthonie Palamedesz**  
Dutch, born Scotland, 1602–1673  
*A Young Boy with a Billy Goat*, 1655  
Oil on canvas  
51½ x 39½ inches  
Gift of Randolph P. Piper

**Keith Duncan**  
American, born 1967  
*The Funeral Repass*, 2015  
Acrylic on unstretched canvas with fabric  
71 x 108 inches  
Museum purchase with funds raised from the Community Gala



**Robert Pruitt**   
American, born 1975  
*That's the God in Me, Pardon You*, 2021  
Charcoal powder on paper  
84 x 60 inches  
Museum purchase with funds from the Mary Mallory Davis Collection Endowment

**Karsten Creightney**  
American, born 1976  
*12th & Resilience*, 2019  
Lithograph on paper  
24¾ x 35¼ inches  
Museum purchase with funds raised from the Flint Print Club

**Frederick Mershimer**  
American, born 1958  
*Niagara*, 2021  
Mezzotint on paper  
37⅝ x 27⅝ inches  
Museum purchase with funds raised from the Flint Print Club

**Peter Milton**  
American, born 1930  
*Passage III*, 1972  
Etching and engraving on paper  
25 x 37 inches  
Gift of John and Sabina Szoke

**Peter Milton**  
American, born 1930  
*Passage IV*, 1973  
Etching and engraving on paper, direct photo transfer of *Julia Passing*  
25 x 36 inches  
Gift of John and Sabina Szoke

**Peter Milton**  
American, born 1930  
*The First Gate*, 1974  
Etching and engraving over altered transfer of *Mornings with Judd (Second State)*  
25 x 36 inches  
Gift of John and Sabina Szoke

**Peter Milton**  
American, born 1930  
*Les Belles et la Bête II: Before the Hunt*, 1978  
Etching and engraving on paper  
22 x 39 inches  
Gift of John and Sabina Szoke

**Peter Milton**  
American, born 1930  
*Interiors I: Family Reunion*, 1984  
Etching and engraving on paper  
20 x 36 inches  
Gift of John and Sabina Szoke

**Peter Milton**  
American, born 1930  
*Interiors II: Stolen Moments*, 1986  
Etching and engraving on paper  
30 x 24 inches  
Gift of John and Sabina Szoke

**Peter Milton**  
American, born 1930  
*Interiors V: Water Music*, 1988  
Etching and engraving on paper  
30 x 24 inches  
Gift of John and Sabina Szoke

**Peter Milton**  
American, born 1930  
*Interiors VII: The Train from Munich*, 1991  
Etching and engraving on paper  
20 x 36 inches  
Gift of John and Sabina Szoke

**Peter Milton**  
American, born 1930  
*Points of Departure III: Twenty Century Ltd*, 1998  
Etching and engraving on paper  
24 x 38 inches  
Gift of John and Sabina Szoke

**Peter Milton**  
American, born 1930  
*Points of Departure IV: Pavane*, 1999  
Etching and engraving on paper  
18 x 28 inches  
Gift of John and Sabina Szoke

**Rick Ayotte**  
American, born 1944  
*Hummingbird*, not dated  
Glass  
3¼ x 2 inches diameter  
Gift of the Diane J. Miller Trust

**Rick Ayotte**  
American, born 1944  
*Miniature*, not dated  
Glass  
2 x 1¼ inches diameter  
Gift of the Diane J. Miller Trust

**Harold Bennett**  
American  
**Guernsey Glass Company**  
American, founded 1967  
*Faceted*, not dated  
Glass  
3⅞ x 2½ inches diameter  
Gift of the Diane J. Miller Trust

**Rollin Bodley**  
American, 1942–2018  
*Pink and Brown Swirl*, not dated  
Glass  
2¾ x 2¾ inches diameter  
Gift of the Diane J. Miller Trust

**Randall Grubb**  
American, born 1961  
*Mistletoe*, not dated  
Glass  
2¾ x 2¾ inches diameter  
Gift of the Diane J. Miller Trust

**Steven Lundberg**  
American, 1953–2008  
*Pink Floral*, not dated  
Glass  
3½ x 3 inches diameter  
Gift of the Diane J. Miller Trust

**David Maul**  
American, born 1953  
*Untitled*, not dated  
Glass  
3⅞ x 2½ inches diameter  
Gift of the Diane J. Miller Trust

**David Maul**  
American, born 1953  
*Untitled*, not dated  
Glass  
2½ x 3 inches diameter  
Gift of the Diane J. Miller Trust

**Bernie Merritt**  
American  
*Untitled*, not dated  
Glass  
3 x 3 inches diameter  
Gift of the Diane J. Miller Trust

**Orient and Flume**  
American, founded 1972  
*Bird and Cacti*, not dated  
Glass  
3¼ x 2⅞ inches diameter  
Gift of the Diane J. Miller Trust

**Richard Ritter**  
American, born 1940  
*Orange with Butterfly*, not dated  
Glass  
4½ x 2½ inches diameter  
Gift of the Diane J. Miller Trust

**Richard Ritter**  
American, born 1940  
*Untitled*, not dated  
Glass  
3¾ x 2½ inches diameter  
Gift of the Diane J. Miller Trust

**Ken Rosenfeld**  
American, born 1950  
*Cherries and Blossom*, not dated  
Glass  
3 x 2¼ inches diameter  
Gift of the Diane J. Miller Trust

**Ken Rosenfeld**  
American, born 1950  
*Insect and Flowers*, not dated  
Glass  
3¼ x 2½ inches diameter  
Gift of the Diane J. Miller Trust

**Ken Rosenfeld**  
American, born 1950  
*Pink and Blue Flowers*, not dated  
Glass  
2¾ x 2 inches diameter  
Gift of the Diane J. Miller Trust

**Ken Rosenfeld**  
American, born 1950  
*Purple, Red and Yellow Flowers*, not dated  
Glass  
2½ x 2 inches diameter  
Gift of the Diane J. Miller Trust

**Gordon Smith**  
American, born 1959  
*Water Lily*, not dated  
Glass  
3¼ x 2¼ inches diameter  
Gift of the Diane J. Miller Trust

**Vandermark Merritt Glass Studios**  
American, founded in 1972  
*Perfume Bottle*, not dated  
Glass  
5½ x 3⅞ x 1½ inches diameter  
Gift of the Diane J. Miller Trust

**Evelyn Cheromiah**

Laguna, 1928–2013  
**Seed Pot**, not dated  
 Earthenware  
 2¾ x 2½ inches diameter  
 Gift of the Day-Levine Family

**Eveningstar**

Acoma  
**Pot**, not dated  
 Earthenware  
 4 x 4½ inches diameter  
 Gift of the Day-Levine Family

**Marietta Juanico**

Acoma  
**Seed Pot**, not dated  
 Earthenware  
 3¾ x 4¼ inches diameter  
 Gift of the Day-Levine Family

**Helen Naha (Feather Woman)**

Tewa Hopi, 1922–1993  
**Pot**, not dated  
 Earthenware  
 2 x 4¼ inches diameter  
 Gift of the Day-Levine Family

**Bonnie Sahnme Chapella Nampeyo**

Hopi, born 1958  
**Pot**, ca. 1980  
 Earthenware  
 2½ x 3¾ inches diameter  
 Gift of the Day-Levine Family

**Melda Nampeyo**

Hopi, born 1959  
**Pot**, not dated  
 Earthenware  
 2¾ x 4¼ inches diameter  
 Gift of the Day-Levine Family

**Serafina Ortiz**

Cochiti, 1931–2007  
**Owl**, not dated  
 Earthenware  
 4¼ x 3 x 2½ inches  
 Gift of the Day-Levine Family

**Jaret Rodriguez**

San Ildefonso  
**Incised Redware**, not dated  
 Earthenware  
 1¾ x 3¾ inches diameter  
 Gift of the Day-Levine Family

**Sadie Tsipa**

Zuni, 1915–2010  
**Pot**, 1940–60  
 Earthenware  
 5 x 6½ inches diameter  
 Gift of the Day-Levine Family

**Acoma**

**Pot**, 1950–60  
 Earthenware  
 3½ x 4¾ inches diameter  
 Gift of the Day-Levine Family

**Hopi**

**Pot**, not dated  
 Earthenware  
 1½ x 6¼ inches diameter  
 Gift of the Day-Levine Family

**Hopi**

**Pot**, not dated  
 Earthenware  
 3 x 5½ inches diameter  
 Gift of the Day-Levine Family

**Hopi**

**Pot**, 1930–40  
 Earthenware  
 5¼ x 7 inches diameter  
 Gift of the Day-Levine Family

**Hopi**

**Pot**, 1940–50  
 Earthenware  
 2 x 5½ inches diameter  
 Gift of the Day-Levine Family

**Laguna**

**Pot**, not dated  
 Earthenware  
 3¼ x 3¾ inches diameter  
 Gift of the Day-Levine Family

**South America**

**Modern Peruvian revivalist pitcher and cups**, not dated  
 Earthenware  
 Pitcher: 7½ x 4¾ inches diameter  
 Cups: 2¾ x 2 inches diameter  
 Gift of the Day-Levine Family

**South America**

**Modern Peruvian revivalist pot**, not dated  
 Earthenware  
 3¾ x 4½ inches diameter  
 Gift of the Day-Levine Family

**Bennett Bean**

American, born 1941  
**Blue with Silver Lining**, not dated  
 Painted ceramic  
 4⅝ x 8 inches diameter  
 Gift of the Pelavin Family

**Bennett Bean**

American, born 1941  
**Gold Vessel**, not dated  
 Painted ceramic  
 6¼ x 8¼ inches diameter  
 Gift of the Pelavin Family

**Bennett Bean**

American, born 1941  
**Tall Ceramic**, not dated  
 Painted ceramic  
 14⅝ x 5½ inches diameter  
 Gift of the Pelavin Family

**Dwight Davidson**

American, born 1949  
**Untitled**, 1990  
 Stoneware  
 13¼ x 24¾ x 19½ inches  
 Gift of the Pelavin Family

**Richard Devore**

American, 1933–2006  
**Bowl**, 1981  
 Stoneware  
 5¼ x 12⅞ x 12½ inches  
 Gift of the Pelavin Family

**Richard Devore**

American, 1933–2006  
**Vessel #474**, 1994  
 Stoneware  
 11¼ x 9¼ x 7¾ inches  
 Gift of the Pelavin Family

**Wayne Higby**

American, born 1943  
**Untitled**, 1998  
 Earthenware  
 8 x 9 x 3 inches  
 Gift of the Pelavin Family

**Marilyn Gelfman Karp**

American, born 1939  
**Medusa**, not dated  
 Mixed media  
 13 x 7½ inches diameter  
 Gift of the Pelavin Family

**Michael Lucero**

American, born 1953  
**Double Vessel NYC**, 1995  
 Earthenware  
 7 x 11 x 3½ inches  
 Gift of the Pelavin Family

**Bertil Vallien**

Swedish, born 1938  
**Head**, not dated  
 Glass  
 5 x 8¼ x 3¾ inches  
 Gift of the Pelavin Family

**Patti Warashina**

American, born 1940  
**Flower Head**, 1995  
 Ceramic  
 24 x 14½ x 8½ inches  
 Gift of the Pelavin Family

**Cambodia**

**Vishnu**, 12th century  
 Bronze  
 14½ x 6 x 3½ inches  
 Gift of Robert B. Jacobs

**Cambodia**

**Vishnu on Garuda**, 12th century  
 Bronze  
 10 x 6¼ x 1½ inches  
 Gift of Robert B. Jacobs

**Cambodia**

**Prajnaparamita**, Bayon period (1182–1218)  
 Bronze  
 14 x 6½ x 4 inches  
 Gift of Robert B. Jacobs

**Cambodia**

**Head**, 8th century  
 Sandstone  
 8¾ x 5 x 5 inches  
 Gift of Robert B. Jacobs

**Peter Milton**

American, born 1930  
**The Jolly Corner Suite**, 1971  
 Complete set of 21 etchings and engravings on paper  
 Approx. 19½ x 15 inches each  
 Gift of Michael Farrell and Marc Herrick

**George Schreiber**

American, born Belgium, 1904–1977  
**Rain**, ca. 1944  
 Lithograph on paper  
 9¾ x 13⅞ inches  
 Gift of Allen Pechenik and Nancy Pechenik Schnitzler

**Eric Hansen**

American  
**Floral Bouquet**, 2014  
 Lampworked glass  
 3 x 2¾ inches diameter  
 Gift of Ralph Edwards

**Carole Harris**

American, born 1943  
**Uncharted Territory**, 2022  
 Linocut on paper  
 18 x 24 inches  
 Gift of Michael Farrell and Marc Herrick

**Tylonn Sawyer**

American, born 1976  
**White on White: Stone Mountain**, 2022  
 Linocut on paper  
 18 x 24 inches  
 Gift of Michael Farrell and Marc Herrick

**Hannes Bok**

American, 1914–1964  
**Lazy Afternoon**, 1943  
 Lithograph on paper  
 9¼ x 13¾ inches  
 Gift of Allen Pechenik and Nancy Pechenik Schnitzler

**John Costigan**

American, 1888–1972  
**Mother and Child**, 1930  
 Etching on paper  
 7⅞ x 9⅞ inches  
 Gift of Allen Pechenik and Nancy Pechenik Schnitzler

**Gordon Smith**

American, born 1959  
**Blackberries on Straw**, 2010  
 Lampworked glass  
 3 x 2½ inches diameter  
 Gift of Ralph Edwards

**Whitefriars Glasshouse**

English, founded in 1680  
**Lobed Close Pack Millefiori**, 1979  
 Glass  
 3¼ x 2 inches diameter  
 Gift of Ralph Edwards

**Rene Lalique**

French, 1860–1945  
**Pavot (Poppy)**, 1922  
 Glass  
 3 x 3½ inches diameter  
 Gift of the Estate of Susan Steiner Bolhouse

**Rene Lalique**

French, 1860–1945  
**Untitled**, ca. 1920  
 Glass  
 1¼ x 3¼ inches diameter  
 Gift of the Estate of Susan Steiner Bolhouse

**Richard Segalman**

American, 1934–2021  
**Pigeon-Toed Stance**, ca. 1995  
 Monoprint on paper  
 11⅞ x 12⅝ inches  
 Gift of William, Barbara, Kristine and Juliana Meek

**Richard Segalman**

American, 1934–2021  
**Street Scene**, 2001  
 Monoprint on paper  
 11½ x 15¾ inches  
 Gift of William, Barbara, Kristine and Juliana Meek

**Engravings after: Hubert François Gravelot**

French, 1699–1773  
 Publisher: **Bossange, Masson & Besson**  
 2 Volume book with engravings, published in 1792  
**Torquato Tasso, La Gerusalemme Liberata** (1591)  
 1⅝ x 5⅞ x 7⅝ inches  
 Gift of Dr. Jamile Trueba Lawand

**Edouard Bénédictus**

French, 1878–1930  
**Relais**, 1930  
 Pochoir in colors and metallic inks on heavy wove paper  
 15 plates in portfolio  
 19⅞ x 16⅞ inches  
 Gift of the Flint Public Library

**Acoma**

**Vase**, pre-1910  
 Earthenware  
 11 x 12½ inches diameter  
 Gift of Robert and Susan Soderstrom in the name of Arley W. Merriner, Streator, Illinois

**Donald Cronkhite**

American, born 1966  
**Ten Thousand Branches**, 2019  
 Oil on Linen  
 41½ x 54½ inches  
 Gift of Donald Cronkhite

**Louise Nevelson**

American, born Russia, 1900–1988  
**Nursery Rhyme (from the Façade portfolio)**, 1966  
 Screenprint on acetate  
 23 x 17½ inches  
 Gift of Elizabeth B. Bishop

**William Orling**

American  
**West on Garfield**, 1974  
 Oil on panel  
 16 x 20¼ inches  
 Gift of Patricia Rajala Higgins

**Tajh Rust**

American, born 1989  
**Subject IV (Sula)**, 2018  
 Oil on canvas  
 32 x 32 inches  
 Gift of Nike Opadiran

The artworks listed here are on loan from the FIA to the following exhibitions:

**Roy Lichtenstein: History in the Making, 1948–1960****Nasher Museum of Art at Duke University**

Durham, North Carolina  
 8.25.22 – 1.8.23

**Roy Lichtenstein**

American, 1923–1997  
**Mechanism, Cross Section**, ca. 1954  
 Oil with sgraffito on canvas  
 40 x 54 inches  
 Gift of Messrs. Samuel N. Tomkin and Sidney Freedman, 1956.2



Lillian Holm

**Scandinavian Design and the United States****Los Angeles County Museum of Art**

Los Angeles, California  
 10.9.22 – 2.5.23

**Lillian Holm**

American, born Sweden, 1896–1979  
**First Sight of New York**, ca. 1930  
 Linen, cotton, wool, viscose rayon  
 82 x 64½ inches  
 Gift of Mrs. Lillian Holm in memory of Ralph T. Sayles, 1965.14



**NOVEMBER 4, 5 @ 7:30p**

**NOVEMBER 6 @ 2:00p**

### Miracle

(Romania, Czech Republic, Latvia, 2021)  
Directed by Bogdan George Apetri, 118 min.,  
subtitled, not rated

In the style of Romanian New Wave, director Bogdan George Apetri's third feature film is a crime drama told in two chapters. The first chapter tells the story of Christina, a young girl sneaking away from a convent. In the second chapter, detective Marius Preda retraces Christina's steps. *Miracle* is a story of mystery and intrigue, innocence and evil.



#### Admission

\$7 non-members  
\$6 FIA members  
\$5 FOMA members

Tickets available  
at the door or at  
[flintarts.org/films](http://flintarts.org/films)

**NOVEMBER 11, 12 @ 7:30p**

**NOVEMBER 13 @ 2:00p**

### My Donkey, My Lover & I

(France, 2020) Directed by Caroline Vignal, 96 min.,  
subtitled, not rated

In this French comedy, inspired by Robert Louis Stevenson's memoir *Travels with a Donkey in the Cévennes*, fourth-grade teacher Antoinette decides to follow her married lover on his family vacation to Cévennes. Paired with a stubborn and protective donkey named Patrick, who quickly becomes Antionette's companion and therapist, the journey becomes one of self-realization.



**NOVEMBER 18, 19 @ 7:30p**

**NOVEMBER 20 @ 2:00p**

### Decision to Leave

(Korea, 2022) Directed by Park Chan-wook, 138 min.,  
subtitled, not rated

*Decision to Leave* is a noir romance from 2022 Cannes Best Director winner Park Chan-wook. In his latest thriller, a hiker found dead at the foot of a mountain leads to an investigation of his widow. As the investigation progresses, the lead detective begins to fall in love with their main suspect, the deceased's widow.



Films are  
supported by



Screenwriter  
sponsor



Media  
sponsor



**DECEMBER 2, 3 @ 7:30p**

**DECEMBER 4 @ 2:00p**

### A Chiara

(Italy, 2020) Directed by Jonas Carpignano, 121 min.,  
subtitled, rated R

The third in Jonas Carpignano's neo-neorealistic "Calabrian" movies, *A Chiara* is a tragic coming of age story. After disappearing from his daughter's birthday party, Chiara decides to search for her father. While searching for him, Chiara discovers that everything she thought she knew about her family and her life was a lie.

**DECEMBER 9, 10 @ 7:30p**

**DECEMBER 11 @ 2:00p**

### My Old School

(U.K., 2022) Directed by Jono McLeod, 104 min., not rated

Director Jono McLeod returns to his high school for a nostalgic look at a strange but true story of a former classmate. Based on Scotland's most notorious high-school hoax, Alan Cumming stars as Brandon Lee in the documentary about identity fraud.

**DECEMBER 16, 17 @ 7:30p**

**DECEMBER 18 @ 2:00p**

### A Man of Integrity

(Iran, 2017) Directed by Mohammad Rasoulof, 113 min.,  
subtitled, rated PG-13

Cannes Un Certain Regard winner, *A Man of Integrity* has been called "a work of political defiance and of artistic audacity" by *The New Yorker*. In an attempt to reopen his water source, goldfish farmer Reza is attacked by a local group of thugs. Unwilling to compensate the group or to pay bribes he quickly realizes the price he and his family must pay for his morality.



**NOVEMBER 25, 26 @ 7:30p**

**NOVEMBER 27 @ 2:00p**

### Queen of Glory

(U.S., 2021) Directed by Nana Mensah, 78 min., not rated

Tribeca winner for Best New Narrative Director, *Queen of Glory* has been described as a love letter to immigrant daughters. Sarah (Nana Mensah) a doctorate student about to follow her married boyfriend to Ohio, must return to the Bronx to run her mother's bookstore bequeathed to her after her mother's untimely death. Sarah's personal journey is a struggle with familial expectations while trying to stay true to herself.



Film titles and dates are  
subject to change.



The FIA Art School is dedicated to the enrichment of the community through individual academic exposure to the visual arts. Highly qualified faculty offer instruction in drawing, painting, glass arts, weaving, photography, animation, ceramics, sculpture, college portfolio development, and early childhood art courses. Since 1928, the Art School has helped students develop a wide range of artistic goals and skill levels.

The Art School's winter session runs from December 5 through March 12. Registration opens Monday, November 14. Visit [flintarts.org/learn/news](http://flintarts.org/learn/news), call 810.237.7315, or email [arted@flintarts.org](mailto:arted@flintarts.org) for more information.



My Proulx, Faculty

**\*FIA members  
receive 20% off  
tuition**

## ADULTS

### Photo Editing Basics with Adobe Lightroom

**Beginner/Intermediate**

Transform your photos from ordinary to extraordinary using digital editing techniques with Adobe Lightroom. Learn exposure, cropping, color grading, and other tricks for making your images pop! Students must have a laptop or tablet with Adobe Lightroom installed. **Teens welcome.**

3/1-3/15 (WE) 5:30p-6:30p  
Tuition: \$50\*



Gwen Darling  
Faculty

### Foo Dogs in Ceramics

**Beginner/Intermediate/Advanced**

Foo Dogs are benevolent guardian animals from traditional Chinese Folklore. Their bodies are a collage of protective parts like horns, fangs, wings, talons and scales. They are always made in pairs and we will learn why as we create our own two guardians out of clay in this workshop. Materials included. (Please note this class meets three times per week for two weeks.) **Teens welcome.**

12/5-12/18 (TU, TH, SA)  
5:30p-7:30p  
Tuition: \$132\*

### Two-Day Workshop Facial Features

**Beginner/Intermediate/Advanced**

This two-day workshop will focus on how to draw different facial features including the eyes, nose, mouth, and ears. Students will work primarily in charcoal. Supplies not included. **Teens welcome.**

12/8-12/15 (TH) 10a-2p  
Tuition \$80\*

## TEENS

### Nesting Bowls

**Ages 13-17**

Pinch a set of ceramic bowls that stack neatly one inside the next. Students will spend the first session sculpting their bowls and the next one will be dedicated to decorating and glazing. (Bowls will be fired and ready for pick up approximately one week after class ends.) Materials included.

12/11-12/18 (FR) 3p-5p  
Tuition: \$60\*

**Winter Term  
Dec 5 - Mar 12**

**Register at [flintarts.org](http://flintarts.org),  
in-person or call  
810.237.7315**

### Intro to Flat Glass

**Beginner/Intermediate/Advanced**

Learn the fundamentals of flat glass fusing and slumping and gain an understanding of kiln glass theory, basic color chemistry and simple cold working techniques to create multiple fused glass projects. **Teens welcome.**

1/21- 3/4 (TU) 1:30a-4:30p  
Tuition \$273\*



Patrick Warner  
Student

### One-Day Workshop Paint a Portrait of Place

**Beginner/Intermediate/Advanced**

Celebrate a cherished place by painting its portrait using acrylic paints, modeling paste and colored glazes. Learn to simplify your scene into separate shapes of color and value to capture the likeness of your subject matter, approaching it loosely or highlighting distinctive details. Materials and visual aids are provided and students are encouraged to gather images of their family home, local hangout, backyard view, etc. to serve as source material for their paintings. Acrylic materials provided; oil painters welcome to bring their own paints **Teens welcome.**

3/11 (SA) 11a-5p  
Tuition \$100\*

### Free Glassblowing Demonstrations

Join us every Saturday and Sunday for free glassblowing demonstrations thanks to McLaren Health Care. Demonstrations are held in the Art School's state-of-the-art hot shop and begin on the hour 11a-4p on Saturdays and are ongoing 1p-4p on Sundays.

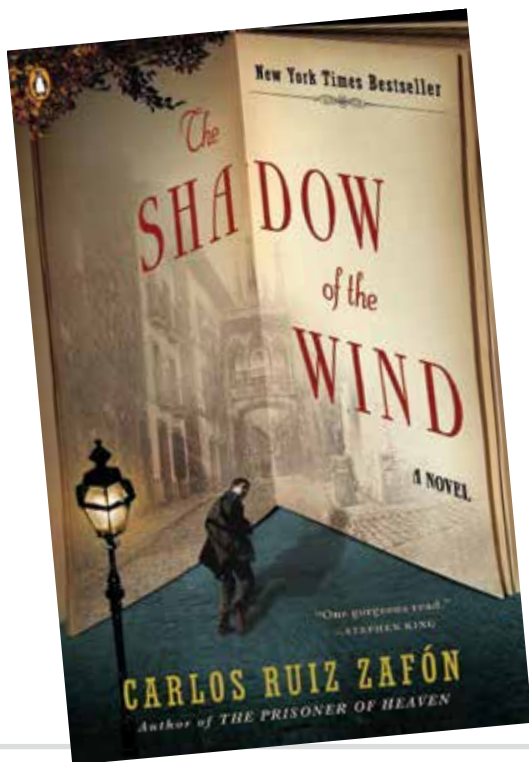
Glassblowing  
Demonstrations  
are free thanks to

**McLaren**  
HEALTH CARE





FIA book discussions focus on works of fiction and non-fiction related to art, art museums, or FIA collections. The first meeting for each book sets the stage by exploring artists and artwork related to the selected book. Two weeks later, the book is discussed.



## The Shadow of the Wind

By Carlos Ruiz Zafón

**Part 1: Art History Presentation**

**NOVEMBER 2**

**1:30p**

**Part 2: Book Discussion**

**NOVEMBER 16**

**1:30p**

Isabel Hall

Barcelona, 1945: A city slowly heals in the aftermath of the Spanish Civil War, and Daniel, an antiquarian book dealer's son who mourns the loss of his mother, finds solace in a mysterious book entitled *The Shadow of the Wind*, by one Julián Carax. But when he sets out to find the author's other works, he makes a shocking discovery: someone has been systematically destroying every copy of every book Carax has written. In fact, Daniel may have the last of Carax's books in existence. Soon Daniel's seemingly innocent quest opens a door into one of Barcelona's darkest secrets—an epic story of murder, madness, and doomed love.

Book is available in the Museum Shop

All Education programs are free of charge

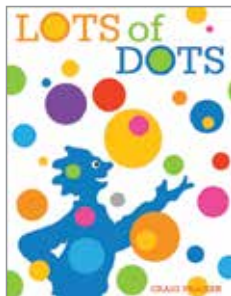
## TODDLER ART EXPLORERS

Bring your toddler for some art-filled fun at the museum. Each month we read a story, go on a gallery hunt, and investigate art materials in the studio. Recommended for ages 18-36 months, but all are welcome.

### Exploring Circles

**NOVEMBER 4**

**11:00a-11:45a • Studio 1**



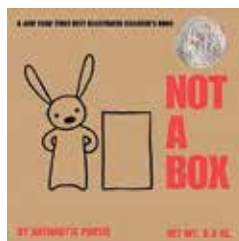
Listen to *Lots of Dots* by Craig Frazier, hunt for circles in artworks in the galleries, and print with round objects in the studio.

### Exploring Rectangles

**DECEMBER 2**

**11:00a-11:45a • Studio 1**

Listen to *Not a Box* by Antoinette Portis, hunt for rectangles in artworks in the galleries, and turn a rectangle into something else in the studio.



Family programs enable parents and children to explore the visual arts at the FIA. They are designed for children ages four and up and accompanying adults and offered free of charge. Groups of six or more, please contact the Education Department to make a reservation.

## Family Yoga in the Galleries

**NOVEMBER 13**

**2:00p • Galleries**

Families are invited to tour the galleries and practice yoga poses inspired by artworks in our collection with art educator and yoga teacher Michelle Dummer.



## Baby Tours

**NOVEMBER 13**

**1:00p • Galleries**

See the museum through the eyes of your baby on this free 30-minute gallery tour! As we look at artworks together we will tune in to your child's cues to discover their visual preferences and learn skills to support brain development. For the best art viewing experience, front carriers are recommended. Strollers are allowed, but please no backpacks. Meet at the Visitor Services desk in the Lobby; no advance registration is required. Recommended for infants up to 18 months with an adult.



For additional information on Education programming, contact the Education Department at 810.237.7314 or [education@flintarts.org](mailto:education@flintarts.org).

## PRESCHOOL PLAYDATES

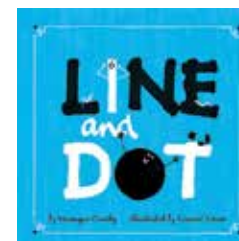
Introduce your little one to the world of art! Playdates at the FIA include listening to a storybook, looking at artwork in the galleries, and exploring a range of art-making materials in the studio. Recommended for ages 3-5, but all are welcome.

### Making Marks

**NOVEMBER 18**

**11:00a-11:45a • Studio 1**

Listen to *Line and Dot* by Veronique Cauchy, look for lines and dots in artworks in the galleries, and see how many things you can draw with lines and dots in the studio.



### Winter Activities

**DECEMBER 16**

**11:00a-11:45a • Studio 1**

Listen to *Time to Sleep* by Denise Fleming, look for winter artworks in the galleries, and create an artwork that shows your favorite winter activities in the studio.





## NOVEMBER 2

**Saving Notre Dame**

Follow an international team of architects, engineers, and scientists as they race to protect and ultimately rebuild the iconic medieval structure after the devastating 2019 fire. 60 min.

## NOVEMBER 9

**Rothko: Pictures Must Be Miraculous**

This program explores Mark Rothko's tumultuous journey and includes interviews with his daughter Kate and son Christopher. 54 min.

## NOVEMBER 16

**Modigliani and His Secrets**

Based on an ongoing scientific study, the film reveals the secrets behind the myths surrounding Modigliani. 53 min.

## NOVEMBER 23

**Adrian Stimson**

Acclaimed Blackfoot artist Adrian Stimson creates performance, photography, sculpture, and paintings that address the Indigenous experience in the Canadian west. 23 min.

**Shelley Niro**

Shelley Niro has been working tirelessly as a painter, photographer, and filmmaker for more than three decades, and she's only now receiving wide recognition for her visionary work, which challenges stereotypical representations of Indigenous women in Canadian culture. 23 min.

For additional information on Education programming, contact the Education Department at 810.237.7314 or [education@flintarts.org](mailto:education@flintarts.org).

## NOVEMBER 30

**Keith Haring - Street Art Boy**

International art sensation Keith Haring blazed a trail through the legendary art scene of 1980s New York and revolutionized the worlds of pop culture and fine art. 53 min.

## DECEMBER 7

**Ken Burns: The Shakers**

This story of devotion, invention, and outstanding ingenuity in architecture and furniture craft was filmed at existing Shaker locations, with music re-created from authentic songs. 60 min.

## DECEMBER 14

**The American Artist**

This is a historical documentary about George Caleb Bingham, a respected early American portrait painter. 58 min.

## DECEMBER 21

**Quilts**

Quilts hold history, share culture, and tell stories that would otherwise not be told. 55 min.

Art à la Carte is a series of informative programs focusing on the arts. It is offered **free of charge** on Wednesdays at 12:15p. Participants are encouraged to bring lunch or pick up something from The Palette Café. Coffee, tea, and cookies are provided. All programs are held in the FIA's Isabel Hall unless otherwise noted.

Art à la Carte Sponsors

**Merkley-Elderly Charitable Trust**

**WCMU PUBLIC MEDIA**

## The Search for the Lost Shapira Dead Sea Scroll—Was it Genuine or a Modern Forgery?

November 9

6:00p • FIA Theater



Dr. James Tabor

In 1878, fragments of what appeared to be an ancient copy of portions of the biblical book of Deuteronomy were found in a cave along the east side of the Dead Sea. Purchased by a Jerusalem antiquities dealer, Moses Shapira, he presented them to scholars who declared them to be modern forgeries. The Shapira fragments were eventually auctioned off and disappeared—but recently headlines in *The New York Times* asked—"What if they were real?" Scholars have proposed that the case be reopened in the light of our current

knowledge of ancient texts. If authentic, they would be the oldest copies of biblical texts ever discovered.

Dr. James Tabor's PhD is from University of Chicago, and he is a Professor in the Department of Religious Studies at the University of North Carolina in Charlotte where he teaches Christian origins and ancient Judaism, and served as Chair for a decade.



Shapira Scroll (partial)

Complimentary Admission

## Leonardo da Vinci, the Last Supper, and the Art of Throwing a Great Dinner Party

December 7

6:00p • FIA Theater



Dr. Rocky Ruggiero

This presentation will explore the evolution of the Last Supper in Italian art, beginning with early Christian images through to the late Renaissance, including one of the world's most famous works of art: Leonardo da Vinci's *Last Supper*.

Dr. Rocky Ruggiero has a PhD in Art History and Visual Culture from the University of Exeter and has been a professor of art and architectural history since 1999.



Leonardo da Vinci, Italian, 1452-1519, *Last Supper*, ca. 1495-1498, Oil, tempera, fresco, 280 x 350 inches. Santa Maria delle Grazie, Milan.



*The Sheppy Dog Fund Lecture has been established to address the topics of art, religion, and history, and is funded by The Sheppy Dog Fund, Dr. Alan Klein, Advisor.*



Coffee with a Curator is a focused, theme-oriented presentation on a variety of topics related to the FIA's permanent collection and special exhibitions. The talk is presented by one of the FIA's curators or an invited speaker. Coffee will be served. Time will follow each talk for questions or gallery exploration.

Sponsored by  
**BIGGBY**  
COFFEE  
3093 S Linden Rd  
Flint, MI



Complimentary  
Admission

November 14

10:30a-11:30a • Isabel Hall

Enchanted: Exploring Stories and Myths

Many are familiar with common fairy tales and mythologies like *Little Red Riding Hood*, *Snow White*, and *Hercules* but where did these stories originate and how have they evolved into what we know today? This talk by Assistant Curator Rachael Holstege will look at some of the stories depicted in the *Enchanted: A History of Fantasy Illustration* exhibition and explore how other artists have approached the topics throughout time.

Stanislav Libenský  
Czech, 1921-2002  
Jaroslava Brychtová  
Czech, 1924-2020  
*Blue Pyramid*, 1994  
Cast glass  
33 x 47 x 11 1/2 inches  
Courtesy of the Isabel  
Foundation, L2017.70  
Photo credit: Douglas  
Schaible Photography



Gustave Doré  
French, 1832-1883  
*Little Red Riding Hood*, 1880  
9 1/4 x 10 1/2 inches  
Private Collection

December 13

10:30a-11:30a • Isabel Hall

Libenský and Brychtová

Few artists have made a greater impact on the studio glass movement as Stanislav Libenský and Jaroslava Brychtová. These world-renowned Czech artists created some of the most significant cast glass sculptures of the 20th century, while also teaching and inspiring multiple generations of artists. Associate Curator Sarah Kohn will explore their legacy and artworks at the FIA.



FLINT CULTURAL CENTER



# 37th Annual Holiday Walk

12.6.22 5:00p-8:00p

TREE LIGHTING AT 5:15 IN GREENSPACE BETWEEN  
FLINT INSTITUTE OF ARTS, LONGWAY PLANETARIUM & FLINT REPERTORY THEATRE

Visit Santa Claus and enjoy caroling, festive live music, planetarium shows, arts and crafts, fun holiday activities, refreshments and more!

This is a FREE Community event; however, we ask those who can to bring personal care items, clothing, and non-perishable food that will be donated to Food Bank of Eastern Michigan.

FLINTCULTURALCENTER.ORG  
810.237.7333

"This program and/or service is funded in whole or in part by the Genesee County Arts Education and Cultural Enrichment Millage funds. Your tax dollars are at work."



SAVE THE DATE





## 22nd Annual Wine Tasting

# CASINO ROYALE

## SATURDAY

# 4.15.23



Wine Tasting



# A CELEBRATION OF PRINTS IN FLINT

**November 18 & 19**

Isabel Hall

**Flint Print Club  
Members Only  
Preview and  
Reception**



**NOVEMBER 18 • 6p-8p**

- The print inventory of two long-standing Detroit-area print dealers (Paramour Fine Arts and Stewart & Stewart) and works by local artists from Flint's Buckham Gallery will be available for purchase with prices ranging from \$100 to several thousand dollars.
- View a printmaking demonstration.
- Receive the Print Club's 2022 print by Hubert Phipps (if already pre-purchased or purchased during this event).



**Open to Members  
and Public**

**NOVEMBER 19 • 10a-5p**

- Prints from the inventory of Paramour Fine Arts and Stewart & Stewart, and works by local artists from Flint's Buckham Gallery available for sale.
- Printmaking demonstration from 1p-3p.
- Register in advance for a limited access tour of the Piper Print Library, 11a & 2p. Contact Peter Ott to register at pott@flintarts.org or 810.234.1695, space is limited.



## NOVEMBER

**2 WED**

12:15p

**Art à la Carte**

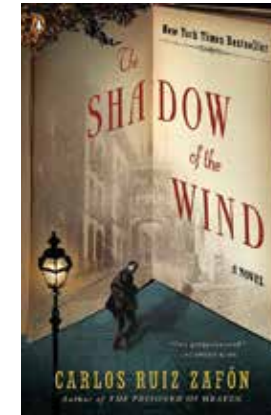
*Saving Notre Dame*

1:30p

**Book Discussion:**

**Part One**

*The Shadow of the Wind*



**4 FRI**

11:00a

**Toddler Art  
Exploration**

*Exploring Circles*

7:30p

**FOMA Film**  
*Miracle*

**5 SAT**

10:00a

**Arts & Fine  
Crafts Fair**

*First Frost*

7:30p

**FOMA Film**  
*Miracle*

**6 SUN**

11:00a

**Arts & Fine Crafts Fair**

*First Frost*

2:00p

**FOMA Film**  
*Miracle*

**9 WED**

12:15p

**Art à la Carte**

*Rothko: Pictures Must*

*Be Miraculous*

6:00p

**The Sheppy Dog  
Fund Lecture**

*The Search for the  
Lost Shapira Dead Sea  
Scroll—Was it Genuine  
or a Modern Forgery?*



**11 FRI**

7:30p

**FOMA Film**

*My Donkey, My Lover  
& I*

**12 SAT**

7:30p

**FOMA Film**

*My Donkey, My Lover  
& I*

**13 SUN**

1:00p

**Family Program**

*Family Yoga*

2:00p

**Family Program**

*Baby Tour*

2:00p

**FOMA Film**

*My Donkey, My Lover  
& I*

**14 MON**

10:30a

**Coffee with a Curator**

*Enchanted: Exploring  
Stories and Myths*



**16 WED**

12:15p

**Art à la Carte**

*Modigliani and His  
Secrets*

1:30p

**Book Discussion:  
Part Two**

*The Shadow of the  
Wind*

**18 FRI**

11:00a

**Preschool Playdates**

*Making Marks*

6:00p

**Prints in Flint**

*Flint Print Club  
Members Only Preview  
and Reception*

7:30p

**FOMA Film**

*Decision to Leave*

**19 SAT**

10:00a

**Prints in Flint**

*Open to Members and  
Public*

1:30p

**Youth Member  
Activity**

*Kuba Cloth Symbols*

7:30p

**FOMA Film**

*Decision to Leave*

**20 SUN**

2:00p

**FOMA Film**

*Decision to Leave*

**23 WED**

12:15p

**Art à la Carte**

*Adrian Stimson and  
Shelley Niro*

**24 THU**

**Closed**

**Holiday**

*Thanksgiving*

**25 FRI**

7:30p

**FOMA Film**

*Queen of Glory*

**26 SAT**

7:30p

**FOMA Film**

*Queen of Glory*

**27 SUN**

2:00p

**FOMA Film**

*Queen of Glory*

**30 WED**

12:15p

**Art à la Carte**

*Keith Haring - Street  
Art Boy*





**2 FRI**  
10:00a  
**Museum Shop**  
*Double Discount*  
11:00a  
**Toddler Art Exploration**  
*Exploring Rectangles*  
7:30p  
**FOMA Film**  
*A Chiara*



**MUSEUM SHOP  
DOUBLE  
DISCOUNT**

**3 SAT**  
10:00a  
**Museum Shop**  
*Double Discount*  
7:30p  
**FOMA Film**  
*A Chiara*

**7 WED**  
12:15p  
**Art à la Carte**  
*Ken Burns: The Shakers*  
6:00p  
**The Sheppy Dog Fund Lecture**  
*Leonardo da Vinci, the Last Supper, and the Art of Throwing a Great Dinner Party*



**6 TUE**  
5:00p  
**Flint Cultural Center**  
*Holiday Walk*



**9 FRI**  
7:30p  
**FOMA Film**  
*My Old School*

**10 SAT**  
7:30p  
**FOMA Film**  
*My Old School*



**11 SUN**  
2:00p  
**FOMA Film**  
*My Old School*

**13 Tues**  
10:30a  
**Coffee with a Curator**  
*Libenský and Brychtová*

**14 WED**  
12:15p  
**Art à la Carte**  
*The American Artist*

**16 FRI**  
11:00a  
**Preschool Playdates**  
*Winter Activities*  
7:30p  
**FOMA Film**  
*A Man of Integrity*

**17 SAT**  
7:30p  
**FOMA Film**  
*A Man of Integrity*



**18 SUN**  
2:00p  
**FOMA Film**  
*A Man of Integrity*

**21 WED**  
12:15p  
**Art à la Carte**  
*Quilts*

**24 SAT**  
Closed  
**Holiday**  
*Christmas Eve*

**25 SUN**  
Closed  
**Holiday**  
*Christmas Day*

**31 SAT**  
Closed  
**Holiday**  
*New Year's Eve*

THE  
CON-  
TEMPO-  
RARIES  
FLINT INSTITUTE OF ARTS

Sponsor of  
The Contemporaries



UPCOMING  
EVENTS

**February 24**  
Enjoy a tour of the Jones Collection of African American art along with learning more about collecting art.

**May 6**  
The Kentucky Derby Affair Viewing Party—enjoy the race, food, and surprises.

Join The Contemporaries

The Contemporaries is an affiliate group of the Flint Institute of Arts, geared toward young professionals. Members gain exclusive invitations to the FIA to attend special events, tours, workshops, and networking with other young professionals. Membership in The Contemporaries is \$50 for one person and \$75 for two people. You must first be an FIA member at the Student level (\$20) or higher.

For more information on The Contemporaries or to join, go to [flintarts.org/join-and-give/the-contemporaries](http://flintarts.org/join-and-give/the-contemporaries).



APPLICATION

Name (1) \_\_\_\_\_  
Birthdate \_\_\_\_\_ T-Shirt Size \_\_\_\_\_  
Phone \_\_\_\_\_ Email \_\_\_\_\_  
Name (2) \_\_\_\_\_  
Birthdate \_\_\_\_\_ T-Shirt Size \_\_\_\_\_  
Phone \_\_\_\_\_ Email \_\_\_\_\_  
Address \_\_\_\_\_  
City \_\_\_\_\_ State \_\_\_\_\_ Zip \_\_\_\_\_

☐ Current FIA member at the \$30 level or higher (see page 27 for levels).  
☐ Upgrade my membership or join the FIA at the \$20 level or higher with an additional: \$ \_\_\_\_\_

**One Person** ☐ \$50      **Two People** ☐ \$75

☐ Check payable to "Flint Institute of Arts"  
☐ VISA   ☐ MasterCard   ☐ Discover   ☐ AMEX

Acct. # \_\_\_\_\_ CVV # \_\_\_\_\_  
Exp. Date \_\_\_\_\_ Signature \_\_\_\_\_

Mail this form to: The Contemporaries, Flint Institute of Arts, 1120 E. Kearsley St., Flint, MI 48503

Hubert Phipps

Each year, the Flint Print Club commissions an artist to produce a print to augment both the FIA's collection and the pursuit of personal collecting. The Club is limited to 100 members in good standing at the Family level or above. Flint Print Club dues are \$250 annually, which provides each participating member with a selected print and related programs.

The FIA is excited to announce that Hubert Phipps has been chosen for the 2022 commissioned print. A sculptor, painter, and printmaker, Phipps began his career as an illustrator, but a visit to Willem de Kooning's studio in the 1970s opened his eyes to abstract art. Strongly influenced by Clyfford Still, and inspired by underwater realms, Phipps offers "a much-needed contemporary perspective on the endless quest to portray motion and energy in the visual arts" said Ty Cooperman, curator of the artist's recent solo



exhibition at TW Fine Art during Art Basel in Miami, Florida. He uses unconventional methods in creating his paintings and pigment drawings, often covering his eyes or drawing in complete darkness to allow his subconscious to guide the brush until the work takes on a life of its own. Phipps describes the commissioned print: "Passage East explores the ambiguity of spatial construction where negative and positive forms vacillate, making the eye perceive

Hubert Phipps  
American, born 1957  
*Passage East*, 2022  
Screenprint on paper  
22 x 30 inches



different realities." Phipps has exhibited nationwide. He is in numerous collections including the Georgia Museum of Art, the Harn Museum of Art, and Boca Raton Museum of Art. Currently, he is working on a multimedia installation for the Virginia Museum of Fine Arts as part of their renovation and expansion project. You can learn more about the artist and his work on his website at [hubertphipps.com](http://hubertphipps.com).

Yes, I want to be a member of the Flint Print Club 2022-2023 for the Hubert Phipps print.

Membership Information

Circle: Dr. Mr. Mrs. Ms. Miss

Name

Address

City State Zip

Phone Email

Methods of Payment

Check payable to "Flint Print Club" ☐ Visa ☐ MasterCard ☐ Discover ☐ AMEX

Acct. # CVV #

Exp. Date Signature

☐ I am currently an FIA member at the \$50 level or higher (see the next page for levels).

☐ I would like to upgrade my membership or join the FIA at the \$50 level or higher with an additional: \$

+ \$250.00 Flint Print Club dues

= \$

Total Payment

Membership contributions are a significant part of the FIA operating income.

Benefits and privileges of FIA membership include a 10% discount in the Museum Shop and The Palette Café; a 20% discount and early registration privileges on Art School classes; discounts on ticketed events; free admission to exhibitions; invitations to opening receptions, lectures, and special events; FIA Magazine subscription; recognition in the FIA Magazine and Annual Report and inclusion in two reciprocal membership programs for members at the \$100 level and above.

Rubens Society Members are individuals and businesses supporting FIA membership at the \$1,500 level and higher and are invited to three exclusive events each year.

Levels

Youth (2.5-12)	\$20
Student (13 to college)	\$20
Individual	\$30
Dual†	\$40
Family††	\$50
Sustainer††	\$100
Sponsor††	\$250
Donor††	\$500
Rubens Society††	\$1,500+

† 2 adults

†† 2 adults + children 18 & under

\* An asterisk indicates the names of those who have upgraded their memberships with a larger contribution.

+ A plus indicates the names of Friends of Modern Art (FOMA) members.

Δ A triangle indicates the names of Founders Society members.

Members who have joined from 6.25.22 - 9.9.22

Individual Members

Sponsor (\$250 annually)  
Dr. Sidney Martin & Ms. Pamela Martin+Δ

Sustainer (\$100 annually)  
Mr. Jason Bauer  
Mr. & Mrs. Brian Hampton  
Mr. & Mrs. Jay Schultz

Family (\$50 annually)  
Mr. Gillihan Brance  
Mr. & Mrs. Matthew Bruner  
Mr. Frank DiMercurio  
Mr. John B. Felch  
Mrs. Laura J. Kehn  
Mr. MarkTavius Nichols  
Mr. & Mrs. Ryan Niemi  
Ms. Karen Omeara  
Mr. & Mrs. Dwayne Rayner  
Ms. Julia Reynolds

Dual (\$40 annually)  
Mr. Gabriel Adams & Ms. Gwen Lechtner  
Ms. Bridget Bryson  
Mr. Todd Canty  
Ms. Nathisha Kalpage & Mr. Matthew Rapin  
Mr. & Mrs. Andre M. McGee  
Ms. Susan Murdie & Mr. Eric Johnson+  
Mr. Jeff Piontkowski  
Ms. Kathleen Ryan  
Mrs. Lidia Veloso & Mr. Brandon Smith+

Individual (\$30 annually)  
Somaia Abdulrazzak  
Miss Nicole Averyn  
Ms. Crystal Bader  
Ms. Joan Beaudoin  
Ms. Dawn Clark  
Ms. Heather Curtis+  
Ms. Margaret Cutler  
Ms. Susan Davis  
Ms. Valerie DeHaven  
Mrs. Beverly Dunlap  
Ms. Regina Dunn  
Ms. Erin Evelyn  
Mrs. Vonda Everly  
Ms. Joanne Gensel  
Mrs. Rebecca Glatfelter  
Mr. Ardell Hargrave, Jr.+  
Dr. Brenda Harrison  
Ms. Lori Hausbeck  
Ms. Kay Iddins+  
Mr. James Johnson  
Ms. Kimberly Mathiot  
Ms. Madeline Mulkey  
Mr. Daniel Mundy  
Ms. Elizabeth Orłowski  
Riley Radell  
Ms. Theresa Rathwell  
Ms. Kristie Risner  
Ms. Vicki Schneider



Ms. Jessica Selkirk  
Mrs. Janice B. Smolin  
Mr. Ted Trower  
Ms. Gwendolyn Truesdell  
Ms. Jenny Turner  
Mrs. Judith L. Wienckowski  
Mr. Larry Woodby+

Ms. Mo Yang  
**Student**  
(\$20 annually)  
Ms. Elizabeth Johnson  
Ms. Karen Kowalko

Members who have renewed from 6.25.22 - 9.9.22

Rubens Society

**Business**  
(\$1,500 & above annually)  
Christie's - Chicago  
Christie's - New York

**Individual**  
(\$1,500 & above annually)  
Mr. Glen Adams & Ms. Maria Gonzalez+Δ  
Ms. Sandra Applegate  
Dr. Stephen R. Burton+Δ  
Mr. Dallas Dort & Mrs. Sharon A. Peterson Dort  
Dr. Brenda Fortunate & Mr. Edward White+Δ  
Mr. & Mrs. John B. Henry\*  
Mr. William J. Hentgen+Δ  
Mr. & Mrs. Raymond J. Kelly III  
Mr. H. Michael Parker+Δ  
Mr. & Mrs. Khalil M. Saab+Δ  
Mrs. Phyllis L. Schroeder  
Mr. & Mrs. Howard S. Shand  
Mr. & Mrs. James Spangler

Business Members

**Business Donor**  
(\$500 annually)  
League of Interesting Women\*+Δ

**Business Supporter**  
(\$250 annually)  
Boyd Investment Services+Δ

**Business Sustainer**  
(\$100 annually)  
RE/MAX EDGE+Δ

Individual Members

**Donor**  
(\$500 annually)  
Hon. Judith A. Fullerton & Mr. Ward Chapman

**Sponsor**  
(\$250 annually)  
Mr. David B. Coleman  
Ms. Dorothy Gae Davis  
Miss Kara Ebbott  
Mr. Bruce Focht  
Ms. Patricia Gage & Mr. William McKay+Δ  
Ms. Judith I. Ingram\*+Δ

Mr. & Mrs. Andrew Isola+Δ  
Mr. & Mrs. John H. Lang  
Ms. Dorothy Latchana  
Mr. & Mrs. Raymond Lee+Δ  
Ms. Kathy Liggett\*  
Mr. & Mrs. Bert Ruden  
Mr. & Mrs. David H. Smith\*Δ  
Ms. Ann Marie VanDuyne+Δ  
Carlene & Rob VanVoorhies+Δ

**Sustainer**  
(\$100 annually)  
Ms. Denise Ahonen  
Steven & Valarie Bailie  
Mr. & Mrs. Michael Barker  
Mr. & Mrs. Donald L. Becker+Δ  
Mr. William L. Bennetts+  
Mrs. Paula S. Bottinelli & Ms. Lia O'Toole  
Mr. & Mrs. Mick Bowers+  
Mr. & Mrs. Robert L. Brown II+Δ  
Mrs. Cathy Brown  
Rev. & Mrs. Kendall H. Brown  
Dr. Denis Callewaert & Ms. Karen Callewaert  
Dr. Donna Case  
Robin & Kathleen Childress  
Mr. & Mrs. James Clodfelter, Jr.  
Mr. & Mrs. Paul Corliss+  
Ms. Carol Dickinson & Mr. Alvin Miller  
Mr. James & Dr. Carol Dowsett  
Mr. Ryan M. Eashoo & Mr. David Eashoo\*+Δ  
Ms. Loretta C. Ellwood+  
Mr. Gregory D. Fiedler+Δ  
Dr. & Mrs. Melvin Flamenbaum+Δ  
Mr. & Mrs. Richard Foor+Δ  
Mr. & Mrs. Michael B. Foote\*  
Ms. Joyce M. Gadola  
Mr. & Mrs. Gary Gebhardt  
Mr. & Mrs. Lawrence C. Goldman  
Ms. Andrea Greensky  
Ms. Lynn A. Hampton  
Mr. & Mrs. Joel H. Harris+Δ  
Mr. & Mrs. Ronald J. HartmanΔ  
Ms. Theresa Haynes\*+  
Mrs. Judith Henley  
Mrs. Ermie Hermann  
Mr. & Mrs. Timothy A. Hohn  
Mr. & Mrs. David Hollenbeck  
Mr. & Mrs. Robert Hughes  
Dr. Susumu Inoue  
Ms. Susan A. Ives  
Mr. & Mrs. G. Donald Kaye+Δ  
Ms. Kathryn Kohout & Dr. Laurie Kohout+Δ  
Ms. Donna Kraft  
Mrs. Aileen Kushner  
Ms. Sandra Kusza  
Drs. Scott & Lisa Langenburg  
Mr. & Mrs. Brian Larkin\*  
Ms. Susanne J. Les & Mr. Tim Green  
Mr. & Mrs. Rod Little\*  
Mr. John Loeding  
Mr. & Mrs. Clifford Lutz  
Mr. & Mrs. Lee Maxwell+  
Dr. Della McGaugh & Mr. Jack McGaugh  
Dr. & Mrs. Kim P. McPheetersΔ  
Ms. Kareyna Miller+Δ  
Mr. & Mrs. David C. Miller\*

Ms. Christy Moore+  
Mr. Walter Nagel+Δ  
Ms. Diane M. O'KeefeΔ  
Mr. & Mrs. Randall Petrides  
Mr. & Mrs. Douglas Petroni & Ms. Rosalie Buss-Petroni+  
Mr. Gary Philpott+Δ  
Mrs. Janice G. Pike  
Dr. & Mrs. W. Archibald Piper  
Mr. Morton Potter, Jr.+Δ  
Mr. & Mrs. James Powell  
Mr. & Mrs. Marc Resteiner  
Mr. & Mrs. Bruce Richardson  
Dr. Christine Rohr\*  
Dr. Randle Samuels & Ms. Gail Offen+Δ  
Mr. & Mrs. Mark A. Schwartz+Δ  
Mr. & Mrs. Brandon Scott  
Ms. Jo Shouse & Ms. Pat Hancock  
Mr. & Mrs. Thomas M. Shubert  
Mr. & Mrs. Thomas Skunda  
Dr. Reginald Smith  
Ms. Sandra K. Smith+  
Ms. Sheila R. Smith +Δ  
Mrs. Barbara Sorscher  
Mr. & Mrs. Alan Steffe\*  
Ms. Sheryl Stephens & Mr. Dan Roesner  
Mr. Andrew Stout & Mrs. Stevie Cooper  
Ms. Suzanne Sugden+Δ  
Ms. Roberta Sweetman+  
Mr. Gene Taylor  
Mr. & Mrs. Michael J. Thorp\*+Δ  
Ruth & Joseph Thrash  
Mr. Nathan Upfal & Ms. Rosalind Zukowski+  
Mrs. Suzanne P. Webb+  
Ms. Joyce M. Wefel\*  
Mr. & Mrs. Richard C. Weiermiller  
Dr. Charles V. White+Δ  
Mr. & Mrs. Chris Wise\*  
Judge & Mrs. Thomas C. Yeotis+Δ  
Ms. Catherine Yeotis+  
Mr. & Mrs. Art G. Yeotis\*+Δ  
Ms. Lindsey Younger+Δ  
Ms. Jane Zelnis

**Family**  
(\$50 annually)  
Mr. & Mrs. Robert Alexander  
Mr. Fred Allen & Dr. Denise Smith Allen  
Mr. & Mrs. Edward P. Arends  
Ms. Karen E. Bailey & Mr. Kyle Bailey  
Mr. & Mrs. John Battles  
Mrs. Patricia Beauvais & Mr. Allan Wells  
David & Natalie Bontumasi  
Mr. & Mrs. Colon Brown\*  
Ms. Rita Bullard  
Dr. & Mrs. Marshall Cossman  
Ms. Denise Davidek & Mr. Brian Liljebblad\*  
Mr. & Mrs. Glen De Vos  
Ms. Mary S. Felix  
Mr. & Mrs. William Flanigan  
Ms. Pam Folts & Ms. Sherry Johnston  
Mrs. Carolyn Goetz  
Mr. & Mrs. Brian Kaul

Mr. & Mrs. Patrick Keavy\*  
Mr. A.P. Kennedy  
Ms. Lisa M. Land  
Mr. Matthew MacDougall  
Mr. & Mrs. James Mikulski  
Mr. Rafael Mojica & Mrs. Yolanda Mojica  
Mrs. Tonya Moore-Bouchard\*+Δ  
Mr. & Mrs. Rick Murphy  
Mrs. Jeanette Neu  
Mr. & Mrs. Ed O'Mara\*  
Ms. Judith Perez  
Ms. Judy Rucker  
Mrs. Mary-Lou Rynski\*  
Mr. & Mrs. Robert Thielen\*  
Mr. Joseph Vainner\*  
Mr. Ben Vernia\*  
Ms. Robin Wagner  
Mr. & Mrs. Daniel Waldron  
Mr. & Mrs. Zach Warby  
Mr. & Mrs. Gregory Weaver  
Ms. Susan M. Wedda & Ms. Carol J. Ferguson+  
Mr. & Mrs. Arthur Weiss  
Mr. & Mrs. John Wilson+  
Mr. & Mrs. Joseph Wolf  
Ms. Doris M. Wright  
Mr. Alfred Mirakovits & Ms. Cynthia Zack\*  
Mr. & Mrs. Paul A. Zimmermann

**Dual**  
(\$40 annually)  
Dr. Judy Ableser & Rabbi Jeffrey Ableser\*  
Mr. David Barber & Mr. Paul Wizinajts+Δ  
Ms. Dawn M. Bentley  
Mr. & Mrs. James Bleicher  
Mr. & Mrs. Brian Boch  
Ms. Diane Brady & Mr. Steve Schwab  
Mr. Stephen Brown & Mrs. Lisa Sabo Brown  
Mr. & Mrs. Richard J. Caloia  
Ms. Cindy Carney & Mr. Gerald Kanous+Δ  
Mr. Ernest C. Carter\*  
Mr. James R. Chintyan+Δ  
Mr. & Mrs. Patrick Dobson  
Mr. & Mrs. James Drolet  
Mr. & Mrs. Paul Easter  
Ms. Erin Elliott\*  
Mr. & Mrs. James P. Ford  
Mr. & Mrs. James Gaver+  
Mr. & Mrs. John Gembinski  
Mr. & Mrs. Steven Glass  
Mr. Peter Hafner  
Mr. Brian Howell & Ms. Kathleen Nordrum  
Bridget & George Hughes+Δ  
Mr. & Mrs. Steven A. Jadwin+  
Mr. Richard G. Johnson\*  
Mr. & Mrs. Jay Kalisky  
Mr. & Mrs. Thomas Kudza  
Mr. & Mrs. Mike Laux+  
Ms. Marcia Luther\*  
Mr. & Mrs. Brian Martin  
Mr. & Mrs. James McDougall  
Mr. & Mrs. Charles Monastra  
Mr. & Mrs. Allan Moore  
Njeru Muraguri\*  
Mr. Robert Oaks & Ms. Mara Markowitz

Dr. Nathaniel Ostrom & Dr. Peggy Ostrom  
Mr. & Mrs. Richard Pasiak+Δ  
Ms. Debra Piper+  
Mr. John Powell  
Mr. Thomas Pugsley & Ms. Susan Sage  
Atty. Tricia Raymond & Mr. Richard Ponsetto  
Mr. & Ms. Robert Rhodes  
Ms. Cheryl A. Rogers & Mr. David Rogers  
Mr. William Salo & Mr. Douglas Salo  
Ms. Sarah Scheitler & Mr. Jacques Doucet  
Ms. Marta Schonfeld  
Dr. Richard & Rose Marie Shick  
Mr. & Mrs. Rohn Smith  
Mr. & Mrs. Worley Smith+Δ  
Mr. David Sutton\*  
Mr. & Mrs. Victor Todorow  
Mr. & Mrs. James Uicker  
Mr. & Mrs. James Waner+

**Individual**  
(\$30 annually)  
Mr. William V. Abendschein+  
Ms. Janet Allison  
Mrs. Catherine D. Amboy  
Mrs. Leesha Aseltine  
Mrs. Mary Ittigson Baehr  
Dr. Richard P. Baks  
Mrs. Jan Barlow  
Ms. Sandra Baylis  
Ms. Linda Bedtelyon  
Ms. Janelle Beren  
Ms. Shirley I. Blair  
Mr. Steven Breshgold  
Mrs. Sharon Brock  
Mrs. Rebecca Brown  
Ms. Martha Calhoun+  
Ms. Karla Christenson  
Ms. Alison Clemens  
Mrs. Paula Crossnoe  
Dr. Ronald Crow  
Ms. Holly Curtis  
Ercis Urisaeam Migrateaem Uiriesausa Den glücksburgske slægt  
Dr. Deb Doherty  
Ms. Shirley Dunbar-Pumphrey+Δ  
Ms. Michelle J. Dvorak  
Ms. Catherine El-Mandouh  
Ms. Barbara A. Elford  
Ms. Cynthia Ernst  
Ms. Sarah Eubanks  
Ms. Christine Gardner  
Ms. Judith Generous  
Ms. Lynn Gibbs  
Mrs. Debi Goulet+Δ  
Mr. Alan D. Hackett  
Ms. Anne Hagiwara  
Ms. Dora Hoelscher  
Ms. Judy Hood  
Mr. Gerald House  
Mr. Larry D. Howell  
Mrs. Elaine Johnson  
Ms. Kaye B. Kaufherr  
Mr. Stephen Kober  
Ms. Marie Lauer  
Ms. Kerstin Lawrence  
Mrs. MaryBeth Leet  
Ms. Marianne Lewandowski

Ms. Mary Margaret  
Ms. Gina Mattarella  
Ms. Rosellen McAlearΔ  
Ms. Susan McCormack  
Mr. Peter McFray  
Mrs. Mary McNally  
Mrs. Barbara Menear Nickola  
Ms. Nancy Meszaros  
Ms. Sky Mikinak  
Mr. Robert Mooney  
Mrs. Loretta Neville  
Ms. Betty Noonan  
Eyo-Doris Nsien  
Ms. Jolene Padgett  
Dr. Charles E. Parker II+Δ  
Ms. Roberta Parkhill  
Mrs. Margaret Patterson  
Ms. Jacqueline Piechowski+Δ  
Ms. Sally Pierson+  
Ms. Brenda J. Price  
Ms. Frances J. Price  
Mrs. Elizabeth Rix  
Ms. Edith A. Robbins+  
Ms. Kathleen RollinsΔ  
Dr. Wilma Romatz  
Ms. Mia Ryan  
Ms. Deirdre Ryan  
Ms. Ramona Sain  
Ms. Diane Sanglier+  
Mrs. Linda Scharrer  
Mrs. Arlene A. Schmitzer  
Dr. Barbara Sears  
Mrs. Marilyn Secatch  
Ms. Verna Shook-Dunn  
Ms. Doris Siegmann  
Ms. Pauline Southworth  
Miss Melody Sowers  
Mrs. Emma Lou St. Onge  
Mr. Mark Q. Thornton+Δ  
Ms. Mady Tissenbaum  
Mrs. Lei Tobias+  
Miss Alysia Trevino\*  
Ms. Elizabeth Uptegraff  
Ms. Rita Valley+  
Ms. Lorrie Vandivier  
Mr. Daniel Vernia  
Mrs. Sue Vernia  
Mrs. Renee Wagner  
Ms. Wanda R. Warby+  
Mr. Sheldon Weiner  
Mrs. Shirley Wells  
Mrs. Michelle Wilkerson  
Mr. Edward Williams  
Ms. Ruth Young

**Youth**  
(\$20 annually)  
Justin Williams  
Trey Williams

YOUTH MEMBERSHIP

The FIA's Youth Membership is a fun way for children ages 2.5-12 to learn about art and create their own. This year's theme focuses on the Kuba Cloth Skirt located in the Art of Africa Gallery. Beginning in the fall, members will participate in three art activities. Annual membership dues are \$20 for the first child and \$10 for each additional child.

Youth Activity

November 19  
1:30p-4:00p • Studio 10

Kuba Cloth Symbols

After viewing the Kuba Cloth Skirt in the Art of Africa Gallery, Youth Members will return to the studio to draw shapes reflecting the Kuba cloth symbols and then paint washes of color with watercolor paints. Using black and white pens, students will enhance their drawings, creating patterns and lines that emphasize the geometric shapes in the weaving.

Parents and guardians are encouraged to enjoy the FIA galleries, Palette Café, and Museum Shop while the children work on their projects.

This activity is free to youth members. Call 810.237.7315 to RSVP your child today.

Youth membership sponsored by  
Halo BURGER



Democratic Republic of Congo  
Africa  
Kuba Cloth Skirt,  
20th century  
Raffia palm fiber  
and dye  
182 × 28 inches  
Museum purchase,  
2006.122

The Flint Institute of Arts gratefully acknowledges the generosity of the following donors who have supported the Institute with contributions.

**Gifts received from 7.1.22 – 9.9.22**

**The Contemporaries Since 7.1.22 – 9.9.22**

Mr. James & Dr. Carol Dowsett  
Mr. Ryan M. Eashoo  
Dr. Brenda Fortunate & Mr. Edward White  
Mr. Peter McFray  
RE/MAX EDGE - Becky McCarron  
Mr. Sang Truong  
Mr. Nathan Upfal & Ms. Rosalind Zukowski

**Exhibitions Endowment Campaign**

Anonymous  
Charles Stewart Harding Foundation, in honor of Claire M. White  
Mr. & Mrs. Carl Hansen  
Mr. & Mrs. Jimmy King  
Ms. Kerstin Lawrence

**Film Society Sponsors 2022-23**

*Screenwriter - \$2,500*  
Merrill a Bank of America Co.

*Supporting Player - \$500*  
Mr. Carroll G. Baker & Ms. Kimberly Roberson  
Ms. Linda L. Pylypiw  
Ms. Ja-neen Wooten

*In-kind Media Sponsor*  
Michigan Radio

**Film Society Members 2022/23**

*Since 7.1.22 – 9.9.22*

Ms. Helen Bas  
Ms. Mary K. Bickley  
Ms. Nora G. Fisher  
Dr. Brenda Fortunate & Mr. Edward White  
Ms. Virginia Gaffney  
Mr. & Mrs. Roger Gilmour  
Jonathan & Tracee Glab  
Mr. John Hemingway & Mrs. Connie Palmer  
Mr. John Hubbard  
Mrs. Linda LeMieux  
Sean & Eureka McCormick  
Mr. Michael Orr & Ms. Darla Orr  
Ms. Rodica Phillips  
Mr. & Mrs. Roy Sabo  
Ms. Sandra K. Smith  
Ms. Elizabeth Svoboda  
Ms. Jolyn Vita  
Mr. & Mrs. James Waner

**Special Gifts**

**To support General Operating**  
Benevity Community Impact Fund

**Purchased a Gift of an FIA Membership**  
Charles Dunlap for Mrs. Beverly Dunlap  
Ms. Pam Folts & Ms. Sherry Johnston for Lisa Land  
Ms. Kay Iddins for Larry Woodby  
Ms. Kerstin Lawrence for Martha Calhoun  
Mr. Daniel Vernia for Sue Vernia & Ben Vernia

**Grant to allow for research on the painting "The Fowler Children"**  
Flint Community Fund of the Community Foundation of Greater Flint advised by William H. Piper, on his behalf and on behalf of his children, Karen & Allen Aho, Bill & Freida Piper, and granddaughter, Alexandra Piper, who wish to express their gratitude to Tracee Glab, Sarah Kohn, and Kathryn Sharbaugh

**To support the FIA Glass Program**  
Frederick & Barbara Bellairs

**Matching Gift to support Educational Programs**  
Charles Stewart Mott Foundation

**To support The Palette Café**  
Mr. James R. Chintyan

**To support Collections Fund**  
E. Rhodes and Leona B. Carpenter Foundation

**To support Exhibitions Fund**  
Mr. & Mrs. William Flanigan

**To support the Professional Development Portfolio for students living in the City of Flint attending Flint Community Schools**  
Donor-advised fund grant by Dr. Gail Ganakas through the Dr. Gail Ganakas Fund of the Community Foundation of Greater Flint

**To support the Art School**  
Ms. Anne Hagiwara  
Dr. Randle Samuels & Ms. Gail Offen

**To support the Art School Scholarship Fund**  
Mr. & Mrs. Patrick Warner

**Sponsor of Coffee with the Curator 2022**  
Biggby Coffee

**Sponsor of Youth Membership Programs**  
Halo Burger

**Support of Hot Shop Demonstration Days 2022**  
McLaren Health Care

**Support of FIA Magazine 22/23**  
Ms. Lynne Hurand

**Support of Huntington Free Saturdays 21/22**  
Huntington Bank

**In Memory**

**In memory of Barbara Maro Fayroian-Roth to support General Operating**  
Mr. & Mrs. Roger Roth

**In memory of Anne Marie Heidel to support Exhibitions Endowment**  
Mr. Tom Heidel & Mr. Jonathan Taylor  
Laura Stahlberg & Treva Swersky

**In memory of Albert J. Koegel to support Exhibitions Endowment**  
Chuck & Kathryn Sharbaugh

**In memory of Randolph Piper to support Acquisitions Fund**  
Anonymous

**In memory of Edward J. Preville to support Acquisitions Fund**  
Mr. & Mrs. Roy Beville  
Mr. Richard H. Peterson  
Ms. Cherie Preville  
Mrs. Sandra Preville  
Mr. & Mrs. James Salem  
Kathryn Sharbaugh

**In memory of Marshall (Bubba) H. Sanders III**  
Ms. Elaine Parker & Mr. Ray Parker  
Mr. & Mrs. Erik Warren

**Print Club Members 2020/21 Since 7.1.22 – 9.9.22**

Mr. Jason Bauer  
Ms. Ayanna Davis & Ms. Erika Davis

**The FIA Film Society Legacy Fund**

A decade ago, the FIA established the Film Society. Membership in the society not only supports the Film Program, it offers its members reduced film ticket prices, pre-screenings, as well as recognition of support.

Recently, one of the founding members of the Society, Flint filmophile Linda Pylypiw, notified the FIA that she was establishing a planned gift from her estate to benefit the program. This discussion has led to the formation of the FIA Film Society Legacy Fund (FSLF). This endowment will help sustain the Film Program in perpetuity. Linda is giving a lead gift to start the fund and, in the future, when her bequest is realized, it will be added to the FSLF.

If you are a member of the Film Society or just love films and want to help ensure that the film program continues, please consider a contribution to the Film Society Legacy Fund. As the FSLF grows, it will yield dollars to sustain the affiliated costs of equipment and theater maintenance, personnel, security, and ensure that the FIA will always be the place to see great classics, foreign, alternative and independent films. Your contribution is 100% tax deductible and will help to preserve the program well into the future.

**Yes, I want to donate to the Film Society Legacy Fund.**

**Contact Information**

Circle: Dr. Mr. Mrs. Ms. Miss

Name

Address

City State Zip

Phone

Email

**My Donation**

**Total Amount Enclosed \$** \_\_\_\_\_

Payment plans are available by contacting Valarie Bailie at vbailie@flintarts.org or 810.234.1695.

**Methods of Payment**

☐ Check payable to Flint Institute of Arts

☐ Visa ☐ MasterCard ☐ Discover ☐ AMEX

Acct. # CV#

Exp. Date Signature





Gift of a Seat

You too can present a lasting gift this season to a family member or special friend through a sponsorship of a seat in the FIA Theater. Create your own engraved inscription on a brass plaque permanently attached to the seat of your choice. Seat sponsorship donations assist in building the FIA's endowment and your donation is 100% tax deductible.

Please send in this form completed with your designation.



Alexander Murray surprised his wife Sylvia with a creative gift on her birthday, a seat in the FIA Theater! For the past three decades, Alex and Sylvia have joined friends in watching films, listening to lectures and attending events in the Theater. It is always something they look forward to doing together.

Take-A-Seat Form

Payment Options

Seat - \$1,000

☐ A one-time payment

☐ A pledge of \$500 per year for two years

☐ Instead of sponsoring a seat, I would like to make a gift to the Endowment Fund of \$

Brass Plaque Inscription

Please clearly print the text as you would like it to appear on your brass plaque. It can be your name, a family name, a business name or a tribute to another person (three lines maximum, one character per box, blank spaces count as one character).

Method of Payment

Name

Address

City State Zip

☐ Check payable to "FIA Endowment Fund"

☐ VISA ☐ MasterCard ☐ Discover ☐ AMEX

Acct. # CVV #

Exp. Date Signature

Return form to:

For more information:

Gift Certificates

Stumped for a quick and useful gift? Treat someone to a Palette gift certificate. We are open seven days a week and boast tasty goodies that every foodie can enjoy. Stop by to pick one up today!

Pressed for time? Order ahead at 810.249.0593.

FIA members receive 10% off.

Hours: Mon-Wed & Fri-Sat, 10a-5p\*; Thu, 10a-8p\*; Sun, 1p-5p

\* The Palette Café is open extended hours for select special events.

PALETTE Café

distinctive gifts

Surprise them... with a distinctive gift that is sure to stand out this holiday season. Offering a wide range of artisan jewelry and accessories, hand blown glass, creative children's crafts and toys, books, journals, and cards, we have something unusual and unexpected for everyone. We also offer gift cards for those who are impossible to buy for!

FIA members receive 20% OFF online and in-store Dec 2-4

DOUBLE DISCOUNT December 2-4

FIA MUSEUM SHOP

Members always receive a 10% discount on Museum Shop purchases.

Museum Shop Hours

Mon-Wed & Fri-Sat, 10a-5p\*; Thu, 10a-8p; Sun, 1p-5p

\*The Museum Shop is open extended hours for select special events.





1120 E. Kearsley St. Flint, MI 48503

**Founders Society & the Flint Institute of Arts**  
*are pleased to present*

# FIRST Arts & Fine FROST Crafts Fair

*Located at the*  
**Flint Cultural Center Academy**  
1200 Robert T. Longway Blvd., Flint

## **Shop the Artists**

Featuring new and returning selected artists displaying handmade items created from fiber, wood, metal, clay, glass, mixed media and more. Get your holiday shopping done early!

**November 5**

Saturday • 10a–5p

**November 6**

Sunday • 11a–4p

## **Festival of Trees**

Find your handmade, one-of-a-kind tree created by local designers and florists. Also, win great art created by First Frost artists from the Silent Auction and stock up on delicious homemade baked goods, and more!

General Admission - \$5  
Children 12 & under - Free

