

# FIA

magazine

MAY-AUG 2022



# CONTENTS

executive director	1	presentations	26
exhibitions	2-8	lectures	27-28
art on loan	9	events	29-32
acquisitions	10-13	calendar	33-36
films	14-18	membership	37-41
art school	19-22	contributions	42-44
education	23-25	museum shop	45

## Office Hours

Mon-Fri, 9a-5p

## Gallery Hours

Mon- Sat, 10a-5p; Sun, 1p-5p

Closed on major holidays

## FIA Theater Hours

Fri & Sat, 7:30p; Sun, 2p

## Museum Shop & Art School Gallery

810.234.1695

Mon-Sat, 10a-5p; Sun, 1p-5p

## The Palette Café

810.249.0593

Mon-Fri, 9a-5p; Sat, 10a-5p;

Sun, 1p-5p

The Museum Shop, Art School Gallery, and The Palette Café are open late for select special events.

## Admission

Adults \$10.00\*

12 & under FREE

Students w/ ID \$8.00\*

Senior citizens 62+, \$8.00\*

active military, & veteran



FREE SATURDAYS

\* Free to FIA members and Genesee County residents

## Website

flintarts.org

## Address

1120 E. Kearsley St.  
Flint, MI 48503

## Telephone

810.234.1695

## Fax

810.234.1692

The FIA is a non-profit, equal opportunity employer, and provides programs and services without regard to race, color, religion, national origin, age, gender identity, or disability.

Operating support for the FIA is provided in part by the Charles Stewart Mott Foundation.



FIA Exhibitions and Programs are made possible in part with the support of the Michigan Council for Arts and Cultural Affairs, a partner agency of the National Endowment for the Arts.



FIA operations are funded in part by the Genesee County Arts Education and Cultural Enrichment Millage funds. Your tax dollars at work.



This magazine, made possible through a generous donation by Lynne Hurand, is published five times per year for mailing to FIA members, museums, and libraries around the country.

## Board of Trustees

Thomas B. Lillie, *President*  
Mark L. Lippincott, *First Vice-President*  
Dean T. Yeotis, *Second Vice-President*  
Elisabeth Saab, *Secretary*  
Martha Sanford, *Treasurer*  
Elizabeth S. Murphy, *Immediate Past President*  
Kathryn C. Boles  
John Bracey  
Eleanor E. Brownell  
Ann K. Chan  
James D. Draper, *Founders Society President*  
Mona Hardas  
Carol Hurand  
Lynne Hurand  
Dale Keipert  
Raymond J. Kelly III  
Alan Klein, *Trustee Emeritus*  
Eureka McCormick  
Matthew L. Norwood  
Karl A. Olmsted  
Dr. Brenda Rogers-Grays  
Mary Coe Ryan  
Sharon A. Simeon  
Theresa A. Stephens-Lock  
Tiffany Stolzenfeld  
Lynne A. Taft-Draper, *Friends of Modern Art President*  
David T. Taylor  
Anton Thornquist  
Gregory G. Viener  
Dale K. Weighill  
Jay Werschky  
Shannon Easter White

## Administration

John B. Henry, *Executive Director*  
Michael A. Melenbrink, *Director of Finance & Administration*  
Marissa Pierce, *Director of Development*  
Tracee J. Glab, *Curator of Collections & Exhibitions*  
Monique M. Desormeau, *Curator of Education*  
Donovan Entrekin, *Director of the Art School*  
Sarah Mullane, *Director of Member & Guest Relations*



cover image from the exhibition (pages 2 & 3)

## Genesis Tramaine

American, born 1983  
*Mother. Saint. Rebekah* (detail), 2020  
Painting  
72 x 72 inches  
Courtesy of Rubell Museum

# From the Executive Director

## A Legacy Built to Grow, Evolve, and Expand

As my retirement date nears June 30, I can't help thinking about all the wonderful things that lie ahead for the Flint Institute of Arts. With our experienced and highly professional staff, enthusiastic volunteers, and a community whose support has never been higher, the FIA is well positioned for the future. There is so much to look forward to, and many things are already in the works.

The FIA's art collection has never been stronger, with now more than 9,500 objects and counting, from around the world, ancient to contemporary in a wide variety of mediums. Yet, there is room to grow, refine, and diversify the collection, which will surely lead to fresh gallery installations and engagement with the community. Recently, two large collections, one of contemporary craft and the other of ancient American art, have been pledged and are already on their way. Who knows what other great works of art are destined for the FIA's galleries in the future? Planning, scheduling, and a little dreaming are also underway on several extraordinary exhibitions scheduled through 2025 and beyond. As always, our ongoing research will pave the way for publications and presentations on new discoveries and revelations about art and the impact museums can have on their communities.

Though the Art School is experiencing record high enrollment, there is still capacity to expand. The school has tremendous momentum moving forward with well-equipped studios, excellent teachers, and engaged, loyal students. The Art School has a strong foundation on which to build and grow beyond a local community resource into a nationally known destination for education in art making. Particular areas of growth include expanded capacity in the Portfolio Development Program for high school students, increased reach and diversity in the visiting artist program, and growing partnerships with local resources, such as the



University of Michigan-Flint and the Factory Two Makerspace.

Education is a hallmark of the FIA's programs and events. We consider learning that provides dynamic and enriching experiences to stimulate the imagination, thought, and creativity for people of all ages to be a lifelong process. Moving forward, it will be interesting to see the results of our efforts to expand family literacy programs, provide resources for people with sensory issues, improve K-12 school initiatives, and develop lifelong learning opportunities for individuals and groups, from infants to seniors. The FIA's programs are well positioned to become a model for other communities across the country who face these same issues.

The FIA has always been a place that inspires wonder and awe, and a new perspective will keep things fresh and exciting. I have full confidence that my replacement will arrive with the vision and vitality needed to take the FIA forward. And with so many opportunities to attract and engage current and new audiences, the future looks as exciting as ever.

## John B. Henry

Executive Director



# Being Human

## Contemporary Art from the Rubell Museum

5.14.22 – 8.28.22

Hodge and Henry Galleries

This exhibition explores the diverse world of contemporary art through the lens of the Rubell Museum's collection. Art of the late 20th and early 21st centuries generally defy categorization and the "-isms" common in previous stylistic movements. However, the works selected from the Rubell Collection for this exhibition share the common theme of depicting the complexity of experiences that make us human. Through painting, sculpture, and photography, these artworks ignite emotional responses to various issues, including gender, race, sexuality, embodiment, identity, love, life, and death. By contemplating the past, present, and future, artists interpret their own and others' existence through a thought-provoking visual vocabulary that transcends the limits of language. Not meant to be an exhaustive or universal picture of contemporary art, *Being Human* highlights some of the best works by artists from the Rubell Museum collection, located in Miami, Florida, many of which will be seen at the FIA for the first time. Nor is this exhibition meant to fully capture what it means to be human, but rather to show some of the ways artists have dealt with complex realities, pointing out willful or inadvertent blindness to what's all around us. In an era of doubt, confusion, and disconnect, this exhibition presents unique perspectives, not necessarily providing answers, but offering the many ways art provokes contemplation, understanding, compassion, and introspection.

The Rubell Family Collection was established in 1964 in New York City, shortly after its founders Donald and Mera Rubell were married. It is now one of the world's largest, privately owned contemporary art collections. In addition to displaying internationally established artists, they also actively acquire, exhibit, and champion emerging artists working at the forefront of contemporary art.



George Condo

Organized by the Flint Institute of Arts and the Rubell Museum.

Exhibition Sponsor



**George Condo**  
American, born 1957  
*Big Reclining Nude*, 1988  
Oil, charcoal, and paper on canvas  
98½ x 118 inches  
Courtesy of Rubell Museum

**Jean-Michel Basquiat**  
American, 1960-1988  
*Untitled (Self-portrait)*, 1982-1983  
Oil on wood  
20 x 20 inches  
Courtesy of Rubell Museum

**Richard Prince**  
American, born 1949  
*New England Nurse*, 2002  
Inkjet and acrylic on canvas  
79¾ x 52¼ inches  
Courtesy of Rubell Museum



Jean-Michel Basquiat



Richard Prince

## Members Preview

5.13.22

### Lecture

6:00p  
FIA Theater

**Juan Valadez**

*Director of the Rubell Museum*



Juan Valadez will give an overview of the exhibition featuring contemporary works of art from the Rubell Museum.

Originally from Brazil, Valadez earned a Bachelor of Fine Arts from Cooper Union in New York City. Valadez has worked with the Rubell family since 2000 and has held the position of director of the museum and their Contemporary Arts Foundation in Miami, Florida, since 2009.



# Walk on the Wild Side Animals and Other Creatures

8.6.22 – 2.5.23

Ann K. Walch-Chan Gallery



Maya culture

Animals, both real and mythological, have occupied an important place in art from prehistoric to modern times, often carrying a rich variety of symbolic associations. These creatures have served as vehicles for allegory, moral instruction, and have stood as symbols for power and social status. The human relationship with other species is complex and ever-changing with images of animals in art continuing to entertain and inspire us.

From functional to decorative, the artworks in *Walk on the Wild Side* feature various animal groups from amphibians and reptiles to mammals and the fantastical hybrid creatures. The exhibition, drawn from the FIA's permanent collection, explores animals and their place in culture through three-dimensional works of various time periods and media including stone, clay, and glass.



Baccarat



Chinese

Maya culture  
Guatemalan  
*Cocoa Jar with Monkeys*,  
ca. 800-1200 CE  
Clay  
20 x 10 inches  
Gift of Robert Drapkin,  
2008.267

Baccarat  
French, founded 1764  
*Snake on Rocky Ground*,  
ca. 1850  
Glass  
2 7/8 inches diameter  
Museum purchase with  
funds from the Jill Ford  
Murray Irrevocable Trust  
in memory of her parents,  
Carlotta Espy Ford and  
George Ross Ford, Jr., and  
her grandparents, Grace  
Miller Ford and George  
Ross Ford, 2013.20

Chinese  
*Small Camel*, 618-906 CE,  
Tang Dynasty  
Ceramic  
11 x 9 x 5 inches  
Gift of Gerald Shepps in  
memory of Roslyn Shepps,  
2009.3

Rembrandt Harmenszoon  
van Rijn  
Dutch, 1606-1669  
*The Rat Catcher*, 1632  
Etching on paper  
5 1/2 x 4 15/16 inches  
Gift of The Whiting  
Foundation through  
Mr. and Mrs. Donald E.  
Johnson, 1970.15

# Out of the Past Printmaking 15th to 18th Century

through 6.12.22

Graphics Gallery

This exhibition highlights works from the intensely creative period of the 15th to the 18th century, featuring works by Old Masters, including Dürer, Goltzius, Rembrandt, Piranesi, and Hogarth. Prior to the invention of photography in the mid-19th century, images were made by artists on paper with ink applied to surfaces of cut wooden blocks or etched metal plates. This period also saw the unlimited potential of the print medium to spread depictions of people, places, and events across Europe and the New World. Cheaper to make and more portable, prints provided a way for artists to produce the same image multiple times enabling them to share their work with a wider audience than a single painting possibly could.

*Out of the Past* includes a range of early prints, from relief to intaglio, assembled to demonstrate the variety of techniques and diversity of subject matter, from landscapes and portraits to religious and mythological scenes. Some prints were meant to accompany text in a book, others to reproduce famous paintings.

All exemplify the masterful skill and attention to detail required to create a printed image with its own characteristic appeal.





# Restrained/ Unrestrained

through 7.17.22

Ann K. Walch-Chan Decorative Arts Gallery

As objects made to enclose and hold materials for storage or transportation, containers take many forms and can be constructed of a wide variety of materials. Early civilizations used containers primarily for storing food and water; however, over time, they were also needed for religious ceremonies, cultural practices, personal adornment, and other aspects of daily life. They have become such an integral part of human existence and expression, they often become artworks in their own right. With objects from the 13th century BCE to the present, this exhibition explores the world of possibilities these objects hold.

EXHIBITIONS



Japanese



Chinese

Chinese  
**Incense Burner with Open Lid**, 14th–17th century, Ming Dynasty, 1368–1644  
Cloisonné on copper with silver lid  
2<sup>3</sup>/<sub>16</sub> x 3 inches  
Gift of F. Karel Wiest, 1982.320

Japanese  
**Flower Basket**, n.d., Showa Period  
Bamboo and tin  
12<sup>1</sup>/<sub>2</sub> x 6 x 5<sup>1</sup>/<sub>4</sub> inches  
Gift of F. Karel Wiest in Memory of Julie A. Garrett, 1982.423

Komai  
Japanese  
**Two-door Cabinet**, 19th–20th century, Meiji Period, 1868–1912  
Gold and gold-bronze  
2<sup>3</sup>/<sub>4</sub> x 2<sup>3</sup>/<sub>8</sub> x 1<sup>7</sup>/<sub>16</sub> inches  
Gift of Dr. and Mrs. Leo S. Figiel, and Dr. and Mrs. Steven J. Figiel, 1982.398



Komai

# Minglings A Journey Across Time

through 10.9.22

Harris-Burger Gallery

For the past seven years, Gerhardt Knodel has focused on the expressive potential residing in a tapestry remnant from China's Ming Dynasty (1368–1644). While portions of the tapestry were deteriorating, he isolated 40 fragments that included images of butterflies, flowering branches, undulating lines, and a blue sky. Each small piece of finely woven silk became new compositions that served as artistic inspiration. Featuring a series of drawings, fiber artwork, and mixed-media objects, this exhibition leads you on a journey between cultures, beginning in China and arriving at the artist's studio in Pontiac, Michigan. It also explores the migration of objects through time and how they carry with them their cultural identity as well as being reinterpreted in the context of the present, including the events of the pandemic.



EXHIBITIONS



Gerhardt Knodel  
American, born 1940  
**Destination Lisbon**, 2017  
Mixed natural and synthetic fibers  
64 x 45 inches  
Courtesy of the artist  
Photo credit: P D Rearik

Gerhardt Knodel  
American, born 1940  
**It Had to Be You: Genomia**, 2015–2017  
Mixed natural and synthetic fibers  
74 x 92 x 6 inches  
Courtesy of the artist  
Photo credit: P D Rearik



May

## Thinking Hurts Too Much

*Thinking Hurts Too Much* is a slowly scrolling video that incorporates found and manipulated internet footage, creating a panoramic collage of gyrating, pulsing, and writhing characters to expose America's—and the world's—desire for the sensational. Cameron

Gray pieces together thousands of pop culture images to offer a provocative and poignant depiction of excess and the constant urge to seek new and more extreme visual stimulation.

The video is an immersive experience that is constantly changing, as your eyes move from one area to the next, dancing across a screen that never stops shifting. In doing so, Gray makes us aware of the passage of time as we witness the reactions of other viewers standing next to us—reminding us of the separation that results from unshared memory.



Cameron Gray  
Swiss, born 1980  
*Thinking Hurts Too Much*, 2013  
Video  
Museum purchase with funds from the Collection Endowment, 2013.63

June–August

## The Way Things Go

In a warehouse, artists Peter Fischli and David Weiss build a structure made from common household items. The film enlists an assortment of objects, including tires and chairs, as components in a domino-like chain reaction. Then, using fire, water, gravity, and chemistry, they create a self-destructing performance of precisely crafted chaos.

The film's humor lies in the deliberate misuse of these objects, as they are co-opted into performing roles outside their normal function, reminiscent of silent films. In the film, the actors are steaming kettles mounted on roller skates, rickety stepladders, buckets, bottles, and planks.



Peter Fischli and David Weiss  
Swiss, born 1952 and 1946–2012  
*The Way Things Go*, 1987  
Video  
Image courtesy of the artists.

The artworks listed here are on loan from the FIA to the following exhibitions:

### Charles E. Burchfield: A Lifetime of Themes

Burchfield Penney Art Center at Buffalo State College  
Buffalo, New York  
12.10.21 – 5.1.22

Charles Burchfield  
American, 1893–1967  
*North Woods in Spring*, 1951–1964  
Watercolor on paper  
56 x 40 inches  
Bequest of Mary Mallery Davis, 1990.31

### Bob Thompson: This House is Mine

Smart Museum of Art, The University of Chicago  
Chicago, Illinois  
2.10.22 – 5.15.22

Bob Thompson  
American, 1937–1966  
*Study for St. George and the Dragon*, 1961  
Crayon on paper  
21 x 14 inches  
Museum purchase with funds from the Collection Endowment, 2015.61

### Roy Lichtenstein: History in the Making, 1948–1960

Columbus Museum of Art  
Columbus, Ohio  
3.4.22 – 6.5.22

Nasher Museum of Art at Duke University  
Durham, North Carolina  
8.25.22 – 1.8.23

Roy Lichtenstein  
American, 1923–1997  
*Mechanism, Cross Section*, ca. 1954  
Oil with sgraffito on canvas  
40 x 54 inches  
Gift of Messrs. Samuel N. Tomkin and Sidney Freedman, 1956.2

### Scandinavian Design and the United States

Oslo Nasjonalmuseet  
Oslo, Norway  
3.17.22 – 8.7.22

Lillian Holm  
American, born Sweden, 1896–1979  
*First Sight of New York*, ca. 1930  
Linen, cotton, wool, viscose rayon  
82 x 64½ inches  
Gift of Mrs. Lillian Holm in memory of Ralph T. Sayles, 1965.14

### Africa, Imagined: Reflections on Modern and Contemporary Art

Kalamazoo Institute of Arts  
Kalamazoo, Michigan  
1.22.22 – 5.1.22

Bobo  
Burkina Faso  
*Plank Mask, Do Society*, n.d.  
Polychromed wood  
35 x 9 x 9½ inches  
Gift of Justice and Mrs. G. Mennen Williams, 1973.19

Baule  
Côte d'Ivoire  
*Kple Kple Mask*, n.d.  
Polychromed wood  
15¼ x 9½ x 4 inches  
Gift of Justice and Mrs. G. Mennen Williams, 1973.13

Dogon  
Republic of Mali  
*Kanaga Mask*, n.d.  
Polychromed wood  
38 x 23¼ x 7 inches  
Gift of Justice and Mrs. G. Mennen Williams, 1973.56

Guro  
Côte d'Ivoire  
*Antelope Mask (Zamble)*, n.d.  
Polychromed wood  
15⅞ x 5¼ x 3½ inches  
Gift of Justice and Mrs. G. Mennen Williams, 1973.14

Yoruba  
Federal Republic of Nigeria  
*Osanyin Staff*, n.d.  
Iron  
25¼ x 8½ x 9½ inches  
Museum purchase with funds from the Collection Endowment, 2018.71

### Imprinted: Illustrating Race

Norman Rockwell Museum  
Stockbridge, Massachusetts  
6.11.22 – 10.30.22

Romare Bearden  
American, 1911–1988  
*Prevalence of Ritual: Reverend John's Sermon No. 1*, 1973  
Collage and acrylic on board  
56 x 46 inches  
Museum purchase, 1973.69

Jacob Lawrence  
American, 1917–2000  
*South African Gold Miners*, 1946  
Gouache on paper  
20¼ x 19½ inches  
Museum purchase with a grant from the Harvey J. Mallery Charitable Trust, 1991.23

Kara Walker  
American, born 1969  
*Keys to the Coop*, 1997  
Linocut on paper  
46 x 60 inches  
Museum purchase, 2005.19

Charles White  
American, 1918–1979  
*Wanted Poster Series #17*, 1971  
Oil and pencil on poster board  
60 x 30 inches  
Gift of Mr. and Mrs. B. Morris Pelavin, 1971.43

### Dreamed Childhood – Bonnard, the Nabis and Childhood

Bonnard Museum  
Le Cannet, France  
7.2.22 – 11.6.22

Pierre Bonnard  
French, 1867–1947  
*La Lampe*, ca. 1899  
Oil on academy board mounted on panel  
22¼ x 27½ inches  
Gift of the Whiting Foundation and Mr. and Mrs. Donald E. Johnson, 1977.25



Pierre Bonnard  
*La Lampe*



## Featured Acquisitions

The most recent gift of ceramics to the FIA's contemporary craft collection epitomizes the collectors' philosophy to share their passion with others. Dr. Robert (Bob) and Deanna (Debbie) Harris Burger have been collecting ceramic works of art since the 1970s. They were inspired by the beautiful forms, colors, and innovative techniques used to create the artworks. Debbie has ties to Flint, having enjoyed ceramic classes at the FIA Art School in her youth. Today, the Burgers reside in Florida and together have built an impressive art collection using the knowledge they have gained through studying and visiting exhibitions, galleries, studios, private collections, and taking studio classes. According to the Burgers, "As collectors, we are merely caretakers and caregivers of the objects we have gathered. We only own and enjoy the art for a period of time and then it is our responsibility to allow future generations to enjoy and learn from what we were fortunate to accumulate."

Since 2005, the Burgers have donated more than 420 works of art to the FIA, including ceramics and works on paper. In 2016, the FIA presented *Function, Form, and Fantasy*, an exhibition of the Burger Collection that offered a unique look at the recent history of ceramics—from the 1960s to present day—highlighting the diversity of styles and intense creativity of expression in the medium of clay. From imaginative teapots and fantastical vessels to abstract and figurative sculpture, this gift adds 35 works by 33 artists. The gift includes important works by major names in ceramics, such as Ralph Bacerra, Bennett Bean, Stephen De Staebler, Ruth Duckworth, Shoji Hamada, Jun Kaneko, Ronald Nagle, Lucie Rie, and Peter Voulkos.



Bennett Bean, *Untitled*



Peter Voulkos, *Untitled*



Stephen De Staebler, *Standing Woman with Blue Horns*

## Recent Acquisitions

### Daniel Anderson

American, born 1945  
**Purina Chow Tea Set**, 2008  
Stoneware  
9<sup>3</sup>/<sub>4</sub> x 8<sup>1</sup>/<sub>2</sub> x 7<sup>1</sup>/<sub>4</sub> inches  
Gift of Dr. Robert and Deanna Harris Burger, 2021.192

### Adrian Arleo

American, born 1960  
**Dreaming of Rama Teapot**, 2001  
Stoneware  
8<sup>1</sup>/<sub>8</sub> x 16<sup>1</sup>/<sub>4</sub> x 6<sup>3</sup>/<sub>4</sub> inches  
Gift of Dr. Robert and Deanna Harris Burger, 2021.193

### Ralph Bacerra

American, 1938–2008  
**Untitled**, 1998  
Stoneware  
25<sup>1</sup>/<sub>2</sub> x 18<sup>5</sup>/<sub>8</sub> x 14<sup>1</sup>/<sub>4</sub> inches  
Gift of the Burger Family Limited Partnership, 2021.194

### Bennett Bean

American, born 1941  
**Untitled**, 2000  
Earthenware  
12 x 11 x 6 inches  
Gift of Dr. Robert and Deanna Harris Burger, 2021.195

### Syd Carpenter

American, born 1953  
**Between a Rock**, 2008  
Stoneware  
16<sup>1</sup>/<sub>2</sub> x 25 x 12<sup>1</sup>/<sub>2</sub> inches  
Gift of Dr. Robert and Deanna Harris Burger, 2021.196

### Hans Coper

British, born Germany, 1920–1981  
**Untitled**, 1975  
Stoneware  
7 x 4<sup>1</sup>/<sub>8</sub> x 3<sup>1</sup>/<sub>2</sub> inches  
Gift of Dr. Robert and Deanna Harris Burger, 2021.197

### Stephen De Staebler

American, 1933–2011  
**Standing Woman with Blue Horns**, 1976  
Stoneware  
101<sup>1</sup>/<sub>8</sub> x 12<sup>1</sup>/<sub>2</sub> x 15<sup>1</sup>/<sub>4</sub> inches  
Gift of Dr. Robert and Deanna Harris Burger, 2021.198

### Richard DeVore

American, 1933–2006  
**Untitled**, 1978  
Stoneware  
13<sup>1</sup>/<sub>8</sub> x 12<sup>3</sup>/<sub>4</sub> x 10<sup>1</sup>/<sub>4</sub> inches  
Gift of Dr. Robert and Deanna Harris Burger, 2021.199

### Ruth Duckworth

American, born Germany, 1919–2009  
**Black Angel**, 1999  
Porcelain  
23 x 8<sup>1</sup>/<sub>8</sub> x 6<sup>5</sup>/<sub>8</sub> inches  
Gift of Dr. Robert and Deanna Harris Burger, 2021.200

### Dorothy Feibleman

American, born 1951  
**Lunar Survival**, 2006  
Soft-paste parian  
5<sup>1</sup>/<sub>2</sub> x 9<sup>1</sup>/<sub>4</sub> x 7<sup>7</sup>/<sub>8</sub> inches  
Gift of the Burger Family Limited Partnership, 2021.201

### Shoji Hamada

Japanese, 1894–1978  
**Untitled**, 1973  
Stoneware  
8<sup>3</sup>/<sub>4</sub> x 7 x 7 inches  
Gift of Dr. Robert and Deanna Harris Burger, 2021.202

### Sergei Isupov

American, born Russia, 1963  
**Zombie Fish**, 1992  
Porcelain  
50 x 13<sup>1</sup>/<sub>2</sub> x 11<sup>3</sup>/<sub>4</sub> inches  
Gift of Dr. Robert and Deanna Harris Burger, 2021.203

### Sergei Isupov

American, born Russia, 1963  
**Soldier**, 1990  
Porcelain  
9<sup>5</sup>/<sub>8</sub> x 4<sup>7</sup>/<sub>8</sub> x 4<sup>1</sup>/<sub>2</sub> inches  
Gift of Dr. Robert and Deanna Harris Burger, 2021.204

### Sergei Isupov

American, born Russia, 1963  
**Lady**, 1990  
Porcelain  
8<sup>7</sup>/<sub>8</sub> x 3<sup>7</sup>/<sub>8</sub> x 3<sup>5</sup>/<sub>8</sub> inches  
Gift of Dr. Robert and Deanna Harris Burger, 2021.205

### Jun Kaneko

American, born Japan, 1942  
**Dango**, 2005  
Stoneware  
44 x 28 x 16 inches  
Gift of Dr. Robert and Deanna Harris Burger, 2021.206

### Chieko Katsumata

Japanese, born 1950  
**Untitled**, 2006  
Stoneware  
8<sup>1</sup>/<sub>4</sub> x 12<sup>1</sup>/<sub>4</sub> x 10<sup>3</sup>/<sub>4</sub> inches  
Gift of Dr. Robert and Deanna Harris Burger, 2021.207

### Bernard Leach

English, 1887–1979  
**Untitled**, 1960  
Stoneware  
7<sup>3</sup>/<sub>4</sub> x 5<sup>1</sup>/<sub>4</sub> x 3<sup>1</sup>/<sub>4</sub> inches  
Gift of Dr. Robert and Deanna Harris Burger, 2021.208

### Thérèse Lebrun

Belgian, born 1956  
**Coral**, 2014  
Paper porcelain  
6<sup>1</sup>/<sub>4</sub> x 15<sup>1</sup>/<sub>2</sub> x 10 inches  
Gift of Dr. Robert and Deanna Harris Burger, 2021.209

### Sara Lisch

American, born Canada, 1966  
**Lion's Journey**, 2002  
Stoneware  
21<sup>3</sup>/<sub>4</sub> x 18<sup>1</sup>/<sub>2</sub> x 9<sup>1</sup>/<sub>2</sub> inches  
Gift of Dr. Robert and Deanna Harris Burger, 2021.210

### Michael Lucero

American, born 1953  
**Hunter**, 1998  
Whiteware, cement, paint  
23<sup>1</sup>/<sub>4</sub> x 10<sup>1</sup>/<sub>8</sub> x 6<sup>1</sup>/<sub>2</sub> inches  
Gift of Dr. Robert and Deanna Harris Burger, 2021.211

### Ronald Nagle

American, born 1939  
**E-Boshi 1**, 1984  
Stoneware  
17<sup>5</sup>/<sub>8</sub> x 18<sup>3</sup>/<sub>4</sub> x 15<sup>1</sup>/<sub>2</sub> inches  
Gift of Dr. Robert and Deanna Harris Burger, 2021.212



Eric Serritella  
*Birch Stump Teapot*

### Andy Nasisse

American, born 1946  
**Untitled**, 2006  
Stoneware  
23<sup>3</sup>/<sub>4</sub> x 14<sup>1</sup>/<sub>2</sub> x 7<sup>1</sup>/<sub>2</sub> inches  
Gift of Dr. Robert and Deanna Harris Burger, 2021.213

### Richard Notkin

American, born 1948  
**Heart Teapot: Ironclad Hostage II**, 2001  
Stoneware  
6<sup>3</sup>/<sub>8</sub> x 10<sup>3</sup>/<sub>4</sub> x 5<sup>1</sup>/<sub>2</sub> inches  
Gift of the Burger Family Limited Partnership, 2021.214

### Ursula Morley Price

British, born 1936  
**Plume de Fountain Form**, 2009  
Stoneware  
8<sup>1</sup>/<sub>4</sub> x 6<sup>7</sup>/<sub>8</sub> x 6<sup>7</sup>/<sub>8</sub> inches  
Gift of Dr. Robert and Deanna Harris Burger, 2021.215

### Lucy Rie

British, born Austria, 1902–1995  
**Untitled**, ca. 1985  
Stoneware  
3<sup>3</sup>/<sub>4</sub> x 8 x 8 inches  
Gift of Dr. Robert and Deanna Harris Burger, 2021.216

### Bonnie Seeman

American, born 1969  
**Untitled**, 2002  
Porcelain  
8<sup>3</sup>/<sub>8</sub> x 7<sup>1</sup>/<sub>2</sub> x 7<sup>3</sup>/<sub>4</sub> inches  
Gift of Dr. Robert and Deanna Harris Burger, 2021.217

### Eric Serritella

American, born 1963  
**Birch Stump Teapot**, 2009  
Stoneware  
6<sup>3</sup>/<sub>4</sub> x 14<sup>3</sup>/<sub>4</sub> x 5<sup>7</sup>/<sub>8</sub> inches  
Gift of Dr. Robert and Deanna Harris Burger, 2021.218

### Richard Shrewsbury

American, born 1960  
**Godkey**, 2000  
Stoneware, cloth  
32<sup>3</sup>/<sub>4</sub> x 15<sup>5</sup>/<sub>8</sub> x 13<sup>1</sup>/<sub>2</sub> inches  
Gift of Dr. Robert and Deanna Harris Burger, 2021.219

### Paul Soldner

American, 1921–2011  
**Untitled**, 1997  
Stoneware  
22 x 4<sup>7</sup>/<sub>8</sub> x 4<sup>1</sup>/<sub>4</sub> inches  
Gift of Dr. Robert and Deanna Harris Burger, 2021.220

### Claudia Tarantino

American, born 1944  
**A Flower Full of Figs Teapot**, 2002  
Porcelain  
4<sup>1</sup>/<sub>4</sub> x 10<sup>1</sup>/<sub>2</sub> x 4<sup>5</sup>/<sub>8</sub> inches  
Gift of Dr. Robert and Deanna Harris Burger, 2021.221

### Jerilyn Virden

American, born 1973  
**Split Green Ellipse**, 2005  
Earthenware  
10<sup>1</sup>/<sub>2</sub> x 21<sup>1</sup>/<sub>2</sub> x 13<sup>3</sup>/<sub>4</sub> inches  
Gift of Dr. Robert and Deanna Harris Burger, 2021.222



Recent Acquisitions

**Peter Voulkos**  
American, 1929–2002  
*Untitled*, 2000  
Stoneware  
22 x 22½ x 5¾ inches  
Gift of Dr. Robert and Deanna Harris Burger, 2021.223

**Jason Walker**  
American, born 1973  
*Steering Wheel*, 2007  
Porcelain  
11⅞ x 12½ x 12½ inches  
Gift of Dr. Robert and Deanna Harris Burger, 2021.224

**Akiyama Yo**  
Japanese, born 1953  
*Untitled*, 2006  
Stoneware  
17½ x 22½ x 13½ inches  
Gift of Dr. Robert and Deanna Harris Burger, 2021.225

**Irina Zaytceva**  
Russian, born 1957  
*Twins*, 2013  
Porcelain  
10¾ x 7¼ x 3⅝ inches  
Gift of Dr. Robert and Deanna Harris Burger, 2021.226

**Bennett Bean**  
American, born 1941  
*DNA Portrait #1*, 2002  
Vitreograph on paper  
14 x 11 inches  
Gift of John Littleton and Kate Vogel, 2021.227

**Bennett Bean**  
American, born 1941  
*Self Portrait with DNA*, 2002  
Vitreograph on paper  
30 x 24 inches  
Gift of John Littleton and Kate Vogel, 2021.228

**Cynthia Bringle**  
American, born 1939  
*Dye Shed Porch*, 2005  
Vitreograph on paper  
15 x 22 inches  
Gift of John Littleton and Kate Vogel, 2021.229

**Cynthia Bringle**  
American, born 1939  
*Red Pots*, 2005  
Vitreograph on paper  
20 x 16 inches  
Gift of John Littleton and Kate Vogel, 2021.230

**Erwin Eisch**  
German, 1927–2022  
*Kristallnacht - Opus 1*, 1991  
Vitreograph on paper  
14¼ x 11¼ inches  
Gift of John Littleton and Kate Vogel, 2021.231

**Erwin Eisch**  
German, 1927–2022  
*Kristallnacht - Opus 2*, 1991  
Vitreograph on paper  
14¼ x 11¼ inches  
Gift of John Littleton and Kate Vogel, 2021.232

**Erwin Eisch**  
German, 1927–2022  
*Kristallnacht - Opus 3*, 1991  
Vitreograph on paper  
14¼ x 11¼ inches  
Gift of John Littleton and Kate Vogel, 2021.233

**Erwin Eisch**  
German, 1927–2022  
*Kristallnacht - Opus 4*, 1991  
Vitreograph on paper  
11¼ x 14¼ inches  
Gift of John Littleton and Kate Vogel, 2021.234

**Erwin Eisch**  
German, 1927–2022  
*Kristallnacht - Opus 5*, 1991  
Vitreograph on paper  
14¼ x 11¼ inches  
Gift of John Littleton and Kate Vogel, 2021.235

**Erwin Eisch**  
German, 1927–2022  
*Kristallnacht - Opus 6*, 1991  
Vitreograph on paper  
14¼ x 11¼ inches  
Gift of John Littleton and Kate Vogel, 2021.236

**Erwin Eisch**  
German, 1927–2022  
*Kristallnacht - Opus 7*, 1991  
Vitreograph on paper  
14¼ x 11¼ inches  
Gift of John Littleton and Kate Vogel, 2021.237

**Erwin Eisch**  
German, 1927–2022  
*Kristallnacht - Opus 8*, 1991  
Vitreograph on paper  
14¼ x 11¼ inches  
Gift of John Littleton and Kate Vogel, 2021.238

**Erwin Eisch**  
German, 1927–2022  
*Kristallnacht - Opus 9*, 1991  
Vitreograph on paper  
11¼ x 14¼ inches  
Gift of John Littleton and Kate Vogel, 2021.239

**Erwin Eisch**  
German, 1927–2022  
*Kristallnacht - Opus 10*, 1991  
Vitreograph on paper  
14¼ x 11¼ inches  
Gift of John Littleton and Kate Vogel, 2021.240

**John Parker Glick**  
American, 1938–2017  
*A Potter's House*, 1988  
Vitreograph on paper  
18 x 23½ inches  
Gift of John Littleton and Kate Vogel, 2021.241

**Sergei Isupov**  
American, born Russia, 1963  
*Buzz*, 2000  
Vitreograph on paper  
24 x 18 inches  
Gift of John Littleton and Kate Vogel, 2021.242

**Sergei Isupov**  
American, born Russia, 1963  
*Metamorphosis*, 2004  
Vitreograph on paper  
23¾ x 17½ inches  
Gift of John Littleton and Kate Vogel, 2021.243

**Richard Jolley**  
American, born 1952  
*Reflecting on Classicism*, 2003  
Vitreograph on paper  
30 x 22½ inches  
Gift of John Littleton and Kate Vogel, 2021.244

**Richard Jolley**  
American, born 1952  
*Tabula Rasa*, 2003  
Vitreograph on paper  
24 x 24 inches  
Gift of John Littleton and Kate Vogel, 2021.245

**Stanislav Libenský**  
Czech, 1921–2002  
*Untitled*, 1996  
Vitreograph on paper  
18 x 20 inches  
Gift of John Littleton and Kate Vogel, 2021.246

**Harvey K. Littleton**  
American, 1922–2013  
*00 Buckshot - State III*, 2001  
Vitreograph on paper  
17¾ x 15½ inches  
Gift of John Littleton and Kate Vogel, 2021.247

**Harvey K. Littleton**  
American, 1922–2013  
*Aurora - State II*, 2004  
Vitreograph on paper  
11 x 20 inches  
Gift of John Littleton and Kate Vogel, 2021.248

**Paul Stankard**  
American, born 1943  
*Earth Clump*, 2007  
Vitreograph on paper  
17½ x 20 inches  
Gift of John Littleton and Kate Vogel, 2021.249



Sergei Isupov, *Buzz*



Paul Stankard, *Walt Whitman's Garden*

**Paul Stankard**  
American, born 1943  
*Walt Whitman's Garden*, 2007  
Vitreograph on paper  
24 x 16 inches  
Gift of John Littleton and Kate Vogel, 2021.250

**Therman Statom**  
American, born 1953  
*Blue Queen*, 1999  
Vitreograph on paper  
24 x 18 inches  
Gift of John Littleton and Kate Vogel, 2021.251

**Therman Statom**  
American, born 1953  
*Cuatro Reyes*, 2008  
Vitreograph on paper  
30 x 24 inches  
Gift of John Littleton and Kate Vogel, 2021.252

**Ann Woff**  
Swedish/German, born 1937  
*Small Goddesses*, 1984  
Vitreograph on paper  
9½ x 9½ inches  
Gift of John Littleton and Kate Vogel, 2021.253

**Joseph Constantino**  
American, born 1931  
*Arches and Reflections*, 2015  
Digital print on paper  
13 x 19 inches  
Gift of the artist, 2021.279

**Joseph Constantino**  
American, born 1931  
*Freedom Tower and Twin Towers*, n.d.  
Digital print on paper  
19 x 13 inches  
Gift of the artist, 2021.280

**Joseph Constantino**  
American, born 1931  
*Freedom Tower from Fulton Street*, 2016  
Digital print on paper  
19 x 13 inches  
Gift of the artist, 2021.281

**Joseph Constantino**  
American, born 1931  
*Leepa-Rattner Corner*, 2013  
Digital print on paper  
19 x 13 inches  
Gift of the artist, 2021.282

**Joseph Constantino**  
American, born 1931  
*Outside Wall and Arches*, 2014  
Digital print on paper  
13 x 19 inches  
Gift of the artist, 2021.283

**Joseph Constantino**  
American, born 1931  
*Twin Towers and Freedom Tower*, n.d.  
Digital print on paper  
19 x 13 inches  
Gift of the artist, 2021.284

**Josef Albers**  
American, born Germany, 1888–1976  
*Homage to the Square*, 1964  
Screenprint on paper  
19 x 15 inches  
Gift of Dr. Seymour and Barbara K. Adelson, 2021.285

**Josef Albers**  
American, born Germany, 1888–1976  
*Homage to the Square*, 1964  
Screenprint on paper  
19 x 15 inches  
Gift of Dr. Seymour and Barbara K. Adelson, 2021.286

**Sheldon S. Iden**  
American, 1933–1993  
*Cave Light*, 1971  
Charcoal on paper  
17½ x 23 inches  
Gift of Dr. Seymour and Barbara K. Adelson, 2021.287

**Sheldon S. Iden**  
American, 1933–1993  
*Mirrors*, 1992  
Ink on paper  
8½ x 8⅜ inches  
Gift of Dr. Seymour and Barbara K. Adelson, 2021.288

**Bruce Piermarini**  
American, born 1953  
*Archangel*, 2006  
Acrylic and foam on canvas  
74 x 144 x 10 inches  
Gift of the artist, 2021.289

**Bruce Piermarini**  
American, born 1953  
*Into the Mist*, 2010  
Acrylic on canvas  
64 x 74 inches  
Gift of the artist, 2021.290

**Bruce Piermarini**  
American, born 1953  
*Fairy Tail*, 2009  
Acrylic on canvas  
74 x 64 inches  
Gift of the artist, 2021.291

**Shimon Okshteyn**  
American, born Ukraine, 1951–2020  
*Ambulance Stretcher*, 2002  
Oil on canvas  
81 x 107 inches  
Gift of Tatyana Okshteyn, 2021.292

**Shimon Okshteyn**  
American, born Ukraine, 1951–2020  
*Bustle*, 1996  
Graphite and pencil on paper mounted on wood  
18 x 25 inches  
Gift of Tatyana Okshteyn, 2021.293

**Shimon Okshteyn**  
American, born Ukraine, 1951–2020  
*Clasp*, 2002  
Graphite on cardboard  
14 x 10 inches  
Gift of Tatyana Okshteyn, 2021.294

**Joseph Vogel**  
American, born Poland, 1911–1998  
*None so Blind*, ca. 1935–1943  
Lithograph on paper  
10⅞ x 17 inches  
Gift of Dr. Jamile Trueba Lawand, 2021.301

**Rafael Ferrer**  
Puerto Rican, born 1933  
*La Experiencia*, 1985  
Oil on canvas  
60 x 90 inches  
Gift of Nancy Hoffman and Peter N. Greenwald, 2021.302

**Abraham Pov**  
Inuit, 1927–1994  
*Duck*, ca. 1960  
Soapstone  
3¾ x 5 x 2 inches  
Gift of Jane M. Bingham, 2021.303



Bruce Piermarini, *Fairy Tail*

**Inuit**  
American  
*Dog Head*, ca. 1960  
Soapstone  
2¼ x 1½ x 1¾ inches  
Gift of Jane M. Bingham, 2021.304

**Inuit**  
American  
*Walrus*, ca. 1960  
Soapstone with walrus ivory  
3¼ x 10¾ x 3½ inches  
Gift of Jane M. Bingham, 2021.305

**Pat Steir**  
American, born 1940  
*Wolf Waterfall*, 2001  
Screenprint on paper  
48 x 24 inches  
Museum purchase from the Sura Levine Graphic Arts Acquisition Fund, 2021.306

**John R. Henry**  
American, born 1943  
*Star Pointer*, 2005  
Painted steel  
840 x 216 x 372 inches  
Museum purchase thanks to a grant from the Charles Stewart Mott Foundation, 2021.307



**MAY 6, 7 @ 7:30p, MAY 8 @ 2:00p**

### Hive

(Albanian-Kosovan, 2021) Directed by Blerta Basholli, 84 min., subtitled, not rated

Sundance triple award winner *HIVE* is a searing drama based on the true story of Fahrije, who has battled grief and financial struggle since her husband went missing during the war in Kosovo. She struggles not only to keep her family afloat but against a hostile community who seeks to violently undermine the independence and sisterhood she is determined to gain.

**MAY 13, 14 @ 7:30p,  
MAY 15 @ 2:00p**

### Licorice Pizza

(U.S., 2021) Directed by Paul Thomas Anderson, 133 min., rated R

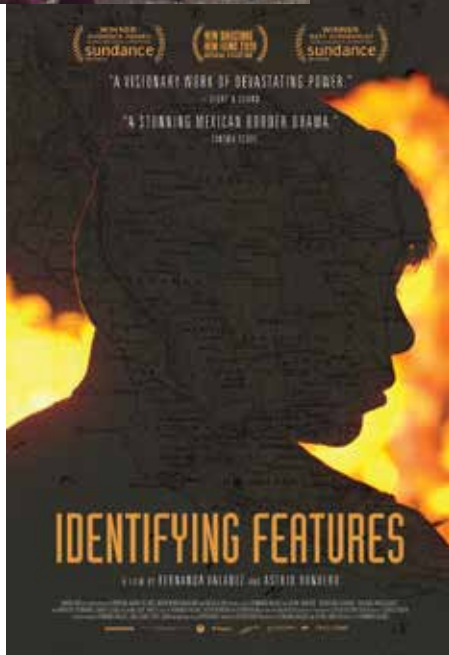
Two teenagers—played by rising stars Alana Haim and Cooper Hoffman—experience the joys and pains of first love in the San Fernando Valley circa 1971. Sean Penn and Bradley Cooper also appear in Paul Thomas Anderson's nostalgic comedy-drama.

**MAY 20, 21 @ 7:30p,  
MAY 22 @ 2:00p**

### Identifying Features

(Mexico, 2020) Directed by Fernanda Valadez, 95 min., subtitled

After months of silence, a mother sets out on a journey to find out what happened to her son. *Identifying Features* is a compelling and painful story of immigration.



Public health and safety will be considered in terms of theater capacity and other conditions for in-person screenings.

#### Admission

\$7 non-members  
\$6 FIA members  
\$5 FOMA members

Tickets available at the door or at [flintarts.org/films](http://flintarts.org/films)

Film titles and dates are subject to change

Films are supported by



Screenwriter sponsor



Merrill Lynch

Media sponsor



## Karen Schneider Jewish Film Festival of Flint

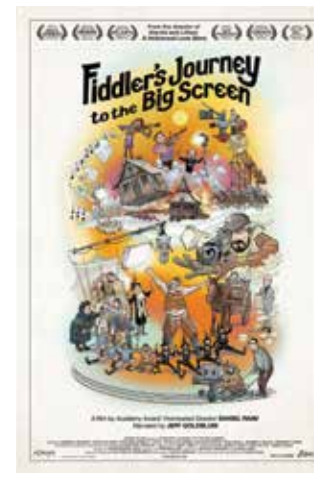
The 15th annual collaboration between the Flint Jewish Federation and the FIA presents films on Jewish life and culture.

**MAY 1 @ 7:00p**

### Fiddler's Journey to the Big Screen

(Australia, 2018) Directed by Danny Ben-Moshe, 76 min., no MPAA rating

Behind-the-scenes footage, interviews with cast and crew, and never-before-seen stills provide insight into the making of the beloved musical film *Fiddler on the Roof*, directed by Norman Jewison.



**MAY 2 @ 7:00p**

### Tiger Within

(Canada, 2018) Directed by Rene Balcer and Nicola Zavaglia, 88 min., no MPAA rating

A Holocaust survivor develops a life-changing friendship with a homeless, anti-Semitic sex worker in Los Angeles. This was iconic actor Ed Asner's last film.



**MAY 3 @ 7:00p**

### Image of Victory

(Hungary, 2017) Directed by Eva Gardos, 95 min., subtitled, no MPAA rating

This film examines the temporary loss of Kibbutz Nitzanim to the Egyptian forces in the war of 1948. The story is told from two points of view: an Egyptian propaganda film maker on the front; and the Kibbutz community.



#### Admission

\$5 at the door  
Ticket packages available



**MAY 4 @ 7:00p**

### Neighbors

(Israel, 2018) Directed by Tzahi Grad, 93 min., subtitled, no MPAA rating

Sero, 6, and his family are the last Jewish family in a 1980s Kurdish community near the Syrian/Turkish border where Jews and Kurds previously coexisted peacefully but now face rising tensions. Sero struggles to resist dangerous ideologies of his instructor, while other students embrace them at the expense of longtime Jewish neighbors.



**MAY 5 @ 7:00p**

### Greener Pastures

(Argentina/Spain, 2018) Directed by Pablo Solarz, 91 min., subtitled, no MPAA rating

When a retired senior is forced into a nursing facility, he must find a way back to his beloved family home. When love, cannabis, and crime come into play, will he be willing to risk it all?



Sponsored by **Dort Financial**  
CREDIT UNION

The Dort Financial Credit Union Summer Film Series is dedicated to former FIA Film Curator Ed Bradley, who passed away unexpectedly earlier this year. In addition to curating the FOMA film series, Ed taught film appreciation classes at the FIA. This summer's selections, featuring films by Woody Allen and Alfred Hitchcock, as well as musicals and film noir, were handpicked for his classes,



Ed Bradley

and includes some of his favorites. We hope that you join us in the theater to honor Ed and see these movies that he felt were important works in the history of cinema.

The series begins with a presentation **Thursday, on June 2 at 7:30p** with one of Ed Bradley's favorite movie musicals *Top Hat*. Prior to the screening, a short program will commemorate Ed Bradley hosted by FIA Executive Director John Henry, FOMA Film Aficionado Michael Rucks, and Film Society Legacy member Linda Pylypiw. Ed's family will be in attendance.

Public health and safety will be considered in terms of theater capacity and other conditions for in-person screenings.

**JUNE 2, 3 @ 7:30p,  
JUNE 5 @ 2:00p**

### Top Hat

(U.S., 1935) Directed by Mark Sandrich, 101 min., not rated

In London, American dance star Jerry Travers falls for Dale Tremont after he awakens her by dancing on the floor above her hotel room. When Dale mistakes unattached Jerry for his show's married producer, Horace Hardwick, complications ensue—especially once Horace's wife, Jerry's butler, and Dale's suitor enter the fray.

**JUNE 10, 11 @ 7:30p, JUNE 12 @ 2:00p**

### Eat Drink Man Woman

(Taiwan, 1994) Directed by Ang Lee, 124 min., subtitled, not rated

This charming early work by Ang Lee examines the relationships within a Taipei family, which includes a master chef who has lost his sense of taste and lives among his three grown daughters.

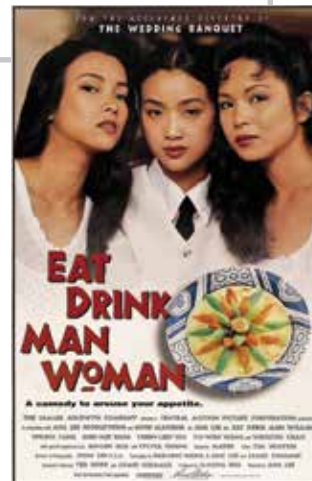
**JUNE 17, 18 @ 7:30p, June 19 @ 2:00p**

### Annie Hall

(U.S., 1977) Directed by Woody Allen, 93 min., rated PG

In flashback, successful but insecure New York writer-comedian Alvy Singer (Woody Allen) recalls the past year and his relationship with Annie Hall (Diane Keaton), a sexy, smart but slightly scatterbrained aspiring nightclub singer.

**Admission**  
\$5 members  
\$6 non-members  
\$4 FOMA members



**JUNE 24, 25 @ 7:30p, JUNE 26 @ 2:00p**

### Out of the Past

(U.S., 1947) Directed by Jacques Tourneur, 97 min., not rated

A great cast—noir icon Robert Mitchum, with Kirk Douglas and Jane Greer—highlights a story of a small-town gas station attendant whose encounter with a gambler forces him to re-enter the lives of faces from his past.

**JULY 8, 9 @ 7:30p, JULY 10 @ 2:00p**

### 12 Angry Men

(U.S., 1957) Directed by Sidney Lumet, 96 min., not rated

Set almost entirely within the confines of a jury room during deliberation in a murder case, the Sidney Lumet-directed drama about the power of persuasion offers terrific ensemble acting from a cast headed by Henry Fonda.

**JULY 15, 16 @ 7:30p, JULY 17 @ 2:00p**

### The Magnificent Ambersons

(U.S., 1942) Directed by Orson Welles, Fred Fleck and Robert Wise, 88 min., not rated

Based on Booth Tarkington's novel about the decline of a well-to-do Midwestern family, Orson Welles' follow-up to *Citizen Kane* was mutilated by its studio and ignored by moviegoers of its time, but has gained lasting acclaim.

**JULY 22, 23 @ 7:30p, JULY 24 @ 2:00p**

### Rashomon

(Japan, 1950) Directed by Akira Kurosawa, 88 min, subtitled, not rated

Akira Kurosawa's Japanese drama, told from multiple points of view, has a title that became part of a cultural lexicon.



Film titles and dates are subject to change.



**JULY 29, 30 @ 7:30p, JULY 31 @ 2:00p**

### Vertigo

(U.S., 1958) Directed by Alfred Hitchcock, 128 min., rated PG

Considered by some as a flop upon release, this psychological drama has become one of Hitchcock's signature works. James Stewart plays an acrophobic ex-detective obsessed with a mysterious young woman (Kim Novak).

**AUGUST 5, 6 @ 7:30p, AUGUST 7 @ 2:00p**

### Waiting for Guffman

(U.S., 1997) Directed by Christopher Guest, 84 min., rated R

In one of his distinctive mock-documentaries, Christopher Guest directed and co-stars with an ensemble cast (Eugene Levy, Catharine O'Hara, Parker Posey, Fred Willard) in a parody of small-town life centered on a community theater production.

**AUGUST 12, 13 @ 7:30p**

**AUGUST 14 @ 2:00p**

### Singin' in the Rain

(U.S., 1952) Directed by Stanley Donen and Gene Kelly, 103 min., rated G

A popular silent film star, Don Lockwood, and his leading lady, Lina Lamont, must adapt to the sudden transition to sound pictures. Don, best pal Cosmo Brown, and aspiring actress-singer Kathy Selden join forces to save Don's latest picture—and his career.

**AUGUST 19, 20 @ 7:30p**

**AUGUST 21 @ 2:00p**

### The Swimmer

(U.S., 1968) Directed by Frank Perry, 95 min., rated PG

Bert Lancaster plays the title role in an adaptation of John Cheever's short story of suburban alienation. A middle-aged ad man travels a revelatory journey home by hopping from swimming pool to swimming pool.

**AUGUST 26, 27 @ 7:30p**

**AUGUST 28 @ 2:00p**

### Amélie

(France, 2001) Directed by Jean-Pierre Jeunet, 122 min., subtitled, rated R

This romantic comedy stars Audrey Tautou as a shy waitress who decides to better the lives of those around her, even as she struggles with her own isolation.



# 2022-23 Film Society SNEAK PREVIEW

- Announcements of upcoming titles
- Movie trailers
- Early enrollment in Film Society

**Free admission to preview**

RSVP by August 26 to Valarie Bailie at 810.234.1695 or vbailie@flintarts.org.

**August 30**  
**5:30p-6:30p**

FIA Theater

The Film Society is open for all to join. Levels range from \$100 to \$2,500 with many great benefits!

For details of levels and benefits, visit flintarts.org.

The Friends of Modern Art (FOMA) film series is made possible through support from membership in the FIA Film Society, beginning its eighth year. We invite you to support our great 2022-23 film series by joining today.

**\$100 Ticketholder Basic Benefits**

- 36 transferable tickets good for any screening during the membership year (excludes special series films)

**\$500 Supporting Player & \$1,000 Leading Actor/Actress Benefits**

- Basic benefits
- Recognition in FIA Magazine, FIA annual report, and film pre-screenings
- A generous tax deduction

**\$2,500 Screenwriter Benefits**

- Basic benefits and above
- Listing on film posters
- Logo and link on FIA website
- 72 transferable tickets

For more information, contact the Membership office at 810.234.1695 or vbailie@flintarts.org.

## Film Society Membership Form

☐ **\$100** Ticketholder

☐ **\$1,000** Leading Actor/Actress

☐ **\$500** Supporting Player

☐ **\$2,500** Screenwriter

**Total Amount Enclosed \$** \_\_\_\_\_

**2 Payment Plan Option**

\$ \_\_\_\_\_ by 12/31/22    \$ \_\_\_\_\_ by 5/31/23

Exact name of the individual/company/foundation to appear on all recognition and donor listings:

\_\_\_\_\_

\_\_\_\_\_

**Contact Information**

Name \_\_\_\_\_

Address \_\_\_\_\_

City \_\_\_\_\_ State \_\_\_\_\_ Zip \_\_\_\_\_

Phone \_\_\_\_\_ Email \_\_\_\_\_

**Method of Payment**

☐ Check payable to "FIA Film Society"

☐ VISA   ☐ MasterCard   ☐ Discover   ☐ AMEX

Account # \_\_\_\_\_ Exp. Date \_\_\_\_\_

Signature \_\_\_\_\_

**Please return** this form by 11/1/22 to:

Flint Institute of Arts  
FIA Film Society  
1120 E. Kearsley St  
Flint MI 48503

CHILDREN

Elements and Principles of Design

Ages 9-12

This course will introduce the elements and principles of design to beginner and intermediate artists. Concepts will be explored through drawing, painting, sculpture, and collage. Class meets twice per week.

6/21-7/21 (TU & TH) 10a-12p  
No class 7/5 & 7/7  
Tuition: \$194\*



The FIA Art School is dedicated to the enrichment of the community through individual academic exposure to the visual arts. Highly qualified faculty offer instruction in drawing, painting, glass arts, weaving, photography, animation, ceramics, sculpture, college portfolio development, and early childhood art courses. Since 1928, the Art School has helped students develop a wide range of artistic goals and skill levels.

The Art School's Summer session runs June 6 through August 14. The catalog is available online at flintarts.org/learn/news. Visit our website, call 810.237.7315, or email arted@flintarts.org for more information.

*\*FIA members receive 20% off tuition*

TEENS

Theatrical Make-Up

Ages 13-17



Learn traditional theatrical make-up techniques including skeletal, old age, fantasy, and gore. This is a great start for students interested in exploring Halloween make-up or expanding your skills. Apply make-up on your own face with professional make-up kits that are provided.

6/14-8/9 (TU) 4p-6p  
No class 7/12  
Tuition: \$194\*

Studio Parties

Art School Studio Parties are a great way for you and your friends to try something new in a fun, social environment. Many different media and projects are available including welding, glassblowing, ceramics, painting, drawing, and more. Prices begin at \$35 per person and include a three-hour studio session with one of our teaching artists and all required materials.





## ADULTS

Intro to  
Borosilicate  
Flameworking

Beginner/Intermediate

Learn the basics of creating objects by melting glass rods over tabletop torches. Fundamental techniques are covered and projects include a colorful implosion marble. **Teens 15+ welcome.**

6/6-7/18 (MO) 1:30p-4:30p  
Tuition: \$273\*

Karyn Konkell  
FacultyBeginning  
Pottery

Beginner

Learn the basic skills needed to throw clay on the pottery wheel. Fundamental techniques are demonstrated and practiced as we develop toward more advanced methods.

6/6-7/25 (MO) 5:30p-8:30p  
No class 7/4  
Tuition \$210\*  
6/9-7/21 (TU) 9:30p-1:30p  
Tuition \$280\*

Three-Day Workshop  
Hands-On  
Animation

Beginner/Intermediate/Advanced

This is an intensive hands-on introduction to animation from the artist's perspective. Find your own voice through the discipline of animation as a materials-based medium for self-expression. **Teens welcome.**

6/10-6/12 (FR-SU) 10a-5p  
Tuition: \$189\*

## Intro to Painting

Beginner/Intermediate/Advanced

This is a beginning course designed to offer students a rewarding experience by becoming thoroughly acquainted with the materials, techniques and method of painting. Using your choice of oils or acrylics, explore the genre of the still life, landscape, and portraiture. This class is great for those completely new to painting, but also an opportunity for more experienced painters to revisit some of the discipline's fundamentals. **Teens welcome.**

6/23-8/11 (TH) 10a-2p  
No class 7/7  
Tuition: \$255\*

Paul Erlandson, Student

## Jason Christian

Christian's work combines the craft of *reticello* with classical Venetian techniques and modern simplicity. He has developed a series inspired by the works of Fabergé that combines the delicate complexity of *reticello* with the intimate detail for which Fabergé eggs are known. Christian is an integral member of Dale Chihuly's boathouse team, collaborating with international artists, including Pino Signoretto. He has worked with many well-known glass artists including Lino Tagliapietra, Martin



Blank, Preston Singletary, James Mongrain, and Nancy Callan. Christian has also taught at Pilchuck Glass School in Stanwood, Wash., at Urban Glass in New York City, and at the University of Texas, Arlington.

**\*FIA members  
receive 20% off  
tuition**

## Matt Eskuche



Matt Eskuche began flame-working in 1998 and studied with Emilio Santini and Cesare Toffolo. He exhibits with Habatat Galleries Chicago and Sandra Ainsley Gallery in Toronto. His work has been published in *New Glass Review* (Volumes 25 and 29), *Glass Quarterly*, *American Craft*, *The Flow*, and *Glassline*. Eskuche's work has been acquired by many museums, including the Philadelphia Museum of Art and the Museum of Arts and Design.



## Four-Day Workshop

Vessels and  
Sculpture: Hot  
Glass

Intermediate/Advanced

Add to your toolbox of hot glass surface and design tricks with applications in vessel and sculptural work. Focus on traditional and non-conventional patterned techniques with an emphasis on cane work and its ability to add further expression and dimension to blown glass. Demonstrations include reticello, filigree, and incalmo techniques. Explore ways to apply these patterns to a wide variety of forms.

7/26-7/29 (TU/FR) 9a-8p  
Tuition: \$520\*

## Four-Day Workshop

## Flameworking

Intermediate/Advanced

Intermediate and advanced flameworkers learn techniques based in European flameworking traditions using borosilicate glass. Demonstrations focus on finely shaping small and medium scale blown forms using clear tube before adding color rod and tube. Enjoy plenty of torch time to practice during this intensive workshop.

8/2-8/5 (TU/FR) 9a-8p  
Tuition: \$520\*



## Armin Mersmann

Armin Mersmann is mainly known for his intense naturalistic graphite drawings. He has exhibited widely with dozens of solo and major group exhibitions across the United States. He has taught drawing, the Creative Process, iPhoneography, and Advanced Critique at the American Academy of Art, Chicago, IL; the Colorado Academy of Art, Boulder, CO; Northwood University, Midland, MI; and countless workshops throughout the country. His work is included in more than 350 private, corporate, and public collections.



### One-Week Intensive

## Drawing Boot-Camp

#### Intermediate/Advanced

Immerse yourself into a week-long study of drawing with graphite and the art of observation. Learn the difference between observational realism and intellectual realism by drawing what you see—not what you think you see. Some of the topics include contour drawing, full-value rendering, negative/positive space, sight measuring (sighting) and the often-misunderstood grid system.

8/8-8/12 (MO-FR) 10a-4p  
Tuition: \$300\*

**\*FIA members  
receive 20% off  
tuition**

## Free Glassblowing Demonstrations

Join us every Saturday and Sunday for free glassblowing demonstrations thanks to McLaren Health Care. Demonstrations are held in the Art School's state-of-the-art hot shop and begin on the hour 11a-4p on Saturdays and are ongoing 1p-4p on Sundays.



Glassblowing  
Demonstrations  
are free thanks to

**McLaren**  
HEALTH CARE

11:00a-11:45a • Studio 1 • Free of charge

May 6

## Exploring Flowers

Enjoy listening to the story *Planting a Rainbow* by Lois Ehlert, look for flowers in artworks in the galleries and investigate flowers in the studio and use them to make art.



June 3

## Exploring Light and Shadow

Let's explore light and shadow! Listen to the story *I See a Shadow* by Laura Breen, look at an artwork that uses shadow in the gallery and make some shadows of your own in the studio.



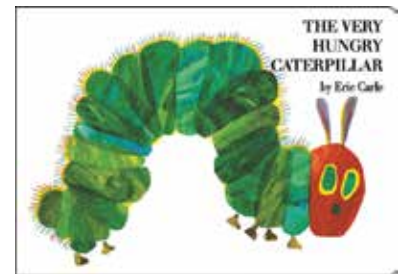
## PRESCHOOL PLAYDATES

11:00a-11:45a • Studio 1 • Free of charge

May 20

## Beautiful Butterflies

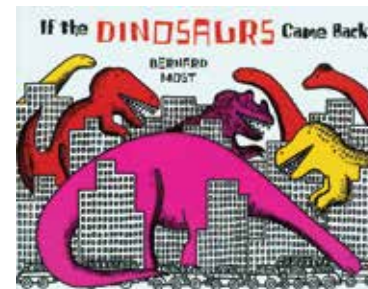
Listen to the story *The Very Hungry Caterpillar* by Eric Carle, look for things from the story in artworks in the galleries and create a collage in the studio.



June 17

## Dinosaur Days

Listen to the story *If the Dinosaurs Came Back* by Bernard Most, go on a walk through the museum and imagine what would happen if dinosaurs were in the galleries, and create a dinosaur artwork in the studio.



**For additional  
information on  
Education programming,  
contact the Education  
Department at  
810.237.7314 or  
education@flintarts.org.**



Art à la Carte is a series of informative programs focusing on the arts. It is offered **free of charge** on Wednesdays at 12:15p. Participants are encouraged to bring lunch or pick up something from The Palette Café. Coffee, tea, and cookies are provided. All programs are held in the FIA's Isabel Hall unless otherwise noted.

May/June Art à la Carte Sponsors

Merkley-Elderly Charitable Trust



July/August Art à la Carte Sponsor

Jim Chintyan

May 4

### Loving Vincent

A young man comes to the last hometown of painter Vincent van Gogh to deliver the troubled artist's final letter and ends up investigating his final days. 95 min.



May 11

### Cleopatra's Lost Tomb

Join Dr. Kathleen Martinez as she searches for Cleopatra's lost tomb. 60 min.

May 18

### Animal Mummies

It wasn't just their pharaohs that the ancient Egyptians bundled up for the next world. 54 min.

May 25

### Scanning the Pyramids

ScanPyramids research team, using cutting-edge, non-invasive technology, discovered several new cavities within the Great Pyramid. 60 min.

June 1

### Sketches of Frank Gehry

This program chronicles the friendship between director Sydney Pollock and architect Frank Gehry. 84 min.

June 8

### How Much Does Your Building Weigh Mr. Foster?

This program focuses on Norman Foster and his unending quest to improve the quality of life through design. 78 min

June 15

### First Person Singular: I.M. Pei

Architect I.M. Pei leads viewers through some of his more famous creations. 85 min.

June 22

### Philip Johnson: Diary of an Eccentric Architect

Philip Johnson's property in New Canaan, Connecticut, is a kind of laboratory where Johnson was his own best client. 55 min.

June 29

### Cool Spaces: Art Spaces

Stephen Chung deconstructs the world of architecture and explains what makes art spaces so cool. 60 min.

July 6

### 19th Century Art

This program starts with Goya's "pinturas negras" and ends with the light-flooded paintings of the Impressionists. 55 min.

July 13

### Manet: Le Déjeuner Sur L'Herbe

The full story of the painting that many believe is the beginning of modern art is revealed. 60 min.

July 20

### Renoir: Dance at the Moulin de la Galette

Beneath Renoir's joyful portrayal of working class Parisians at leisure is another, darker story. 60 min.

July 27

### Degas: Little Dancer Age 14

This program reveals the story of the real woman who Degas used as a model and includes revelations about how the statue was actually made. 60 min



August 3

### Rembrandt van Rijn: The Night Watch

Why should a painting of a group of part-time Amsterdam militiamen, dressed up for an occasion that wasn't serious anyway, have become the most revered painting in Holland? 50 min.

August 10

### Johannes Vermeer: The Art of Painting

Of all Vermeer's paintings, it was probably this picture that he held in greatest esteem. 50 min.

August 17

### Diego Velazquez: The Rokeby Venus

Velazquez's portrait of a young woman lying naked on a couch, gazing at her reflection in a mirror held by Cupid, has an extraordinary story. 50 min.

August 24

### Francisco Goya: The Third of May 1808

This masterpiece by Goya is arguably the most powerful painting about war ever achieved. 50 min.

August 31

### Eugene Delacroix: Liberty Leading the People

This great revolutionary masterpiece was painted by a man who soon complained that revolutions got in the way of dinner parties. 50 min.

FIA book discussions focus on works of fiction and non-fiction related to art, art museums, or FIA collections. The first meeting for each book sets the stage by exploring artists and artwork related to the selected book. Two weeks later, the book is discussed.

## Cat is Art Spelled Wrong

By Caroline Casey, Chris Fischbach, and Sarah Schultz

Part 1:  
Art History  
Presentation  
May 11  
1:30p

Part 2:  
Book  
Discussion  
May 25  
1:30p

Isabel Hall

Free of charge

Are cat videos art? This essay collection, funded by a Kickstarter

campaign, addresses not just our fascination with cat videos, but also how we decide what is good or bad art, or art at all; how taste develops, how that can change, and why we love or hate something. It's about people and technology and just what it is about cats that makes them the internet's cutest despots.



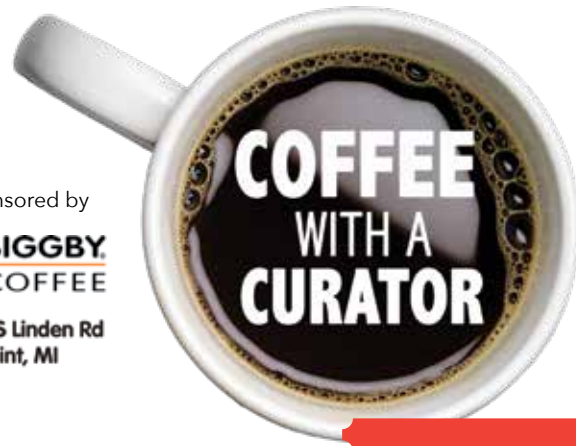
Book is available in the Museum Shop

For additional information on Education programming, contact the Education Department at 810.237.7314 or [education@flintarts.org](mailto:education@flintarts.org).



Coffee with a Curator is a focused, theme-oriented presentation on a variety of topics related to the FIA's permanent collection and special exhibitions. The talk is presented by one of the FIA's curators or an invited speaker. Coffee will be served. Time will follow each talk for questions or gallery exploration. This series will resume in September.

Sponsored by  
**BIGGBY**  
 COFFEE  
 3093 S Linden Rd  
 Flint, MI



Complimentary  
Admission

Joseph Drapell  
 Canadian, born Czech Republic, 1940  
*Gates of Life*, 1998  
 Acrylic on canvas  
 84 x 95 inches  
 Gift of Anne Low, 2008.355



May 9

10:30a-11:30a  
 Isabel Hall

### Why Some People Hate Abstract Art

In this talk, Executive Director John B. Henry contemplates why some people have a strong aversion to abstract art and suggests ways to overcome these initial negative reactions. By exploring the historical, cultural, and philosophical changes in the late 19th and early 20th centuries that allowed for the emergence of the purely abstract image, he aims to demystify abstraction and make it more enjoyable for all.



Chinese  
*Peacock-Handled Flask*, 1734  
 Porcelain with clair de lune glaze  
 9 x 9 1/4 x 5 inches  
 Gift of Mrs. Thelma C. Foy, 2005.99

June 13

10:30a-11:30a  
 Isabel Hall

### The Emperor's Flask

What does a Chinese Emperor, the belief in the power of jade, and a New York City socialite have to do with this 18th-century porcelain flask in the FIA collection? This talk by Tracee Glab, Curator of Collections and Exhibitions, will explore the myriad connections that one object can have with people, places, and history.

## Our "Tryst with Destiny": Love, Loss, and Liberation in Indian Art

May 18 • 6:00p • FIA Theater

Dr. Siddhartha Shah, Guest Lecturer

Dr. Siddhartha V. Shah leads us along the serpentine arc of Indian art history, building connections between the distant and more recent pasts to explore what they reveal about the present state and undetermined future of Indian art.

Dr. Shah has a PhD in art history from Columbia University and is the Director of Education and Civic Engagement, and Curator of South Asian Art, at the Peabody Essex Museum in Salem, Massachusetts, which is home to the largest and most important collection of modern Indian art outside the subcontinent.

*The Kommareddi Family Lecture Series will focus on topics related to the art, history, and culture of South Asia. Sponsored by Jayashree and Dr. Prasad Kommareddi.*

Complimentary  
Admission



Dr. Siddhartha Shah



Rekha Rodwittiya, *The Shedding of Innocence*, 1993; Oil on canvas. Gift of the Chester and Davida Herwitz Collection, 2001. E301019.

## A Berry Special Summer!

We can't think of anything more Michigan than berry picking this summer. The Palette Café will showcase some delightfully sweet and savory specials featuring the freshest berries we can find every week. Try one or all of them. On the run? Start your engine with our house baked blueberry or triple berry muffins to go with your favorite Iced Illy coffee drink. In a pinch? Call ahead for pickup at 810.249.0593.

FIA members receive 10% off.

**Hours:** Mon-Fri, 9a-5p\*;  
 Sat, 10a-5p\*; Sun, 1p-5p  
 \* The Palette Café is open extended hours for select special events.

**PALETTE**  
 Café





Simon Vouet, French, 1590-1649, *Manufactory of Raphael de la Planche* French, active 1629-1661, *Armida, the Sorceress, Calls Upon the Powers of Magic to Avenge Her Loss*, ca. 1633-1637, Wool and silk (modern cotton lining), 181 x 92 inches. Gift of Viola E. Bray, 2005.124.8.

## Real Book of Magic

June 15 & 22 • 6:00p • FIA Theater

Dr. Justin Sledge, *Guest Lecturer*

The book of magic, filled with strange symbols and incantations, has become a core symbol in the history and folklore of sorcery. These volumes haunt the imagination of art, literature, film, and gaming—but what do we actually know about the real, historical books of magic? In this two-part lecture, Dr. Sledge will trace the history of the magical book.

Dr. Sledge earned his undergraduate degree at Millsaps College then went for a DRS in religious studies (Western Esotericism and Related Currents) at the Universiteit van Amsterdam and a MA and PhD in philosophy at the University of Memphis. He is currently a part-time professor of philosophy and religion at several institutions in the Metro-Detroit area and a popular local educator.



Dr. Justin Sledge



Complimentary Admission

The Sheppy Dog Fund Lecture has been established to address the topics of art, religion, and history, and is funded by The Sheppy Dog Fund, Dr. Alan Klein, Advisor.

## Beautiful Death

July 20 • 6:00p • FIA Theater

Tracee Glab, *Guest Lecturer*

Looking closely at works in the FIA's European and American collections, this talk will explore how death is depicted, contemplated, and memorialized in art. From sacred to secular works—objects made for an altar to personal portraits of loss—artists have interpreted the inevitability of death in ways beautiful, mysterious, and sublime.

Tracee Glab is the Curator of Collections and Exhibitions at the Flint Institute of Arts. She has her MA in Art History from Wayne State University and BA in Art History from University of Michigan-Dearborn. Prior to her position in Flint, she worked for 10 years at the Detroit Institute of Arts, editing several collection and exhibition catalogues, as well as serving as the editor of the museum's scholarly journal.



Tracee Glab



Francisco de Goya y Lucientes, Spanish, 1746-1828, *The Death of Saint Joseph*, 1787, Oil on canvas, 21<sup>7</sup>/<sub>16</sub> x 16<sup>3</sup>/<sub>16</sub> inches. Gift of Mr. and Mrs. William L. Richards through the Viola E. Bray Charitable Trust, 1967.19.

THE  
CON-  
TEMPO-  
RARIES  
FLINT INSTITUTE OF ARTS

## Kentucky Derby Affair

MAY 7 5P-8P

Wear your hats, grab your bow ties, and make a run for the roses. Enjoy the race, food, music, and a silent auction with items from Neiman Marcus, Pure Bliss, Gaines Jewelry, Top Golf, NCG Cinemas, and more!

Free to Members of The Contemporaries  
\$75 Non-members (per person)

For tickets and information,  
visit [flintarts.org](http://flintarts.org) or call 810.234.1695



### JOIN The Contemporaries

The Contemporaries is an affiliate group of the Flint Institute of Arts that has access to the FIA through special events, tours, workshops, and networking with other young professionals. Join now to attend The Kentucky Derby Affair on May 7, 2022, and other great events.

Membership for one person is \$50 and two people are \$75. You must be an FIA member at the Individual level (\$30) or higher. For more information, speak with a Visitor Services Representative or go to [flintarts.org](http://flintarts.org).

Sponsor of  
The Contemporaries





# THE PARTY

Presented by

*Shea*  
Automotive Group

FLINT INSTITUTE OF ARTS

## A VINTAGE CIRCUS

**JUNE 4 7P-12A**

**Advance Ticket \$130**  
**At the Door \$150**

Tickets available online at [flintarts.org](http://flintarts.org), by phone at 810.234.1695, or in person at the FIA

Come one, come all to the greatest party of the year! Expect the unexpected in theme and food. Step right up and enjoy a signature cocktail and unique photo opportunities. Marvel at the extraordinary entertainment and dance the night away.

Valet available at the Kearsley St. entrance

Funds raised support museum programming and outreach programs for PreK-12 students


 A vintage circus-themed poster for 'THE PARTY: A VINTAGE CIRCUS'. The design features a central shield-shaped frame with the title 'A VINTAGE CIRCUS' in a stylized, ornate font. Above the frame, the word 'THE PARTY' is written in large, bold, red letters. Below the frame, two acrobats in colorful costumes are shown in mid-air, performing a handstand. A red banner with the date and time 'JUNE 4 7P-12A' is positioned below the acrobats. At the bottom, there are illustrations of three red and white striped circus tents. The entire poster is decorated with numerous stars of various sizes and colors.

# FIFTY-FIFTH ANNUAL FLINTART FAIR

FRIENDS OF MODERN ART


 An abstract sculpture made of thick, flowing, pinkish-purple ribbons or fabric, creating a complex, organic shape. The sculpture is set against a dark background.
 

## JUNE 11 & 12 | 2022

SATURDAY 10am-6pm  
SUNDAY, 11am-5pm

**FOMA** **FLINT INSTITUTE OF ARTS** **flintartfair.org**

FLINT INSTITUTE OF ARTS | 810-234-1695  
1120 E. KEARSLEY ST. | FLINT, MI 48503



FLINT INSTITUTE OF MUSIC



# LATE NIGHT

**FRIDAYS  
JULY-AUGUST**  
ON THE PALETTE CAFÉ PATIO  
**5p-8p**

AT THE FLINT INSTITUTE OF ARTS  
1120 E KEARSLEY ST, FLINT • 810.234.1695 • FLINTARTS.ORG



In partnership with the FIM's Music Around Town Series, Late Night at the FIA is back every Friday in July and August with live music, food, and drink specials. Go to FlintArts.org or Facebook to view the schedule of different performers once released. There's something for everyone! Music begins at 6:00p.

**FREE COVER CHARGE**



This program and/or service is funded in whole or in part by the Genesee County Arts Education and Cultural Enrichment Millage funds. Your tax dollars are at work.



FOLLOW US FOR DETAILS  
facebook

MAY

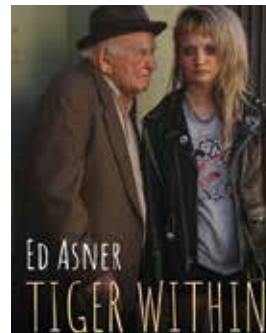


**1 SUN**

7:00p  
**Jewish Film Festival**  
*Fiddler's Journey to the Big Screen*

**2 MON**

7:00p  
**Jewish Film Festival**  
*Tiger Within*



**3 TUE**

7:00p  
**Jewish Film Festival**  
*Image of Victory*

**4 WED**

12:15p  
**Art à la Carte**  
*Loving Vincent*  
7:00p  
**Jewish Film Festival**  
*Neighbors*

**5 THU**

7:00p  
**Jewish Film Festival**  
*Greener Pastures*

**6 FRI**

7:30p  
**FOMA Film**  
*Hive*

**7 SAT**

5:00p  
**Event**  
*Kentucky Derby Affair*  
7:30p  
**FOMA Film**  
*Hive*

**8 SUN**

2:00p  
**FOMA Film**  
*Hive*

**9 MON**

10:30a  
**Coffee with a Curator**  
*Why Some People Hate Abstract Art*

**11 WED**

12:15p  
**Art à la Carte**  
*Cleopatra's Lost Tomb*  
1:30p  
**Book Discussion: Part One**  
*Cat is Art Spelled Wrong*

**13 Fri**

6:00p  
**Members Preview**  
*Being Human: Contemporary Art from the Rubell Museum*  
7:30p  
**FOMA Film**  
*Licorice Pizza*

**14 SAT**

10:00a  
**Exhibition Opening**  
*Being Human: Contemporary Art from the Rubell Museum*  
7:30p  
**FOMA Film**  
*Licorice Pizza*



**15 SUN**

2:00p  
**FOMA Film**  
*Licorice Pizza*

**18 WED**

12:15p  
**Art à la Carte**  
*Animal Mummies*  
6:00p  
**Kommareddi Family Lecture Series**  
*Our 'Tryst with Destiny': Love, Loss, and Liberation in Indian Art*

**20 Fri**

7:30p  
**FOMA Film**  
*Identifying Features*

**21 SAT**

7:30p  
**FOMA Film**  
*Identifying Features*

**22 SUN**

2:00p  
**FOMA Film**  
*Identifying Features*

**25 WED**

12:15p  
**Art à la Carte**  
*Scanning the Pyramids*  
1:30p  
**Book Discussion: Part Two**  
*Cat is Art Spelled Wrong*



**30 MON**

Closed  
**Holiday**  
*Memorial Day*





**1 WED**

12:15p  
**Art à la Carte**  
*Sketches of Frank Gehry*

**2 THU**

7:30p  
**Summer Film Series**  
*Top Hat*

**3 FRI**

7:30p  
**Summer Film Series**  
*Top Ha*

**4 SAT**

7:00p  
**Event**  
*The PARTY*

**5 SUN**

2:00p  
**Summer Film Series**  
*Top Hat*

**8 WED**

12:15p  
**Art à la Carte**  
*How Much Does Your Building Weigh Mr. Foster?*

**10 FRI**

7:30p  
**Summer Film Series**  
*Eat Drink Man Woman*

**11 SAT**

10:00a  
**FOMA Event**  
*Flint Art Fair*  
7:30p  
**Summer Film Series**  
*Eat Drink Man Woman*

**12 SUN**

11:00a  
**FOMA Event**  
*Flint Art Fair*  
2:00p  
**Summer Film Series**  
*Eat Drink Man Woman*

**13 MON**

10:30a  
**Coffee with a Curator**  
*The Emperor's Flask*

**15 WED**

12:15p  
**Art à la Carte**  
*First Person Singular: I.M. Pei*  
6:00p  
**The Sheppy Dog Fund Lecture: Part One**  
*Real Books of Magic*

**17 FRI**

7:30p  
**Summer Film Series**  
*Annie Hall*

**18 SAT**

7:30p  
**Summer Film Series**  
*Annie Hall*

**19 SUN**

2:00p  
**Summer Film Series**  
*Annie Hall*

**22 WED**

12:15p  
**Art à la Carte**  
*Philip Johnson: Diary of an Eccentric Architect*  
6:00p  
**The Sheppy Dog Fund Lecture: Part Two**  
*Real Books of Magic*

**24 FRI**

7:30p  
**Summer Film Series**  
*Out of the Past*

**25 SAT**

7:30p  
**Summer Film Series**  
*Out of the Past*

**26 SUN**

2:00p  
**Summer Film Series**  
*Out of the Past*

**29 WED**

12:15p  
**Art à la Carte**  
*Cool Spaces: Art Spaces*

**1 Fri**

5:00p  
**Extended Hours**  
*Late Night Fridays*

**4 MON**

**Closed Holiday**  
4th of July

**6 WED**

12:15p  
**Art à la Carte**  
*19th Century Art*

**8 Fri**

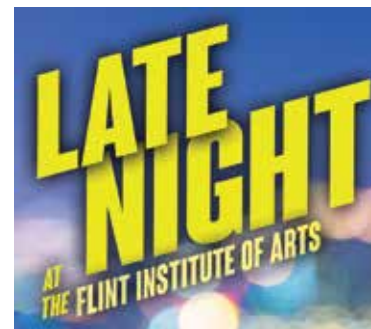
5:00p  
**Extended Hours**  
*Late Night Fridays*  
7:30p  
**Summer Film Series**  
*12 Angry Men*

**9 SAT**

7:30p  
**Summer Film Series**  
*12 Angry Men*

**10 SUN**

2:00p  
**Summer Film Series**  
*12 Angry Men*

**13 WED**

12:15p  
**Art à la Carte**  
*Manet: Le Déjeuner Sur L'Herbe*

**15 Fri**

5:00p  
**Extended Hours**  
*Late Night Fridays*  
7:30p  
**Summer Film Series**  
*The Magnificent Ambersons*

**16 SAT**

7:30p  
**Summer Film Series**  
*The Magnificent Ambersons*

**17 SUN**

2:00p  
**Summer Film Series**  
*The Magnificent Ambersons*

**20 WED**

12:15p  
**Art à la Carte**  
*Renoir: Dance at the Moulin de la Galette*  
6:00p  
**The Sheppy Dog Fund Lecture**  
*Beautiful Death*

**22 Fri**

5:00p  
**Extended Hours**  
*Late Night Fridays*  
7:30p  
**Summer Film Series**  
*Rashomon*

**23 SAT**

7:30p  
**Summer Film Series**  
*Rashomon*

**24 SUN**

2:00p  
**Summer Film Series**  
*Rashomon*

**27 WED**

12:15p  
**Art à la Carte**  
*Degas: Little Dancer Age 14*

**29 Fri**

5:00p  
**Extended Hours**  
*Late Night Friday*  
7:30p  
**Summer Film Series**  
*Vertigo*

**30 SAT**

7:30p  
**Summer Film Series**  
*Vertigo*

**31 SUN**

2:00p  
**Summer Film Series**  
*Vertigo*



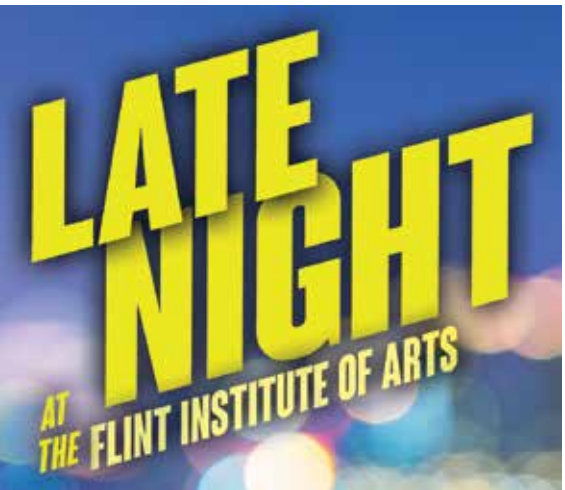
**3 WED**  
12:15p  
**Art à la Carte**  
Rembrandt van Rijn:  
*The Night Watch*

**5 Fri**  
5:00p  
**Extended Hours**  
*Late Night Fridays*  
7:30p  
**Summer Film Series**  
*Waiting for Guffman*



**6 SAT**  
10:00a  
**Exhibition Opening**  
*Walk on the Wild Side: Animals and Other Creatures*  
7:30p  
**Summer Film Series**  
*Waiting for Guffman*

**7 SUN**  
2:00p  
**Summer Film Series**  
*Waiting for Guffman*



**10 WED**  
12:15p  
**Art à la Carte**  
Johannes Vermeer:  
*The Art of Painting*

**12 Fri**  
5:00p  
**Extended Hours**  
*Late Night Friday*  
7:30p  
**Summer Film Series**  
*Singin' in the Rain*



**13 SAT**  
7:30p  
**Summer Film Series**  
*Singin' in the Rain*

**14 SUN**  
2:00p  
**Summer Film Series**  
*Singin' in the Rain*

**17 WED**  
12:15p  
**Art à la Carte**  
Diego Velazquez: *The Rokeby Venus*

**19 Fri**  
5:00p  
**Extended Hours**  
*Late Night Fridays*  
7:30p  
**Summer Film Series**  
*The Swimmer*

**20 SAT**  
7:30p  
**Summer Film Series**  
*The Swimmer*

**21 SUN**  
2:00p  
**Summer Film Series**  
*The Swimmer*

**24 WED**  
12:15p  
**Art à la Carte**  
Francisco Goya: *The Third of May 1808*

**26 Fri**  
5:00p  
**Extended Hours**  
*Late Night Fridays*  
7:30p  
**Summer Film Series**  
*Amélie*

**27 SAT**  
7:30p  
**Summer Film Series**  
*Amélie*



**28 SUN**  
2:00p  
**Summer Film Series**  
*Amélie*

**30 TUE**  
5:30p  
**Film Society**  
*Sneak Preview*



**31 WED**  
12:15p  
**Art à la Carte**  
Eugene Delacroix:  
*Liberty Leading the People*

Chakaia Booker



Chakaia Booker  
American, born 1953  
*Untitled (CB.1.21)*, 2021  
Lithograph and chine collé  
on embossed paper  
21 x 14 inches



Each year, the Flint Print Club commissions an artist to produce a print to augment both the FIA's collection and the pursuit of personal collecting. The club is limited to 100 members in good standing at the Family level or above. Flint Print Club dues are \$250 annually, which provides each participating member with a selected print and related programs. The club currently reaches members in 16 states across the country and arrangements can be made to ship the print to any of the 50 states.

Chakaia Booker is the artist of the 2020-21 commissioned print. Residing in New York, Booker is an internationally renowned and widely collected American sculptor known for her large-scale works made from discarded tires, which are cut, looped, layered, and reassembled. She has exhibited in over 150 solo and group exhibitions across the United States, Europe, Africa, and Asia and is included in more than 40 public collections. She was selected for the 2000 Whitney Biennial and received a Guggenheim Fellowship in 2005.

You can learn more about the artist and her work on her website at [chakaiabooker.com](http://chakaiabooker.com).

Yes, I want to be a member of the Flint Print Club 2020-2021 for the Chakaia Booker print.

Membership Information

Circle: Dr. Mr. Mrs. Ms. Miss

Name \_\_\_\_\_

Address \_\_\_\_\_

City \_\_\_\_\_ State \_\_\_\_\_ Zip \_\_\_\_\_

Phone \_\_\_\_\_ Email \_\_\_\_\_

Methods of Payment

☐ Check payable to  
"Flint Print Club"

☐ Visa ☐ MasterCard ☐ Discover ☐ AMEX

Acct. # \_\_\_\_\_ CV# \_\_\_\_\_

Exp. Date \_\_\_\_\_ Signature \_\_\_\_\_

☐ I am currently an FIA member at the \$50 level or higher (see page 38 for levels).

☐ I would like to upgrade my membership or join the FIA at the \$50 level or higher with an additional:  
\$ \_\_\_\_\_

+ \$250.00 Flint Print Club dues

= \$ \_\_\_\_\_ **Total Payment**



Membership contributions are a significant part of the FIA operating income.

**Benefits and privileges of FIA membership include** a 10% discount in the Museum Shop and The Palette Café; a 20% discount and early registration privileges on Art School classes; discounts on ticketed events; free admission to exhibitions; invitations to opening receptions, lectures, and special events; *FIA Magazine* subscription; recognition in the *FIA Magazine* and Annual Report and inclusion in two reciprocal membership programs for members at the \$100 level and above.

**Rubens Society Members** are individuals and businesses supporting FIA membership at the \$1,500 level and higher and are invited to three exclusive events each year.

Levels

Youth (2.5-12).....	\$20	†	2 adults
Student (13 to college)....	\$20	††	2 adults + children 18 & under
Individual .....	\$30		
Dual <sup>†</sup> .....	\$40		
Family <sup>††</sup> .....	\$50	★	An asterisk indicates the names of those who have upgraded their memberships with a larger contribution.
Sustainer <sup>††</sup> .....	\$100		
Sponsor <sup>††</sup> .....	\$250		
Donor <sup>††</sup> .....	\$500	+	A plus indicates the names of Friends of Modern Art (FOMA) members.
Rubens Society <sup>††</sup> .....	\$1,500+	Δ	A triangle indicates the names of Founders Society members.

Members who have joined from 1.13.22 – 3.9.22

Rubens Society

**Individual**  
(\$1,500 & above annually)  
The Rabiah family

Business Members

**Business Sustainer**  
(\$100 annually)  
Dedicated Believers Ministries  
Edward Jones - Eric Gasper/  
Tyler Boyd  
Health Alliance Plan  
Idealease of Flint, Inc.  
Northgate  
Word of Life Christian Church

Individual Members

**Donor**  
(\$500 annually)  
Mr. Kyle Korth+Δ  
  
**Sustainer**  
(\$100 annually)  
Mr. & Mrs. Michael Cantor  
Mr. & Mrs. Paul Kelley  
Ms. Janice Marko  
Dr. & Mrs. Jim MillerΔ  
Mr. Peter Robinson & Ms. Lisa Kingsley

**Family**  
(\$50 annually)  
Ms. Margaret Adams & Mr. Emanuel Adams  
Ms. Sarah Alguire  
Mr. & Mrs. Miguel Alvarado  
Ms. Mary Andres  
Ms. Toni S. Atwell  
Mrs. Nicole Bacheller  
Mrs. Megan Baize  
Mr. Michael Bakker  
Mrs. Andrea Banks  
Ms. Patty Banner  
Ms. Rhonda Barber  
Mrs. Lisa Barnett  
Mr. & Mrs. David Bassin  
Mrs. Kathryn Benard  
Ms. Barbara Bennett  
Mrs. Elizabeth Berkey  
Mrs. Amy Bieber  
Mrs. Janice Billing  
Mrs. Teresa Blaska  
Mr. Spencer Bodzick  
Mr. & Mrs. Scott Bontekoe  
Mrs. Sarah Bostwick  
Ms. Lisa Boulton  
Mr. Alexander J. Boylan  
Mr. Zachary Bradley  
Mr. & Mrs. Michael Bregand  
Mr. & Mrs. Shaun Brewer  
Mrs. Heather Briggs  
Mr. & Mrs. Derrick Britton  
Mrs. Amber Brown  
Mr. & Ms. Larry Brown  
Mr. Zachary Burhans  
Mrs. Kim Burney  
Mrs. Michelle Callard  
Mrs. Lindsay Carlisle  
Mr. & Mrs. Russell Ciesielski

Mr. & Mrs. Neal Clayton  
Mrs. Anne Coleman  
Mrs. Jennifer Cooke  
Mr. & Mrs. Matt Cornell  
Mrs. Courtney Cox  
Mr. & Mrs. Mike Cox  
Mr. Kevin G. Crimmins  
Ms. Amanda Crowl  
Mrs. Colleen Curtis  
Mr. & Mrs. Kevin Dailey  
Mrs. Renee Dailey  
Mrs. Cindy Day  
Mr. & Mrs. Matthew Day  
Mr. Anthony DeLeon  
Mrs. Beth DeNicolò  
Ms. Lisa Dotson  
Mrs. Brittney Down  
Mrs. Gwen Ducharme  
Mrs. Rebecca Duguid  
Miss Becky Duncan  
Mrs. Deborah Duncan  
Mrs. Erin Dunn  
Mrs. Robyn Durant  
Mr. & Mrs. Daniel Dziduch  
Dr. Catherine Ebert  
Mrs. Kelly Eddy  
Mr. & Mrs. Bradley Emerton  
Mr. John Engel  
Mrs. Liz Fedirko  
Mrs. Christina Fenlon  
Mr. & Mrs. Jared Field  
Mrs. Peg Fiewig  
Mrs. Krysta Flanagan  
Mrs. Kirstyn Flowers  
Mr. Corey Fondaw  
Mr. & Mrs. Michael Ford  
Mr. & Mrs. Ryan Ford  
Mrs. Sarah Foster  
Mr. & Mrs. Bryan Fuller  
Mrs. Heather Fuller  
Mr. Michael Gagne  
Ms. Kelly Garza  
Miss Tina Gates  
Mr. & Mrs. Kevin Gilstad+Δ  
Mrs. Lori Girard  
Mr. Timothy Givens, Sr. & Mrs. Marjai Richmond  
Mrs. Nancy Gladly  
Mr. Craig Golembiewski  
Mrs. Tamara Gorham  
Ms. Anna Goss  
Mrs. Lindsay Grady  
Mrs. Deborah Gragg  
Mrs. Patti Gray  
Ms. Paula Greenwood  
Mrs. Angie Grindel  
Mr. & Mrs. Eduardo Guerra  
Mrs. Kimberly Guest  
Ms. Stacy Hall  
Mrs. Jennifer Hamilton  
Ms. Kissa R. Harden  
Mrs. Tiana Harrington  
Mrs. Kathleen Haycock  
Mrs. Heather Helmus-Nyman  
Mr. & Mrs. Merle Hemmila  
Mrs. Amy Heslip  
Mrs. Erin Hibbs  
Ms. Tanja Hill & Ms. Candid Brandon+  
Mr. & Mrs. Harold Hill  
Miss Kirstin Hodge  
Mrs. Rachael Hodges-Hassell  
Mr. & Mrs. Joe Holt  
Mrs. Bethany Hoover

Mrs. Sheri Hotchkiss  
Ms. Melanie Howard  
Mrs. Deanna Howell  
Mrs. DiAnne Hukill  
Mrs. Alyse Hurn  
Ms. Katrina Ireland-Torrey & Miss Kacy Torrey  
Ms. Deborah Isham  
Mrs. Trudy Iverson  
Mrs. Carin Jackson  
Mrs. Tracey Jambeck  
Mr. Nicholas Jeffrey  
Mrs. Tonia Jennings  
Mrs. Cheryl Jerisk  
Ms. Kelley Jones  
Mr. & Mrs. Andrew Jordan  
Mr. & Mrs. Mike Judson  
Mrs. Susan Kaffenberger  
Mr. & Mrs. Jason Kahn  
Mr. & Mrs. Alex Keesling  
Ms. Mary Anne Kilbourn  
Mr. & Mrs. Richard Kimball  
Ms. Wendy Kirsch  
Mrs. Andi Klott  
Mrs. Bridget C. Koledo  
Ms. Jill Kralik  
Mrs. Linda Kramer  
Mrs. Angie Krueger  
Mr. & Mrs. William Kuhn  
Miss Kari Lafave  
Ms. Kelly Lambert  
Mrs. Annette Laureto  
Mr. & Mrs. Shawn Lawrence  
Mrs. Marie Leadford  
Mr. & Mrs. Mike LeDuc  
Mrs. Laura Lemke  
Ms. Lynette Lillie  
Mr. Scott Lints  
Mrs. Melani Loria  
Mrs. Nicole Lucy  
Mr. Joshua Lunney  
Ms. Ann Majchrowski  
Mr. & Mrs. Andrew Manning  
Ms. Aimee Martin-Kihn  
Mr. Jeffrey Martinez  
Ms. Kristy Marton  
Ms. Kalsie Mathews  
Mrs. Erin Maturen  
Mr. & Mrs. Ken Maunder  
Mrs. Sarah Mawhinney  
Mrs. Denise Maxheimer & Mrs. Amanda Hinesley  
Mr. & Mrs. Gordon McAllister  
Mrs. Heather McDonald  
Mr. & Mrs. Travis McDowell  
Mr. & Mrs. Robert McRae  
Mrs. Skye McWilliams  
Miss Lisa Mehlberg  
Ms. Michelle Meloche  
Mrs. Paula Meredith-Faris  
Ms. Marie Miarka  
Mrs. Christy Miller  
Mr. & Mrs. Shayne Mishler  
Mr. & Mrs. Steve Mitchell  
Mr. & Mrs. Mike Mogford  
Ms. Hattie Molina & Mr. Jacob Williamson  
Mr. & Mrs. Chris Molnar  
Ms. Syreeta Moore  
Mrs. Linda Mora  
Mrs. Emily Mosher  
Mrs. Melissa Mueller  
Mr. Bryan Mulanix  
Ms. Heather Mulligan

Mr. Beau Munsell  
Mrs. Michelle Murphy  
Mr. Jeff Nagy  
Miss Elizabeth Nelson  
Mrs. Tammy Neuville  
Mr. Bryant Nolden & Ms. Jacqueline Edmonds  
Ms. Sarah Norko  
Mr. Nathan Odinga  
Mr. James Olmstead & Ms. Deborah Olomstead  
Mrs. Michele Packard  
Mr. & Mrs. Jeff Park  
Mrs. Jacky Pavkovich  
Mrs. Courtney Payne  
Ms. Julie Peake  
Mrs. Lynn Perrera  
Mr. & Mrs. Eric S. Peterson  
Ms. Michele Pfeiffer  
Ms. Deborah Philippi  
Mrs. Amanda Phillips  
Mr. Timothy W. Phillips  
Mr. & Mrs. Scott Phillpotts  
Mrs. Kelli Pierscinski  
Ms. Michelle Pietraszewicz  
Mrs. Kari Pihlstrom  
Mrs. Gaby Pike  
Ms. Lindsay Pittenger  
Mr. & Mrs. Hurbert L. Pitts  
Ms. Molly Plunkett  
Mrs. Victoria Podulka  
Mr. & Mrs. Greg Potts  
Mrs. Jennifer Prior  
Mrs. Jean Publow  
Mr. & Mrs. Glen Puro  
Ms. Kim Racine-Shadduck  
Mr. Nicholas Ragnone  
Mr. Kevin Ratza  
Mr. & Mrs. James Rice  
Mr. Steve Riselay  
Mrs. Dawn Robb  
Mrs. Allison Roberts  
Ms. Tiffany Robinson  
Ms. Ester Rosario  
Ms. Erin Sage & Mr. Jerin Sage  
Mrs. Karey Sage  
Mrs. Heather Schaefer  
Mr. Dan Schneider  
Ms. Michelle Schneider  
Mr. Brett Seavey & Ms. Elizabeth Seavey  
Mr. Chad Sexton  
Mrs. Karen Shanks  
Mrs. Leslie Sherry  
Mr. & Mrs. Michael Simon  
Ms. Stefanie Simons & Mr. Scott Shook  
Mrs. Megan Skergan  
Mr. Todd Skinner  
Mrs. Sherry Smeltzer  
Mrs. Jill Smigielski  
Mrs. Amy Smith  
Mrs. Elizabeth Smith  
Mrs. Jennifer Smith  
Mr. Kevin Smith  
Mrs. Pamela Smith  
Mr. Ronald C. Smith  
Mr. Scott W. Smith  
Ms. Marcia Snyder  
Mr. & Mrs. Brent St. Clair  
Mr. & Mrs. Jerald C. Staley II  
Mrs. Kimberley Stapp  
Mrs. Kimberly Stark  
Mrs. Carolyn Stickney

Ms. Kasie Stout  
Mr. Mark J. Suchowski  
Mr. Matt Sullivan  
Ms. Denise Swanson  
Mrs. Jennifer Sweigart  
Mrs. Kursty Switzer  
Mr. Matt Szezsodi  
Ms. Cheryl Thomas  
Mrs. Heather Thomas  
Mrs. Jennifer Thomas  
Mrs. Elizabeth Toye  
Mrs. Jane Turner & Mr. Ray Ajemian  
Mrs. Jennie Turner  
Mrs. Mary Kathryn Turner  
Mrs. Lauren Vandeberghe  
Ms. Sarah VanDyke  
Mrs. Marti VanOverbeke  
Ms. Carolyn Vierkorn  
Ms. Linda Vollick  
Ms. Laura Wagonlander  
Mrs. Lisa Wanink  
Mr. & Mrs. David Watson  
Mrs. Katrina Weaver  
Mrs. Kimberly Weingartz  
Mr. & Mrs. Sam Wells  
Mr. Michael Whalen  
Mrs. Hannah Wilcox  
Mrs. Kimberly Wilhite  
Mr. & Mrs. Douglas Wilson  
Ms. Sandy Wizynajtys  
Mrs. Michelle C. Wolfe  
Mr. Brad Wright  
Mr. & Mrs. David Zielinski  
Ms. Sarah Zuker

**Dual**  
(\$40 annually)  
Mr. Lance Ash & Ms. Kimberly Griffin  
Mrs. Kendra Barberena  
Ms. Brenda Dunlop  
Ms. Cheryl Flore  
Ms. Debbie Gilbert  
Ms. Jocelyn Hagerman  
Caden Picard  
Mr. David Tait & Ms. Lynette McLeod

**Individual**  
(\$30 annually)  
Mr. Ronald Beaubien  
Mr. Diego Alonso Virgues  
Ms. Kimberly Badger  
Ms. Danielle Barnett  
Mr. Brendan Beard  
Ms. Jessica Buchanan  
Ms. Mary Ann Catron  
Mr. Randal Chancellor  
Ms. Allison Clemens  
Miss Mariah Dominguez  
Mr. Darrin Fowler  
Ms. Sharlene L. Howe  
Ms. Angela Igrisan  
Mr. Joseph Levels  
Ms. Ashley Makedonsky  
Mr. Don Massara  
Ms. Kiaira May  
Ms. Kathrin Perdue  
Ms. Heather Pierce  
Ms. Deirdre Scott  
Ms. Sheila Serio  
Ms. Barbara Smith  
Mr. Joseph Tokarz  
Ms. Karri Tomich-Baylis

**Student**  
(\$20 annually)  
Miss Zoey Bednarski  
Ms. Sara Blinkenberg  
Ms. Ashley Johnson  
Dr. Kristy Spann  
  
**Youth**  
(\$20 annually)  
Marley Dillon  
Liliana Snyder  
Rocsi Turner  
Chloe VanTine

Members who have renewed from 1.13.22 – 3.9.22

Rubens Society

**Business**  
(\$1,500 & above annually)  
Sorensen Gross Construction Co.

**Individual**  
(\$1,500 & above annually)  
Frederick & Barbara Bellairs  
Ms. Betty Lou Campbell  
Neal & Amanda Hegarty  
Dr. Samasandrapalya Kiran & Dr. Mona Hardas  
Ms. Marissa Pierce  
Mr. William H. Piper  
Ms. Linda L. Pylypiw+Δ  
Mr. & Mrs. Timothy C. Sanford  
Chuck & Kathryn Sharbaugh  
Mr. & Mrs. John P. Siler+Δ  
Dr. & Mrs. Frederick VanDuyn

Business Members

**Business Sustainer**  
(\$100 annually)  
Applebee's Neighborhood Grill & Bar  
Communities First, Inc.  
ELGA Credit Union  
Flint Cultural Center Academy  
Friends of Berston  
Grace Emmanuel Baptist Church  
Hurley Medical Center  
Kettering University  
Lawrence E. Moon Funeral Home  
McFarlan Home  
Mott Community College  
The Serra Foundation  
Valley Area Agency on Aging

Individual Members

**Donor**  
(\$500 annually)  
Jane Bingham\*+Δ  
Ms. Kathleen George\*  
Mr. & Mrs. Jerome D. Winegarden, Jr.+



**Sponsor**  
(\$250 annually)  
Mr. & Ms. Roger H. Brown\*+  
Mr. & Mrs. John B. Hartranft\*+  
Mr. & Mrs. James LayΔ  
Mr. & Mrs. David M. Pettengill\*  
David & Randee Pieper\*+Δ  
Ms. Addie Royston\*  
Drs. Michael & Virginia Rucks  
Dr. & Mrs. Milton J. Siegel  
Mr. & Mrs. David Owen-Smith  
Mr. & Mrs. William Peterson  
Ms. Cynthia Riggs & Mr. Mark Gannon\*  
Dr. & Mrs. Alan Weamer

**Sustainer**  
(\$100 annually)  
Ms. Catherine Anders\*  
Mr. & Mrs. William R. Angus+Δ  
Mr. & Mrs. Robert Atkinson+  
Mr. David Austen & Ms. Sandra Conn  
Ms. Betsy Best & Mr. Kevin Mclearn  
Mr. & Mrs. John C. Briggs+  
Mr. George Brueck & Ms. Barbara Brownlee\*Δ  
Ms. Joy Bublitz\*  
Mr. & Mrs. Michael Chaffee+Δ  
Ms. Jacqueline Childress-Watkins\*  
Mr. & Mrs. Sylvester Collins\*+  
Mr. & Mrs. Craig Coney\*  
Ms. Carol L. Cook  
Mr. & Mrs. Daniel Cruz  
Mr. & Mrs. Robert W. Devereaux  
Mrs. Cheri Dickinson+Δ  
Mrs. Elizabeth Dix  
Mr. & Mrs. Richard H. Ebbott  
Julie & Jim Edwards\*  
Mr. & Mrs. Bennett Engelman+Δ  
Mr. & Mrs. Michael A. Farella+  
Ms. Nora G. Fisher+Δ  
Mr. Robert Gaither, Jr.+  
Mrs. Roslyne Gitlin\*  
Mr. & Mrs. Michael Goetz\*  
Ms. Pamela Goodwin\*+  
Mr. Joseph M. Hamo  
Ms. Louise Hartwell & Ms. Kate Pickett  
Mr. & Mrs. Jack Hempel  
Mr. & Mrs. John Hice\*  
Dr. & Mrs. John V. Hinterman  
Mrs. Mary Jo Hobart-Parks  
Mr. Jeff House & Mr. Jonathan Shettler  
Mr. & Mrs. Earl D. Johnson  
Ms. Wendy Johnson\*  
Dr. & Mrs. Zelton Johnson  
Ms. Elizabeth A. Kaplan & Mr. Rex Donahay  
Mr. & Mrs. Franklin H. Kasle  
Mr. & Mrs. Norman Kleiner+Δ  
Mr. & Mrs. Frederick L. Kump  
Stephen & Kathleen Leist+  
Mr. & Mrs. Carl A. Leser+  
Mr. & Mrs. Kenneth Lindebrekke\*  
Dr. & Mrs. Edward T. Lock  
Mr. & Mrs. Glenn Lysinger  
Ms. Suzanne MacWilliams+  
Mr. Michael Martin & Mr. Bryan Paris\*  
Mr. & Mrs. Jack McCarthy

Mrs. Helen G. Millhouse  
Mr. & Mrs. Robert W. Myers+Δ  
Mr. & Mrs. George Nassif  
Ms. Joyce Nichols\*  
Mr. & Mrs. Frank Ninteman  
Mr. & Mrs. Patrick O'Sullivan  
Judge & Mrs. Robert M. Ransom+  
Richard & Ramona Ranville  
Drs. Venkat & Rama Rao  
Ms. Sharon Rickard & Ms. Kim Laine\*  
Mr. & Mrs. James P. Ricker  
Mr. & Mrs. Allen Salyer+Δ  
Mr. & Mrs. Derald Schnepf  
Dr. Kristy Spann\*  
Ms. Lucinda Stevens & Mr. Carl Goldstein  
Mr. Michael Dingman & Mrs. Susan Sumner Dingman  
Mrs. Mary Sutton  
Ms. Ernelle Taylor+Δ  
Dr. D.J. Trela & Dr. David Bailey+Δ  
Mr. Ted Van Steyn & Dr. Emily Feuerherm  
Ms. Jane C. Wagner  
Mr. & Mrs. Jim Wascha\*  
Ms. Mary E. Whaley & Mr. Rick Kroeger  
Ms. Mary Whitlock

**Family**  
(\$50 annually)  
Mr. Lee Allen & Ms. Jessica Walker  
Drs. Patrick & Theresa Atkinson  
Mr. & Mrs. Pat Bowdish  
Miss Amy E. Burtrum\*  
Mr. David Crawford & Ms. Cynthia Keith  
Mr. & Mrs. Peter Daunt  
Mr. John V. Dempsey & Ms. Margo Lakin  
Dr. & Mrs. Shantaram G. Ekhande  
Mr. & Mrs. Duane Elston  
Mr. & Mrs. Ron Fonger  
Mr. David Davis & Mrs. Lynn Friesen-Davis  
Mr. & Mrs. Jeff Garrett  
Ms. Amy Gottlieb  
Dr. Shamarion Grace  
Mr. John M. Hackett & Ms. Christy A. Walker-Hackett  
Samuel & Graciela Harris  
Ms. Melanie Hemphill-Smith  
Ms. Cheryl Henige & Mr. Rodriguez Nicholas  
Dr. & Mrs. Huseyin R. Hizioglu\*+Δ  
Ms. Lori Horcha  
Mr. & Mrs. Lee Hoyt\*  
Ms. Tracy A. Jennings  
Mrs. Mary Johns & Mr. Mike Riker  
Ms. Joelle Jordan  
Mrs. Susan Karlstrom & Mr. Gunnar Karlstrom  
Mr. & Mrs. Russell Kirksey  
Mr. & Mrs. John Kopec  
Ms. Rosemary A. Kowalske\*  
Reverend James Kummer\*  
Mr. & Mrs. Joe Lajewski  
Mrs. Sandra Law

Ms. Cyndi Lieske  
Linda & Douglas Mark  
Ms. Heather Nassar & Ms. Alexandra Nassar  
Ms. Cynthia Nicholas  
Ms. Jacquie Osborn & Mr. Jim Osborn  
Ms. Tujuana Patton  
Mr. Wayne Pickvet & Mr. Bruce A. Barrett  
Dr. & Mrs. Paul J. Racine  
Mr. & Mrs. David Robertson  
Mr. & Mrs. James Shurter+Δ  
Mr. Scott Siefker  
Ms. Deborah Simms\*  
Mr. & Mrs. Kenneth L. Spurgeon\*  
Mr. & Mrs. Jeff Stanton  
Mr. & Mrs. Paul G. Streby  
Ms. Kira Torrey  
Mr. & Mrs. Bruce Trevithick+  
Mr. & Mrs. Matt Urbanke  
Ms. Michelle Vallée\*  
Mr. & Mrs. Matthew Valley  
Mrs. Christina Vanchina  
Ms. April Vorhees & Mr. Assegid Mersha  
Mr. & Mrs. Shawn White  
Mr. & Mrs. John Wilson  
Mrs. Samantha Woodbeck  
Mr. Dondré D. Young

**Dual**  
(\$40 annually)  
Mr. Richard Barber & Ms. Sharon Baker  
Mr. & Mrs. Sam Barnese  
Mr. & Mrs. Gary Bates  
Dr. Colleen Beach & Mr. John Beach  
Mrs. Kathy Bradley+  
Mr. & Mrs. Kelly J. Brisbin+  
Mr. & Mrs. David Coburn+  
Ms. Debra M. Danko & Mr. Steven M. Durdle  
Ms. Patricia S. Duffy & Mr. Ralph Edwards  
Mr. & Mrs. Dennis Dunlavey  
Mr. & Mrs. William Falkenberg\*  
Mr. Alan J. Ferrari\*  
Mr. Matt Franklin & Mr. Kyle Lynch  
Ms. Mary Lou Gagnon  
Dr. Petros Gheresus & Mrs. Lestine Gheresus  
Mr. & Mrs. Ed Hanley  
Ms. Barbara Holmer & Mr. Robert Stanisch  
Mr. & Mrs. John Howell  
Mr. & Mrs. John Hughes  
Miss Esther M. Jacob\*+Δ  
Mr. Kristopher Johns & Ms. Vanessa Ferguson  
Mr. & Mrs. Paul Jordan  
Mr. & Mrs. Lee LaVictoire+  
Ms. Rebecca Letterman & Ms. Sarah Letterman  
Mr. & Mrs. James A. Loviscek  
Claudia & Richard Mach+  
Mr. & Mrs. Charles Martin+  
Ms. Pamela McBride  
Mr. & Mrs. Brian Renaud  
Mr. John J. Mrozik & Ms. Heather Sisto+

Mr. Kenneth F. Swisher  
Rev. Tom & Mrs. Beth Wachterhauser+  
**Individual**  
(\$30 annually)  
Ms. Lisa Ballard  
Miss Shirley Bannatyne  
Mr. David J. Barkey  
Miss Jeanette Brayan  
Ms. Galina Britton  
Mrs. Rita Brust  
Ms. Robin Chan  
Mrs. JoAnn Christensen  
Ms. Vera L. Crandall  
Ms. Marcie Davidson  
Mr. Ray Davio  
Mrs. Brenda DuPree  
Ms. Shirley L. Eason+Δ  
Ms. Gloria J. Eby-Buck  
Ms. Delphine Frank  
Ms. Amy Freeman+  
Mr. William D. Fuller+Δ  
Ms. Jill Gardner  
Ms. Grace Glass  
Ms. Donna Gohs  
Mrs. Rosalind Grand+Δ  
Ms. Mary L. Grossklaus+  
Ms. Julie A. Hall  
Mrs. Janice M. Hanson+Δ  
Ms. Donna Hewitt+  
Mrs. Lynn Hill-Funk  
Dr. John A. Howland  
Ms. Vickie Jackson  
Ms. Judith Kalter\*  
Mr. Michael Kennard+  
Miss Sheryl Kreiner  
Mr. Miles Lam  
Ms. Teresa A. Littlejohn+Δ  
Ms. Giovannina MaioΔ  
Rev. Steve Makranyi+Δ  
Ms. Karen Malcolm  
Ms. Nicole McAllister  
Mrs. Laura McGuire  
Mr. Cliff Miller  
Ms. Junko Miller+  
Ms. Kathleen Moore  
Mrs. Karan A. Pinkston  
Ms. Heidi Ray  
Ms. Barbara Reehl  
Ms. Jacqueline Scott+Δ  
Ms. Marian D. Seguin  
Ms. Martha Shaver  
Ms. Joan W. Smalley+  
Ms. Susan Sowa  
Ms. Patricia Stark  
Mr. Paul Stirling+  
Mrs. Ellyn Sudow+  
Ms. Alice Tribbs  
Mr. Todd Wiseley  
Ms. Ja-neen Wooten+  
Ms. Susan Wotring

**Student**  
(\$20 annually)  
Miss Sheryl BrownΔ  
**Youth**  
(\$20 annually)  
Avery Bates-Kirby  
Kimberly Bates-Kirby  
Cameron Roeser  
Emerson Roeser  
Parker Roeser

Reciprocal Museums

If you are an FIA member at the Sustainer, Sponsor, Donor, or Rubens Society level, as you plan your road, plane, or day trip, be sure to take your FIA membership card. At these membership levels, your FIA card allows you admission and other benefits to more than 1,100 participating museums in the U.S., Canada, El Salvador, Mexico, and Bermuda. Visit art museums and galleries, historical museums and societies, botanical gardens, children’s museums, zoos and more.

Just present your membership card validated with the gold North American Reciprocal sticker (pictured here) to receive membership privileges. It is recommended that you contact the institution you plan to visit prior to visiting to understand the benefits you will receive to avoid any confusion.

For a full listing of participating museums, visit flintarts.org, select Membership, then



The FIA’s Youth Membership, sponsored by Halo Burger, is a fun way for children ages 2.5 to 12 to learn about art and become inspired to create their own. Youth members are eligible to participate in three free art activities; see the May activity on the right.

For a one-year membership, dues are \$20 for the first child and \$10 for each additional child.



While you travel, be sure to take your FIA Membership Card.

Reciprocal Listing and click on the link. If you do not have access to the Internet, we will mail a list to you.

To upgrade your membership to one of the levels listed above, contact the Membership Coordinator at vbailie@flintarts.org or 810.234.1695. You can also upgrade on our website.

Youth Activity  
May 14  
1:30p-4:00p • Studio 10

Stacked Animals

Drawing inspiration from depictions of animals in the FIA’s collection, youth members will create watercolor paintings depicting humorous stacks of animals, reptiles, and birds. Students will first make their drawings using black ink, then use watercolor to add color and decoration. Members will learn about drawing and painting techniques, composition, and adding humor to art.

This activity is free to youth members. Call 810.237.7315 to RSVP your child today.



The FIA Film Society Legacy Fund

A decade ago, the FIA established the Film Society. Membership in the society not only supports the Film Program, it offers its members reduced film ticket prices, an informative newsletter, pre-screenings, as well as recognition of support.

Recently, one of the founding members of the Society, Flint filmophile Linda Pylypiw, notified the FIA that she was establishing a planned gift from her estate to benefit the program. This discussion has led to the formation of the FIA Film Society Legacy Fund (FSLF). This endowment will help sustain the Film Program in perpetuity. Linda is giving a lead gift to start the fund and, in the future, when her bequest is realized, it will be added to the FSLF.

If you are a member of the Film Society or just love films and want to help ensure that the film program continues, please consider a contribution to the Film Society Legacy Fund. As the FSLF grows, it will yield dollars to sustain the affiliated costs of equipment and theater maintenance, personnel, security, and ensure that the FIA will always be the place to see great classics, foreign, alternative and independent films. Your contribution is 100% tax deductible and will help to preserve the program well into the future.

Yes, I want to donate to the Film Society Legacy Fund.

Contact Information

Circle: Dr. Mr. Mrs. Ms. Miss

Name

Address

City State Zip

Phone

Email

My Donation

Total Amount Enclosed \$

Payment plans are available by contacting Valarie Bailie at vbailie@flintarts.org or 810.234.1695.

Methods of Payment

- Check payable to Flint Institute of Arts
- Visa MasterCard Discover AMEX

Acct. # CV#

Exp. Date Signature



The Flint Institute of Arts gratefully acknowledges the generosity of the following donors who have supported the Institute with contributions.

Gifts received from 1.13.22 - 3.9.22

Annual Appeal 2021 Since 1.13.22 - 3.9.22

Ms. Kamilah Horne  
Donna M. Kraft Charitable Fund  
Mr. Paul Stirling  
Ms. Sheyenne Stowe

The Contemporaries Since 1.13.22 - 3.9.22

Mr. Matt Franklin  
Mr. Kristopher Johns & Ms. Vanessa Ferguson  
Mr. Kyle Korth  
Ms. Kiaira May  
Dr. Bobby Mukkamala & Dr. Nita Kulkarni  
Mr. Bryant Nolden & Ms. Jacqueline Edmonds  
Ms. Marissa Pierce  
Kelly Price

Expansion Project Endowment Contributors Since 1.13.22 - 3.9.22

Ms. Kerstin Lawrence  
Donor advised grant from William H. Piper - Flint Community Fund of the Community Foundation of Greater Flint

Film Society Members 2021/22 Since 1.13.22 - 3.9.22

Ms. Sandra K. Smith

Special Gifts

To support General Operating  
Mr. & Mrs. Michael A. Farella  
Mr. & Mrs. Franklin H. Kasle  
Ms. Teresa A. Littlejohn  
Donor advised grant from William H. Piper - Flint Community Fund of the Community Foundation of Greater Flint

Purchased a Gift of an FIA Membership  
Ms. Kathleen George for Kathleen Moore  
Ingrid G. Halling & Robert

Thomas for Mike & Jessica Judson  
Dr. Kristy Spann for Zoey Bednarski

Art School Donation  
Mr. David Crawford & Ms. Cynthia Keith  
Ms. Ramona Sain

Friends of Modern Art Donation  
Mr. Kristopher Johns & Ms. Vanessa Ferguson

To support Collections Fund for the purchase of future artwork  
Randoph Piper Trust

Grant for Furniture Restoration  
Viola E. Bray Charitable Trust

Sponsor of Art à la Carte Summer 2022  
Mr. James R. Chintyan

Support of FIA Magazine 22/23  
Ms. Lynne Hurand

Support of Hot Shop Demonstration Days  
McLaren Health Care

Support of Huntington Free Saturdays 21/22  
Huntington Bank

In Honor

In honor of Dr. Dong Wha Ohm & Mrs. Young Jin Ohm  
Mr. Andrew Ohm

In Memory

In memory of Susan Steiner Bolhouse  
Mr. & Mrs. David F. Barbour

In memory of Edwin Bradley to support Film Society Legacy Fund

Anonymous  
Steven & Valarie Bailie  
Mr. & Mrs. Donald F. Dahlstrom  
Mr. John V. Dempsey & Ms. Margo Lakin  
Mr. & Mrs. Joseph A. Eufinger  
Ms. Nora G. Fisher  
Flint Jewish Federation  
Mr. & Mrs. Joel H. Harris  
Mr. & Mrs. John B. Henry  
Mr. & Mrs. Franklin H. Kasle  
Mike & Kathy Laux  
Mr. & Mrs. Carl A. Leser  
Mr. & Mrs. Laurence E. MacDonald  
Ms. Linda L. Pylypiw  
The Ricotta Family  
Chuck & Kathryn Sharbaugh  
Ms. Berna S. Sorscher  
Mr. & Mrs. Carl Stoddard  
Mr. Bryan Whitledge

In memory of Howard Bueche  
Mr. & Mrs. Ralph Baldini  
Ms. Mary Ann Carmichael  
Mr. Mark Castellani & Ms. Lisa Hildorf  
Mr. Dallas Dort & Mrs. Sharon A. Peterson Dort  
Christopher & Jean Dundas  
Evelyn & Peter Gryson

Mrs. Donna Henneke  
Mr. & Mrs. John B. Henry  
Mr. & Mrs. Paul Kelley  
Mrs. Kathryn Lescelius  
Ann Kirchman Bauer, Peter Kirchman, Patricia Kirchman  
Lustig, Rosemary Kirchman  
Jennings  
Mr. & Mrs. David Schroeder  
Ms. Joan Theile  
Ms. Kathleen R. Wilson

In memory of Edward G. Henneke  
Mr. & Mrs. Paul Kelley

In memory of Susan McNally  
Flushing Tuesday Club  
Mr. Frank Kwiatek & Ms. Karen MacZuga

In memory of Randy Piper to support Acquisitions Fund  
Anonymous  
Mr. & Mrs. David F. Barbour  
Phil, Margaret, Lauren & Angela Barbour  
Ms. Rhea A. Bateman  
Frederick & Barbara Bellairs  
Ms. Janie Berry  
Mr. & Mrs. Gordon S. Brown, Jr.  
Judge Joseph J. Farah  
Kathleen Gazall, John Gazall, Gazall Lewis Architects

Thomas & Jane George  
Ms. Eleanor Green  
Mr. & Mrs. Joel H. Harris  
Ms. Judith I. Ingram  
Mr. & Mrs. Scott C. Johnson  
RJ & Kathleen Kelly  
Mr. James R. Kettler  
Mr. & Mrs. James Lay  
Sally & Bob LeFeber  
Ms. Olivia P. Maynard  
David & Suzu Neithercut  
Jeremy and Amy Piper Fund of the Community Foundation of Greater Flint  
The Mark & Kate Piper Family  
William H. Piper Family - Donor advised grant from the Flint Community Fund of the Community Foundation of Greater Flint  
Ms. Janice Rundles  
Mr. & Mrs. Khalil M. Saab  
Mr. Steve Saipe & Ms. Carole Webb  
Mrs. Gail S. Shulman  
Mr. & Mrs. Randall Thornton  
Dr. & Mrs. Jay A. Werschky  
Mr. & Mrs. Jerome D. Winegarden, Jr.

In memory of Margaret Rabiah to support Permanent Collection Fund  
Ms. Christine McBryan

In memory of Dr. Paul Schroeder  
Mr. Dallas Dort & Mrs. Sharon A. Peterson Dort  
Mr. & Mrs. John B. Henry  
Chuck & Kathryn Sharbaugh

Print Club Members 2020/21

Since 1.13.22 - 3.9.22  
Dedicated Believers Ministries

Print Club Members 2021/22

Since 1.13.22 - 3.9.22  
Mr. & Mrs. Jeff Garrett  
Mr. & Mrs. Lee Hoyt  
Mr. Michael Martin & Mr. Bryan Paris  
Mr. Wayne Pickvet & Mr. Bruce A. Barrett  
Ms. Louise Hartwell White

Event Sponsors Since 1.13.22 - 3.9.22

Community Gala 2022  
Jane Bingham  
McLaren Flint  
Kathryn A. Moeller  
Neighborhood Engagement Hub  
Mr. & Mrs. Alvin & Renee Sanders

The Party 2022

American Machining, Inc.  
Anthony Abueita Attorney at Law, PLC  
Bridge Street Exchange  
Cygnit Automated Cleaning, LLC  
Mrs. Zouheir Fares  
Scott B. Karlene, M.D. & Kevin J. Gaffney, M.D. Dermatology  
James & Harriet Lay  
Olivia Maynard  
Mrs. Bobby & Nita Mukkamala  
Olmsted Associates, Inc.  
Piper Legal  
Philip W. & T. Ardele Shaltz

Wine Tasting 2022

3Sixty Interactive  
Behm and Behm, P.C.  
Charles & Pamela Boike  
Flint Cultural Center Corporation  
FUNchitecture, LLC  
Cathy & Andrew Gentry  
Stephen & Rosanne Heddy  
Gary & Carol Hurand  
Alvern & Theresa Stephens-Lock  
McCredie Insurance Agency  
Zach McMunigal - BGM Insurance Agency  
Kathryn A. Moeller  
Walker Electric, Inc.  
Woodhaven at the Meadows  
Xcelerated IT Solutions





In Celebration of  
Margaret Rabiah

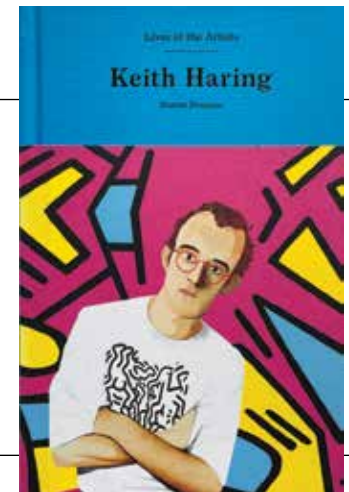
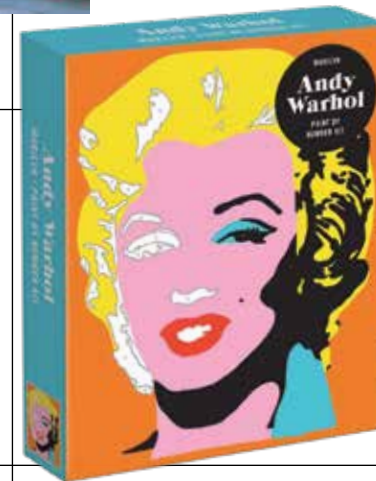
Please send in this form completed with your designation.

contact Kathryn Sharbaugh  
at 810.234.1695 or  
ksharbaugh@flintarts.org.

## Supporting children's programs at the Flint Institute of Arts



After seeing *Being Human: Contemporary Art from the Rubell Museum*, make sure to stop by the FIA Museum Shop to browse unique souvenirs that feature some of your favorite contemporary artists. From Warhol to Basquiat, we are sure the Museum Shop has the perfect item for you or to give as a gift to an art-loving person in your life.



Members always receive a 10% discount on Museum Shop purchases.

**FOLLOW US @**  
**FIAMuseumShop**



Museum Shop Hours  
Mon-Sat, 10a-5p\*;  
Sun, 1p-5p

*\*The Museum Shop is open extended hours for select special events.*





1120 E. Kearsley St. Flint, MI 48503

# FIA



## 5.18.22

The Flint Institute of Arts will join a worldwide community of museums to celebrate International Council of Museums' International Museum Day. The objective of International Museum Day is to raise awareness of the fact that museums are an important means of cultural exchange, enrichment of cultures and development of mutual understanding, cooperation and peace among peoples.

To mark the occasion, the FIA will offer free admission to the galleries and special exhibitions. The FIA Museum Shop and The Palette Café will offer members a 20% discount and non-members a 10% discount.

The Flint Institute of Arts joins museums across the nation offering free admission to active duty military and their families from Memorial Day to Labor Day. The Blue Star Museums program was established to acknowledge the many sacrifices made by our military personnel by making it possible for them to enjoy museums in cities throughout the U.S. Visit [BlueStarMuseums.com](https://www.bluestarmuseums.com) for a list of other participating institutions.

