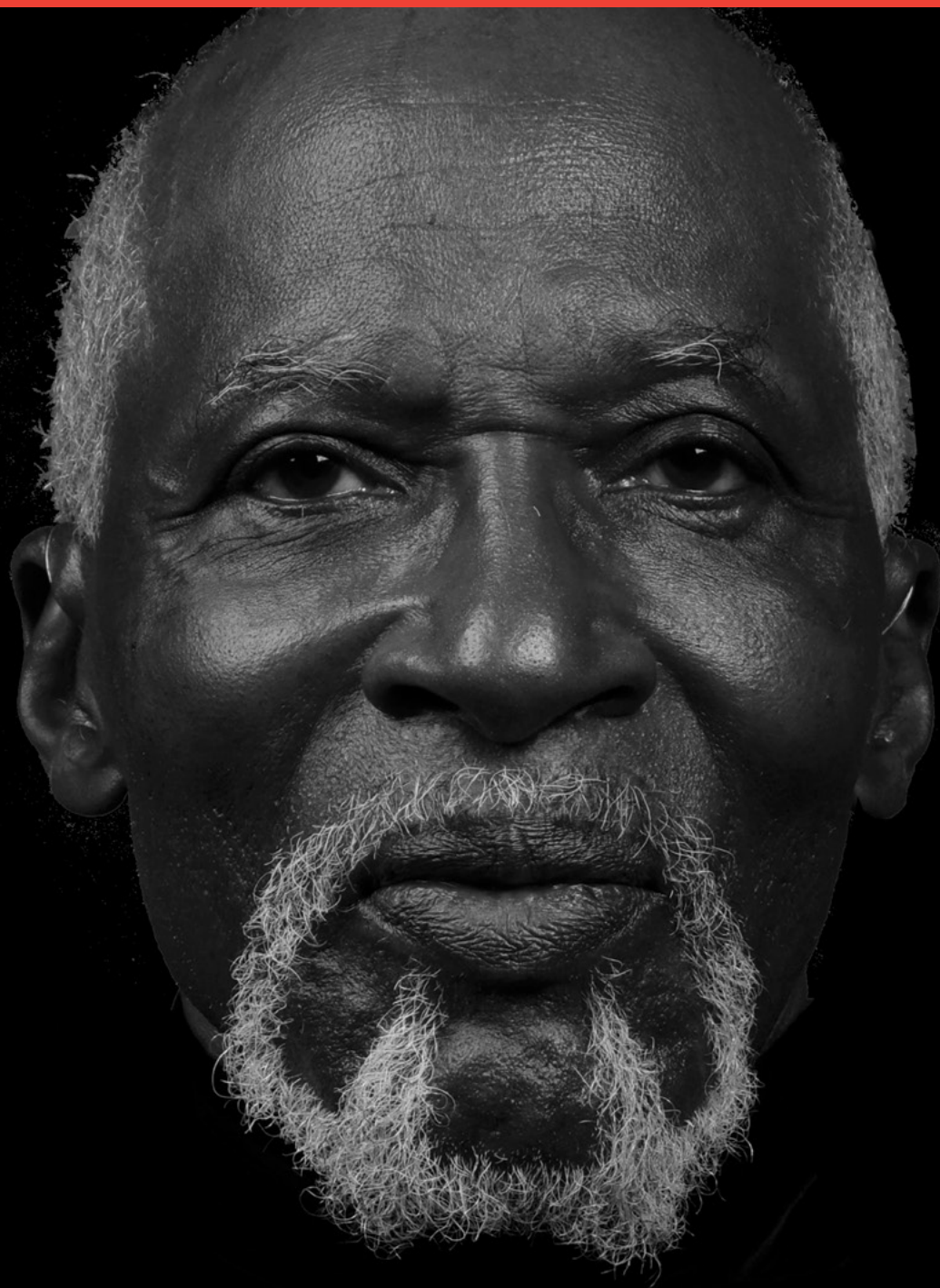


# FIA magazine

JAN-FEB 2022



# CONTENTS

executive director	1	presentation & lectures	19-21
exhibitions	2-8	calendar	22-23
featured acquisitions	9	membership	24-28
art on loan	10-11	contributions	29-32
films	11-13	museum shop	33
art school	14-15		
education	16-18		

## Office Hours

Mon-Fri, 9a-5p

## Gallery Hours

Mon- Sat, 10a-5p; Sun, 1p-5p

Closed on major holidays

## FIA Theater Hours

Fri & Sat, 7:30p; Sun, 2p

## Museum Shop & Art School Gallery

810.234.1695

Mon-Sat, 10a-5p; Sun, 1p-5p

## The Palette Café

810.249.0593

Mon-Fri, 9a-5p; Sat, 10a-5p;

Sun, 1p-5p

The Museum Shop, Art School Gallery, and The Palette Café are open late for select special events.

## Admission

Adults \$10.00\*

12 & under FREE

Students w/ ID \$8.00\*

Senior citizens 62+, \$8.00\*

active military, & veteran



FREE SATURDAYS

\* Free to FIA members and Genesee County residents

## Website

flintarts.org

## Address

1120 E. Kearsley St.

Flint, MI 48503

## Telephone

810.234.1695

## Fax

810.234.1692

## Board of Trustees

Thomas B. Lillie, *President*

Mark L. Lippincott, *First Vice-President*

Dean T. Yeotis, *Second Vice-President*

Elisabeth Saab, *Secretary*

Martha Sanford, *Treasurer*

Elizabeth S. Murphy, *Immediate Past President*

Kathryn C. Boles

John Bracey

Eleanor E. Brownell

Ann K. Chan

James D. Draper, *Founders Society President*

Mona Hardas

Carol Hurand

Lynne Hurand

Dale Keipert

Raymond J. Kelly III

Alan Klein, *Trustee Emeritus*

Eureka McCormick

Matthew L. Norwood

Karl A. Olmsted

Dr. Brenda Rogers-Grays

Mary Coe Ryan

Sharon A. Simeon

Theresa A. Stephens-Lock

Tiffany Stolzenfeld

Lynne A. Taft-Draper, *Friends of Modern Art President*

David T. Taylor

Anton Thornquist

Gregory G. Viener

Dale K. Weighill

Jay Werschky

Shannon Easter White

## Administration

John B. Henry, *Executive Director*

Michael A. Melenbrink, *Director of Finance & Administration*

Marissa Pierce, *Director of Development*

Tracee J. Glab, *Curator of Collections & Exhibitions*

Monique M. Desormeau, *Curator of Education*

Donovan Entrekin, *Director of the Art School*

Sarah Mullane, *Director of Member & Guest Relations*

# From the Executive Director

Dear FIA members,

In 1996, when I interviewed for the position of museum director at the Flint Institute of Arts, the head of the search committee pulled me aside and told me they were looking for someone who would stay at least five years. That advice resonated with me. By then, having worked in three museums in as many states, I had learned that to move an institution forward, it takes time to develop programs, cultivate relationships, and, above all, earn the trust of the community, the staff, and all who support the institution. That was 25 years ago. How time flies.

Two years ago I announced to the Board of Trustees my intention to retire, but then the pandemic hit, and I agreed to stay until it seemed reasonable to start looking for my replacement. And now, the time seems right for me to step down from my position effective June 30, 2022.

The FIA Executive Committee, led by Board President Tom Lillie, has hired Mark Oppenheim and Associates out of San Francisco to conduct a national search and the process has begun. They have had success in finding directors for the Art Institute of Chicago, San Antonio Museum of Art, Fine Arts Museum of San Francisco, and Toledo Museum of Art, to name a few.

I am proud to say that during my tenure, we have continuously operated in the black, completed nearly a dozen capital projects, including five expansions, increased the diversity and quality of our exhibitions and collections, engaged a broader audience, and created a national reputation for excellence. With these achievements, I believe the Institute is well positioned for the many great opportunities that lie ahead.

Though, collectively these accomplishments are gratifying, my greatest satisfaction comes from comments visitors make about their interaction with art in the galleries and from seeing the progress students are making in the studios. Hearing we have created meaningful experiences in the galleries, lecture hall, theater, and studios always has been, for me, the best measure of success.



After 50 years in the field, with half of them at the FIA, I will miss the stimulation of working in such a challenging and fulfilling position. With the dedicated leadership of the Board of Trustees, hundreds of volunteers, my highly professional and hard-working colleagues, generous patrons, and all of you, the FIA has become essential to our community's future growth and development.

It has been my great honor and joy to be a part of creating the vision that has brought the FIA this far, and I am truly grateful for your support over the years.

**John B. Henry**

*Executive Director*

The FIA is a non-profit, equal opportunity employer, and provides programs and services without regard to race, color, religion, national origin, age, gender identity, or disability.



Operating support for the FIA is provided in part by the Charles Stewart Mott Foundation.



FIA operations are funded in part by the Genesee County Arts Education and Cultural Enrichment Millage funds. Your tax dollars at work.



FIA Exhibitions and Programs are made possible in part with the support of the Michigan Council for Arts and Cultural Affairs, a partner agency of the National Endowment for the Arts.



This magazine, made possible through a generous donation by Lynne Hurand, is published five times per year for mailing to FIA members, museums, and libraries around the country.

cover image from the exhibition (page 2)

**Jerry Taliaferro**

American, born 1953

**Herbert L. Pitts** (detail), 2021

Digital print

16 x 12 inches

2021.147

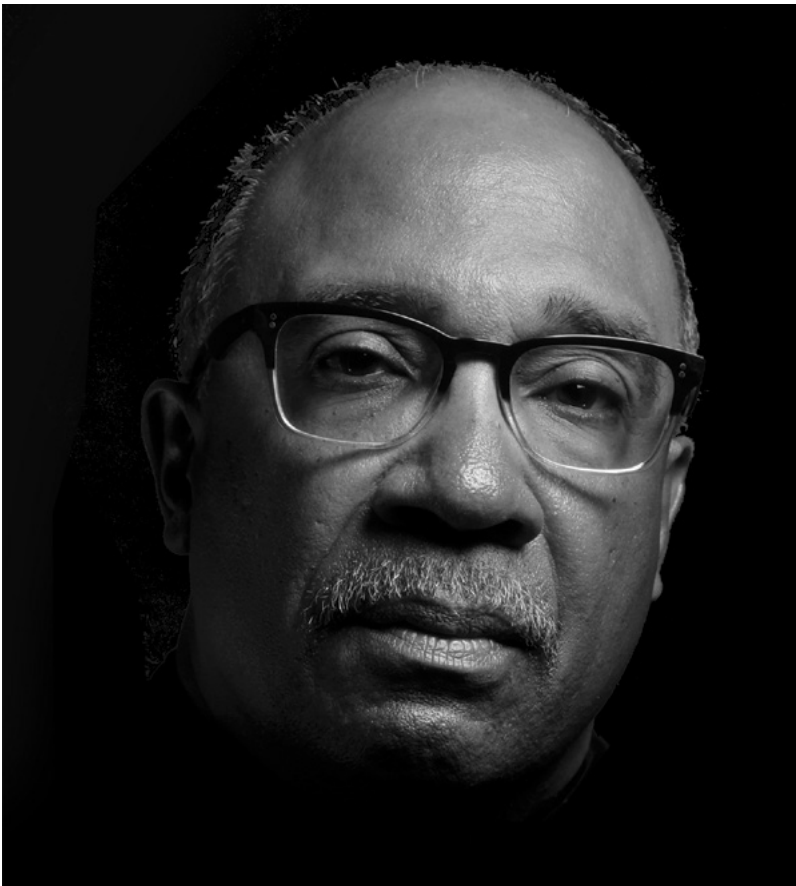


# Sons Seeing the Modern African American Male

1.23.22 - 4.16.22

Hodge & Henry Galleries

*Sons: Seeing the Modern African American Male* features black-and-white and color photographs by Jerry Taliaferro of 49 men from the Flint community. This exhibition is much more than a photographic study, as it also aims to explore perceptions and biases. In Taliaferro's words, "Recent



**Jerry Taliaferro**  
American, born 1953  
*David Steven Gibson*  
(detail), 2021  
Digital print  
16 x 12 inches  
2021.107

Sponsored by



For good. For ever.  
McCombs Family Flint  
Non-Endowed Fund  
of the Community  
Foundation of Greater  
Flint

An accompanying  
exhibition  
catalogue will  
be available for  
purchase in the  
Museum Shop.

**Jerry Taliaferro**  
American, born 1953  
*Omar Batson*, 2021  
Digital print  
18 x 13 inches  
2021.89



events point to the urgent need for conversations about the contemporary Black American male. Any effort, however humble, to foster an understanding of this largely misunderstood and often marginalized segment of the American population is of utmost importance."

For his subjects, Taliaferro photographed men who were nominated by the community in early 2021. The resulting images are divided into two sections: first a black-and-white photograph of just their face, and then later in the exhibition a photograph in color, where the subjects were instructed to "be themselves." Visitors will have the opportunity to reflect and reconcile their initial reactions to the portraits, after getting to know the men and their stories through text labels and QR codes that lead to interviews conducted by the artist.

This exhibition marks both the return of Jerry Taliaferro to Flint and the fifth anniversary of *Women of a New Tribe*, a popular exhibition that featured 49 black-and-white photographs by Taliaferro of women from the Flint community.

## Community Gala

1.22.22 • 6:00p-9:00p

This year's Gala takes place in celebration of the exhibition opening *Sons: Seeing the Modern African American Male* by Jerry Taliaferro. He returns to Flint to feature the men of our community on the fifth anniversary of the sensational *Women of a New Tribe* exhibition.

The evening includes a Q&A with Taliaferro, exhibition opening, strolling dinner, live entertainment, and a cash bar. Theater seating is first come, first served. Doors close at 6:00p. Overflow seating will be available in Isabel Hall to view the lecture remotely.

Tickets available online at [flintarts.org](http://flintarts.org), by phone at 810.234.1695, or in person at the FIA. Advance tickets are \$40 for members and \$60 for non-members. At the door tickets are \$55 for members and \$75 for non-members.

Presentation @ 6:00p

**Q&A with Jerry Taliaferro**

**FIA Theater**

Jerry Taliaferro was born in the small southern town of Brownsville, Tennessee. After graduating high school in May 1972, he joined the Army. His real interest in began in 1981 when he was posted to Fort Bragg, North Carolina, for Special Forces training. While serving in Germany, his fascination with photography continued to grow and, in 1985, he was published for the first time when a Munich magazine purchased the rights to one of his images.

## Meet the Artist

1.23.22 • 2:00p-3:00p

Hodge & Henry Galleries

Meet and chat with artist Jerry Taliaferro in the exhibition.

**Complimentary  
Admission**



Community Gala  
Signature Sponsor



**Presentation  
begins promptly  
at 6:00p. Please  
be seated by  
5:45p.**



Jerry Taliaferro



# Drawing from Life

## Ed Watkins

1.15.22 – 4.10.22

Graphics Gallery

For almost 40 years, Flint native Ed Watkins has taught visual arts and design, which emphasizes the importance of observational skills practiced in life drawing classes.



Ed Watkins  
American, born 1950  
*The Draw*, 2013  
Waterless lithography on paper  
13 x 17 inches  
Museum purchase with funds  
from the Collection Endowment,  
2020.96

### Artist Talk

2.19.22 • 2p-2:45p

FIA Theater

Ed Watkins will discuss the exhibition *Drawing from Life*, which includes

works on paper that have been inspired by the distinctive and spiritual nature of his African American experience. The



Ed Watkins  
Photo by Jerry Taliaferro

Complimentary Admission

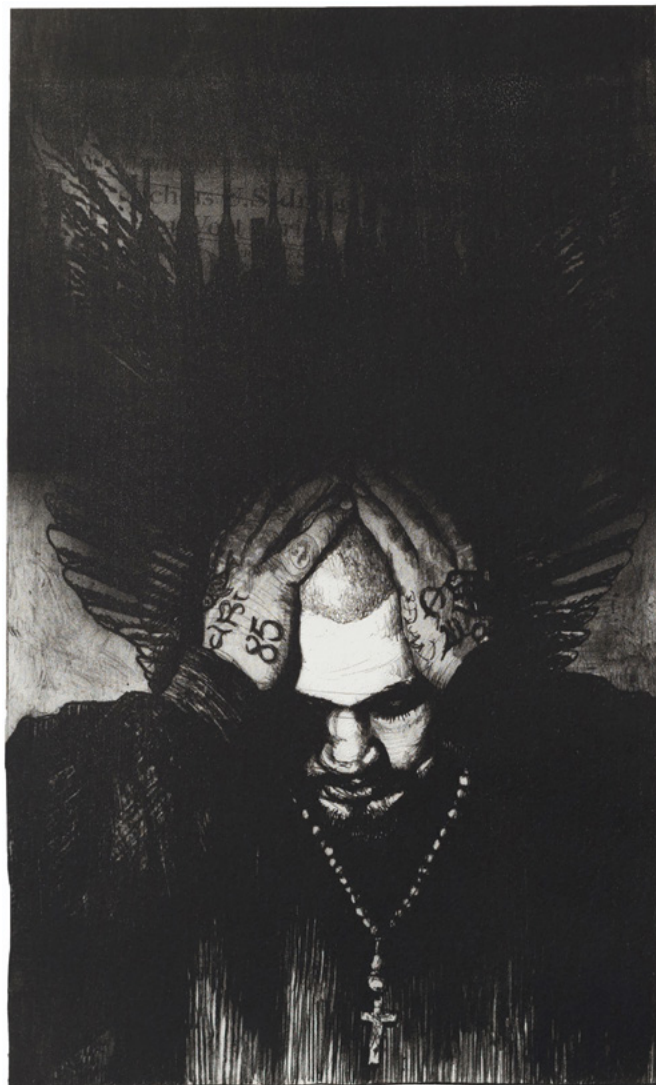
pandemic taught Watkins to practice staying still long enough to put what he calls "space between the notes" in his artwork.

In terms of music, space between notes allows sounds to resonate, reverberate, and reach their full measure of expression. Without this space, noise would result. Watkins will also share his concept of "visual music" from a series of narrative drawings that emerged during the pandemic.

For Watkins, however, "drawing from life" is not just a necessary technical skill but is how he defines his practice, using his personal observations and life experiences to guide what he creates. This exhibition includes drawing and mixed media artworks that are inspired by the artist's African American experience, exemplifying moments of reflection, celebration, healing, and despair. According to Watkins, "While some Black artists desire to be referred to simply as an artist, I have always desired to make my Black experience the center of my practice as a fine artist."

Ed Watkins received his Bachelor and Master of Education degrees from Bowling Green State University before receiving his Master of Art degree from Eastern Michigan University in 2010. In addition to his artwork, Watkins is also an adjunct instructor at Mott Community College, teaching classes in visual arts and design.

Ed Watkins  
American, born 1950  
*Surrender Pock*, 2013  
Polyester plate lithography on paper  
16 x 10 inches  
Museum purchase with funds from the  
Collection Endowment, 2020.95



# Time (Constant, Suspended, Collapsed)

## Neha Vedpathak

through 1.9.22

Graphics Gallery



This exhibition features works by Detroit-based artist Neha Vedpathak. Using a push-pin, Vedpathak meticulously separated the fibers of hand-made Japanese paper, creating a dimensional lace-like fabric, which she then manipulates by painting, sewing, and collaging.

Neha Vedpathak  
Indian, born 1982  
*Body*, 2021  
Plucked Japanese handmade paper, acrylic paint, thread, acrylic polymer  
13 1/2 x 12 inches  
Courtesy of the artist



# Steeped in Tradition

through 3.20.22

Harris-Burger Gallery

After water, tea is the most consumed beverage in the world and it plays a profound role in many cultures. Over 2 billion cups are consumed per day worldwide. Because of this, teaware—objects related to the consumption of tea—has been a popular outlet for artistic expression. This exhibition includes contemporary teapots, tea bowls, cups and saucers and other tea-related objects from the museum's permanent collection. Whether they are intended to be fully functional, ornamental, or somewhere in between, these artworks showcase the endless possibilities for creativity in teaware.

Teapots (along with other teaware in this exhibition) can hold clues to history, cultural and societal practices, identity, and self-expression. Many contemporary artists are drawn to them not only for their important

place in the history of ceramics but also for the technical challenge. Making a teapot requires mastery of many techniques and is somewhat a rite of passage for many artists working in clay. Elements like the handle can be handbuilt, one of the oldest techniques for working with clay, while the body and spout could be produced on the potter's wheel, all of which takes practice and skill. While some artists prefer to create functional teapots, others adapt the form with no intention of it ever being used.

**Mary Ann Clark**  
American  
Teapot and Stand, n.d.  
Ceramic  
4 1/2 x 6 1/2 inches  
Gift of Dr. Robert and  
Deanna Harris Burger,  
2009.138



# Restrained/Unrestrained

through 7.17.22

Ann K. Walch-Chan Decorative Arts Gallery

Featuring objects from around the globe, from ancient to contemporary, this exhibition explores the creative capacity of works made to enclose and hold materials in a wide variety of forms and styles. As these objects demonstrate, the need to design vessels for multiple purposes led to elaborate creations not only in function but visual appeal as well. These designs reflect the artistic expression of the culture and time period in which they were made, sometimes restrained in ornament with subtle details, and other times unrestrained with extravagant and ornate surface decoration.

While these objects were once a part of daily life, from objects used in ceremonial settings to personal adornment, they have

become artworks in their own right. A number of works in this exhibition push the boundaries of containment—acting to simultaneously hold its contents while allowing for a secondary element—like light or smoke—to permeate its walls. In more than 50 objects from the permanent collection, including never-before-seen works, the artistic possibilities of materials, such as clay, glass, and metal, as well as an array of highly skilled techniques, are revealed.

**Komai**  
Japanese  
*Six-sided Box*, Meiji  
Period, 1868-1912  
Gold and gold-bronze  
3 1/2 x 2 1/2 inches  
Gift of Dr. and Mrs. Leo  
S. Figiel, and Dr. and  
Mrs. Steven J. Figiel,  
1982.399

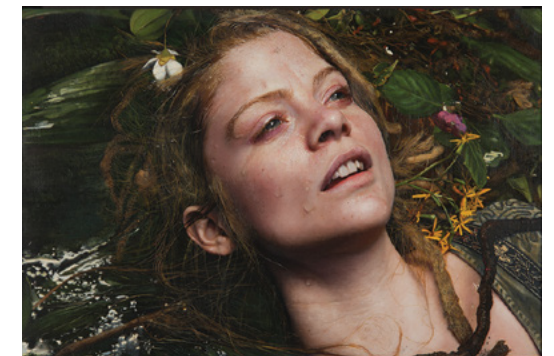


# Brush with Reality Yigal Ozeri

through 1.2.22

Hodge & Henry Galleries

Don't miss the final days of *Brush with Reality: Yigal Ozeri*, which highlights the last 14 years of Ozeri's works, from his intricate portraits to his scenes of the streets of New York.



**Yigal Ozeri**  
Israeli, born 1958  
*Untitled; Priscilla in Ecstasy*,  
2008  
Oil on paper on board  
16 x 24 inches  
Collection of Louis K. and  
Susan P. Meisel

**Yigal Ozeri**  
Israeli, born 1958  
*Untitled; New York*, 2019  
Oil on canvas  
12 x 18 inches  
Collection of the Artist, NJ





January

## Reverse Tape- Portraits of Viewers (Compilation Tape)

Bill Viola inverts the position and gaze of the television viewer in a series of 44 portraits of individuals sitting at home in their living rooms, staring silently at the static camera as though it were a TV set. Produced specifically for broadcast television, the original one-minute segments of over 40 subjects from the Boston area were intended as unannounced inserts during the daily programming schedule. Viola essentially subverts the time and space of broadcast television, as the extended duration of these real-time portraits interrupts the spatial and temporal field of TV scheduling, like edits. Writes Viola, "Two classical poses emerge in this work—the formal photographic portrait and the posture of the private television viewer at home. The work momentarily inverts the classical TV/viewer relationship, and television becomes a medium of reverse portraiture."



**Bill Viola**  
American, born 1951  
*Reverse Tape-Portraits of Viewers (Compilation Tape)*, 1984  
15 minutes  
Color, sound  
Courtesy of Electronic Arts Intermix (EAI), New York

February

## Suspension

Letting go of realist constraints, this sequence of mirror-images dives into a cosmic ocean of ever metamorphosing baroque circumvolutions in which our minds try to capture reassuring forms before letting the ghostly demons blur our vision. The work of Nicolas Provost walks the fine line between dualities, balancing fiction and fine arts, the grotesque and the moving, the beautiful and the cruel. His works provoke both recognition and alienation and succeed in pulling audience expectations into an unraveling game of mystery and abstraction. Time and form are manipulated, cinematographic and narrative language is analyzed, accents are shifted, and new stories are told.

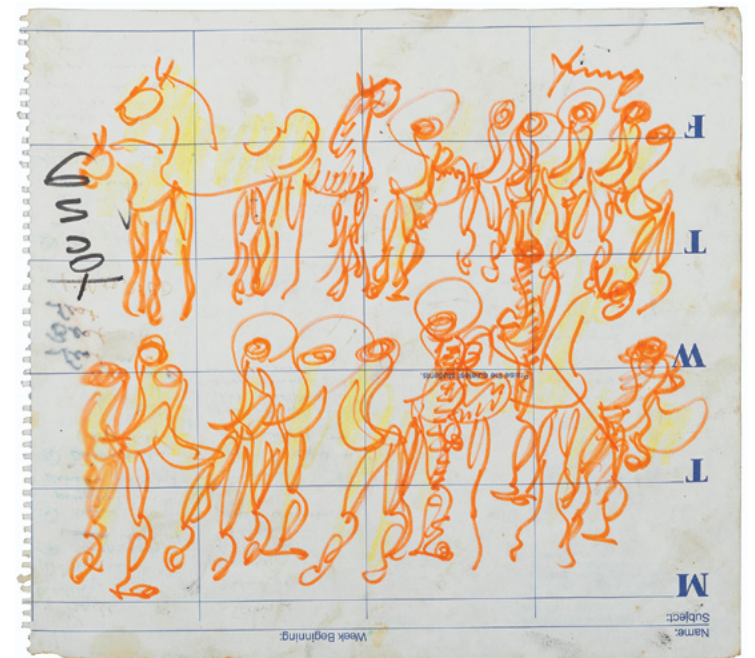


**Nicolas Provost**  
Belgian, born 1969  
*Suspension*, 2007  
4:50 minutes  
B&W and color, silent  
Courtesy of Video Data Bank, [www.vdb.org](http://www.vdb.org), School of the Art Institute of Chicago

## Purvis Young

In the past two years, the FIA has received 68 artworks by Purvis Young. Sixty-six objects, including drawings and paintings, were given by Selig Sacks, and two drawings were donated by Dr. Sharon Simeon. These gifts represent a significant addition to our collection of works by African American artists, which continues to grow each year through gifts and purchases.

Purvis Young drew on his life experience living in the Overtown neighborhood of Miami, Florida, creating art on



**Purvis Young**  
American, 1943–2010  
*Big Smiling Head in Landscape with People*, 1980s  
Mixed media on found wood panel  
24<sup>7</sup>/<sub>8</sub> × 21<sup>7</sup>/<sub>8</sub> × 2 inches  
Gift of Selig D. Sacks in honor of Rodney Harder, a gifted educator and artist, 2019.313  
© Larry T. Clemons / Gallery 721 / Artists Rights Society (ARS), New York

**Purvis Young**  
American, 1943–2010  
*Untitled*, 1980s  
Marker on paper  
10<sup>5</sup>/<sub>8</sub> × 11<sup>3</sup>/<sub>4</sub> inches  
Gift of Selig D. Sacks, 2019.295  
© Larry T. Clemons / Gallery 721 / Artists Rights Society (ARS), New York

about Old Masters such as Rembrandt and El Greco. Although he was considered the unofficial historian of Overtown, the themes in his work are universal to the Black experience.

In his life, he realized that he could use his art to express himself and his grievances with the world. Young's paintings and drawings became his voice of protest for the injustices he and his community experienced. According to Young, "I paint the problems of the world—what I see in the world, I paint it. Sometimes I hope the world is a better place, but I just paint the problem." Young continued to draw and paint up until his death in 2010. On his inability to stop creating art, he once said, "When the world quiets down, I'll quiet down."

discarded objects he found. On his bicycle, he circled his neighborhood gathering materials, supplies, and inspiration for his works. Scraps of paper, restaurant menus, discarded doors, wood, and metal became his canvases. Using quick, expressive gestures, he filled these works through his unique visual lexicon of common imagery such as boats, horses, warriors, and prisoners. Young taught himself art, studying art books



The artworks listed here are on loan from the FIA to the following exhibitions:

### Bob Thompson: This House is Mine

**Colby College Museum of Art**  
Waterville, Maine  
7.20.21 – 1.9.22

**Smart Museum of Art**  
**The University of Chicago**  
Chicago, Illinois  
2.10.22 – 5.15.22

**Bob Thompson**  
American, 1937–1966  
*Study for St. George and the Dragon*, 1961  
Crayon on paper  
21 x 14 inches  
Museum purchase with funds from the Collection Endowment, 2015.61  
© Michael Rosenfeld Gallery LLC, New York, NY

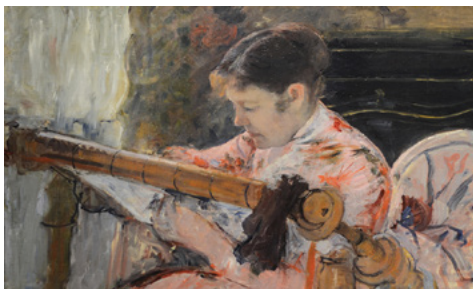


Bob Thompson

### Close-Up

**Fondation Beyeler**  
Basel, Switzerland  
9.19.21 – 1.2.22

**Mary Cassatt**  
American, 1844–1926  
*Lydia at a Tapestry Frame*, ca. 1881  
Oil on canvas  
25<sup>5</sup>/<sub>8</sub> x 36<sup>3</sup>/<sub>8</sub> inches  
Gift of The Whiting Foundation, 1967.32



Mary Cassatt

### Scandinavian Design and the United States

**Nationalmuseum**  
Stockholm, Sweden  
10.14.21 – 1.9.22

**Lillian Holm**  
American, born Sweden, 1896–1979  
*First Sight of New York*, ca. 1930  
Linen, cotton, wool, viscose rayon  
82 x 64<sup>1</sup>/<sub>2</sub> inches  
Gift of Mrs. Lillian Holm in memory of Ralph T. Sayles, 1965.14



Lillian Holm

### Private Lives: Home and Family in the Art of the Nabis, 1890–1900

**Portland Art Museum**  
Portland, Oregon  
10.24.21 – 1.23.22

**Pierre Bonnard**  
French, 1867–1947  
*The Lamp*, ca. 1899  
Oil on academy board mounted on panel  
22<sup>1</sup>/<sub>4</sub> x 27<sup>1</sup>/<sub>2</sub> inches  
Gift of The Whiting Foundation and Mr. and Mrs. Donald E. Johnson, 1977.25



Pierre Bonnard



Guro

### Charles E. Burchfield: A Lifetime of Themes

**Burchfield Penney Art Center at Buffalo State College**  
Buffalo, New York  
12.10.21 – 3.27.22

**Charles Burchfield**  
American, 1893–1967  
*North Woods in Spring*, 1951–1964  
Watercolor on paper  
56 x 40 inches  
Bequest of Mary Mallory Davis, 1990.31

### Africa, Imagined: Reflections on Modern and Contemporary Art

**Kalamazoo Institute of Arts**  
Kalamazoo, Michigan  
1.22.22 – 5.1.22

**Bobo**  
Burkina Faso  
*Plank Mask, Do Society*, n.d.  
Polychromed wood  
35 x 9 x 9<sup>1</sup>/<sub>2</sub> inches  
Gift of Justice and Mrs. G. Mennen Williams, 1973.19

**Baule**  
Côte d'Ivoire  
*Kple, Kple Mask*, n.d.  
Polychromed wood  
15<sup>1</sup>/<sub>4</sub> x 9<sup>1</sup>/<sub>2</sub> x 4 inches  
Gift of Justice and Mrs. G. Mennen Williams, 1973.13

**Dogon**  
Republic of Mali  
*Kanaga Mask*, n.d.  
Polychromed wood  
38 x 23<sup>1</sup>/<sub>4</sub> x 7 inches  
Gift of Justice and Mrs. G. Mennen Williams, 1973.56

**Guro**  
Côte d'Ivoire  
*Antelope Mask (Zamble)*, n.d.  
Polychromed wood  
15<sup>7</sup>/<sub>8</sub> x 5<sup>1</sup>/<sub>4</sub> x 3<sup>3</sup>/<sub>4</sub> inches  
Gift of Justice and Mrs. G. Mennen Williams, 1973.14

**Yoruba**  
Federal Republic of Nigeria  
*Osanyin Staff*, n.d.  
Iron  
25<sup>1</sup>/<sub>4</sub> x 8<sup>1</sup>/<sub>2</sub> x 9<sup>1</sup>/<sub>2</sub> inches  
Museum purchase with funds from the Collection Endowment, 2018.71

### Harry Bertoia

**Nasher Sculpture Center**  
Dallas, Texas  
1.29.22 – 4.23.22

**Harry Bertoia**  
American, born Italy, 1915–1978  
*Untitled*, ca. 1966  
Bronze  
22 x 39<sup>1</sup>/<sub>4</sub> x 7<sup>3</sup>/<sub>4</sub> inches  
Gift of Mr. and Mrs. David Martin, 1967.27

## SPECIAL SCREENING



## Communities First & FIA Film Series

**JAN 13 @ 7:00p**

### Finding Fellowship

(U.S., 2021) Directed by Jason Green, 60 min., not rated  
This documentary tells of how three racially segregated Methodist churches—two white and one Black—decided to merge in the wake of the assassination of The Rev. Dr. Martin Luther King Jr. It highlights the need to preserve stories, memories, and lessons of the past.

**FEB 10 @ 7:00p**

### Black Art: In the Absence of Light

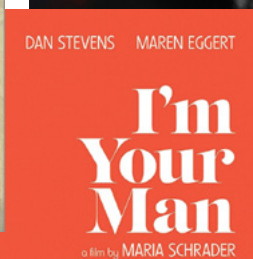
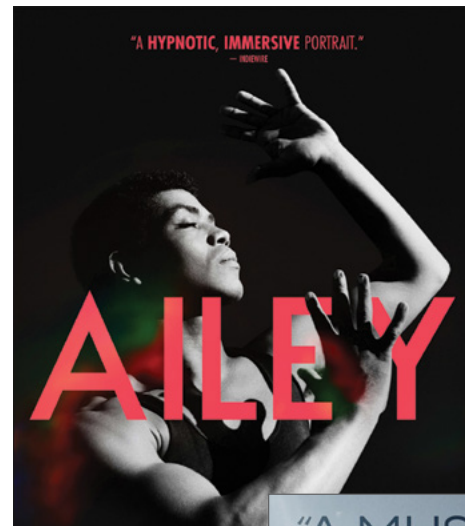
(U.S., 2021) Directed by Sam Pollard, 86 min., rated TV-MA  
With a focus on the landmark *Two Centuries of Black American Art* exhibit in Los Angeles, this film follows various African American artists and their past and present contributions to the art world.

The local nonprofit Communities First Inc. is partnering with the Flint Institute of Arts to present a monthly series of films dealing with African American culture in the museum theater.

For up-to-date information,  
visit [communitiesfirstinc.org](http://communitiesfirstinc.org)  
or [flintarts.org](http://flintarts.org)







#### Admission

- \$7 non-members
- \$6 FIA members
- \$5 FOMA members

Tickets available at the door  
or at [flintarts.org/films](http://flintarts.org/films)

Public health and safety will be considered in terms of theater capacity and other conditions for in-person screenings.

JAN 7, 8 @ 7:30p, JAN 9 @ 2:00p

#### Kurt Vonnegut: Unstuck in Time

(U.S., 2021) Directed by Robert B. Weide and Don Argott, 127 min., not rated

This is the definitive documentary about the life of Kurt Vonnegut, author of *Slaughterhouse-Five*, *Breakfast of Champions*, and many more. Oscar-nominated and Emmy-winning filmmaker Robert B. Weide's 25-year friendship with the novelist is at the heart of this revelatory movie.

JAN 14, 15 @ 7:30p, JAN 16 @ 2:00p

#### I'm Your Man

(Germany, 2021) Directed by Maria Schrader, 105 min., subtitled, not rated

In what *Women on Film* calls "the high-tech feel-good rom-com of the year," a research scientist who needs funds for her studies agrees to participate in an unusual experiment: She will live with a humanoid robot designed to make her happy.

JAN 21, 22 @ 7:30p, JAN 23 @ 2:00p

#### Bergman Island

(France, 2021) Directed by Mia Hansen-Løve, 113 min., rated R

In a "beguiling new film about love, cinema, and Ingmar Bergman" (*The New Republic*), an American moviemaking couple retreats to the island that inspired the great director, but reality and fiction begin to blur. Tim Roth heads the cast.

JAN 28, 29 @ 7:30p, JAN 30 @ 2:00p

#### Blue Bayou

(U.S./Canada, 2021) Directed by Justin Chon, 117 min., rated R

As a Korean-American man raised in the Louisiana bayou works hard to make a life for his family, he must confront the ghosts of his past as he faces possible deportation. Oscar winner Alicia Vikander (*The Danish Girl*) co-stars for emerging director Justin Chon.

FEB 4, 5 @ 7:30p, FEB 6 @ 2:00p

#### Ailey

(U.S., 2021) Directed by Jamila Wignot, 82 min., rated PG-13

An immersive portrait of dance pioneer Alvin Ailey, told through his own words and a new dance inspired by the life of the visionary dancer, director, choreographer, and activist.

FEB 11, 12 @ 7:30p, FEB 13 @ 2:00p

#### Catch the Fair One

(U.S., 2021). Directed by Josef Kubota Wladyka, 85 min., not rated

A Native American woman, a former boxer, embarks on the fight of her life when she intentionally enters the world of sex trafficking while searching for her missing sister. "Wins in a knockout," praises *The Playlist*.

FEB 18, 19 @ 7:30p, FEB 20 @ 2:00p

#### The First Wave

(U.S., 2021) Directed by Matthew Heineman, 94 min., rated R

With exclusive access inside one of New York's hardest-hit hospital systems, Oscar-nominated director Matthew Heineman (*Cartel Land*) spotlights the everyday heroes at the epicenter of COVID-19.

FEB 25, 26 @ 7:30p, FEB 27 @ 2:00p

#### The Man Who Sold His Skin

(Tunisia/France, 2021) Directed by Kaouther Ben Hania, 104 min., subtitled, not rated

In Lebanon, a young Syrian refugee agrees to have his body tattooed into a living work of art that is exhibited in a museum. But he comes to realize that his decision might actually mean anything but freedom.

Film titles and dates are  
subject to change.

Films are  
supported by



Screenwriter  
sponsor



Media  
sponsor





The FIA Art School is dedicated to the enrichment of the community through individual academic exposure to the visual arts. Highly qualified faculty offer instruction in drawing, painting, glass arts, weaving, photography, animation, ceramics, sculpture, college portfolio development, and early childhood art courses. The Art School has served our community since 1928, helping students develop a wide range of artistic goals and skill levels.

The Art School's Fall session, December 6 through March 13, offers 85 classes in addition to those featured here. The catalog is available online at [flintarts.org/learn/news](http://flintarts.org/learn/news). Visit our website, call 810.237.7315, or email [arted@flintarts.org](mailto:arted@flintarts.org) for more information.

**\*FIA members  
receive 20% off  
tuition**



## CHILDREN

### Learn to Draw

Students will learn the basics of drawing including contour line, gesture, and shading while developing the skills from eye to hand to paper. Students will also make their own sketchbooks.

#### Ages 9-12

3/10-4/7 (TH) 4:30p-5:30p  
Tuition: \$50\*

## TEENS

### Teen Pottery

Students will be introduced to the vast possibilities of working with clay. Many techniques are covered including hand-building, slab construction, extrusions, and throwing on the potter's wheel.

#### Ages 13-17

1/10-3/7 (MO) 5:00p-8:00p  
Tuition: \$251\*



## ADULTS

### Open Figure Sessions

Take advantage of these uninstructed sessions with a live model to hone your observation skills, try out new media and styles, or to simply enjoy the camaraderie of fellow artists drawing together. All skill levels and non-photographic media are welcome.

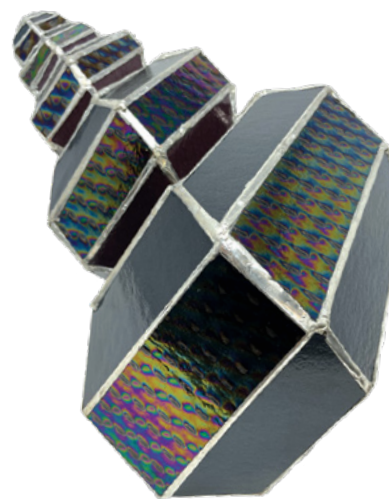
**Beginner/Intermediate/Advanced**  
12/7-3/8 (TU) 5:30p-8:30p  
No Class 12/21 & 12/28  
Tuition \$88\* or Drop-in \$8 per session

### Introduction to Borosilicate Flameworking

Students will learn to create small objects, apply color, and explore making both solid and hollow sculptural forms. Through a mixture of technical exercises and creative projects, students will delve into the potential of this material. Students will gain confidence in their abilities and will practice the skills necessary to create well-crafted objects.

#### Beginner

1/3-2/14 (MO) 6:00p-9:00p  
Tuition \$210\*



Nathaniel Ostrom, Student

### Mixed Media Sculpture

Learn the elements of 3-D design by creating sculptures using a variety of materials including clay, wire, foam board and more. We will design and build a one-of-a-kind creation focusing on balance, positive and negative space.

**Beginner/Intermediate/Advanced**  
1/13-3/10 (TH) 2:30p-4:30p  
Tuition \$160\*

### One-Day Workshop Intro to Oil Painting

For ultra-beginners, this class will provide an introduction to oils, mediums, solvents, and painting substrates such as cotton duck, linen, and panel. A variety of brush techniques will be demonstrated and students will practice these techniques on sample canvases.

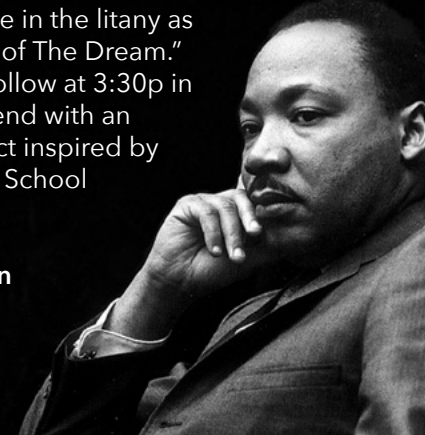
**Beginner/Intermediate/Advanced**  
2/12 (SA) 11:00a-5:00p  
Tuition: \$70\*  
3/5 (SA) 11:00a-5:00p  
Tuition: \$70\*

## Martin Luther King Jr. Day Celebration

January 17 • 2:00p-5:00p

The Flint Institute of Arts, in collaboration with the Flint Public Library, celebrates the legacy of Dr. Martin Luther King Jr. with a full day of free activities. The day begins with a Community Celebration at 2:00p in the FIA Theater, featuring keynote speaker Dr. Debra Furr-Holden, Ph.D.; Associate Dean for Public Health Integration at Michigan State University and Director of the Flint Center for Health Equity Solutions, with program emcee (Rev.) Moses Bingham, Community Foundation of Greater Flint. Hear the "I Have A Dream" speech and participate in the litany as "We Are The Keepers of The Dream." More performances follow at 3:30p in Isabel Hall. Activities end with an inspirational art project inspired by Dr. King in the FIA Art School from 4:00p-5:00p.

**The FIA galleries open  
at 10:00a, with all  
activities free and  
open to the public.**



## Free Glassblowing Demonstrations

Join us every Saturday and Sunday for free glassblowing demonstrations thanks to McLaren Health Care. Demonstrations are held in the Art School's state-of-the-art hot shop and begin on the hour 11a-4p on Saturdays and are ongoing 1p-4p on Sundays.

*Glassblowing  
Demonstrations  
are free thanks to*

**McLaren**  
HEALTH CARE





Art à la Carte is a series of informative programs focusing on the arts. It is offered **free of charge** on Wednesdays at 12:15p. Participants are encouraged to bring lunch or pick up something from The Palette Café. Coffee, tea, and cookies are provided. All programs are held in the FIA's Isabel Hall unless otherwise noted.

Art à la Carte Sponsors

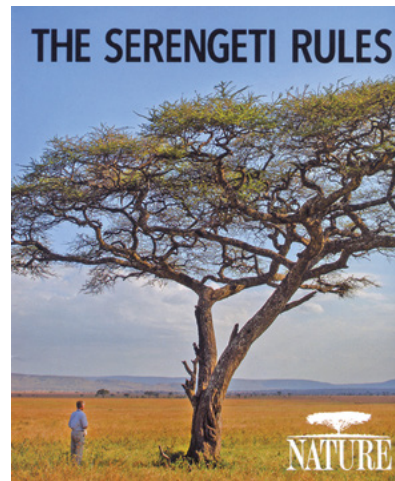
Merkley-Elderly  
Charitable Trust

**WCMU**  
PUBLIC MEDIA

January 5

### The Serengeti Rules

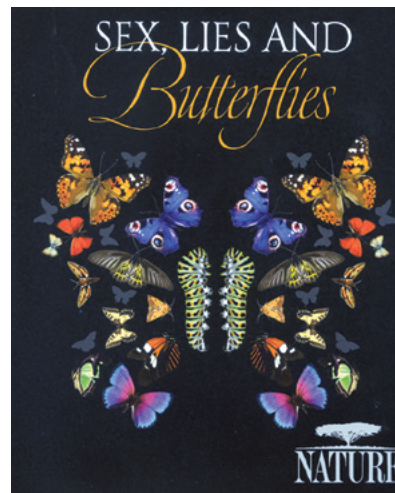
Immersed in some of the most remote and spectacular places on Earth, a small band of scientists discovered a single set of rules that govern all life. Now these unsung heroes share the stories of their adventures, reveal how their work flipped our view of nature on its head, and give us a chance to reimagine the world. *60 min.*



January 12

### Undercover in the Jungle

Follow a team of naturalists and wildlife filmmakers on a revolutionary mission to install a network of 50 remotely operated cameras in order to capture the intimate lives of the wildlife. *60 min.*



January 19

### Super Hummingbirds

With high-speed camerawork and breakthrough new science, we enter the fast-paced world of hummingbirds as never before. *60 min.*



January 26

### Sex, Lies and Butterflies

Butterflies have been flying around our planet for over 50 million years, and today around 20,000 different species inhabit the globe. From egg to caterpillar to chrysalis to the winged insect, we follow the life stages of butterflies. *53 min.*

February 2

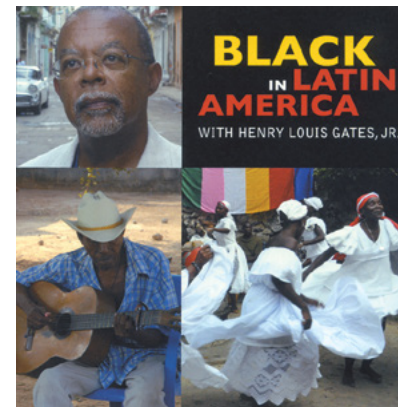
### Circle Unbroken

The Gullah culture is most popularly portrayed by its influence in language, food, art, music, religion and storytelling, with the underlying message that the lessons of the past must never be forgotten. *55 min.*

February 9

### Black is the Color

Today's program highlights key moments in the history of African American visual art, from Edmonia Lewis's 1867 sculpture *Forever Free*, to the work of contemporary artists such as Whitfield Lovell, Kerry James Marshall, Ellen Gallagher, and Jean-Michel Basquiat. *52 min.*



February 16

### Black in Latin America: Cuba

Professor Henry Louis Gates Jr. explores race and identity in Cuba. *60 min.*

February 23

### The Massachusetts 54th Colored Infantry

For additional  
information on  
Education programming,  
contact the Education  
Department at  
810.237.7314 or  
education@flintarts.org.

FIA book discussions focus on works of fiction and non-fiction related to art, art museums, or FIA collections. The first meeting for each book sets the stage by exploring artists and artwork related to the selected book. Two weeks later, the book is discussed. These **free programs** are offered on Wednesdays at 1:30p in Isabel Hall.

## Where the Crawdads Sing

By Delia Owens

Part 1: Art History Presentation

January 19 • 1:30p

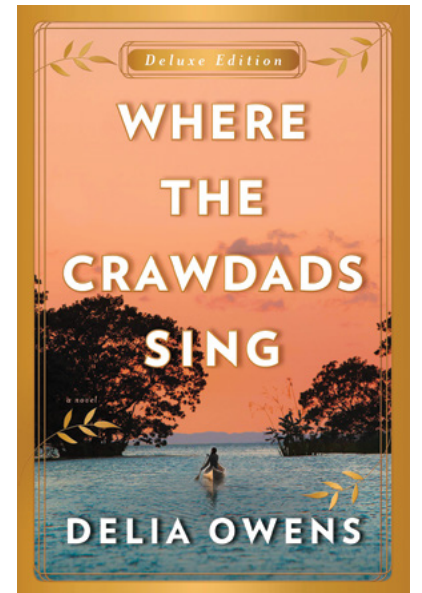
Part 2: Book Discussion

February 2 • 1:30p

Book is  
available in  
the Museum  
Shop

For years, rumors of the "Marsh Girl" have haunted Barkley Cove, a quiet town on the North Carolina coast. So in late 1969, when handsome Chase Andrews is found dead, the locals immediately suspect Kya Clark, the so-called Marsh Girl. But Kya is not what they say. Sensitive and intelligent, she has survived for years alone in the marsh that she calls home, finding friends in the gulls and lessons in the sand. Then the time comes when she yearns to be touched and loved. When two young men from town become intrigued by her wild beauty, Kya opens herself to a new life—until the unthinkable happens.

*Where the Crawdads Sing* is at once an exquisite ode to the natural world, a heartbreaking coming-of-age story, and a surprising tale of possible murder. Delia Owens reminds us that we are forever shaped by the children we once were, and that we are all subject to the beautiful and violent secrets that nature keeps.





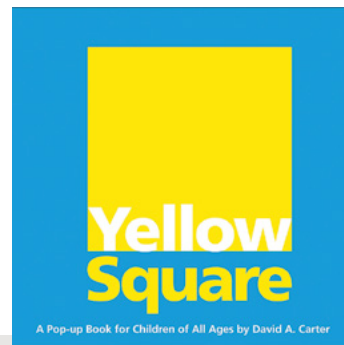
## TODDLER ART EXPLORERS

11:00a-11:45a • Studio 1 • Free of charge

January 7

**Exploring Squares**

Listen to the story *Yellow Square* by David Carter, hunt for artworks with squares in the galleries and turn squares in your own artwork in the studio.



February 4

**Exploring Black and White**

This month, listen to the story *Black Cat, White Cat* by Silvia Borando, look for the colors black and white in the galleries and explore black and white paint in the studio.



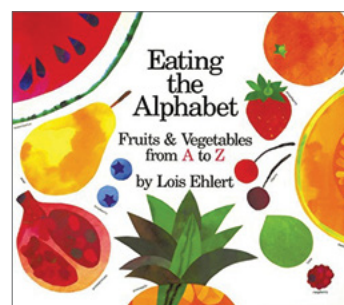
## PRESCHOOL PLAYDATES

11:00a-11:45a • Studio 1 • Free of charge

January 21

**Favorite Foods**

Listen to *Eating the Alphabet* by Lois Ehlert, look for artworks with food in the galleries and make our favorite foods out of clay in the studio.



February 18

**Animal Art**

This month, listen to *Brown Bear, Brown Bear, What Do You See?* by Bill Martin Jr. and Eric Carle, look at animal artworks in the galleries and create our own animal artworks in the studio.



Introduce your little one to the world of art! Playdates at the FIA include listening to a storybook, looking at artwork in the galleries, and exploring a range of art-making materials in the studio. Recommended for ages 3-5, but all are welcome.

## PRESENTATION

Coffee with a Curator is a focused, theme-oriented presentation on a variety of topics related to the FIA's permanent collection and special exhibitions. The talk is presented by one of the FIA's curators or an invited speaker. Coffee will be served. Time will follow each talk for questions or gallery exploration.

Sponsored by  
**BIGGBY**  
COFFEE  
3093 S Linden Rd  
Flint, MI



Complimentary  
Admission

January 10

10:30a-11:30a • Isabel Hall

**The Streets of Paris**

At the end of the 19th century, Paris thrived as the arts and culture capital of the world. The Eiffel Tower was built, the Moulin Rouge opened, and the streets were teeming with artists who were drawn to the city for artistic inspiration. This talk by Assistant Curator Rachael Holstege will take a closer look at artworks in the museum's collection featuring scenes of Paris, and will offer a glimpse into the city at the turn of the century.



Lucien Pissarro  
French, 1863-1944  
*Saint Vincent Street, Winter Sun*, 1890  
Oil on canvas  
25 3/4 x 32 inches  
Gift of The Whiting Foundation through Donald E. Johnson, 1979.201

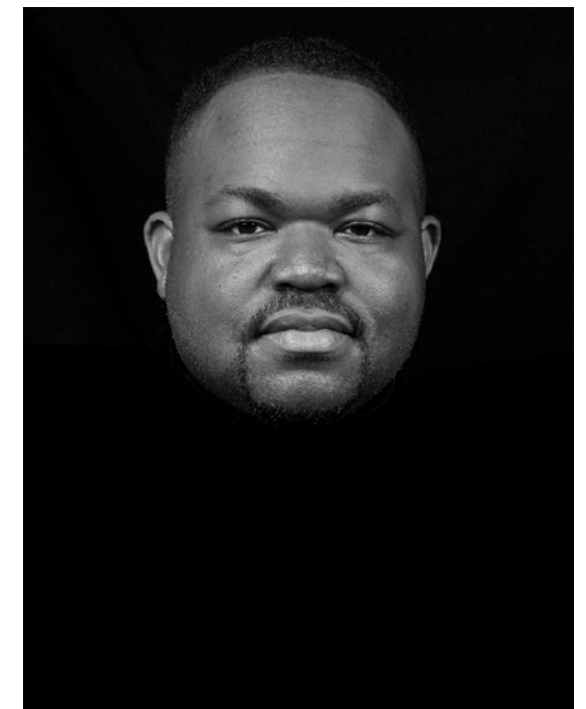
Jerry Taliaferro  
American, born 1953  
*Dondré D. Young*, 2021  
Digital print  
16 x 12 inches  
2021.175

February 14

10:30a-11:30a • Isabel Hall

**Sons: Seeing the Modern African American Male: An Inside Look at the Exhibition**

Associate Curator Sarah Kohn and Assistant Curator Rachael Holstege will discuss the concept of the *Sons* exhibition, give an overview of the nomination and selection process, share behind the scenes footage of the installation, and end with a tour of the exhibition.





## New Archaeological Evidence for the Biblical Kingdom of David

January 11 • 6:00p  
FIA Theater

**Dr. Michael Pytlik**  
Guest Lecturer

Oakland University, in partnership with Hebrew University of Jerusalem, has conducted field excavations at the ancient site of Khirbet Qeiyafa, or Biblical Sha'arayim. The project was devoted to a regional assessment of the early Judean monarch (circa the early 10th century BCE) over 11 field seasons. This and other sites recently excavated, revealed for the first time archaeological data about the kingdom from the time of King David. This site revealed details about ancient Israel from the time of David, including biblical religion, daily life, the ancient diet, socio-political details, and more. This talk will discuss why the site was selected for excavation, the exciting finds, and the scope and reach of the kingdom associated with the historical kingdom of David.

Dr. Michael Pytlik is Adjunct Assistant Professor in Anthropology and Religion and the Director of Jewish Studies at Oakland University. He has excavated a number of biblical and more recent sites in Israel, and takes students from Oakland to Israel each year on excavations. Dr. Pytlik has a Bachelor's degree in History and Philosophy, a Master in Jewish Studies, and a Doctorate in Jewish Studies from Spertus College of Judaic Studies and Leadership, Chicago. His area of study was historical and theological questions relating to the early Israelite monarchy at the time of King David. He teaches courses in the Archaeology of Israel, Archaeology of Sacred Sites, Jewish History, Theology, Religion and Culture, and World Religions.



Dr. Michael Pytlik



Aerial view of ancient site of Khirbet Qeiyafa

Complimentary Admission



*The Sheppy Dog Fund Lecture has been established to address the topics of art, religion, and history, and is funded annually by The Sheppy Dog Fund, Dr. Alan Klein, Advisor.*



## Shady Ladies of the Metropolitan Museum

February 9 • 6:00p  
FIA Theater

**Andrew Lear**  
Guest Lecturer



Andrew Lear

Many elegant ladies hang on the walls of museums like the Metropolitan Museum of Art (the Met). And you might imagine that they are all princesses and duchesses. In fact, however, many of them are royal mistresses and courtesans—categories of women who are now almost forgotten but who had considerable importance in many historical societies, from classical Athens to Edo Period Japan, to Belle Epoque Paris. In this lecture, you will learn about their complicated lives, their social roles, and about their importance to the art of several cultures—all through their appearances in the Met's collections.

Andrew Lear is a world expert on gender and sexuality in the Classical world, particularly in art and poetry. His *Images of Ancient Greek Pederasty* has been called a classic in the field of iconography. During his academic career, he taught at Columbia University, Pomona College, and NYU. In retirement, he founded two tour companies, both based at the Metropolitan Museum of Art: Oscar Wilde Tours, focused on LGBT+ history, and Shady Ladies Tours, focused on women's history. He is also working with author and actor Stephen Fry on a TV series about the "Scandals and Secrets of London's National Portrait Gallery."

**Thomas Gainsborough**  
British, Sudbury 1727-1788 London  
**Mrs. Grace Dalrymple Elliott**  
(1754?-1823), 1778  
Oil on canvas  
92 ¼ x 60 ½ inches  
Bequest of William K. Vanderbilt,  
1920, 20.155.1  
Metropolitan Museum of Art

PALETTE  
Café



## Hot Chocolate

Warm up with one of our divine Ghirardelli hot chocolates! Make it extra special and spike it with Baileys, Godiva Chocolate Liqueur, Frangelico or Kahlua.

FIA members receive 10% off.

**Hours:** Mon-Fri, 9a-5p\*; Sat, 10a-5p\*; Sun, 1p-5p

\*The Palette Café is open extended hours for select special events.



**1 SAT**

**Closed**  
**Holiday**  
New Year's Day

**5 WED**

12:15p  
**Art à la Carte**  
*The Serengeti Rules*

**7 FRI**

7:30p  
**FOMA Film**  
*Kurt Vonnegut: Unstuck in Time*

**8 SAT**

7:30p  
**FOMA Film**  
*Kurt Vonnegut: Unstuck in Time*

**9 SUN**

2:00p  
**FOMA Film**  
*Kurt Vonnegut: Unstuck in Time*

**10 MON**

10:30a  
**Coffee with a Curator**  
*The Streets of Paris*

**11 TUE**

6:00p  
**The Sheppy Dog Fund Lecture**  
*New Archaeological Evidence for the Biblical Kingdom of David*

**12 WED**

12:15p  
**Art à la Carte**  
*Undercover in the Jungle*

**13 THU**

7:00p  
**Special Film Screening**  
*Finding Fellowship*

**14 FRI**

7:30p  
**FOMA Film**  
*I'm Your Man*

**15 SAT**

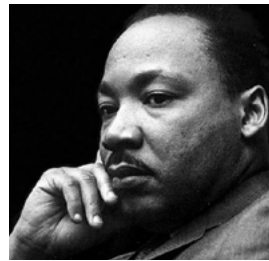
10:00a  
**Exhibition Opening**  
*Drawing from Life: Ed Watkins*  
7:30p  
**FOMA Film**  
*I'm Your Man*

**16 SUN**

2:00p  
**FOMA Film**  
*I'm Your Man*

**17 MON**

2:00p  
**Family Activity**  
*Martin Luther King Jr. Day*

**19 WED**

12:15p  
**Art à la Carte**  
*Super Hummingbird*  
1:30p  
**Book Discussion: Part One**  
*Where the Crawdads Sing*

**21 FRI**

7:30p  
**FOMA Film**  
*Bergman Island*

**22 SAT**

6:00p  
**Community Gala**  
*Sons: Seeing the Modern African American Male*  
7:30p  
**FOMA Film**  
*Bergman Island*

**23 SUN**

10:00a  
**Exhibition Opening**  
*Sons: Seeing the Modern African American Male*  
2:00p  
**Meet the Artist**  
*Jerry Taliaferro*  
2:00p  
**FOMA Film**  
*Bergman Island*

**26 WED**

12:15p  
**Art à la Carte**  
*Sex, Lies and Butterflies*

**28 FRI**

7:30p  
**FOMA Film**  
*Blue Bayou*

**29 SAT**

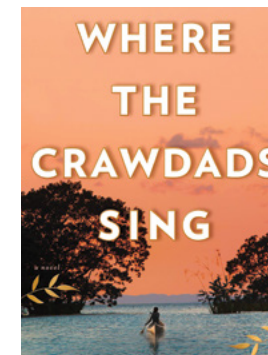
7:30p  
**FOMA Film**  
*Blue Bayou*

**30 SUN**

2:00p  
**FOMA Film**  
*Blue Bayou*

**2 WED**

12:15p  
**Art à la Carte**  
*Circle Unbroken*  
1:30p  
**Book Discussion: Part Two**  
*Where the Crawdads Sing*

**4 FRI**

7:30p  
**FOMA Film**  
*Ailey*

**5 SAT**

7:30p  
**FOMA Film**  
*Ailey*

**6 SUN**

2:00p  
**FOMA Film**  
*Ailey*

**9 WED**

12:15p  
**Art à la Carte**  
*Black is the Color*  
6:00p  
**The Sheppy Dog Fund Lecture**  
*Shady Ladies of the Metropolitan Museum*

**10 THU**

7:00p  
**Special Film Screening**  
*Black Art: In the Absence of Light*

**11 FRI**

7:30p  
**FOMA Film**  
*Catch the Fair One*

**12 SAT**

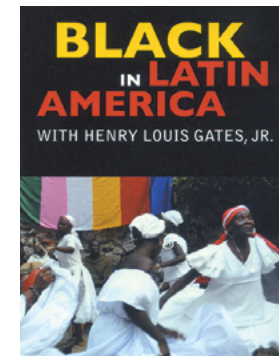
7:30p  
**FOMA Film**  
*Catch the Fair One*

**13 SUN**

2:00p  
**FOMA Film**  
*Catch the Fair One*

**14 MON**

10:30a  
**Coffee with a Curator**  
*Sons: Seeing the Modern African American Male: An Inside Look at the Exhibition*

**16 WED**

12:15p  
**Art à la Carte**  
*Black in Latin America: Cuba*

**18 FRI**

7:30p  
**FOMA Film**  
*The First Wave*

**19 SAT**

2:00p  
**Artist Talk**  
*Ed Watkins*  
7:30p  
**FOMA Film**  
*The First Wave*

**20 SUN**

2:00p  
**FOMA Film**  
*The First Wave*

**23 WED**

12:15p  
**Art à la Carte**  
*The Massachusetts 54th Colored Infantry*

**25 FRI**

7:30p  
**FOMA Film**  
*The Man Who Sold His Skin*

**26 SAT**

7:30p  
**FOMA Film**  
*The Man Who Sold His Skin*

**27 SUN**

2:00p  
**FOMA Film**  
*The Man Who Sold His Skin*



Chakaia Booker

Each year, the Flint Print Club commissions an artist to produce a print to augment both the FIA's collection and the pursuit of personal collecting. The club is limited to 100 members in good standing at the Family level or above. Flint Print Club dues are \$250 annually, which provides each participating member with a selected print and related programs. The club currently reaches members in 16 states across the country and arrangements can be made to ship the print to any of the 50 states.

Chakaia Booker is the artist of the 2020-21 commissioned print. Residing in New York, Booker is an internationally renowned and widely collected American sculptor known for her large-scale works made from discarded tires, which are cut, looped, layered, and reassembled. She has exhibited in over 150 solo and group exhibitions across the United States, Europe, Africa, and Asia and is included in

Chakaia Booker  
American, born 1953  
*Untitled (CB. 1.21)*, 2021  
Lithograph and chine collé  
on embossed paper  
21 x 14 inches



more than 40 public collections. She was selected for the 2000 Whitney Biennial and received a Guggenheim Fellowship in 2005.

Applying her experience of transforming materials into sculptural works, Booker takes the same approach to constructing works on paper. She cuts, tears, and layers paper to create new patterns, dynamic and abstract. Using *chine collé*—a technique in which an image is transferred to a lightweight paper and simultaneously bonded to a heavier paper during printing—allows Booker to “build” her image in a similar way that she would if she were sculpting. The FIA Print Club print features additional shapes with the artist using an embossing process, which adds an even more sculptural reference to the overall print.

You can learn more about the artist and her work on her website at [chakaiabooker.com](http://chakaiabooker.com).



Chakaia Booker  
American, born 1953  
*India Blue*, 2001  
Rubber tires and wood  
73 x 43 x 38 inches  
Bequest of Russell J. Cameron, by exchange, and partial gift from the Friends of Modern Art, 2002.11



The FIA's Youth Membership is a fun way for children ages 2.5-12 to learn about art and create their own. This year's theme focuses on works of art in the FIA's collection that feature animals. Youth members may select a stuffed animal that is theirs to keep. Art activities are included. Membership dues are \$20 for the first child and \$10 for each additional child.

Youth membership sponsored by  
**Halo BURGER**



Youth Activity  
**January 22**  
**1:30p-4:00p • Studio 1**

Animal Shakers

Clay is a favorite medium for Youth Members and our galleries have many examples of animals depicted with clay. In the studio, young artists will create shakers based upon their animals.

MEMBERSHIP

MEMBERSHIP

Yes, I want to be a member of the Flint Print Club 2020-2021 for the Chakaia Booker print.

Membership Information

Circle: Dr. Mr. Mrs. Ms. Miss

Name \_\_\_\_\_

Address \_\_\_\_\_

City \_\_\_\_\_ State \_\_\_\_\_ Zip \_\_\_\_\_

Phone \_\_\_\_\_ Email \_\_\_\_\_

Methods of Payment

☐ Check payable to "Flint Print Club" ☐ Visa ☐ MasterCard ☐ Discover ☐ AMEX

Acct. # \_\_\_\_\_ CV# \_\_\_\_\_

Exp. Date \_\_\_\_\_ Signature \_\_\_\_\_

☐ I am currently an FIA member at the \$50 level or higher (see page 26 for levels).

☐ I would like to upgrade my membership or join the FIA at the \$50 level or higher with an additional:  
\$ \_\_\_\_\_

+ \$250.00 Flint Print Club dues

= \$ \_\_\_\_\_

Total Payment



Membership contributions are a significant part of the FIA operating income.

**Benefits and privileges of FIA membership include** a 10% discount in the Museum Shop and The Palette Café; a 20% discount and early registration privileges on Art School classes; discounts on ticketed events; free admission to exhibitions; invitations to opening receptions, lectures, and special events; *FIA Magazine* subscription; recognition in the *FIA Magazine* and Annual Report and inclusion in two reciprocal membership programs for members at the \$100 level and above.

**Rubens Society Members** are individuals and businesses supporting FIA membership at the \$1,500 level and higher and are invited to three exclusive events each year.

Levels

<b>Youth</b> (2.5-12).....	\$20	†	2 adults
<b>Student</b> (13 to college)....	\$20	††	2 adults + children 18 & under
<b>Individual</b> .....	\$30		
<b>Dual</b> <sup>†</sup> .....	\$40		
<b>Family</b> <sup>††</sup> .....	\$50	★	An asterisk indicates the names of those who have upgraded their memberships with a larger contribution.
<b>Sustainer</b> <sup>††</sup> .....	\$100		
<b>Sponsor</b> <sup>††</sup> .....	\$250		
<b>Donor</b> <sup>††</sup> .....	\$500	+	A plus indicates the names of Friends of Modern Art (FOMA) members.
<b>Rubens Society</b> <sup>††</sup> .....	\$1,500+	Δ	A triangle indicates the names of Founders Society members.

Members who have joined from 9.16.21 - 11.9.21

Individual Members

- Sponsor**  
(\$250 annually)  
Ms. Maureen Collins
- Sustainer**  
(\$100 annually)  
Ms. Lorraine Callis & Mr. Mark Siegel  
Mr. & Mrs. Matthew Hein  
Mrs. Stashia Miller  
Mrs. Rebecca Napier+
- Family**  
(\$50 annually)  
Mr. & Mrs. Michael Ahearne  
Mr. & Mrs. Mark Alexander  
Mr. & Mrs. Aron Baase  
Mrs. Katie Bellamy  
Mrs. Stephanie Bender  
Ms. Bella May Berger  
Mr. & Mrs. Andrew Carle  
Mrs. Kalie Carlton  
Mr. & Mrs. Larry Christian  
Mrs. Carrie Church  
Mrs. Carmen Cosgrove  
Ms. Sarah Courneya  
Mr. & Mrs. Darel Crochran  
Mr. & Mrs. John Cumming  
Ms. Katie Curnow  
Mrs. Heidi Dodge  
Mr. Ryan S. Ellis  
Ms. Cheyenne Fykes  
Miss Brooke Ginsham  
Ms. Tiffany Given  
Mr. Ryan Gonder & Mrs. Holly Rosser  
Ms. Natasha Griffin & Mr. Dequann Horn  
Mr. & Mrs. Michael Griffin  
Mr. Kirk Hansen  
Mr. Patrick Hayes & Ms. Rhiannon Hargland  
Mr. Eric Hendley & Ms. Heather Baldwin  
Mr. & Mrs. Michael Hillis  
Mr. Christian Howd  
Mr. & Mrs. Kyle Hurst  
Ms. Tamara Ivey  
Ms. LeAnn Jacobs  
Mrs. Kari Johnston  
Ms. Katie Kiacz  
Ms. Marla Knight  
Mrs. Lauren Kondrat  
Mr. & Mrs. David Lathangue  
Mr. Alex Lenear  
Mr. Tony Lesperance  
Mrs. Cindy Long  
Mr. Donald Mansberry  
Ms. Beth Martin & Ms. Michelle Dewilde  
Ms. Kim Martin  
Mrs. Lynette Maybee  
Mrs. Janet McVannel  
Dr. & Mrs. Ramesh Misra  
Ms. Ashley Mundale  
Ms. Mary Nolan  
Mr. & Mrs. Jeremy Perrault

- Mrs. Lisa Richards & Mr. Christopher Perry  
Mr. Jordan Robinson  
Ms. Kimberly Rodela  
Ms. Dionna Ross  
Mrs. JoAnn Sandlin  
Dr. & Mrs. Bhagwan D. Sayal  
Mrs. Bethany Severn  
Mr. & Mrs. Michael Starr  
Mrs. Tiffany Sudia  
Mrs. Carrie Swanson & Mrs. Michelle Swanson  
Mrs. Maryalice Taneyhill  
Mr. Matthew Taylor  
Mrs. Courtney Thayer  
Mrs. Teresa Upcraft  
Ms. Stacey L. Wagner  
Mr. & Mrs. Arthur Weiss  
Mr. & Mrs. Kevin West  
Mrs. Kate White  
Mrs. Bridgette Williams  
Mrs. Laura Yeaster  
Ms. Terry Zalewski
- Dual**  
(\$40 annually)  
Ms. Carly Aldridge & Mr. Steve Hemric  
Mr. Asa Ascenscio-Zuccaro & Ms. Mildred Ascenscio-Zuccaro  
Mrs. Terry Basmadjian  
Ms. Elizabeth M. Beaubien & Mr. Nick Pugliese  
Ms. Diana Curson  
Ms. Grace Marlowe & Ms. Judith VanMeter  
Ms. Natalie Masha  
Mr. & Mrs. Spencer Minns  
Ms. Jane Schafer  
Mr. & Mrs. Carey Scheberle  
Mr. Josh Wood & Ms. Andrea Hunter  
Ms. Everyl Yankee & Mr. Stanford Bolt
- Individual**  
(\$30 annually)  
Mr. Joshua Adedeji  
Mrs. Lori Amos  
Ms. Melisa Baughman  
Mr. Stephen Brennan  
Ms. Amber Cray  
Mr. Rodney Crow  
Ms. Hannah Ferguson  
Ms. Sherri Frame+Δ  
Ms. Suzi Jamrog  
Ms. Victoria J. Jendretzke  
Ms. Nova Jennings  
Ms. Tonya Ketzler  
Mrs. Elizabeth Kusky  
Ms. Sonya Lapak  
Ms. Diane Laurens  
Mrs. Margaret Magness  
Ms. Katherine E. Major  
Mr. Erwin McKone  
Ms. Teresa Mills  
Ms. Stephanie Sain  
Ms. Cindi Satoria McBroom  
Mr. Paul Schall  
Ms. Angela Schroeder  
Ms. Brooke Sebok  
Mr. Michael Thompson  
Ms. Mady Tissenbaum

- Mr. Jeff Walker  
Mr. Nicholas Wilkerson
- Student**  
(\$20 annually)  
Miss Hailey Gawne
- Youth**  
(\$20 annually)  
Kiyra Irwin
- Members who have renewed from 9.16.21 - 11.9.21**
- Rubens Society**
- Business**  
(\$1,500 & above annually)  
3Sixty Interactive\*
- Individual**  
(\$1,500 & above annually)  
Mr. Carroll G. Baker & Ms. Kimberly Roberson+Δ  
Mr. & Mrs. F. James Cummins+  
Mr. Dallas Dort & Mrs. Sharon A. Peterson Dort  
Mr. James R. Kettler  
Mr. & Mrs. Madhu Kulkarni  
Dr. Jamile T. Lawand & Mr. Barry J. Carr+Δ  
Mr. Max Lepler & Mr. Rex L. Dotson  
Mr. & Mrs. Thomas B. Lillie\*  
Mr. & Mrs. John Lindholm  
Dr. & Mrs. Robert McMahan  
Mr. & Mrs. William H. Moeller  
Dr. & Mrs. Kienan F. Murphy+Δ  
Mr. Patrick Murray & Mr. James Edwards+Δ  
Mr. & Mrs. Victor Rabinkov+Δ  
Mr. Gary Reetz & Mrs. Barb Stone Reetz\*  
Dr. & Mrs. Daniel J. Ryan+  
Mrs. Betty Salimi+Δ  
Dr. & Mrs. Jay A. Werschky+Δ
- Business Members**
- Business Supporter**  
(\$250 annually)  
Artpack Services, Inc.  
John K. Costa, AIA Architectural Design & Consultation PLLC  
Skaff Carpet & Furniture Co.
- Business Supporter**  
(\$100 annually)  
Bishop International Airport Authority  
Geriatric & Medical Specialists of MI  
Atty. Matthew L. Norwood  
PNC Institutional Investments  
University of Michigan - Flint  
Woodhaven Senior Community  
Yeo & Yeo, P.C., CPA
- Individual Members**
- Donor**  
(\$500 annually)  
Mr. & Mrs. David F. Barbour+Δ

- Mr. & Mrs. Sheldon Cohn  
Mrs. Agape Kallis\*  
Byron & Margie Latter+  
**Sponsor**  
(\$250 annually)  
Dr. & Mrs. Mehmet Agabigum\*  
Mr. Al Barron & Ms. Cindy Gunn\*  
Lt. Gov. John D. Cherry & Hon. Pamela M. Faris+Δ  
Ms. Susan Davies & Mr. Tim Broderick  
Mr. Thomas Edelen+  
Dr. & Mrs. Cyrus Farrehi+Δ  
Mr. & Mrs. John Fey  
Mr. & Mrs. Christopher Iden+Δ  
Miss Aya Sofya Lamielle\*  
Miss Mackenzie Naffziger  
Ms. Christa M. Siegel+Δ  
Mr. & Mrs. Charles F. Wagonlander
- Sustainer**  
(\$100 annually)  
Mr. & Mrs. Bill Anderson\*  
Mr. & Ms. Willie E. Artis  
Ms. Frances L. Ascencio\*+  
Mr. & Mrs. William Bajcz  
Ms. Darlene P. Benore & Ms. Jackie Moon  
Mr. & Mrs. James Boles  
Mr. & Mrs. Donald A. Bomeli+Δ  
Ms. Dolores Borrow  
Mr. & Mrs. Dickson Brown  
Ms. Heather Burnash & Mr. Marcus Randolph  
Mr. & Mrs. Adam Carlson+Δ  
Mr. & Mrs. Bruce T. ColasantiΔ  
Samuel & Darylee Coplin+Δ  
Ms. Denise DeCubber+  
Mr. & Mrs. Chris J. Dundas+Δ  
Mr. & Mrs. Harvey Eisman\*+Δ  
Mrs. Lila Esfahani  
Ms. Kristin Fontichiaro  
Ms. Carole Fults & Ms. Debra Burger  
Mr. John R. Gazall  
Mr. & Mrs. Mike Gorris\*  
Mr. Mark Hamel & Mr. Mike Green  
Ms. JoAnne Hatto+  
Ms. Dawn Hibbard & Mr. Ray Rust+  
Mr. & Mrs. Py Hockin  
Ms. Barbara H. Horcha & Mr. William Cross+Δ  
Mr. & Mrs. Daniel Kelly  
Mr. & Mrs. Brian Killian  
Mr. & Mrs. Melvin Kipp  
Ms. Diane Kwitoski+  
Ms. Carol S. Lacca+Δ  
Ms. Carole LaMantia  
Mr. Lawrence N. Larson  
Ms. Kathy Liggett  
Mr. Alvern Lock & Mrs. Theresa Stephens-Lock  
Mrs. Judy Ann Lowrie  
Ms. Denise M. Lucas+Δ  
Sean & Eureka McCormick+Δ  
Mr. James McEwan  
Mr. & Mrs. Robert D. Mills  
Mr. & Mrs. Guy K. Moxam  
Mr. & Mrs. Tom Moylan

- Mr. & Mrs. Jon Northrup+  
Dr. & Mrs. James Owen  
Ms. Roberta S. Patt & Mr. Fred Fechheimer  
Ms. Jeanne Pepper & Mr. Thomas Herman+Δ  
Mr. & Mrs. Vincent Pfaff+Δ  
Ms. Helen Philpott  
Mr. & Mrs. Curtis Pollack+  
Mr. Joshua Pope & Hua Bai  
Jane & James Richardson  
Mr. & Mrs. Douglas Ricketts  
Mr. & Mrs. Alan Rohde\*  
Mr. & Mrs. Charles Rudduck  
Mr. Marshall H. Sanders & Dr. Sharon A. Simeon+Δ  
Mrs. Amina Sayyid  
Mrs. Marsha Schmit\*  
Ms. Janet A. Schultz+Δ  
Dr. James Scott & Ms. Diane Piontkowski  
Mrs. Mary Shumsky  
Mr. & Mrs. William Swanson  
Dr. & Mrs. Johannes Tall  
Mr. Charles Tobias  
Ms. Donna L. Ullrich+Δ  
Ms. Judith Vertalka  
Mr. Harry Walters  
Mrs. Janet Warren & Mr. Harold Marks  
Mr. & Mrs. William J. Wishart+  
Mr. & Mrs. Ron Wurst  
Mr. & Mrs. Paul Ytterock  
Mr. Mike D. Smith & Ms. Trish M. Zito-Smith+Δ
- Family**  
(\$50 annually)  
Mr. & Mrs. Monis Ahsan  
Mr. & Mrs. Bruce Beals  
Mr. & Mrs. Richard Beauchamp  
Mrs. Patricia Beauvais & Mr. Allan Wells  
Mrs. Julie Boylan\*  
Mr. Ronald Bruhn & Ms. Suzanne Bruhn  
Mr. Jeffrey Dominguez\*  
Ms. Vishaun Ezell  
Mr. & Mrs. Scott Finch  
Ms. Pam Folts & Ms. Sherry Johnston  
Mrs. Carolyn Goetz  
Mr. & Mrs. John Hillman  
Mr. & Mrs. William A. Karas II\*  
Ms. Lisa M. Land\*  
Mr. & Mrs. Gary Latimore  
Mr. Paul A. Lazar & Ms. Susan P. Kirby+  
Mr. & Mrs. Rod LittleΔ  
Dr. & Mrs. John Love\*  
Mr. & Mrs. Jonathan Nigrine  
Mr. & Mrs. Matthew Osmon  
Mr. Dan Zalewski & Mrs. Joetta Pyles-Zalewski  
Mr. & Mrs. Robert W. Ranta\*+  
Mr. & Mrs. Robert Romanowski  
Ms. Susan Ross  
Dr. & Mrs. Terence Ross  
Mr. & Mrs. Jeff Rowe  
Mr. & Mrs. Douglas C. Swanson  
Dr. Colleen Turner & Mr. Roger Turner  
Ms. LeAnn Underhill  
Mr. & Mrs. Joseph Wolf



**Dual**  
(\$40 annually)  
Drs. Paul & Barbara Adams  
Ms. Monica BrownΔ  
Ms. Peggy Brunner  
Mr. & Mrs. James Burke  
Ms. Janice Child & Mr. Mitchel Stutes  
Ms. Abigail I. Chou & Mr. William Crawford  
Ms. Molly Dallaire & Ms. Symantha Foreman  
Mr. & Mrs. Skip Davis  
Mr. & Mrs. Stuart Davis  
Ms. Laurie Dexter & Ms. Patricia Wilson  
Mr. William Dwyer & Ms. Robin Sapienza  
Mr. & Mrs. Les Frazee  
Mr. & Mrs. Lawrence Hackett  
Mr. James Hansen\*  
Mr. Shawn Holliday & Ms. Dianna Brinkman\*  
Mr. & Mrs. Ronald M. Horton+Δ  
Ms. Paula Janda & Ms. Marlena Janda\*  
Mr. & Mrs. Patrick Keavy  
Mr. & Mrs. Dennis Kingsley  
Mr. & Mrs. Rick Legleitner  
Mr. & Mrs. Ron Meeker  
Ms. Rochelle Molyneaux\*  
Mr. & Mrs. Patrick Myers  
Mr. & Mrs. Kurt Neiswender  
Mr. & Mrs. David Odett  
Mr. & Mrs. Lawrence Paolucci  
Mr. & Mrs. Edward J. Preville

Mr. & Mrs. Dale Rice  
Mr. & Mrs. Richard J. RuhalaΔ  
Mr. & Mrs. David J. Simoni  
Ms. M. Zoe Starkweather & Mr. Charles Riley+Δ  
Mr. Scott Stensaas\*  
Ms. Patrice Stiehl  
Ms. & Ms. Lynda Suciū  
**Individual**  
(\$30 annually)  
Ms. Leslie Acevedo  
Mr. Guy Adamec  
Ms. Annette Adams  
Ms. Judith Alexander+Δ  
Ms. Kelly Atherton  
Mrs. Julie August  
Ms. Ruthann Bajorek  
Ms. Ellen Barrett  
Ms. Linda Bedtelyon  
Mrs. Sandra Berra  
Dr. Lynn Boyer  
Miss Dara Bukoffsky\*  
Ms. Tamera Burgess+  
Ms. Lois CallanΔ  
Ms. Janet Cameron+  
Ms. Debbie Campbell+Δ  
Miss Anne Cole  
Mrs. Margaret A. Daly  
Ms. Susan A. Damone  
Mrs. Sharon Dark  
Stephanie Dean  
Ms. Betty L. Dell  
Ms. Daiva Devereaux  
Mrs. Beverly J. Dillon  
Ms. Kathleen Docket+

Mrs. Donna Dodds Hamm+Δ  
Mrs. Kimberly Donahue+  
Mr. George Ensinger  
Ms. Ida L. Epstein+  
Ms. Nancy Epstein+Δ  
Mr. Todd Ferguson  
Ms. Bonnie Ferguson  
Mrs. Billie Fisher+Δ  
Dr. Colleen G. Ford+Δ  
Mr. Donald F. Fournier  
Ms. Emma Frownfelter  
Mrs. Kelly Gagliardo  
Ms. Mary Gartland  
Ms. Patricia GebhardtΔ  
Ms. Mary Gleason  
Ms. Janet Gray  
Ms. Sheila Grennay  
Mr. Paul F. Hauth  
Ms. Carol Higgins  
Ms. Donna Hines  
Mrs. Barbara Hotary  
Ms. Renee Jobbitt  
Ms. Mollie Jones-Kotula  
Ms. Jane Kelly  
Ms. Irene Knop  
Mr. Tracy Krumm+  
Ms. Kerstin Lawrence  
Ms. Mary Lazar  
Mr. James T. Legacy  
Ms. Carol A. Lewin  
Ms. Elyse Lewis  
Ms. Donna M. Lloyd  
Ms. Melody Lumsden  
Ms. Barbara A. McGhan  
Ms. Ruth A. McLearn+  
Mrs. Elaine I. Moore+

Ms. Helen Mostek  
Ms. Lori Motley  
Mrs. Glenda Naffziger-Kniss  
Ms. Rachel Nagy\*  
Mr. Ulise Nedson+  
Ms. Betty Noonan  
Ms. Ruth A. O'Connell  
Ms. Orlene Peresta\*  
Ms. Linda Phillips+  
Ms. Mary Powell  
Mrs. Phyllis A. Powers  
Ms. Eleanor Pyles  
Mrs. Saroja N. ReddyΔ  
Ms. Shirley Reeve  
Ms. Lisa Reinert  
Mr. John Ridgeway  
Ms. Deborah Robertson  
Ms. Sally Ross  
Ms. Suzanne Rosser  
Ms. Debra RubeyΔ  
Ms. Reta Schafer+  
Ms. Mary Scheuer+  
Ms. Margaret Schmid  
Dr. Gerald Schneberger  
Ms. Linda Schwedt  
Dr. Ernestine R. Smith  
Ms. Berna S. Sorscher+  
Ms. Susanne Spiegel  
Mrs. Kelly L. Stein  
Mrs. Brenda Tainsky  
Mrs. Lynn VanAmburg  
Ms. Jane Voorheis\*  
Ms. Kady Yellow  
Miss Kathleen Zeilinger+  
Mrs. Mary Ann Ziegler

ENDOWMENT

The FIA Film Society Legacy Fund

A decade ago, the FIA established the Film Society. Membership in the society not only supports the Film Program, it offers its members reduced film ticket prices, an informative newsletter, pre-screenings, as well as recognition of support.

Recently, one of the founding members of the Society, Flint filmophile Linda Pylypiw, notified the FIA that she was establishing a planned gift from her estate to benefit the program. This discussion has led to the formation of the FIA Film Society Legacy Fund (FSLF). This endowment will help sustain the Film Program in perpetuity. Linda is giving a lead gift to start the fund and, in the future, when her bequest is realized, it will be added to the FSLF.

If you are a member of the Film Society or just love films and want to help ensure that the film program continues, please consider a contribution to the Film Society Legacy Fund. As the FSLF grows, it will yield dollars to sustain the affiliated costs of equipment and theater maintenance, personnel, security, and ensure that the FIA will always be the place to see great classics, foreign, alternative and independent films. Your contribution is 100% tax deductible and will help to preserve the program well into the future.

Yes, I want to donate to the Film Society Legacy Fund.

Contact Information

Circle: Dr. Mr. Mrs. Ms. Miss

Name

Address

City State Zip

Phone

Email

My Donation

Total Amount Enclosed \$

Payment plans are available by contacting Valarie Bailie at vbailie@flintarts.org or 810.234.1695.

Methods of Payment

- ☐ Check payable to Flint Institute of Arts
- ☐ Visa ☐ MasterCard ☐ Discover ☐ AMEX

Acct. # CV#

Exp. Date Signature



Be a Part of The Contemporaries!



Sponsor of The Contemporaries



For more information on The Contemporaries or to join, go to flintarts.org/join-and-give/the-contemporaries.



The Flint Institute of Arts gratefully acknowledges the generosity of the following donors who have supported the Institute with contributions.

**Gifts received from 9.16.21 - 11.9.21**

**Expansion Project Endowment Contributors**

Since 9.16.21 - 11.9.21

Anonymous  
Mr. Lawrence N. Larson  
Ms. Kerstin Lawrence  
Ms. Roberta S. Patt & Mr. Fred Fechheimer  
Dr. Jacquelyn Reinertson, theater seat purchase  
Mr. & Mrs. Paul Runyan, theater seat purchase

**Annual Appeal 2021**

Since 9.16.21 - 11.9.21

Ms. Denise Ahonen  
Mr. & Mrs. Timothy Allen  
Anonymous  
Dr. & Mrs. William D. Beck & Kristen  
Dr. Morley M. Biesman  
Dr. Cathy O. Blight & Mr. Edward B. Davison  
Mr. & Mrs. Nicholas Bozen  
Mrs. Edmund Brownell  
Mrs. Mary Coleman  
Ms. Sarah Courneya  
Mr. David Crawford  
Mr. & Mrs. Fred Cross  
Ms. Dorothy Gae Davis  
Ms. Claudia DeMonte & Mr. Ed McGowin  
Mrs. Beverly J. Dillon  
Mrs. Nancy Hagle-Duffy  
Mr. Ryan M. Eashoo & Mr. David Eashoo  
Mr. & Mrs. Ron Fitch  
Mr. & Mrs. Ed Fizell  
Dr. & Mrs. Melvin Flamenbaum  
Ms. Laura Friesen & Mr. Bruce Green  
Ms. Patricia Gebhardt  
Mr. Thomas M. Gervasi  
Mrs. Roberta L. Goergen  
Mrs. Carolyn Goetz  
Mrs. Bobbie J. Greer  
Mr. & Mrs. Colin Harrison  
Ms. Louise Hartwell & Ms. Kate Pickett  
Mr. & Mrs. Jack Hempel  
Ms. Annetta Hendrickson  
Mrs. Ernie Hermann  
Mr. Larry D. Howell  
Dr. Susumu Inoue  
Mr. James R. Kettler  
Mr. & Mrs. Norman Kleiner  
Mr. & Mrs. Mark L. Lippincott  
Mr. & Mrs. David S. McCredie  
Ms. Barbara Mirsky  
Mr. & Mrs. Alexander C. Murray  
Ms. Roberta S. Patt & Mr. Fred Fechheimer  
Ms. Jacqueline Piechowski  
Mr. Morton Potter, Jr.  
Ms. Frances J. Price  
Mr. & Mrs. A. Davison Rice

Ms. Sally Ross  
Mr. & Mrs. Paul Rozycki  
Mr. & Mrs. Greg Schnesck  
Ms. Suzanne M. Sennabaum  
Chuck & Kathryn Sharbaugh  
Dr. Janice Shimoda  
Mr. & Mrs. James Spangler  
Mr. & Mrs. Charles F. Wagonlander  
Mrs. Suzanne G. Walters  
Dr. & Mrs. Jay A. Werschky  
Mr. & Mrs. Clair Ward

**Special Gifts**

To support General Operating

Mr. & Mrs. John Lindholm  
Ms. Shirley Reeve

Purchased a Gift of an FIA Membership

Mr. George Ensinger for Ron & Mary Meeker  
Ms. Pam Folts & Ms. Sherry Johnston for Lisa Land  
Mr. & Mrs. Gary J. Hurand for Arthur & Trudy Weiss  
Mr. & Mrs. Clifford Lutz for Rachel Nagy  
Mrs. Glenda Naffziger-Kniss for Mackenzie Naffziger  
Ms. Sally Ross for Susan Ross  
Ms. Lauren Watkins for Asa Ascenscio-Zuccaro & Mildred Ascenscio-Zuccaro

Grant to support Glass Program Development

Arthur G. Bishop Charitable Trust

Grant to support the exhibition & programs for Sons: Seeing the Modern African American Male

McCombs Family Flint  
Non-Endowed Fund of the Community Foundation of Greater Flint

Support of Hot Shop Demonstration Days  
McLaren Health Care

Support of Huntington Free Saturdays 21/22  
Huntington Bank

Support of FIA Magazine 2021/22

Ms. Lynne Hurand

Donation to purchase Indian jewelry for the Permanent Collection

Dr. & Mrs. Prasad Kommareddi

To support Founders Society  
Mr. & Mrs. Victor Rabinkov

To support the Art School  
Mr. & Mrs. Carey Scheberle  
Dr. Gerald Schneberger

To support General Operating  
Ms. Janet A. Schultz

To purchase Recording and Live Streaming equipment

Mr. & Mrs. Howard S. Shand

Film Society Legacy Fund  
Chuck & Kathryn Sharbaugh

**In Honor**

In honor of Tracee Glab for giving a tour  
Anonymous

In honor of Myron & Barbara Levine (Mike & Bobbie) to support Conservation of the Print Collection

Mr. Peter Levine & Ms. Marion Day

**In Memory**

In memory of Susan Steiner Bolhouse

Ms. Betsy Boyd, to support Art School Endowment Fund  
Mr. & Mrs. Christopher J. Dundas, to support Founders Society  
Ms. Lynne Hurand, to support the Hurand/Bryer Education Endowment Fund  
Mr. & Mrs. Raymond J. Kelly III, to support Art School Endowment Fund

In memory of Joshua Hurand to support Art School Endowment Fund

Mr. & Mrs. Mark L. Lippincott

In memory of Mary Kachman to support the Art School Student Gallery

The staff of the 53rd District Court, Livingston County  
Judge Daniel Bain  
Ms. Cynthia Bell  
Mr. Robert D. Clements  
The Healthcare Fraud Division  
Mr. & Mrs. Markham Heid  
Ms. Susan Hellerman  
Mr. & Mrs. Nicholas Katcherian  
Mr. & Mrs. Daniel Kosikowski  
The MacGregor Family  
Mr. & Mrs. John McInnes  
Mr. & Mrs. Joe Murphy  
The Reilly Family  
The Napinsky Family  
The Tibbetts Family

In memory of Margaret Rabiah to support the Permanent Collection Fund

Mrs. Valarie Bailie  
Ms. Carol S. Derby  
Mr. Eduardo Elizondo  
Mrs. Susan Garnett & Ms. Beverly Morneault  
Glen Raven Custom Fabrics LLC  
Mr. & Mrs. John B. Henry  
Chuck & Kathryn Sharbaugh  
Ms. Judith Wood

In memory of Frederick Gerry Reitz to support Museum Programming & Outreach Programs for Pre-K students  
Ann & Khalil Saab

In memory of Jim & Marilyn Truesdell to support Collections  
Fund to purchase an Ernest Lawson painting  
Ms. Gwendolyn Truesdell

**Film Society Sponsors 2021/22**

Since 9.16.21 - 11.9.21

Supporting Player Level - \$500  
Mr. & Mrs. Chapin Cook  
Dr. & Mrs. Kienan F. Murphy

**Film Society Members 2021/22**

Since 9.16.21 - 11.9.21

Ms. Leslie Acevedo  
Mr. William S. Ballenger III  
Mr. & Mrs. Richard Beauchamp  
Mr. Albert Comins  
Vicki Coughlin  
Ms. Nora G. Fisher  
Mrs. Marabeth Foreman  
Ms. Kathleen George  
Ms. Lynne Hurand  
Mr. & Mrs. Kurt Neiswender  
Ms. Suzanne Owen  
Mr. John Peters  
Dr. & Mrs. Daniel J. Ryan  
Dr. & Mrs. Stuart B. Weiner

**Print Club Members 2020/21**

Since 9.16.21 - 11.9.21

Mr. Patrick Murray & Mr. James Edwards  
Mrs. Betty Salimi  
Mr. Mike D. Smith & Ms. Trish M. Zito-Smith

**The Contemporaries**

Since 9.16.21 - 11.9.21

Mr. Asa Ascenscio-Zuccaro & Ms. Mildred Ascenscio-Zuccaro  
Mr. & Mrs. David F. Barbour  
Mrs. Jill Carr  
Mrs. Billie Fisher  
Mr. Paul F. Hauth  
Mr. Patrick Hayes & Ms. Rhannon Ragland  
Purchased a Gift of The Contemporaries  
Ms. Lauren Watkins for Asa Ascenscio-Zuccaro & Mildred Ascenscio-Zuccaro

**Event Sponsors**

Since 9.16.21 - 11.9.21

Community Gala 2022  
Ms. Maria Gonzalez & Mr. Glen Adams

Janice B. Adams, in honor of Alvern Lock  
Alpha Phi Alpha Fraternity-Epsilon Upsilon Lambda Chapter  
Communities First, Inc.  
Delta Sigma Theta Sorority Inc  
Flint Alumnae Chapter  
ELGA Credit Union  
Flint Public Library  
Friends of Berston  
Gospel Temple Missionary Baptist Church, in honor of Alvern Lock  
Health Alliance Plan  
Gary & Carol Hurand  
Ms. Lynne Hurand  
Hurley Medical Center  
Mrs. Nina M. Jones-Lewis  
Kettering University  
Lawrence E. Moon Funeral Home  
Tom & Kay Lillie  
Macedonia Missionary Baptist Church, In Honor of Raymond Clemons  
Sean & Eureka McCormick  
Mott Community College  
Drs. Bobby & Nita Mukkamala  
Dr. & Mrs. Kienan F. Murphy  
Northgate  
Jim & Jane Richardson  
The Serra Foundation

Chuck & Kathryn Sharbaugh  
Mr. Omar & Mrs. Donyale Sims  
Ms. Ernelle Taylor  
Unique Impression Salon - Gloria A. Tyus, in honor of Alvern Lock  
Dr. & Mrs. Jay A. Werschky  
Todd & Lisa Wiseley

**Fore the Arts 2021**

Community Foundation of Greater Flint  
Flint Downtown Development Authority

Fore the Arts 2021 - Lunch Sponsor

Huntington National Bank

**The PARTY 2022**

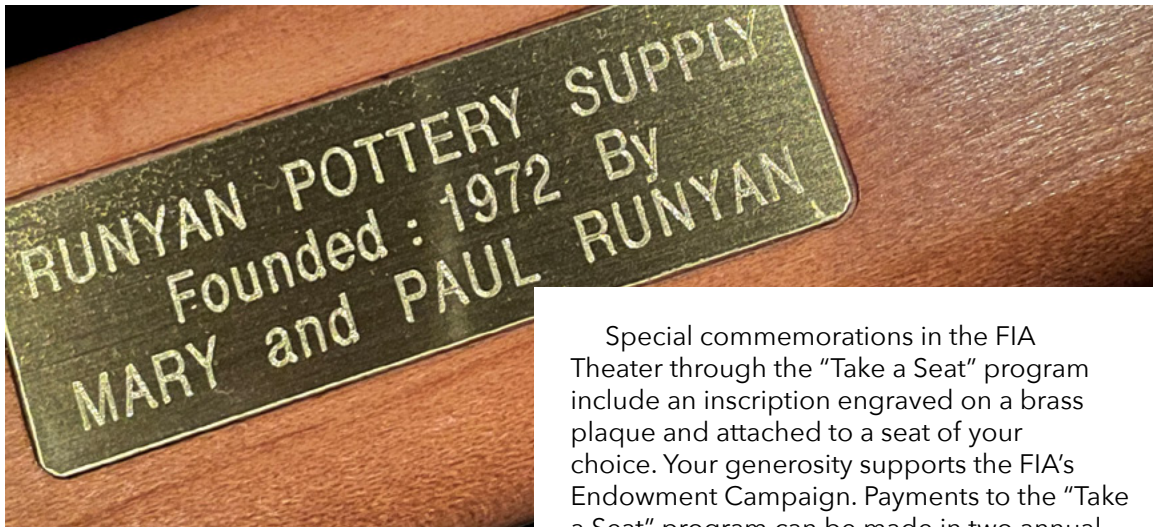
Dr. & Mrs. Kienan F. Murphy

**Wine Tasting 2022**

Dr. & Mrs. Kienan F. Murphy







# Paul and Mary Runyan

The 50-year anniversary of a business is a milestone that calls for an epic and unique commemoration—and Paul and Mary Runyan found a perfect way to do exactly that through the Flint Institute of Arts.

The FIA's "Take a Seat" program allows supporters to sponsor seats in the FIA Theater as a way to celebrate great people and achievements while also supporting the FIA. The Runyans founded Runyan Pottery Supply—or "Runyans" as it is known simply and affectionately by many loyal customers—in 1974. Since then, the business has been the FIA's major supplier and ceramic trouble-shooter. That partnership and support over the years has been foundational to the success of the FIA's ceramics program. Runyans' quality of clay formulas, materials, and equipment combined with the technical expertise of their team have provided immense support for the FIA, artists, faculty, and students over the years.

Runyan Pottery Supply also donates clay each year for the creation of hundreds of bowls that are donated to the Food Bank of Eastern Michigan for their annual "Empty Bowls" event, which raises funds for people in need in the community. The Runyans have also contributed to the FIA's capital projects, including expansion of the kiln room and major repairs to the large downdraft kiln.

Special commemorations in the FIA Theater through the "Take a Seat" program include an inscription engraved on a brass plaque and attached to a seat of your choice. Your generosity supports the FIA's Endowment Campaign. Payments to the "Take a Seat" program can be made in two annual installments, which are 100% tax deductible.

## Take-A-Seat Form

## Payment Options

**Seat - \$1,000**

- ☐ A one-time payment
- ☐ A pledge of \$500 per year for two years
- ☐ Instead of sponsoring a seat, I would like to make a gift to the Endowment Fund of \$ \_\_\_\_\_

### Brass Plaque Inscription

Please clearly print the text as you would like it to appear on your brass plaque. It can be your name, a family name, a business name or a tribute to another person (three lines maximum, one character per box, blank spaces count as one character).

[illegible]

## Method of Payment

Name\_\_\_\_\_

Address \_\_\_\_\_

City \_\_\_\_\_ State \_\_\_\_\_ Zip \_\_\_\_\_

- ☐ Check payable to "FIA Endowment Fund"

-  VISA  MasterCard  Discover  AMEX

Acct. # \_\_\_\_\_ CVV # \_\_\_\_\_

Exp. Date \_\_\_\_\_ Signature \_\_\_\_\_

## Return form to:

Take-A-Seat  
Flint Institute of Arts  
1120 E. Kearsley St.  
Flint, MI 48503

**For more information:**

contact Kathryn Sharbaugh  
at 810.234.1695 or  
ksharbaugh@flintarts.org.

feeling blue

These gorgeous, ocean-inspired vases are just the thing to get you thinking about warmer days during these cold winter months. Too chilly to leave the house? Visit [flintarts.org/shop](http://flintarts.org/shop) to view these and many other handcrafted items that can be delivered straight to your home.



MUSEUM SHOP

Members always receive a 10% discount on Museum Shop purchases.

**FOLLOW US @**  
**FIAMuseumShop**



Museum Shop Hours  
Mon-Sat, 10a-5p\*;  
Sun, 1p-5p

*\*The Museum Shop is open extended hours for select special events.*





1120 E. Kearsley St. Flint, MI 48503

# FIA



The Flint Institute of Arts and  
Communities First, Inc. present the

## 15th Annual **community gala**

**January 22, 2022**

Artist Q&A: 6:00p

Reception: 7:00p–9:00p

### **In Advance**

**\$40 Members**

**\$60 Non-Members**

### **At the Door**

**\$55 Members**

**\$75 Non-Members**



*Please see page 3  
for more details.*

community gala

